



# SEDAR 94: Florida Hogfish

## Data Workshop Intro

FWC-FWRI Stock Assessment Group

St. Petersburg, FL

7/28/2025 – 8/01/2025



# Life History Overview

- Tropical reef species associated with coral reef areas in the western north Atlantic Ocean, Gulf of Mexico, and Caribbean Sea
  - From the Carolinas south to northern coast of Brazil. In U.S. continental waters, most abundant in the eastern Gulf of Mexico and FL Keys
  - Populations from U.S. waters are currently believed to belong to three stocks
- Juveniles settle nearshore in seagrass beds and shallow reefs with ontogenetic migration to nearshore/offshore hard-bottom habitats and reef habitats
- Protogynous hermaphrodites that form harems. Protracted spawning with peaks from December through April
- Feeds during day for benthic invertebrates, such as crabs and mollusks



# Brief Fishery Characteristics

- Recreationally and commercially sought species with commercial harvest records back as early as 1927 (Bradshaw 2025, DW-06)
  - Primarily spearfishing and hook & line gears
  - Developing Recreational HL fishery on the WFS since ~2010
- Neutral or curious nature make it more susceptible to capture by spearfishing.
  - Selection/preference of larger males results in top-down size-selective fishing mortality with truncated size and age structure in more heavily fished areas (McBride and Richardson 2007).





# Guinness World Record

- The first color photograph ever taken underwater was of a hogfish in the Florida Keys, during 1926
  - *National Geographic* photographer Charles Martin and Dr. William Longley.
- Charles Martin used a specially designed waterproof camera housing, the scene was around 15 m deep (49 ft), and was illuminated with highly explosive magnesium flash powder ignited on a raft on the surface of the water.

<https://www.guinnessworldrecords.com/world-records/446487-first-underwater-colour-photo>



Stock	Region	FL Counties	MRIP	NMFS Stat	SRHS
-	West of FL	-	-	11 – 21	24 – 29
WFS	NW FL	Escambia to Dixie	1	7 – 10	23
WFS	SW FL	Levy to Collier	2	3 – 6	21, 22
Keys/EFL	FL Keys	Monroe	3	1, 2, 2479 - 2482	12, 17, 18*
Keys/EFL	SE FL	Indian River to Miami-Dade	4	2580, 2680, 2780, 2579, 2679, 2779	11
Keys/EFL	NE FL	Nassau to Brevard	5	2880, 2980, 3080, 2879, 2979, 3079	7, 8
-	North of FL	-	-	North of 31°	1 – 6, 9, 10



**SEDAR 94: Florida Hogfish**

# Assessment History

## SEDAR 37 and Update

Stock Synthesis v3.24

**1986 – 2012 (16)**, Three Stocks, Ages 0 – 18+

WFS (Update)	KEYS/EFL	GA/NC
5 fleets <ul style="list-style-type: none"><li>Dome shaped: commercial trap, recreational spear, recreational hook and line</li><li>Asymptotic: commercial hook and line</li><li>Freely estimated (domed): commercial spear</li></ul>	5 fleets <ul style="list-style-type: none"><li>Dome shaped: recreational hook and line, recreational spear</li><li>Asymptotic: commercial hook and line, commercial trap,</li><li>Freely estimated (domed): commercial spear</li></ul>	4 fleets <ul style="list-style-type: none"><li>Asymptotic: Commercial hook and line, commercial spear, combined gear index, recreational</li></ul>
8 IOAs <ul style="list-style-type: none"><li>4 FD – Selectivity linked to fleets</li><li>4 FI – Dome shaped selectivity</li></ul>	6 IOAs <ul style="list-style-type: none"><li>4 FD – Selectivity linked to fleets</li><li>2 FI – RVC- Tortugas asymptotic, RVC-Keys dome shaped</li></ul>	1 IOA <ul style="list-style-type: none"><li>1 FD – Selectivity linked to fleets</li></ul>







# S37 Stock Status

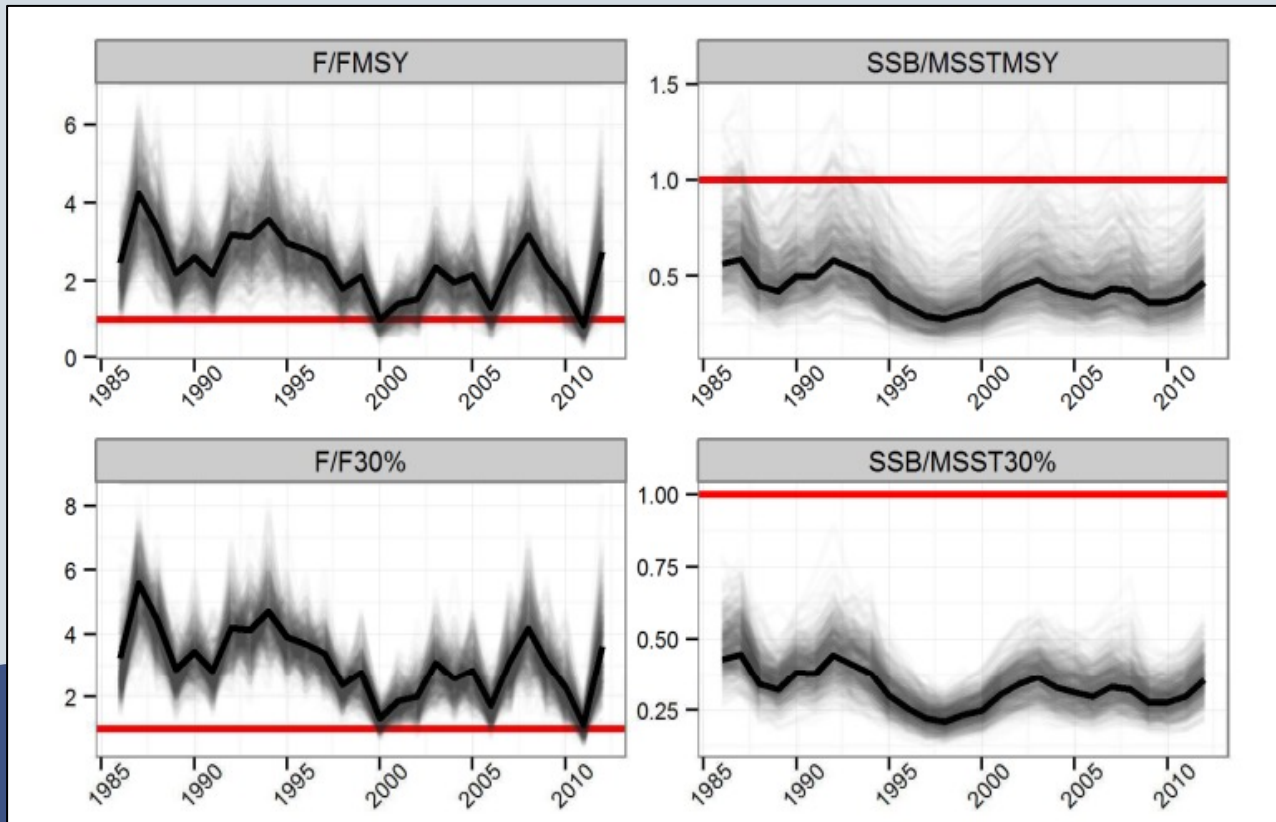


SEDAR 37 (2013)

*Florida Keys/East FL*

Overfished

Undergoing overfishing

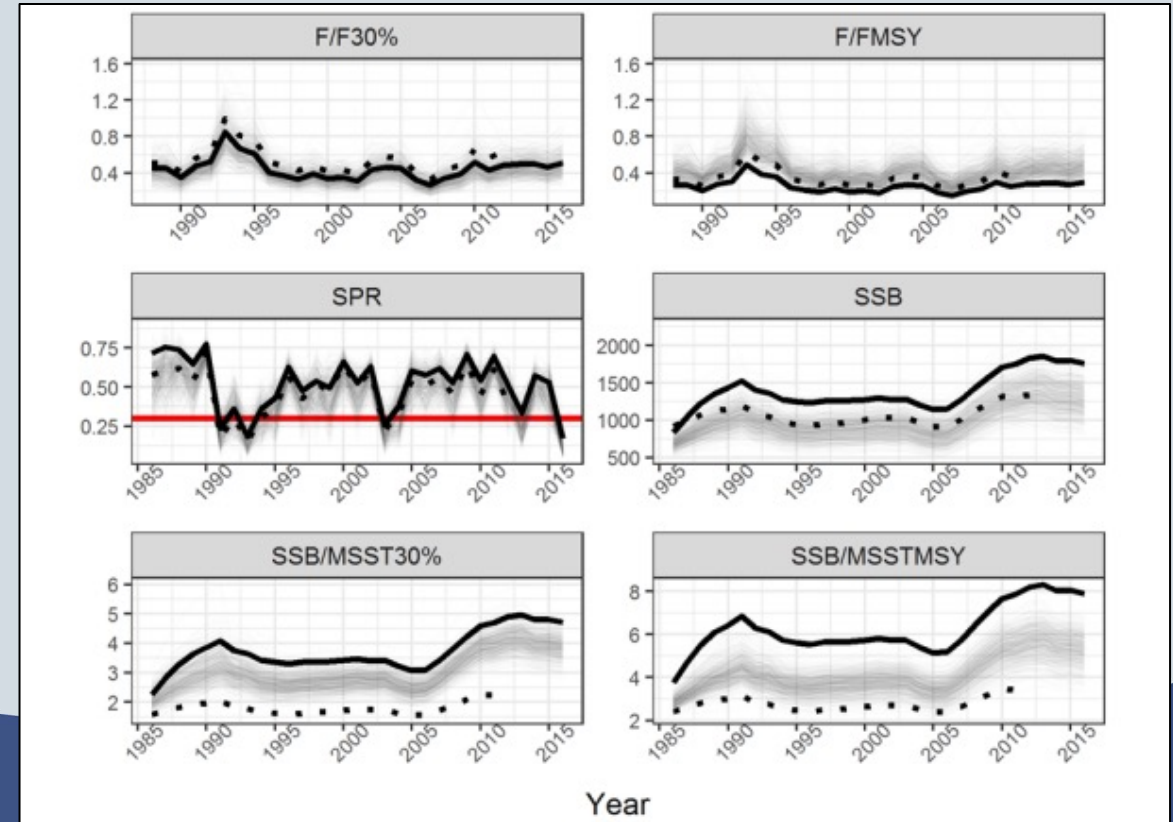


SEDAR 37U (2017)

*West Florida Shelf*

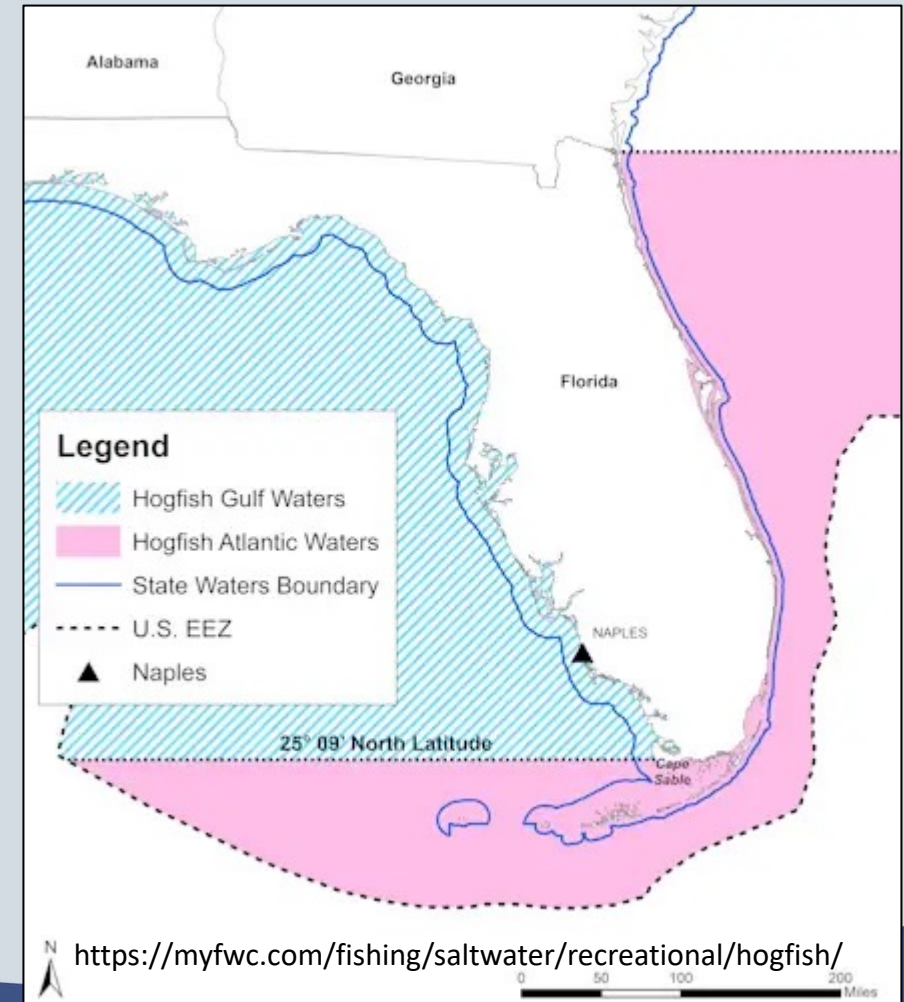
Not overfished

Not undergoing overfishing



# SAFMC Snapper Grouper Amendment 37

- Implemented Aug 14, 2017
- **Stock boundary for Gulf/Atl** (Fishery Mgmt. Unit)
  - 25 degrees 9 min N Lat (Cape Sable).
- Set  $MSY = F_{30\%SPR}$  and  $MSST = 75\%$  of  $SSB_{MSY}$
- Increased the min. size from 12" FL to 16" FL
  - 14" FL in Gulf (RF Amend. 43; 8/24/17)
- Established OY, ACL, and **10yr rebuild plan**
- Modified Rec bag limit: 1/p/d.
- Established a Rec season: May-Oct.





# Size Limit History

## **South Atlantic Federal (3 - 200 Miles)**

- 12" (305 mm) FL (01/1995 – 08/2017)
- 16" (406 mm) FL (08/2017 – present)

## **Gulf Federal (10 -200 Miles)**

- 12" (305 mm) FL (11/1999 – 08/2017)
- 14" (356 mm) FL (08/2017 – present)

## **FL State Waters South Atlantic (0 - 3 Miles) & Gulf (0 -10 Miles)**

- 12" (305mm) FL (07/1994-08/2017)
- 16" FL in Atlantic, 14" FL in Gulf (08/2017-present)



# Trip Limit History – Federal and FL State Waters

## **South Atlantic**

### Commercial

- 25 lbs. ww per boat per day (08/2017 – present)

### Recreational

- 5 fish per person per day (07/1994 – 08/2017 [FL], 05/1995 – 08/2017 [SA])
- Open May 1- Oct. 31. 1 fish per person per day (08/2017 – present)

## **Gulf**

### Commercial

- None

### Recreational

- 5 fish per person per day (11/1999 – present)



# Fishery/Spatial Closures

- Madison-Swanson (6/2004 – present)
    - Fishing prohibited
  - Steamboat Lumps (6/2004 – present)
    - Fishing prohibited
  - The Edges (7/2009 – present)
    - Fishing prohibited Jan 1 – Apr 30
  - Flower Garden (01/1992- present)
    - Bottom gears prohibited
  - Riley's Hump (2/1994 - 8/2002)
    - Fishing prohibited May 1 – Jun 30
  - Tortugas Reserves (8/2002 – present)
    - Fishing prohibited
  - Pulley Ridge (1/2006 – present)
    - Bottom gears prohibited
- FL State Waters – Western Dry Rocks**
- April 1 – July 31 (4/2021 – present)





# Musings

- Life History
  - Most LH information (e.g., growth, max age, natural mortality, age-at-maturity, age-at-transition) was generated primarily from the WFS data and assumed for all stocks.
    - Do we have any new data or a renewed understanding of older data to suggest more stock-specific characterizations in Florida?
- Indices
  - Do the fishery-dependent indices reflect trends in abundance or changes in the fishery (e.g., regulations, fisherman behavior, economics)?
  - Is there sufficient fishery-independent indices in each stock to capture prominent stages of life history (e.g., recruitment, subadult/adult)
    - If so, does this preclude the need for the fishery-dependent indices?



# Musings

- Commercial

- Should the commercial landings still be parsed by SP, HL, and TR or be aggregated more?
  - What do the length comps and assumptions on selectivity show?
- Commercial discards are unable to be estimated – any alternative recommendations?

- Recreational

- Can the MRIP landings/discards be parsed by SP and HL gear or is the uncertainty too high?
  - What do the length comps and assumptions on selectivity show?
- Explore the SRFS data and determine its viability for use
  - Can the calibrated data be parsed by gear or is the uncertainty too high?
- Explore the SEFHIER data and determine its viability for use



Thank You!

