

CPUE Expansion Estimation for Commercial Discards of South Atlantic Red Snapper

Sarina Atkinson^{1*}, Gary Decossas¹, Kevin Thompson¹

SEDAR90-DW-07

April 2025

Updated 3 June 2025 and 10 March 2026



This information is distributed solely for the purpose of pre-dissemination peer review. It does not represent and should not be construed to represent any agency determination or policy.

Please cite this document as:

Atkinson, Sarina, Gary Decossas and Kevin Thompson. 2025. CPUE Expansion Estimation for Commercial Discards of South Atlantic Red Snapper. SEDAR90-DW-07. SEDAR, North Charleston, SC. 39 pp.

SEDAR 90 Working Paper

CPUE Expansion Estimation for Commercial Discards of South Atlantic Red Snapper

Sarina Atkinson^{1*}, Gary Decossas¹, Kevin Thompson¹

Original Submission: April 2025

Updated Submissions: 23 May 2025

10 March 2026

¹National Marine Fisheries Service, Southeast Fisheries Science Center, Miami Laboratory, 75 Virginia Beach Drive, Miami, FL 33149

*Corresponding author: sarina.atkinson@noaa.gov

†Updated submission from May 2025 includes an Appendix which contains results for both the discards and discard length compositions to include 2024 data. Submission from March 2026 updates Figures 5 & 6 of the Appendix due to an error when calculating the nominal discard length composition for 2010-2017.

Introduction

The general approach for estimating discards for the commercial reef fish fleet utilizes catch-per-unit-effort (CPUE) from the coastal reef fish observer program and total fishing effort from the commercial reef logbook program to estimate total catch,

$$totalCatch = CPUE * totalEffort.$$

For discard estimation, CPUE is computed for total discards, including fish released alive, released dead, released in unknown condition, and used for bait. The primary metric for the coastal observer program is CPUE by species and gear. The principal focus of this analysis was to apply the discard estimation methods developed for Gulf of America Red Grouper in SEDAR 61 (Smith et al. 2018), Gulf of America Gray Triggerfish in SEDAR 62 (Smith et al. 2019), and Gulf of America Vermilion Snapper in SEDAR 67 (Smith et al. 2019) to South Atlantic Red Snapper. Overall, the discard estimation methods developed using Gulf of America data suited South Atlantic Red Snapper with the exception of the closed season. Therefore, different approaches were explored specifically for estimating closed season discards.

Methods

Data Sources

Vertical line observer data were collected by the Gulf and South Atlantic Fisheries Foundation (GSAFF) from 2007-2016 and the Southeast Fisheries Science Center (SEFSC) from 2014-2021. Data collected by GSAFF target vessels with valid Snapper-Grouper permits exclusively fishing bandit reels. Fishers voluntarily participated in the project and were compensated for each day an observer was aboard a vessel. Additionally, one crew member may have been displaced to allow space for the observer during the fishing trip (GSAFF, 2008). Mandatory observer coverage began in 2014 under a Marine Fisheries Initiative (MARFIN) grant which funded 62 sea days from February 2014 through January 2015 (Enzenauer et al. 2015). Beginning in 2018, the SEFSC South Atlantic Reef Fish Observer Program has continuous mandatory coverage for the vertical line portion of the South Atlantic reef fish fishery. Decossas & Mathers (2023) documents in more detail vessel selection for this program with the main difference being a crew member is not displaced. All observer data from 2007-2023 were considered for estimating discards of South Atlantic Red Snapper.

For both observer programs, scientific observers on commercial fishing vessels record detailed information on catch and effort for a subset of trips. Catch by species was recorded according to the disposition category: kept (landed), released alive, released dead, released undetermined, and used for bait. Length and weight were recorded for a subsample of individual fish. Time periods for the methodology can be defined in terms of the observer program, with the pre-observer time period representing years prior to 2007, and the observer time period representing years 2007 and beyond.

Total effort was determined from the commercial Coastal Fisheries Logbook Program (CFLP) in which fishers reported basic information on effort and catch by species for every trip (Atkinson et al. 2021). The coastal logbook program began in 1990 for a subset of vessels in Florida and

expanded to all vessels in 1993. For South Atlantic Red Snapper discard estimation, complete calendar years 1993-2023 were considered.

Relevant Management History of South Atlantic Red Snapper

There were several key management changes relevant to discard estimation:

- (1) A 20-inch total length minimum size limit established in 1992 until the end of 2009. Starting in 2010, there is no Red Snapper minimum size limit.
- (2) A series of closures first established in 2010 that would close the South Atlantic Red Snapper fishery for the majority of the year. Table 1 highlights the number of days the fishery was open and closed in a given year from 2010-2023.
- (3) A 50-pound gutted weight trip limit implemented in 2012 which was increased to 75 pounds in 2013.

Given these regulations, two management regimes were defined for the observer time period, the pre-closure period (2007-2009) and the closure period (2010-2023).

Gear

For the South Atlantic region, observer data only sampled vertical line (handline and electric reel) trips. Therefore, discard estimation for Red Snapper was conducted for only this gear.

Spatial Domain

Per recommendation of the stock assessment analysts, discard estimates were conducted for the South Atlantic, defined in Figure 1. The South Atlantic stock boundary is based on fishing area from the Florida Keys (South of US 1) to the North Carolina and Virginia border. Fishing areas that span the NC/VA border are included.

Trip-Level Catch for Observer Data

Observers collected catch data at a sub-trip level (e.g., a specific set and line for vertical line gear), but it was not feasible to sample every set, line, etc., for every trip. Gear-specific procedures were applied to estimate the trip-level landed catch from the observer data (Smith et al. 2018). Morphometric equations (length-length, length-weight, and weight-weight equations) used to convert all observer data to maximum total length and whole weight came from the SEDAR 41.

Trip-Level Effort for Observer and Logbook Data

For observer data, trip-level effort for vertical lines was computed as the cumulative daily fishing time (hours) from first hook in to last hook out; this time metric included the active fishing time

as well as transit time between fishing locations during a given trip day. This effort variable generally matched trip fishing time reported in the logbook data (Smith et al. 2018).

Catch Expansion Procedures and Verification

Observer CPUE was calculated using trip-level nominal effort and catch of kept Red Snapper for a given time period. Statistical estimation of total catch \hat{C} and associated variance followed procedures for a (Horvitz-Thompson) survey design ratio estimator (Jones et al. 1995; Lohr 2010):

$$\hat{C} = CP\bar{U}E * \hat{X},$$

where $CP\bar{U}E$ is observer mean CPUE and \hat{X} is total logbook nominal effort. Species-specific logbook total effort \hat{X} for vertical lines was calculated in two steps. First, logbook trip effort for vertical lines was summed over trips reporting landings of Red Snapper. Second, to obtain \hat{X} , logbook trip effort was adjusted by the proportion of observer trip effort that reported only discards of the target species. Logbook total trips N were calculated in a similar manner.

Mean CPUE was estimated by

$$CP\bar{U}E = \frac{\bar{y}}{\bar{x}},$$

where \bar{y} is average catch and y_i is observed catch per trip i ,

$$\bar{y} = \frac{1}{n} \sum_i y_i,$$

\bar{x} is average effort and x_i is observer effort per trip i ,

$$\bar{x} = \frac{1}{n} \sum_i x_i,$$

and n is the number of observer trips. Variance of total catch was estimated using

$$var[\hat{C}] = var[CP\bar{U}E] * \hat{X}^2$$

where the variance of mean CPUE is

$$var[CP\bar{U}E] = \left(1 - \frac{n}{N}\right) \frac{s^2(y|x)}{n\bar{x}^2},$$

N is the total number of logbook trips, and sample variance is

$$s^2(y|x) = \frac{\sum_i (y_i - CP\bar{U}E x_i)^2}{n - 1}.$$

Standard error of total catch was calculated as

$$SE[\hat{C}] = \sqrt{\text{var}[\hat{C}]}.$$

The CV of total catch \hat{C} was estimated by

$$CV[\hat{C}] = \frac{SE[\hat{C}]}{\hat{C}}.$$

Using the kept observer CPUE, a verification step compared annual total landed catch from logbook data with the estimated observer annual total catch \hat{C} . Once verified, the catch expansion procedure was used to estimate annual total discards in weight and number. Since total logbook nominal effort, \hat{X} , starts with trips reporting landings of Red Snapper, this catch expansion procedure was only applicable when estimating Red Snapper discards for the open season.

Stratification by Trip Catch or Effort Level

Computations of mean CPUE, total catch, and associated standard errors were generalized to include strata for trip catch and/or effort levels of Red Snapper. This enabled accurate estimation of total catch (and discards) in cases where observer sampling was not proportional to the fleet with respect to trip catch or effort (Smith et al. 2019a), e.g., observers sampled fewer or more low-catch trips with respect to logbook low-catch trips, etc. Comparisons of observer vs. logbook frequency distributions for trip-level catch, effort, and CPUE were used to delineate strata for trip catch and/or effort levels (e.g., low, moderate, high, etc.).

Hindcast Procedures

For years prior to 2007, before observer data were collected, the hindcast discard estimation procedures described in Smith et al. (2019a) were applied to Red Snapper. For this method, the ratio of observer CPUE in weight to logbook CPUE was computed for the observer time period, and then multiplied by the annual logbook CPUE for the hindcast time period to produce an estimated annual observer CPUE. Then, the annual observer CPUE was multiplied by annual logbook effort for the pre-observer time period to estimate total catch \hat{C} in weight. An additional step computed the ratio of the observer CPUE in number to observer CPUE in weight. This ratio was then used to compute the observer estimated discards in number from the discards in weight for the hindcast period. Standard errors for the hindcast period were estimated using the respective CVs of total estimated catch \hat{C} kept and discarded as described in Smith et al. (2019a). The pre-closure management regime (2007-2009) was used in the hindcast procedure to estimate discards from 1993-2006 because these data were collected when the same 20-inch minimum total length size limit was in effect. Verification compared total landed catch from logbook data with the estimated total catch \hat{C} and standard error from observer data for the hindcast time period.

Discard Estimation for the Red Snapper Closed Season

The standard catch expansion procedures described above were unsuitable when applied to the closed season because logbook effort \hat{X} is underestimated, given the fishery is closed the majority of the year starting in 2010. As a result, different approaches were explored to capture logbook effort during the closed season when Red Snapper are not targeted. Species assemblages have been analyzed in the South Atlantic reef fish fishery to inform possible species likely caught in the same habitat that Red Snapper exist (Shertzer & Williams 2008). Utilizing a similar analysis to Shertzer and Williams (2008), two analyses were performed:

- 1) Non-multidimensional scaling (ordination; NMDS)
- 2) Non-hierarchical, agglomerative clustering

Landings data (whole pounds of fish caught) used in the analysis were collected from the commercial sector via the CFP from 2010-2023. Analyses of commercial data were restricted to trips that occurred in the South Atlantic with handline and electric-line gear, and also included single-day and multi-day trips. This is in contrast to Shertzer and Williams (2008), which used only handline, single day trips from 1992-2006 (where 2006 was a partial year). That paper used those data filters because, at the time, handline gear accounted for 87% of the records, while single-day trips accounted for 50% of the records. However, for the 2010-2023 time period, this pattern does not hold as handline gear only accounts for 67% of records and single-day trips account for more than half the trips in the South Atlantic.

For the NMDS and cluster analysis, the Bray-Curtis measure of dissimilarity (i.e. distance) between species was used as it was also used by Shertzer and Williams (2008). The format of the matrix used to compute dissimilarities is the same as well with rows representing species and columns representing vessel-months (i.e. the sum of landings for a vessel in a month). Species were removed if they appeared in fewer than 1% of all trips because rare and incidental species may distort ordination patterns (McCune & Grace 2004). In addition, data were transformed with the root-root (fourth root) transformation to moderate the influence of abundant species.

The NMDS analysis was performed in RStudio using the *ecodist* (v2.1.3; Goslee & Urban 2007) and *vegan* (v2.6.10; Oksanen et al. 2025) libraries, while the k-medoid method of non-hierarchical cluster analysis was performed using the *pam* function found in the *cluster* (v2.1.8.1; Maechler et al. 2025) library. The optimal number of clusters were determined by looking at the average silhouette width for a range of chosen k clusters.

Discard Length Composition

The length frequency distributions for discards were estimated using 30 millimeter (mm) maximum total length bins, labelled at the midpoint. Nominal relative proportion of length bin (L) was computed as

$$L_i = \frac{n_i}{\sum n_i}$$

Where n_i is the number of discarded fish in a given year i .

Results and Discussion

There is a total of 265 Red Snapper trips observed from 2007-2023. These trips are summarized in Table 2 by observer program where the sampling design differs. Inspection of the annual nominal CPUE (catch in whole pounds per hour) from logbook trips reporting Red Snapper showed a fairly stable trend from 1993-2007, followed by an increasing average CPUE from 2008-2023 (Fig. 2). Considering management history, observer sampling program methodologies across time, and observer sample sizes, initial management regimes are pre-closure (2007-2009) and closure time periods (2010-2023).

Discards were mostly fish near or below the minimum size limit during the pre-closure period 2007-2009, and kept fish were mostly above the minimum size limit. Discard estimation was conducted separately within the pre-closure 2007-2009, closure period 2010-2023 open season and closure period 2010-2023 closed season management regimes to account for potential changes in the discard CPUE indicated by differences in the discard length frequencies and discard behavior. Observer data from the pre-closure period (2007-2009) were used for hindcasting discards for the pre-observer years 1993-2006, which had the same minimum size limit (20" TL). Catch-effort data for observer trips catching Red Snapper were pooled across years for the respective management regimes. Logbook catch-effort data for Red Snapper trips were pooled in the same manner. These observer and logbook datasets were the basis for subsequent analysis and estimation of catch and discards for the pre-closure and closure management regimes.

Observer and logbook frequency distributions of trip-level catch, effort, and CPUE were similar for closure period (2010-2023), suggesting that observer sampling of Red Snapper trips in the open season was representative of the commercial fleet. This was not the case for years 2007-2009 (pre-closure management regime). Further analysis showed that observers sampled a higher proportion of high effort (> 75 hours) Red Snapper trips relative to the commercial fleet (Table 3). To account for this discrepancy, observer and logbook trips were grouped into strata according to low (L) and high (H) effort for subsequent analysis and estimation.

CPUE expansion estimates of annual total landed catch of South Atlantic Red Snapper compared favorably with reported logbook landings for 1993-2023 (Fig. 3). However, due a sharp decline in Red Snapper landings in 2010 caused by near year-round closures, two alternative methods or calculating logbook total effort to estimate discards were explored. For the open season, the proportions of observer trips and effort encountering Red Snapper that had kept fish are given in Table 4 by management regime and effort level strata. These proportions were used to adjust annual logbook total Red Snapper trips and effort (Table 5) to account for logbook trips that only had discarded fish.

For the closed season, discards appear to be from non-Red Snapper targeted trips. This is evident spatially in the observer data where a majority of the landed catch and discards during the open season are off the coast of Florida. However, during the closed season, discarded effort of Red Snapper shifts to North Carolina, South Carolina, and Georgia waters. Therefore, logbook effort used in the expansion needed to account for trips targeting other species within Red Snapper habitat.

Our analysis adopted from Shertzer & Williams (2008) and described in the methods section, indicated that the patterns in species assemblages are still roughly the same as the 1992-2006 time period, with there being three main assemblages: Northern Assemblage, Southern Assemblage, and Deepwater Assemblage (Fig. 4). The Northern Assemblage is associated with Red Snapper and includes 18 other species. Table 6 lists the species part of the North Assemblage from our analysis and the 10 of which also appear on the list generated by Shertzer and Williams (2008). The annual logbook trips and effort for the closed season (Table 7) is derived from sub-setting the logbook data to trips that caught at least one of the species listed in Table 6.

Estimates of observer mean CPUE by management regime and effort level strata for the open season are given in Table 8. These CPUEs were the basis for expansion estimates of Red Snapper catch and discards during the open season. Observer discard CPUEs for the pre-closure management regime (2007-2009) were the basis for hindcasting discards during 1993-2006. Observer discard CPUEs for the closed season was further divided into two time periods given high sample sizes during the closed season. These time periods were guided by observer sampling program changes with 2010-2017 indicating a time when there was GSAFF sampling and the start of SEFSC collecting observer data in the South Atlantic. The second time period (2018-2023) indicates the well-established SEFSC South Atlantic Reef Fish Observer Program. Observer discard CPUEs in number and weight for the closed season are given in Table 9.

CPUE expansion estimates for annual discards in numbers and whole weight of South Atlantic Red Snapper for 1993-2023 are provided in Table 10. Total estimated discards in number ranged from 8,000 to 19,000 fish during the pre-closure management regime 1993-2009, and averaged about 23,000 fish during the closure management regime 2010-2023 (Fig. 5A). When the season is open, discards in weight accounted for about 30% of the total catch (kept + discards). Open season discards are largely a result of the 50-pound gutted weight trip limit. Combined open and closed season discards account for over 50% of the total catch in years when the fishery is open for a few months (Fig. 5B). Annual nominal discard length frequencies in 30 mm maximum total length bins are provided in Figure 6. Years with less than 3 trips observed are excluded for confidentiality.

The previous South Atlantic Red Snapper assessment (SEDAR 73) utilized discard logbook data and method adopted from SEDAR 41 for estimating discards (McCarthy 2015). For SEDAR 73, an annual nominal discard rate by open and closed season was calculated using discard logbook data from 2002-2019. A weighted mean discard rate using 2002-2009 (open season) data was used for hindcasting 1992-2001. The discard rate was weighted by the number of discard logbook trips reporting either Red Snapper or no discards for that year. These discard rates were applied to a filtered logbook dataset that represented an estimate of total effort. Estimates from each assessment cannot be directly compared because the methodology for estimating total effort and the source of the discard rates differ. However, SEDAR 90 and SEDAR 73 annual estimated commercial discards are shown in Figure 7 with overall similar magnitude.

An Appendix was added May 2025 to update all results to include 2024 data since this is the terminal year of the SEDAR 90 assessment. Additionally, decisions made during the Data Workshop regarding discard length compositions are added in the Appendix.

Literature Cited

- Atkinson, S. M. Judge, and R. Orhun. 2021. Coastal Fisheries Logbook Program Metadata. SEDAR74-DW-3. SEDAR, North Charleston, SC. 17 pp.
- Cochran, W.G. 1997. Sampling Techniques. 3rd Edition, John Wiley and Sons, NY.
- Decossas, G. & A. Mathers. 2023. South Atlantic Reef Fish Observer Program Metadata. SEDAR86-WP08. SEDAR, North Charleston, SC. 11 pp.
- Enzenauer, M. P., S. J. B. Gulak, B. M. Deacy, and J. K. Carlson. 2015. Characterization of the southeastern U.S. Atlantic mid-shelf and deepwater reef fish fisheries. NOAA Technical Memorandum NMFS-SEFSC-679, 18 p.
- Goslee, S.C. and Urban, D.L. 2007. The ecodist package for dissimilarity-based analysis of ecological data. *Journal of Statistical Software* 22(7):1-19. DOI:10.18637/jss.v022.i07.
- Gulf and South Atlantic Fisheries Foundation (GSAFF). 2008. Catch Characterization and Discards with the Snapper-Grouper Vertical Hook-and-Line Fishery of the South Atlantic United States. SEDAR41-RD27. SEDAR, North Charleston, SC. 33 pp.
- Jones, C.M., D.S. Robson, H.D. Lakkis, H.D., and J. Kressel. 1995. Properties of catch rates used in analysis of angler surveys. *Transactions of the American Fisheries Society* 124:911-928.
- Lohr, S.L. 2010. Sampling: design and analysis, 2nd ed. Boston: Brooks/Cole.
- Maechler, M., Rousseeuw, P., Struyf, A., Hubert, M., Hornik, K. (2025). cluster: Cluster Analysis Basics and Extensions. R package version 2.1.8.1.
- McCarthy, K. 2015. Discards of Red Snapper Calculated for Commercial Vessels with Federal Fishing Permits in the US South Atlantic. SEDAR41-DW36. SEDAR, North Charleston, SC. 16 pp.
- McCune, B., and J. Grace. 2004. Analysis of Ecological Communities. MJM Software Design, Glenden Beach, Oregon.
- Oksanen J, Simpson G, Blanchet F, Kindt R, Legendre P, Minchin P, O'Hara R, Solymos P, Stevens M, Szoecs E, Wagner H, Barbour M, Bedward M, Bolker B, Borcard D, Carvalho G, Chirico M, De Caceres M, Durand S, Evangelista H, FitzJohn R, Friendly M, Furneaux B, Hannigan G, Hill M, Lahti L, McGlinn D, Ouellette M, Ribeiro Cunha E, Smith T, Stier A, Ter Braak C, Weedon J, Borman T (2025). *_vegan: Community Ecology Package_*. R package version 2.6-10, <<https://CRAN.R-project.org/package=vegan>>.
- Shertzer, K.W. and E.H. Williams. 2008. Fish assemblages and indicator species: reef fishes off the southeastern United States. *Fish Bull.* 106:257-269.

Smith, S.G., A.C. Shideler, K.J. McCarthy. 2018. Proposed CPUE Expansion Estimation for Total Discards of Gulf of Mexico Red Grouper. SEDAR61-WP-15. SEDAR, North Charleston, SC. 11 pp.

Smith, S.G., A.C. Shideler, K.J. McCarthy. 2019a. Proposed CPUE Expansion Estimation for Total Discards of Gulf of Mexico Gray Triggerfish. SEDAR62-WP-07. SEDAR, North Charleston, SC. 21 pp.

Smith, S.G., A.C. Shideler, K.J. McCarthy. 2019b. CPUE Expansion Estimation for Total Discards of Gulf of Mexico Vermilion Snapper. SEDAR67-WP-12. SEDAR, North Charleston, SC. 21 pp.

Table 1. Number of days the South Atlantic Red Snapper fishery was open and closed each year from 2010-2023.

| Year | Days Open | Days Closed |
|------|-----------|-------------|
| 2010 | 3 | 362 |
| 2011 | 0 | 365 |
| 2012 | 25 | 341 |
| 2013 | 44 | 321 |
| 2014 | 58 | 307 |
| 2015 | 0 | 365 |
| 2016 | 0 | 365 |
| 2017 | 60 | 305 |
| 2018 | 116 | 249 |
| 2019 | 53 | 312 |
| 2020 | 53 | 312 |
| 2021 | 69 | 296 |
| 2022 | 51 | 314 |
| 2023 | 43 | 322 |

Table 2. Number of total and Red Snapper South Atlantic observer vertical line trips by year and data collection time period.

| Observer Program & Data Collection Entity | Year | Total Trips | Red Snapper Trips |
|--|------|-------------|-------------------|
| Gulf and South Atlantic Fisheries Foundation (GSAFF) voluntary participation | 2007 | 28 | 15 |
| | 2008 | 5 | 4 |
| | 2009 | 7 | 6 |
| | 2010 | 6 | 3 |
| | 2011 | 13 | 10 |
| | 2014 | 5 | 3 |
| | 2015 | 24 | 20 |
| | 2016 | 16 | 13 |
| Southeast Fisheries Science Center MARFIN grant | 2014 | 26 | 9 |
| | 2015 | 1 | 1 |
| Southeast Fisheries Science Center South Atlantic Reef Fish Observer Program | 2018 | 18 | 3 |
| | 2019 | 12 | 7 |
| | 2020 | 16 | 5 |
| | 2021 | 55 | 19 |
| | 2022 | 282 | 106 |
| | 2023 | 208 | 56 |

Table 3. Definition of trip catch level strata for South Atlantic Red Snapper, and corresponding percentages of logbook and observer vertical line trips for each zone and management regime.

| Management Regime | Season | Strata Level | Stratum Code | % Trips | |
|-----------------------|--------|-----------------------------|--------------|---------|----------|
| | | | | Logbook | Observer |
| Pre-closure 2007-2009 | Open | Low, Effort \leq 75 hours | L | 84 | 54.5 |
| Pre-closure 2007-2009 | Open | High, Effort $>$ 75 hours | H | 16 | 45.5 |

Table 4. South Atlantic Red Snapper vertical line trip and effort adjustment factors by management regime and catch level strata. Catch level strata are defined in Table 3; catch level stratum ‘All’ is all levels (i.e., no stratification) for the management regime. The proportions of Red Snapper observer trips and effort with kept Red Snapper were used to respectively adjust annual logbook total trips and effort (Table 5) to account for logbook trips that only had discarded fish.

| Management Regime | Season | Strata Type | Strata Level | Number of Observer Trips (n) | Proportion of Observer Data with Kept Red Snapper | |
|-----------------------|--------|-------------|--------------|------------------------------|---|--------|
| | | | | | Trips | Effort |
| Pre-closure 2007-2009 | Open | Effort | L | 12 | 0.75 | 0.743 |
| Pre-closure 2007-2009 | Open | Effort | H | 10 | 1 | 1 |
| Closures 2010-2023 | Open | All | A | 123 | 0.984 | 0.924 |

Table 5. Annual time-series of vertical line logbook trips (number) and effort (hours) by effort level strata for South Atlantic Red Snapper during the open season only.

| Year | Season | Strata Type | Strata Level | Logbook Trips | | Logbook Effort | |
|------|--------|-------------|--------------|---------------|--------------|----------------|------------------------|
| | | | | Reported | Adjusted (N) | Reported | Adjusted (\hat{X}) |
| 1993 | Open | Effort | L | 2,031 | 2,708 | 57,999 | 78,026 |
| 1993 | Open | Effort | H | 280 | 280 | 27,491 | 27,491 |
| 1994 | Open | Effort | L | 2,196 | 2,928 | 62,376 | 83,914 |
| 1994 | Open | Effort | H | 299 | 299 | 29,774 | 29,774 |
| 1995 | Open | Effort | L | 2,015 | 2,687 | 61,042 | 82,120 |
| 1995 | Open | Effort | H | 223 | 223 | 21,081 | 21,081 |
| 1996 | Open | Effort | L | 1,742 | 2,323 | 51,800 | 69,687 |
| 1996 | Open | Effort | H | 254 | 254 | 24,436 | 24,436 |
| 1997 | Open | Effort | L | 1,463 | 1,951 | 39,717 | 53,431 |
| 1997 | Open | Effort | H | 224 | 224 | 21,806 | 21,806 |
| 1998 | Open | Effort | L | 1,393 | 1,857 | 34,809 | 46,828 |
| 1998 | Open | Effort | H | 192 | 192 | 18,809 | 18,809 |
| 1999 | Open | Effort | L | 1,363 | 1,817 | 34,391 | 46,266 |
| 1999 | Open | Effort | H | 171 | 171 | 16,364 | 16,364 |
| 2000 | Open | Effort | L | 1,261 | 1,681 | 33,089 | 44,515 |
| 2000 | Open | Effort | H | 165 | 165 | 15,478 | 15,478 |
| 2001 | Open | Effort | L | 1,734 | 2,312 | 45,560 | 61,291 |
| 2001 | Open | Effort | H | 274 | 274 | 27,895 | 27,895 |
| 2002 | Open | Effort | L | 1,801 | 2,401 | 46,937 | 63,144 |
| 2002 | Open | Effort | H | 307 | 307 | 31,796 | 31,796 |
| 2003 | Open | Effort | L | 1,108 | 1,477 | 32,190 | 43,305 |
| 2003 | Open | Effort | H | 291 | 291 | 29,131 | 29,131 |
| 2004 | Open | Effort | L | 1,079 | 1,439 | 33,442 | 44,989 |
| 2004 | Open | Effort | H | 199 | 199 | 19,299 | 19,299 |
| 2005 | Open | Effort | L | 1,013 | 1,351 | 32,013 | 43,067 |
| 2005 | Open | Effort | H | 171 | 171 | 16,533 | 16,533 |
| 2006 | Open | Effort | L | 763 | 1,017 | 21,838 | 29,378 |
| 2006 | Open | Effort | H | 215 | 215 | 21,904 | 21,904 |
| 2007 | Open | Effort | L | 865 | 1,153 | 24,077 | 32,391 |
| 2007 | Open | Effort | H | 243 | 243 | 23,846 | 23,846 |
| 2008 | Open | Effort | L | 1,183 | 1,577 | 32,122 | 43,213 |
| 2008 | Open | Effort | H | 210 | 210 | 20,484 | 20,484 |
| 2009 | Open | Effort | L | 1,380 | 1,840 | 32,736 | 44,040 |

| Year | Season | Strata Type | Strata Level | Logbook Trips | | Logbook Effort | |
|------|--------|-------------|--------------|---------------|--------------|----------------|------------------------|
| | | | | Reported | Adjusted (N) | Reported | Adjusted (\hat{X}) |
| 2009 | Open | Effort | H | 202 | 202 | 19,975 | 19,975 |
| 2010 | Open | All | A | 10 | 10 | 301 | 326 |
| 2012 | Open | All | A | 82 | 83 | 1,610 | 1,742 |
| 2013 | Open | All | A | 350 | 356 | 6,731 | 7,282 |
| 2014 | Open | All | A | 824 | 838 | 13,299 | 14,389 |
| 2017 | Open | All | A | 961 | 977 | 7,759 | 8,395 |
| 2018 | Open | All | A | 1,551 | 1,577 | 19,436 | 21,028 |
| 2019 | Open | All | A | 1,415 | 1,438 | 13,480 | 14,585 |
| 2020 | Open | All | A | 1,387 | 1,410 | 14,790 | 16,001 |
| 2021 | Open | All | A | 1,374 | 1,397 | 13,803 | 14,934 |
| 2022 | Open | All | A | 1,218 | 1,238 | 12,024 | 13,010 |
| 2023 | Open | All | A | 1,154 | 1,173 | 10,371 | 11,221 |

Table 6. South Atlantic species assemblage containing Red Snapper using 2010-2023 coastal logbook data for the updated analysis compared to the Shertzer & Williams (2008) analysis.

| Common Name | | Species ITIS Code |
|-------------------|----------------------------|----------------------|
| Updated Analysis | Shertzer & Williams (2008) | |
| Greater Amberjack | | 168689 |
| Black Sea Bass | Black Sea Bass | 167687 |
| Gag Grouper | Gag Grouper | 167759 |
| Red Grouper | Red Grouper | 167702 |
| White Grunt | White Grunt | 613026 |
| Red Hind | | 167700 |
| Rock Hind | | 167696 |
| Hogfish | | 170566 |
| Almaco Jack | | 168691 |
| Margate | Margate | 169060 |
| Jolthead Porgy | | 169197 |
| Knobbed Porgy | | 169201 |
| Red Porgy | Red Porgy | 169207 |
| Banded Rudderfish | | 168693 |
| Scamp | Scamp | 167763 |
| Red Snapper | Red Snapper | 168853 |
| Silk Snapper | | 168861 |
| Vermilion Snapper | Vermilion Snapper | 168909 |
| Gray Triggerfish | Gray Triggerfish | 173138 |

Table 7. Annual time-series of vertical line logbook trips (number) and effort (hours) for the South Atlantic Red Snapper closed season using the species list defined in Table 6.

| Year | Season | Logbook Trips | Logbook Effort |
|------|--------|---------------|----------------|
| 2010 | Closed | 4,668 | 104,818 |
| 2011 | Closed | 4,708 | 101,886 |
| 2012 | Closed | 4,173 | 85,600 |
| 2013 | Closed | 3,728 | 80,021 |
| 2014 | Closed | 4,128 | 78,862 |
| 2015 | Closed | 4,616 | 91,908 |
| 2016 | Closed | 4,690 | 86,664 |
| 2017 | Closed | 4,133 | 75,322 |
| 2018 | Closed | 2,688 | 49,464 |
| 2019 | Closed | 3,302 | 62,556 |
| 2020 | Closed | 2,823 | 59,466 |
| 2021 | Closed | 2,394 | 50,645 |
| 2022 | Closed | 2,441 | 52,688 |
| 2023 | Closed | 2,486 | 49,888 |

Table 8. Estimated observer mean CPUE in weight and number by management regime and catch level strata for expansion estimates of vertical line South Atlantic Red Snapper catch and discards for the open season.

| Management Regime | Season | Strata Type | Strata Level | Logbook CPUE | Observer CPUE | | |
|-----------------------|--------|-------------|--------------|--------------|---------------|------------------|------------------|
| | | | | | Kept | Discard (Weight) | Discard (Number) |
| Pre-closure 2007-2009 | Open | Effort | L | 2.744 | 3.102 | 1.216 | 0.314 |
| Pre-closure 2007-2009 | Open | Effort | H | 1.176 | 0.729 | 0.586 | 0.200 |
| Closure 2010-2023 | Open | All | A | 5.838 | 6.310 | 0.690 | 0.141 |

Table 9. Estimated observer mean CPUE in weight and number by management regime of vertical line South Atlantic Red Snapper discards for the closed season.

| Management Regime | Season | Number of Observer Trips (n) | Observer Discard CPUE (Weight) | Observer Discard CPUE (Number) |
|-------------------|--------|------------------------------|--------------------------------|--------------------------------|
| Closure 2010-2017 | Closed | 58 | 1.742 | 0.268 |
| Closure 2018-2023 | Closed | 97 | 2.244 | 0.352 |

Table 10. Time-series of CPUE expansion estimates for South Atlantic Red Snapper vertical line discards in weight (lbs.) and number (with associated standard errors).

| Year | Season | Estimated Discards in Weight | SE of Estimated Discards in Weight | Estimated Discards in Number | SE of Estimated Discards in Number |
|------|--------|------------------------------|------------------------------------|------------------------------|------------------------------------|
| 1993 | Open | 62,528 | 21,893 | 17,252 | 5,204 |
| 1994 | Open | 67,202 | 23,391 | 18,580 | 5,571 |
| 1995 | Open | 65,648 | 23,454 | 17,988 | 5,543 |
| 1996 | Open | 50,717 | 18,114 | 13,898 | 4,281 |
| 1997 | Open | 41,864 | 14,397 | 11,625 | 3,443 |
| 1998 | Open | 34,194 | 12,182 | 9,378 | 2,881 |
| 1999 | Open | 35,555 | 12,869 | 9,700 | 3,032 |
| 2000 | Open | 37,992 | 13,845 | 10,341 | 3,257 |
| 2001 | Open | 63,468 | 21,517 | 17,717 | 5,175 |
| 2002 | Open | 69,714 | 23,515 | 19,498 | 5,668 |
| 2003 | Open | 50,178 | 16,399 | 14,213 | 4,018 |
| 2004 | Open | 54,764 | 18,803 | 15,216 | 4,500 |
| 2005 | Open | 46,427 | 16,559 | 12,728 | 3,915 |
| 2006 | Open | 28,840 | 9,730 | 8,065 | 2,345 |
| 2007 | Open | 53,386 | 22,918 | 14,950 | 5,763 |
| 2008 | Open | 64,579 | 27,723 | 17,676 | 6,814 |
| 2009 | Open | 65,287 | 28,027 | 17,833 | 6,875 |
| 2010 | Open | 225 | 61 | 46 | 10 |
| 2010 | Closed | 182,631 | 26,165 | 28,105 | 4,611 |
| 2011 | Closed | 177,523 | 25,433 | 27,319 | 4,482 |
| 2012 | Open | 1,202 | 325 | 245 | 56 |
| 2012 | Closed | 149,146 | 21,368 | 22,952 | 3,765 |
| 2013 | Open | 5,027 | 1,358 | 1,024 | 234 |
| 2013 | Closed | 139,426 | 19,975 | 21,456 | 3,520 |
| 2014 | Open | 9,933 | 2,682 | 2,023 | 462 |
| 2014 | Closed | 137,406 | 19,686 | 21,145 | 3,469 |
| 2015 | Closed | 160,137 | 22,943 | 24,643 | 4,043 |
| 2016 | Closed | 151,001 | 21,634 | 23,237 | 3,812 |
| 2017 | Open | 5,795 | 1,565 | 1,180 | 269 |
| 2017 | Closed | 131,238 | 18,802 | 20,196 | 3,313 |
| 2018 | Open | 14,516 | 3,920 | 2,956 | 675 |
| 2018 | Closed | 111,000 | 14,199 | 17,420 | 2,261 |
| 2019 | Open | 10,068 | 2,719 | 2,050 | 468 |
| 2019 | Closed | 140,380 | 17,957 | 22,031 | 2,860 |

| Year | Season | Estimated Discards in Weight | SE of Estimated Discards in Weight | Estimated Discards in Number | SE of Estimated Discards in Number |
|------|--------|------------------------------|------------------------------------|------------------------------|------------------------------------|
| 2020 | Open | 11,046 | 2,983 | 2,249 | 513 |
| 2020 | Closed | 133,446 | 17,070 | 20,943 | 2,719 |
| 2021 | Open | 10,309 | 2,784 | 2,099 | 479 |
| 2021 | Closed | 113,652 | 14,538 | 17,836 | 2,315 |
| 2022 | Open | 8,981 | 2,425 | 1,829 | 417 |
| 2022 | Closed | 118,237 | 15,124 | 18,556 | 2,409 |
| 2023 | Open | 7,746 | 2,092 | 1,577 | 360 |
| 2023 | Closed | 111,952 | 14,320 | 17,570 | 2,281 |

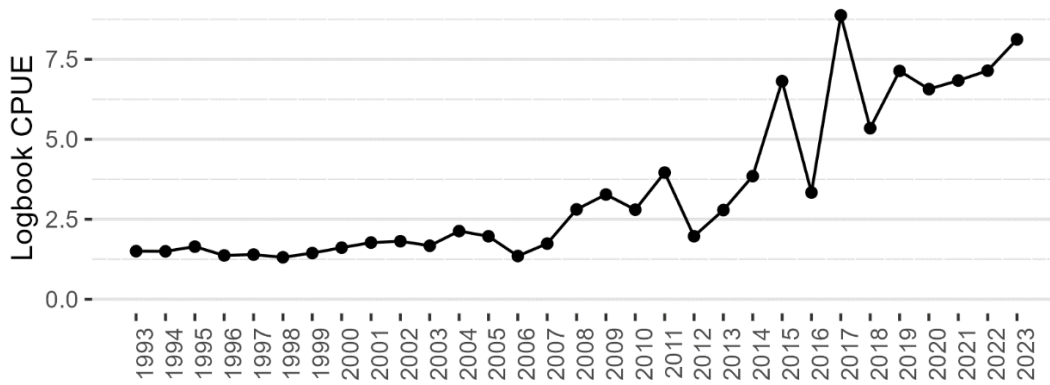


Figure 2. CPUE (catch in whole pounds per hour) time-series for logbook data from 1993-2023 for vertical line trips landing South Atlantic Red Snapper. The observer time period is from 2007-2023.

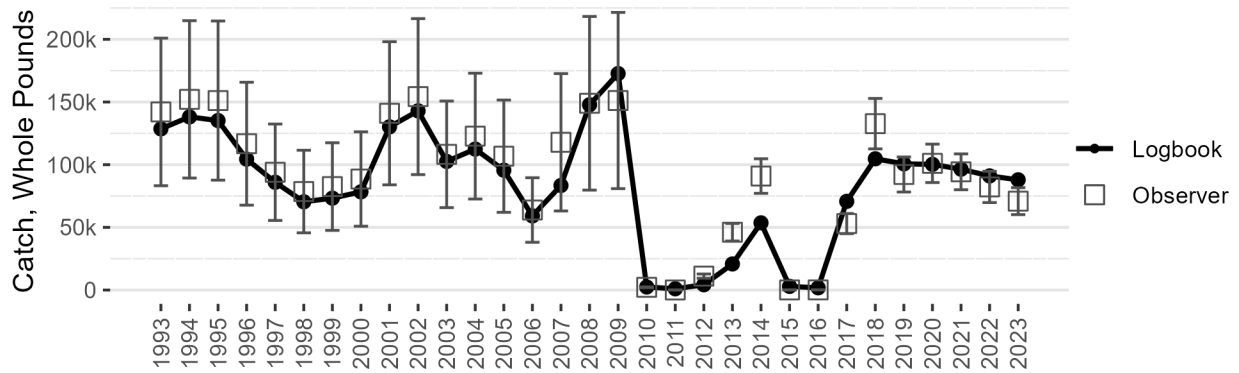


Figure 3. Comparison of vertical line reported annual logbook landings of South Atlantic Red Snapper (solid black line) with CPUE expansion estimates from observer data (open squares). Error bars (SE) are shown for observer estimates.

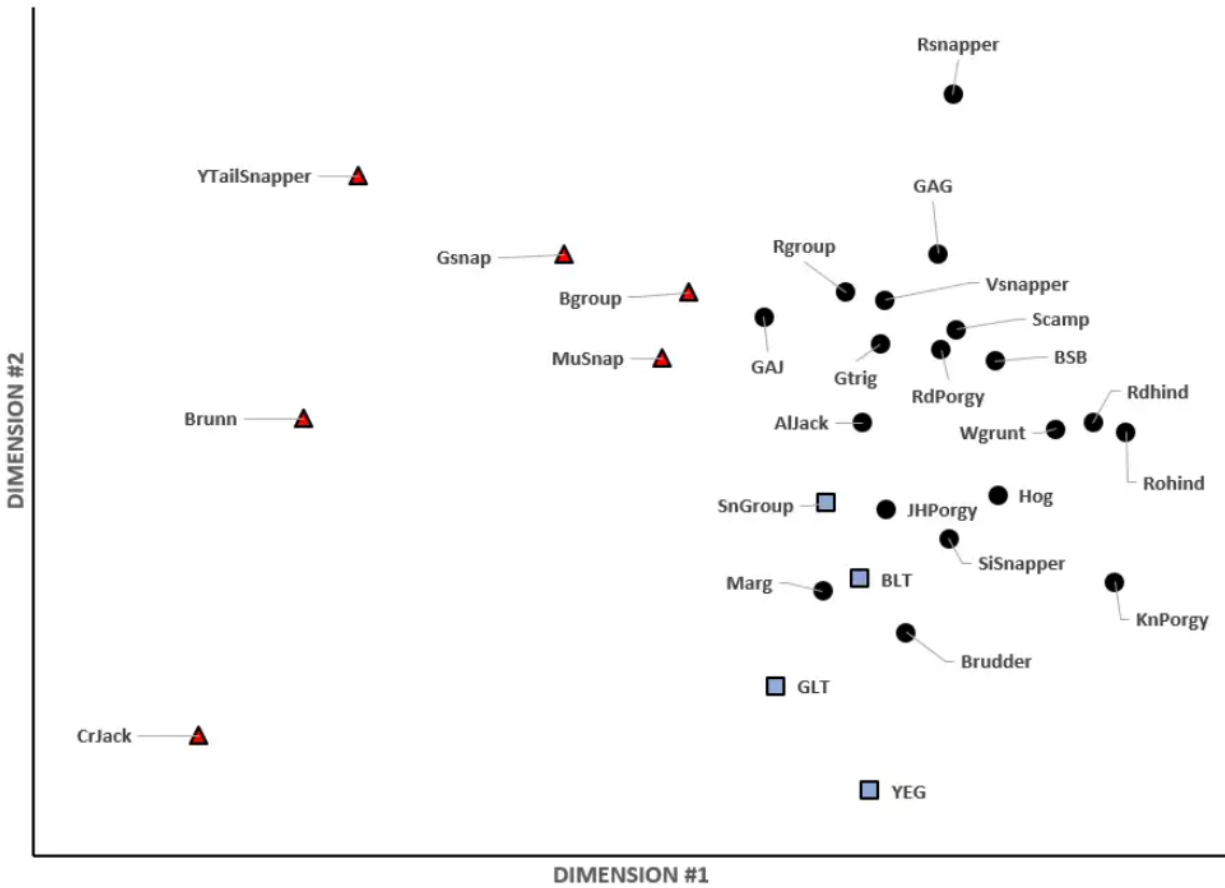
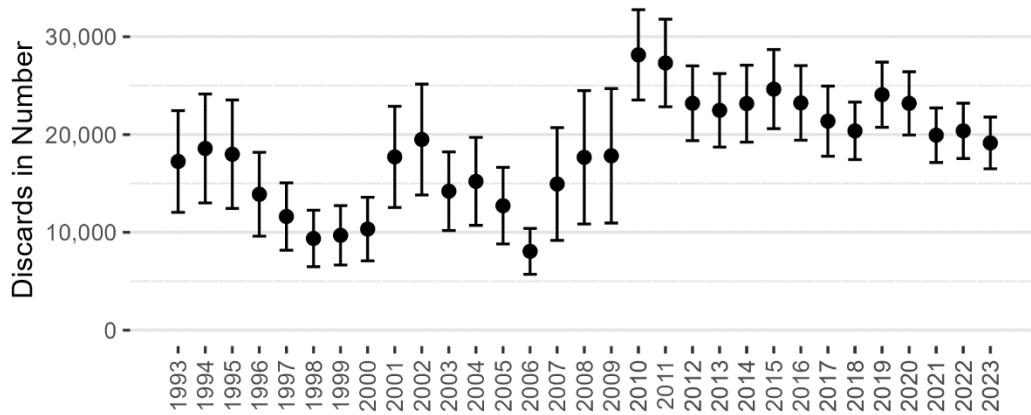


Figure 4. Ordination plot from NMDS analysis on commercial coastal logbook dataset (2010-2023) for the first two dimensions with three groups identified from the cluster analysis. Black circles represent the Northern Assemblage, red triangles represent the Southern Assemblage, and blue squares represent the Deepwater Assemblage.

(A) Discards in Number



(B) Discards in Weight, Percentage of Total Catch

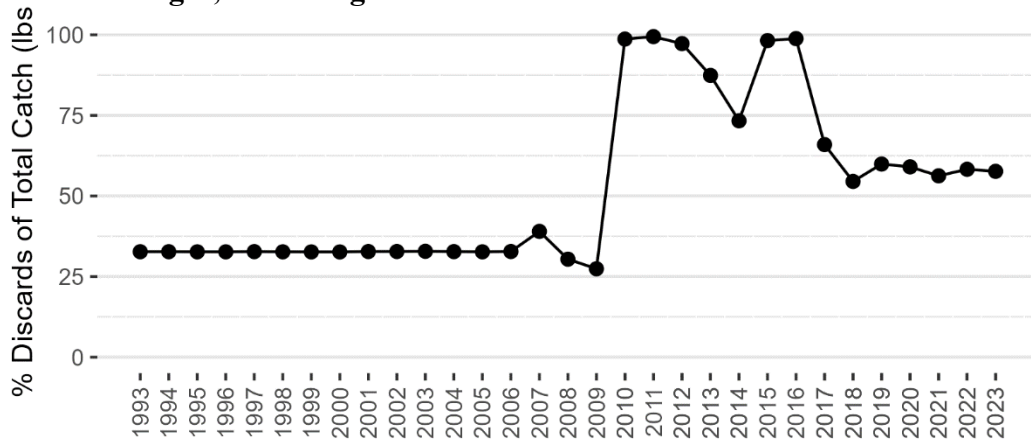


Figure 5. Observer CPUE expansion estimates of South Atlantic Red Snapper commercial vertical line annual discards (\pm SE) in (A) number and (B) weight expressed as percentage of total catch (kept + discards) for 1993-2023.

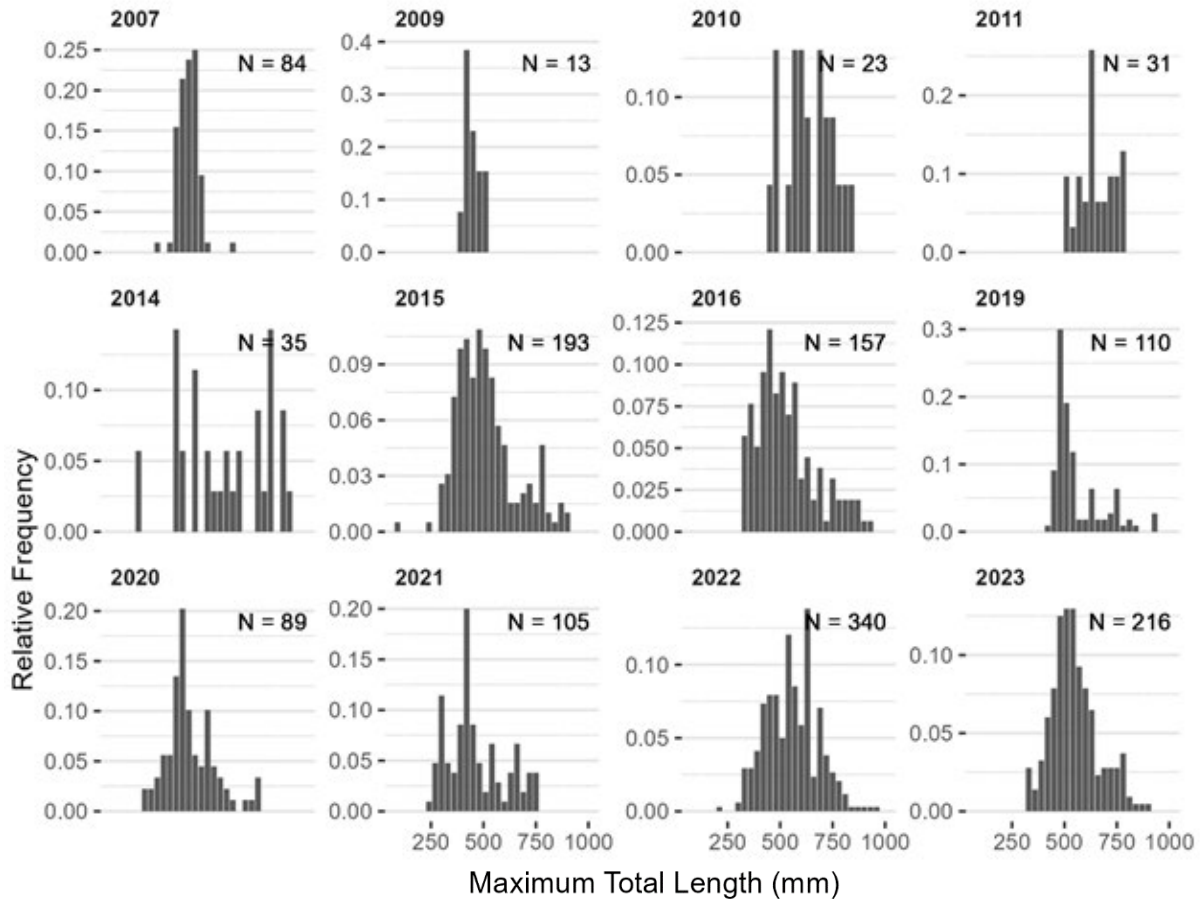


Figure 6. Commercial nominal discard length compositions for South Atlantic Red Snapper for years the contain at least three trips in a given year. N represents the number of discarded fish observed.



Figure 7. Commercial vertical line discard estimates of Red Snapper for SEDAR 90 compared to SEDAR 73.

Appendix

Discard Length Composition Methodology

Length composition of discarded fish were estimated in two ways depending on management regulations. The length frequency distribution for discards during the minimum size limit management regime from 2007-2009 were weighted by stratum discard estimates. Average discard CPUE in stratum h was scaled to stratum total effort \hat{Y}_h .

$$\hat{Y}_h = CPUE_h * \hat{X}_h$$

and multiplied by annual proportion of length L to obtain the annual total discards \hat{Y}_h at length L ,

$$\hat{Y}(L)_h = \hat{Y}_h * p(L)_h.$$

These were summed over all strata to obtain the survey frame total \hat{Y} at length L

$$\hat{Y}(L)_{st} = \sum_h \hat{Y}(L)_h,$$

and then converted to relative proportion of length L ,

$$p(L)_{st} = \frac{\hat{Y}(L)_{st}}{\sum_h \hat{Y}_h} (1)$$

Weighted discard length compositions differ from nominal discard length compositions when additional catch or effort stratification is used to subset the observer and logbook data. These stratifications account for cases where observer sampling was not proportional to the fleet.

During the 2010-2024 management regime, when the fishery had closures, a pooled nominal length composition of discards was calculated. This was a decision discussed at the Data Workshop where a pooled composition is preferred over an annual composition to generally inform selectivity during this time period.

Results and Discussion

The annual logbook CPUE of South Atlantic Red Snapper from 1993-2024 (Appendix Figure 1) shows an increasing CPUE in the more recent years. This could be a result of a steady decrease in the number of days the fishery is open each year (Appendix Table 1). An updated observer sample size table is provided in Appendix Table 2. Out of the 27 trips with observed Red Snapper in 2024, all of the observed discards of Red Snapper were reported during the closed season. Therefore, changes in discard estimates during the open season were solely based on updates to the logbook data with the addition of 2024 observer data. Slight changes were made across the entire time series with regards to the logbook outlier removal procedure which is calculated based on all available data. Logbook effort for the open season is shown in Appendix Table 3 and logbook effort for the closed season is in Appendix Table 4. Updated observer kept

and discard CPUEs for both the open and closed season are provided in Appendix Table 5 and 6, respectively. Only the discard CPUEs including 2024 data were slightly adjusted. The updated catch verification still compared favorably (Appendix Figure 2). Appendix Table 7 shows the final discard estimates in both weight and number for South Atlantic Red Snapper. Overall, the addition of 2024 did not make a significant change to the discard estimates. Total estimated discards (in number) still ranged from 8,000 to 19,000 fish during the pre-closure management regime (1993-2009), and averaged about 23,000 fish during the closure management regime (2010-2024) (Appendix Figure 3).

The methodology for providing discard length compositions were discussed during the Data Workshop. The nominal discard length frequencies were weighted by the effort stratified discard estimates from 2007-2009. This was to account for observers oversampling high effort (> 75 fishing hours) trips relative to the commercial fleet. The comparison between the nominal and weighted discard length frequencies for this time period are shown in Appendix Figure 4, where the weighted compositions are showing slightly larger fish. However, these fish are still at or below the minimum size limit of 20-inches total length (50.8 cm). During the closed time period from 2010-2024, a nominal composition was provided similar to SEDAR 41 & 73. Rather than pooling 14 years into a single length frequency, the data were separated into two time periods. While the distributions for each of these time periods are fairly similar (Appendix Figure 5), this decision was made to (1) account for changes in observer sampling protocols over time and (2) to better inform selectivity in future assessments if the distributions were to change with additional years of data. The 2010-2017 time period includes observer data collected by the GSAFF and SEFSC programs. Upon review, only one fish was reported by the SEFSC program with a discarded length. Therefore, the nominal composition for 2010-2017 only includes observer data from the voluntary GSAFF program. The final discard length compositions from 2007-2024 is shown in Appendix Figure 6.

Tables

Appendix Table 1. Number of days the South Atlantic Red Snapper fishery was open and closed each year from 2010-2024.

| Year | Days Open | Days Closed |
|------|-----------|-------------|
| 2010 | 3 | 362 |
| 2011 | 0 | 365 |
| 2012 | 25 | 341 |
| 2013 | 44 | 321 |
| 2014 | 58 | 307 |
| 2015 | 0 | 365 |
| 2016 | 0 | 365 |
| 2017 | 60 | 305 |
| 2018 | 116 | 249 |
| 2019 | 53 | 312 |
| 2020 | 53 | 312 |
| 2021 | 69 | 296 |
| 2022 | 51 | 314 |
| 2023 | 43 | 322 |
| 2024 | 29 | 337 |

Appendix Table 2. Number of total and Red Snapper South Atlantic observer vertical line trips by year and data collection time period.

| Observer Program & Data Collection Entity | Year | Total Trips | Red Snapper Trips |
|--|------|-------------|-------------------|
| Gulf and South Atlantic Fisheries Foundation (GSAFF) voluntary participation | 2007 | 28 | 15 |
| | 2008 | 5 | 4 |
| | 2009 | 7 | 6 |
| | 2010 | 6 | 3 |
| | 2011 | 13 | 10 |
| | 2014 | 5 | 3 |
| | 2015 | 24 | 20 |
| | 2016 | 16 | 13 |
| Southeast Fisheries Science Center MARFIN grant | 2014 | 26 | 9 |
| | 2015 | 1 | 1 |
| Southeast Fisheries Science Center South Atlantic Reef Fish Observer Program | 2018 | 18 | 3 |
| | 2019 | 12 | 7 |
| | 2020 | 16 | 5 |
| | 2021 | 55 | 19 |

| Observer Program & Data Collection Entity | Year | Total Trips | Red Snapper Trips |
|--|------|-------------|----------------------|
| | 2022 | 282 | 106 |
| | 2023 | 208 | 56 |
| | 2024 | 133 | 27 |

Appendix Table 3. Annual time-series of vertical line logbook trips (number) and effort (hours) by effort level strata for South Atlantic Red Snapper during the open season only.

| Year | Season | Strata Type | Strata Level | Logbook Trips | | Logbook Effort | |
|------|--------|----------------|-----------------|---------------|-----------------|----------------|---------------------------|
| | | | | Reported | Adjusted (N) | Reported | Adjusted (\bar{X}) |
| 1993 | Open | Effort | L | 2,030 | 2,707 | 57,929 | 77,932 |
| 1993 | Open | Effort | H | 280 | 280 | 27,491 | 27,491 |
| 1994 | Open | Effort | L | 2,196 | 2,928 | 62,376 | 83,914 |
| 1994 | Open | Effort | H | 299 | 299 | 29,774 | 29,774 |
| 1995 | Open | Effort | L | 2,015 | 2,687 | 61,042 | 82,120 |
| 1995 | Open | Effort | H | 223 | 223 | 21,081 | 21,081 |
| 1996 | Open | Effort | L | 1,742 | 2,323 | 51,800 | 69,687 |
| 1996 | Open | Effort | H | 254 | 254 | 24,436 | 24,436 |
| 1997 | Open | Effort | L | 1,462 | 1,949 | 39,657 | 53,350 |
| 1997 | Open | Effort | H | 224 | 224 | 21,806 | 21,806 |
| 1998 | Open | Effort | L | 1,393 | 1,857 | 34,809 | 46,828 |
| 1998 | Open | Effort | H | 192 | 192 | 18,809 | 18,809 |
| 1999 | Open | Effort | L | 1,363 | 1,817 | 34,391 | 46,266 |
| 1999 | Open | Effort | H | 171 | 171 | 16,364 | 16,364 |
| 2000 | Open | Effort | L | 1,261 | 1,681 | 33,089 | 44,515 |
| 2000 | Open | Effort | H | 165 | 165 | 15,478 | 15,478 |
| 2001 | Open | Effort | L | 1,734 | 2,312 | 45,560 | 61,291 |
| 2001 | Open | Effort | H | 273 | 273 | 27,815 | 27,815 |
| 2002 | Open | Effort | L | 1,801 | 2,401 | 46,937 | 63,144 |
| 2002 | Open | Effort | H | 307 | 307 | 31,796 | 31,796 |
| 2003 | Open | Effort | L | 1,108 | 1,477 | 32,190 | 43,305 |
| 2003 | Open | Effort | H | 291 | 291 | 29,131 | 29,131 |
| 2004 | Open | Effort | L | 1,079 | 1,439 | 33,442 | 44,989 |
| 2004 | Open | Effort | H | 199 | 199 | 19,299 | 19,299 |
| 2005 | Open | Effort | L | 1,013 | 1,351 | 32,013 | 43,067 |
| 2005 | Open | Effort | H | 171 | 171 | 16,533 | 16,533 |

| Year | Season | Strata Type | Strata Level | Logbook Trips | | Logbook Effort | |
|------|--------|-------------|--------------|---------------|--------------|----------------|------------------------|
| | | | | Reported | Adjusted (N) | Reported | Adjusted (\hat{X}) |
| 2006 | Open | Effort | L | 763 | 1,017 | 21,838 | 29,378 |
| 2006 | Open | Effort | H | 215 | 215 | 21,904 | 21,904 |
| 2007 | Open | Effort | L | 865 | 1,153 | 24,077 | 32,391 |
| 2007 | Open | Effort | H | 243 | 243 | 23,846 | 23,846 |
| 2008 | Open | Effort | L | 1,182 | 1,576 | 32,114 | 43,202 |
| 2008 | Open | Effort | H | 210 | 210 | 20,484 | 20,484 |
| 2009 | Open | Effort | L | 1,375 | 1,833 | 32,693 | 43,982 |
| 2009 | Open | Effort | H | 202 | 202 | 19,975 | 19,975 |
| 2010 | Open | All | A | 10 | 10 | 301 | 326 |
| 2012 | Open | All | A | 82 | 83 | 1,610 | 1,742 |
| 2013 | Open | All | A | 350 | 356 | 6,731 | 7,282 |
| 2014 | Open | All | A | 824 | 838 | 13,299 | 14,389 |
| 2017 | Open | All | A | 961 | 977 | 7,759 | 8,395 |
| 2018 | Open | All | A | 1,551 | 1,577 | 19,436 | 21,028 |
| 2019 | Open | All | A | 1,415 | 1,438 | 13,480 | 14,585 |
| 2020 | Open | All | A | 1,387 | 1,410 | 14,790 | 16,001 |
| 2021 | Open | All | A | 1,374 | 1,397 | 13,803 | 14,934 |
| 2022 | Open | All | A | 1,218 | 1,238 | 12,024 | 13,010 |
| 2023 | Open | All | A | 1,154 | 1,173 | 10,371 | 11,221 |
| 2024 | Open | All | A | 755 | 767 | 5,852 | 6,331 |

Appendix Table 4. Annual time-series of vertical line logbook trips (number) and effort (hours) for the South Atlantic Red Snapper closed season using the species list defined in Table 6.

| Year | Season | Logbook Trips | Logbook Effort |
|------|--------|---------------|----------------|
| 2010 | Closed | 4,667 | 104,807 |
| 2011 | Closed | 4,708 | 101,886 |
| 2012 | Closed | 4,186 | 85,754 |
| 2013 | Closed | 3,728 | 80,021 |
| 2014 | Closed | 4,128 | 78,862 |
| 2015 | Closed | 4,616 | 91,908 |
| 2016 | Closed | 4,690 | 86,664 |
| 2017 | Closed | 4,133 | 75,322 |
| 2018 | Closed | 2,680 | 49,348 |
| 2019 | Closed | 3,302 | 62,556 |
| 2020 | Closed | 2,823 | 59,466 |
| 2021 | Closed | 2,394 | 50,645 |
| 2022 | Closed | 2,441 | 52,688 |
| 2023 | Closed | 2,486 | 49,888 |
| 2024 | Closed | 2,359 | 45,099 |

Appendix Table 5. Estimated observer mean CPUE in weight and number by management regime and catch level strata for expansion estimates of vertical line South Atlantic Red Snapper catch and discards for the open season.

| Management Regime | Season | Strata Type | Strata Level | Logbook CPUE | Observer CPUE | | |
|-----------------------|--------|-------------|--------------|--------------|---------------|------------------|------------------|
| | | | | | Kept | Discard (Weight) | Discard (Number) |
| Pre-closure 2007-2009 | Open | Effort | L | 2.718 | 3.102 | 1.216 | 0.314 |
| Pre-closure 2007-2009 | Open | Effort | H | 1.176 | 0.729 | 0.586 | 0.200 |
| Closure 2010-2024 | Open | All | A | 5.998 | 6.310 | 0.691 | 0.141 |

Appendix Table 6. Estimated observer mean CPUE in weight and number by management regime of vertical line South Atlantic Red Snapper discards for the closed season.

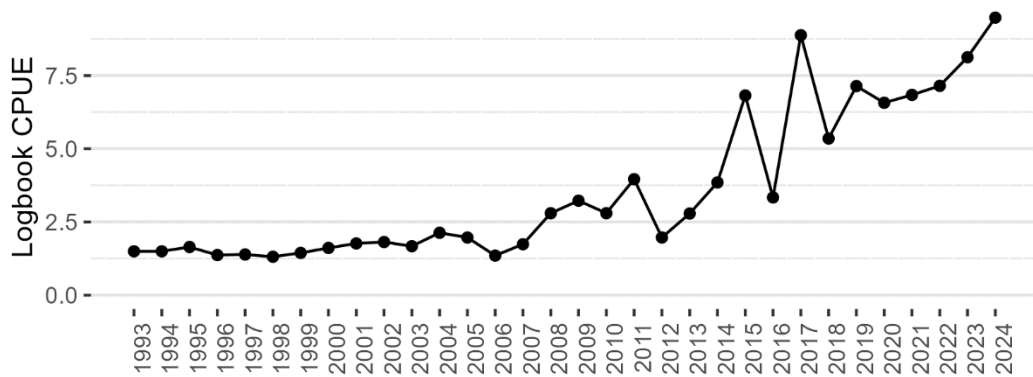
| Management Regime | Season | Number of Observer Trips (n) | Observer Discard CPUE (Weight) | Observer Discard CPUE (Number) |
|-------------------|--------|------------------------------|--------------------------------|--------------------------------|
| Closure 2010-2017 | Closed | 58 | 1.742 | 0.268 |
| Closure 2018-2024 | Closed | 97 | 2.249 | 0.348 |

Appendix Table 7. Time-series of CPUE expansion estimates for South Atlantic Red Snapper vertical line discards in weight (lbs.) and number (with associated standard errors).

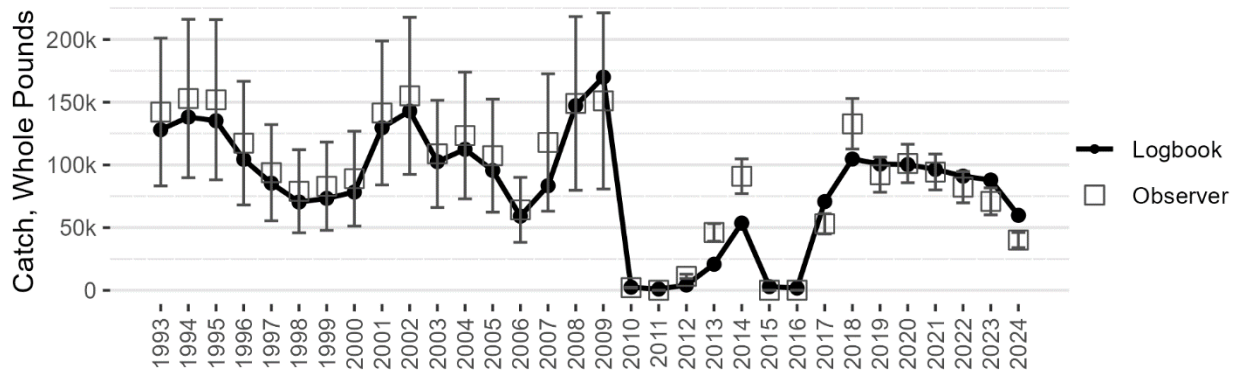
| Year | Season | Estimated Discards in Weight | SE of Estimated Discards in Weight | Estimated Discards in Number | SE of Estimated Discards in Number |
|------|--------|------------------------------|------------------------------------|------------------------------|------------------------------------|
| 1993 | Open | 62,548 | 21,899 | 17,258 | 5,205 |
| 1994 | Open | 67,503 | 23,513 | 18,658 | 5,598 |
| 1995 | Open | 65,953 | 23,580 | 18,067 | 5,572 |
| 1996 | Open | 50,953 | 18,211 | 13,959 | 4,303 |
| 1997 | Open | 41,785 | 14,363 | 11,605 | 3,435 |
| 1998 | Open | 34,353 | 12,247 | 9,419 | 2,896 |
| 1999 | Open | 35,723 | 12,939 | 9,743 | 3,048 |
| 2000 | Open | 38,174 | 13,920 | 10,388 | 3,274 |
| 2001 | Open | 63,462 | 21,588 | 17,692 | 5,185 |
| 2002 | Open | 70,011 | 23,633 | 19,574 | 5,694 |
| 2003 | Open | 50,380 | 16,477 | 14,265 | 4,035 |
| 2004 | Open | 55,004 | 18,900 | 15,278 | 4,521 |
| 2005 | Open | 46,643 | 16,647 | 12,784 | 3,935 |
| 2006 | Open | 28,963 | 9,779 | 8,097 | 2,356 |
| 2007 | Open | 53,386 | 22,915 | 14,950 | 5,763 |
| 2008 | Open | 64,566 | 27,714 | 17,672 | 6,812 |
| 2009 | Open | 65,216 | 27,993 | 17,815 | 6,867 |
| 2010 | Open | 225 | 61 | 46 | 10 |
| 2010 | Closed | 182,613 | 26,163 | 28,102 | 4,610 |
| 2011 | Closed | 177,523 | 25,433 | 27,319 | 4,482 |
| 2012 | Open | 1,204 | 325 | 245 | 56 |
| 2012 | Closed | 149,414 | 21,406 | 22,993 | 3,772 |
| 2013 | Open | 5,034 | 1,358 | 1,024 | 234 |
| 2013 | Closed | 139,426 | 19,975 | 21,456 | 3,520 |
| 2014 | Open | 9,946 | 2,684 | 2,023 | 462 |
| 2014 | Closed | 137,406 | 19,686 | 21,145 | 3,469 |
| 2015 | Closed | 160,137 | 22,943 | 24,643 | 4,043 |
| 2016 | Closed | 151,001 | 21,634 | 23,237 | 3,812 |
| 2017 | Open | 5,803 | 1,566 | 1,180 | 269 |
| 2017 | Closed | 131,238 | 18,802 | 20,196 | 3,313 |
| 2018 | Open | 14,535 | 3,922 | 2,956 | 675 |
| 2018 | Closed | 110,992 | 13,996 | 17,062 | 2,178 |
| 2019 | Open | 10,081 | 2,721 | 2,050 | 468 |
| 2019 | Closed | 140,699 | 17,742 | 21,628 | 2,761 |

| Year | Season | Estimated Discards in Weight | SE of Estimated Discards in Weight | Estimated Discards in Number | SE of Estimated Discards in Number |
|------|--------|------------------------------|------------------------------------|------------------------------|------------------------------------|
| 2020 | Open | 11,060 | 2,985 | 2,249 | 513 |
| 2020 | Closed | 133,749 | 16,865 | 20,560 | 2,624 |
| 2021 | Open | 10,323 | 2,786 | 2,099 | 479 |
| 2021 | Closed | 113,910 | 14,364 | 17,510 | 2,235 |
| 2022 | Open | 8,993 | 2,427 | 1,829 | 417 |
| 2022 | Closed | 118,507 | 14,943 | 18,217 | 2,325 |
| 2023 | Open | 7,756 | 2,093 | 1,577 | 360 |
| 2023 | Closed | 112,207 | 14,149 | 17,248 | 2,202 |
| 2024 | Open | 4,376 | 1,181 | 890 | 203 |
| 2024 | Closed | 101,436 | 12,791 | 15,593 | 1,990 |

Figures

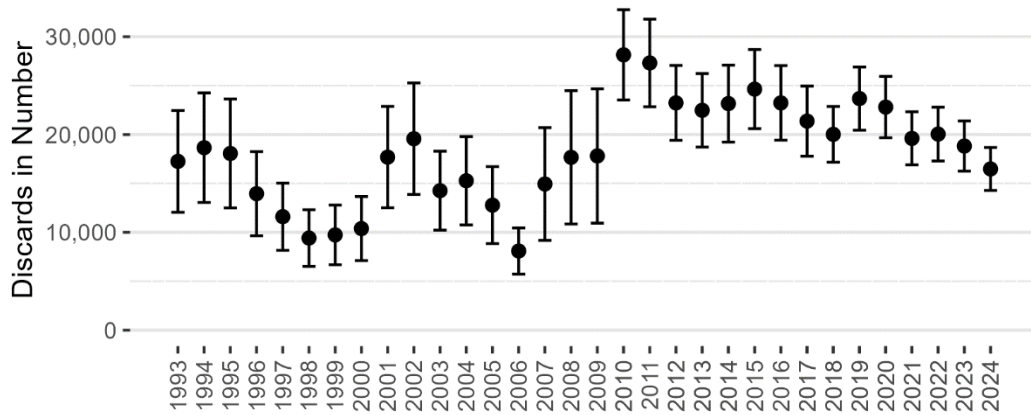


Appendix Figure 1. CPUE (catch in whole pounds per hour) time-series for logbook data from 1993-2024 for vertical line trips landing South Atlantic Red Snapper. The observer time period is from 2007-2024.

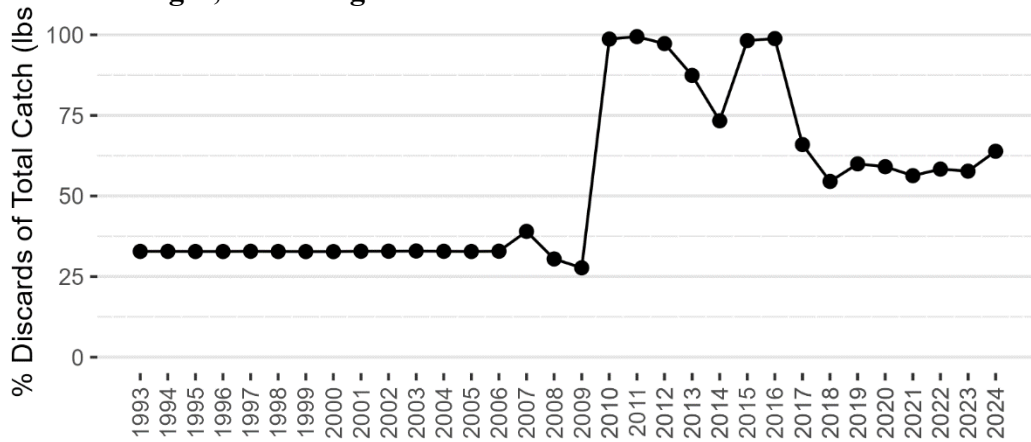


Appendix Figure 2. Comparison of vertical line reported annual logbook landings of South Atlantic Red Snapper (solid black line) with CPUE expansion estimates from observer data (open squares). Error bars (SE) are shown for observer estimates.

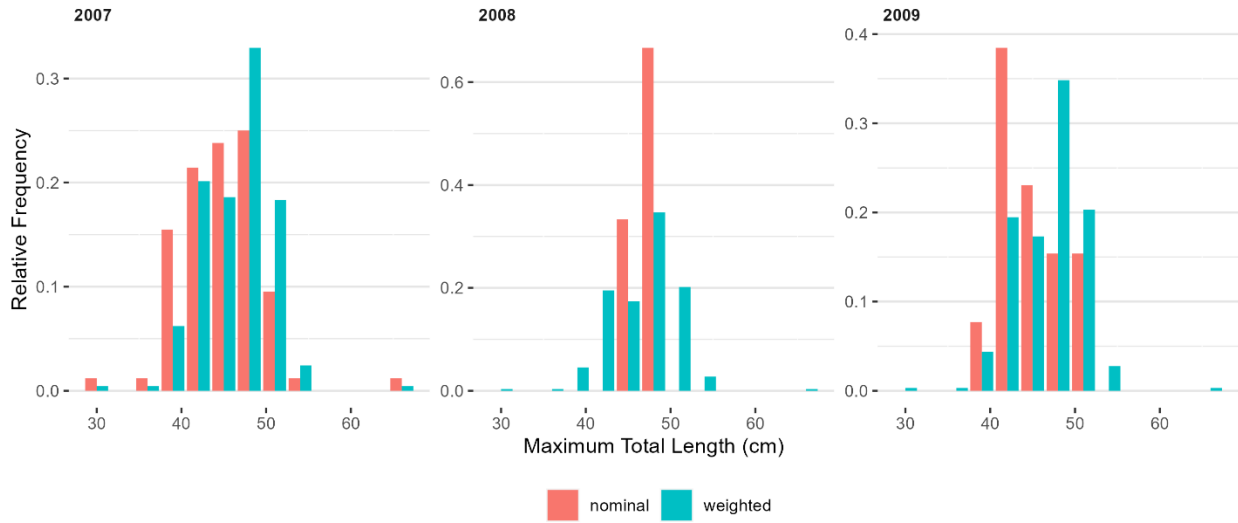
(A) Discards in Number



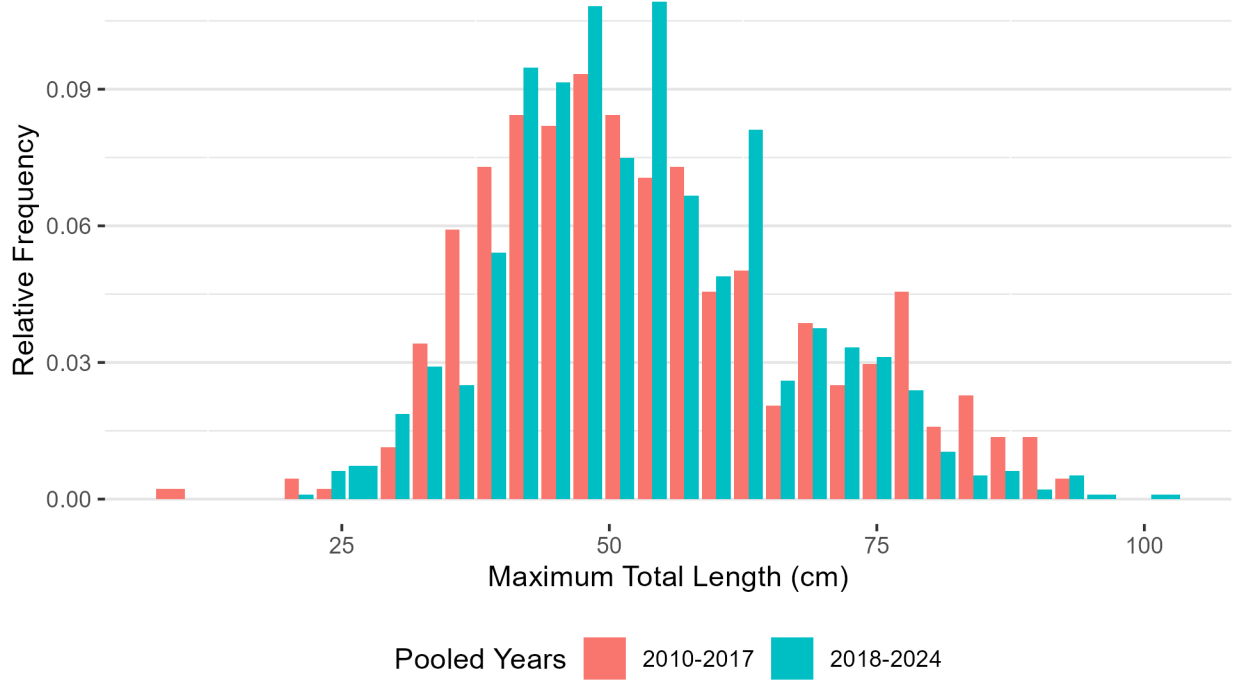
(B) Discards in Weight, Percentage of Total Catch



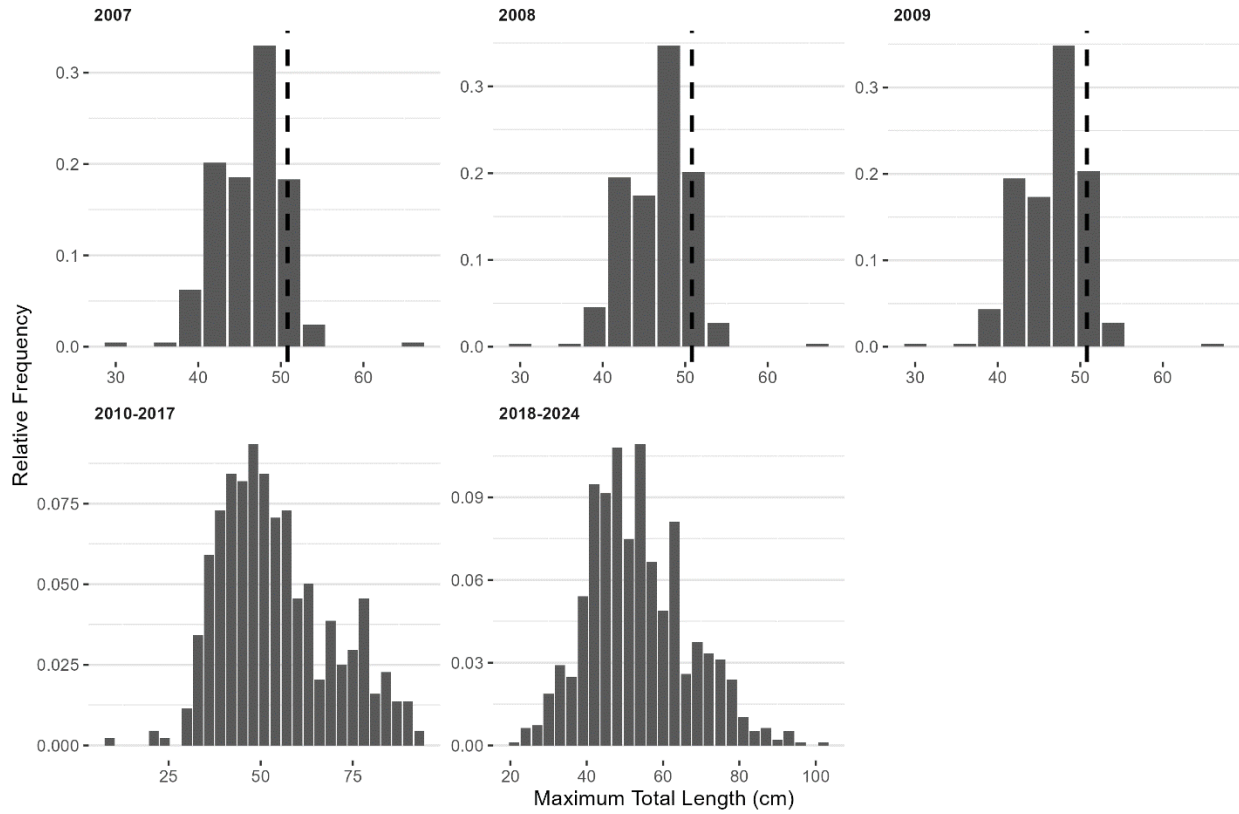
Appendix Figure 3. Observer CPUE expansion estimates of South Atlantic Red Snapper commercial vertical line annual discards (+/-SE) in (A) number and (B) weight expressed as percentage of total catch (kept + discards) for 1993-2024.



Appendix Figure 4. Comparison between nominal length frequency and weighted length frequency by stratified discard estimates from 2007-2009 during the 20-inch total length minimum size limit.



Appendix Figure 5. Comparison in nominal length frequencies during the two closure time periods (2010-2017 and 2018-2024).



Appendix Figure 6. Commercial discard length compositions for South Atlantic Red Snapper. The dashed line indicates the minimum size limit from 2007-2009 of 20 inches total length.