

SEDAR 73: Red Snapper observed discard lengths

Issues:

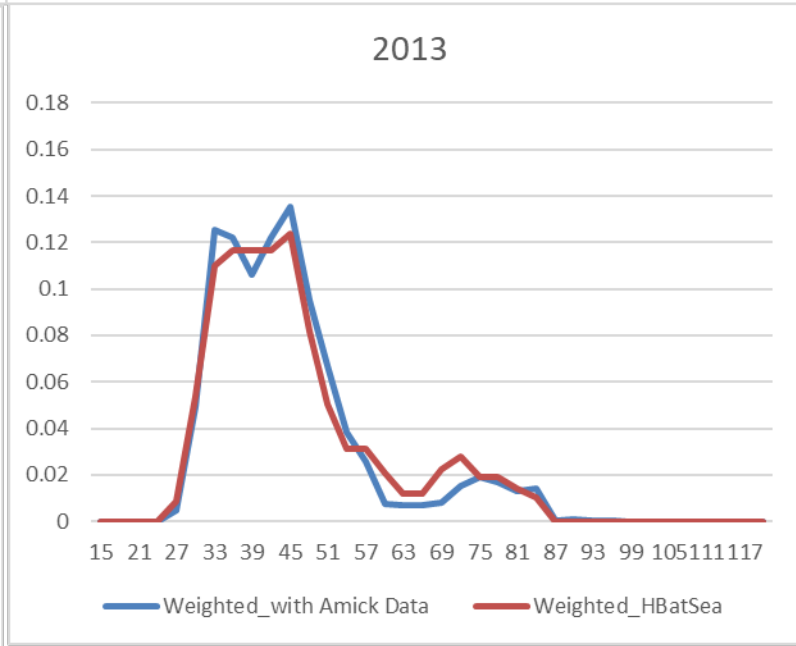
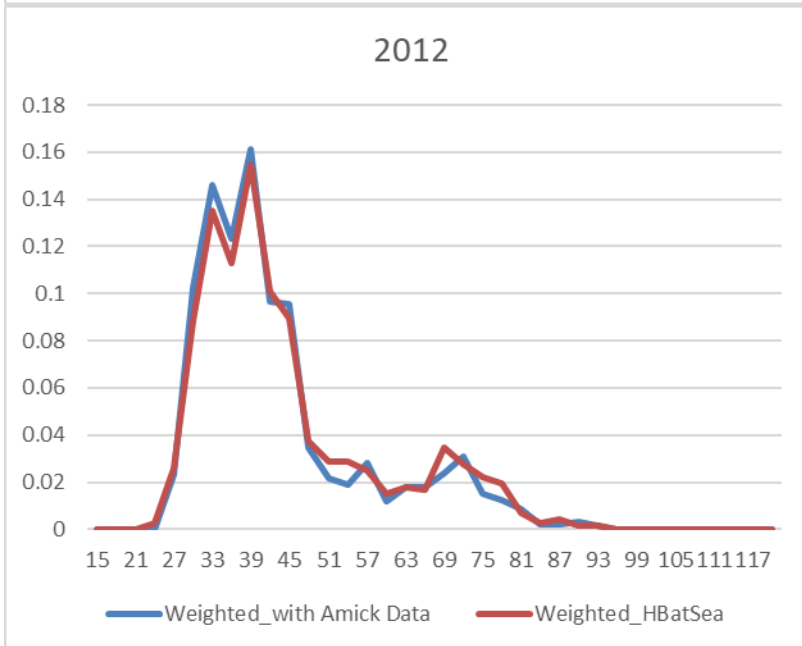
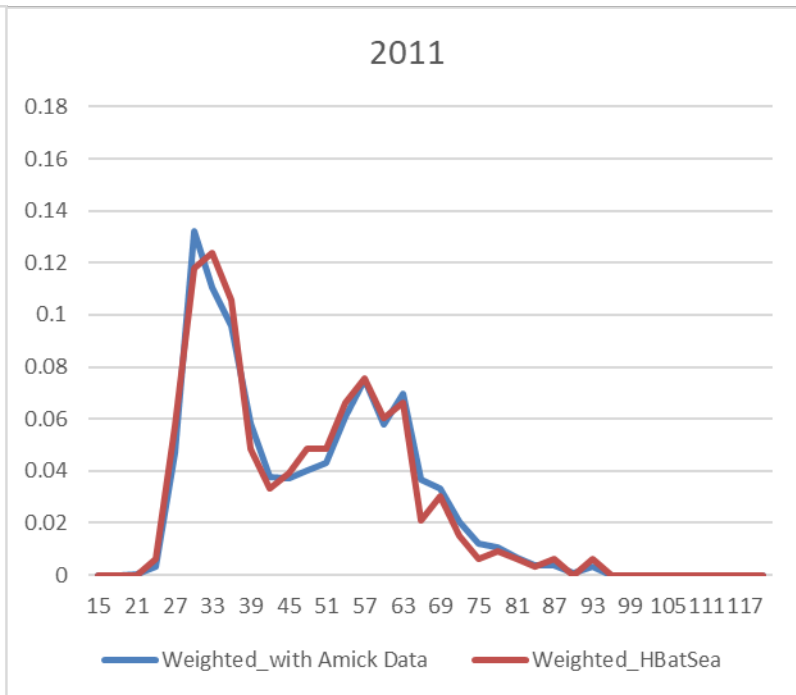
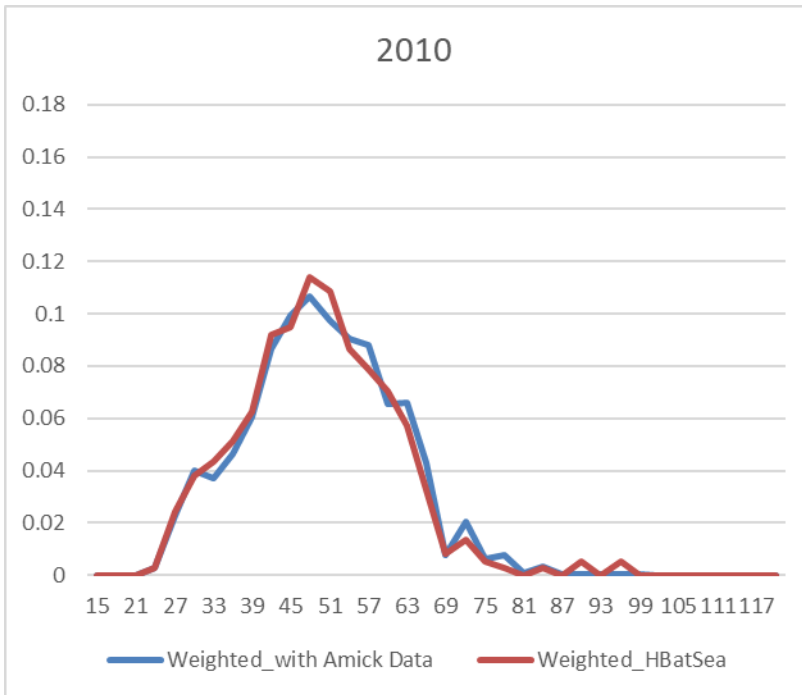
1. Review updated sample size table for observed discard lengths
2. Headboat at-sea discard lengths after incorporating Captain Amick's data and reweighting
3. Regional comparison of headboat at-sea, MARFIN charterboat and MyFishCount discard lengths
 - Are regional differences in discarded Red Snapper a concern when applying a spatially limited charterboat composition to characterize the coastwide general recreational fleet (CH & PR) discard selectivity

Year	Headboat at-sea					MARFIN Charter observer				Headboat (Steve Amick)				MyFishCount				
	N.fish	N.trips	units	%n.fish (FL)	Coverage	N.fish	N.trips	units	Coverage	N.fish	N.trips	units	Coverage	N.fish	N.trips	units	%n.fish(FL)	Coverage
2005	492	42	TL	99%	NC - FL													
2006	672	30	TL	98%	NC - FL													
2007	1498	64	TL	98%	NC - FL													
2008	1678	61	TL	95%	NC - FL													
2009	436	57	TL	86%	NC - FL													
2010	786	121	TL	41%	NC - FL					440	70	max TL in. Savannah, GA						
2011	762	115	TL	39%	NC - FL					447	67	max TL in. Savannah, GA						
2012	868	99	TL	68%	NC - FL					211	41	max TL in. Savannah, GA						
2013	715	118	TL	60%	NC - FL	425	50	TL	Florida	213	50	max TL in. Savannah, GA						
2014	613	58	TL	94%	NC - FL	351	41	TL	Florida									
2015	819	59	TL	92%	NC - FL	210	28	TL	Florida									
2016	727	58	TL	88%	NC - FL	10	4	TL	Florida									
2017	681	61	TL	85%	NC - FL	5	3	TL	Florida					82	49 in. (FL)		47%	GA-nFL
2018	788	68	TL	79%	NC - FL	46	3	TL	Florida					76	44 in. (FL)		82%	GA-nFL
2019	902	66	TL	93%	NC - FL									93	45 in. (FL)		83%	GA-nFL

SEDAR 73: Red Snapper observed discard lengths

Issues:

1. Review updated sample size table for observed discard lengths
2. Headboat at-sea discard lengths after incorporating Captain Amick's data and reweighting
3. Regional comparison of headboat at-sea, MARFIN charterboat and MyFishCount discard lengths
 - Are regional differences in discarded Red Snapper a concern when applying a spatially limited charterboat composition to characterize the coastwide general recreational fleet (CH & PR) discard selectivity



SEDAR 73: Red Snapper observed discard lengths

Issues:

1. Review updated sample size table for observed discard lengths
2. Headboat at-sea discard lengths after incorporating Captain Amick's data and reweighting
3. **Regional comparison of headboat at-sea, MARFIN charterboat and MyFishCount discard lengths**
 - Are regional differences in discarded Red Snapper a concern when applying a spatially limited charterboat composition to characterize the coastwide general recreational fleet (CH & PR) discard selectivity

