

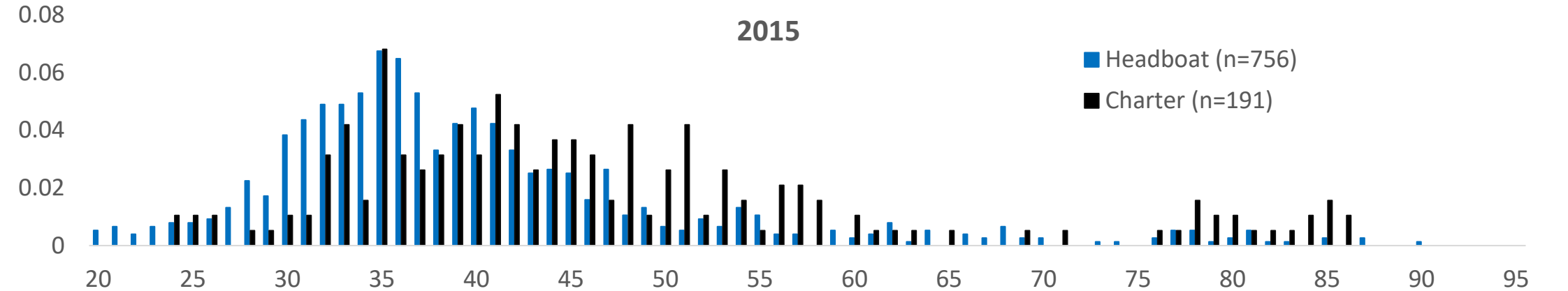
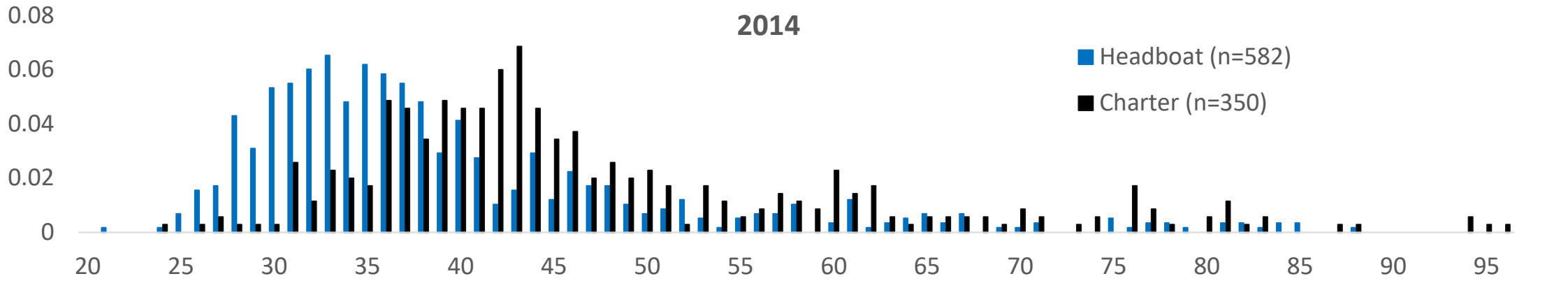
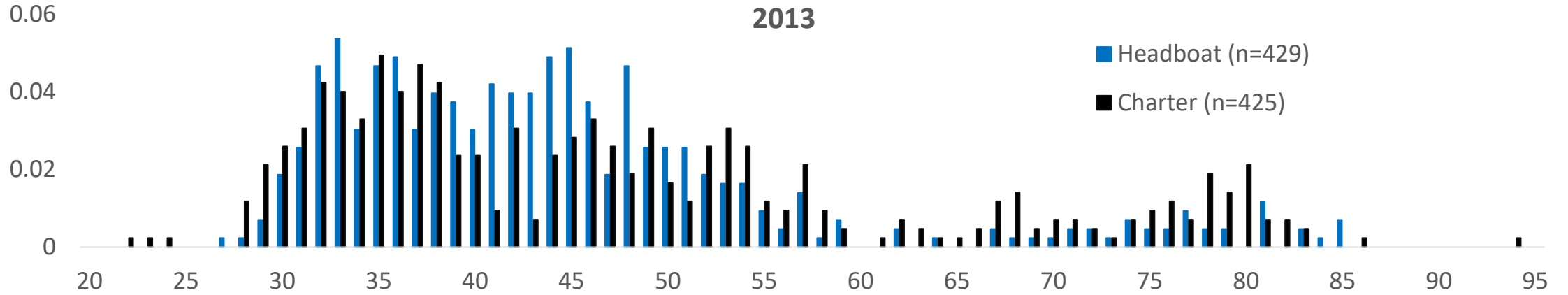
Headboat, Charter and Private Boat Discard Length Comps

Fish and Wildlife Research Institute

Florida Fish and Wildlife Conservation Commission

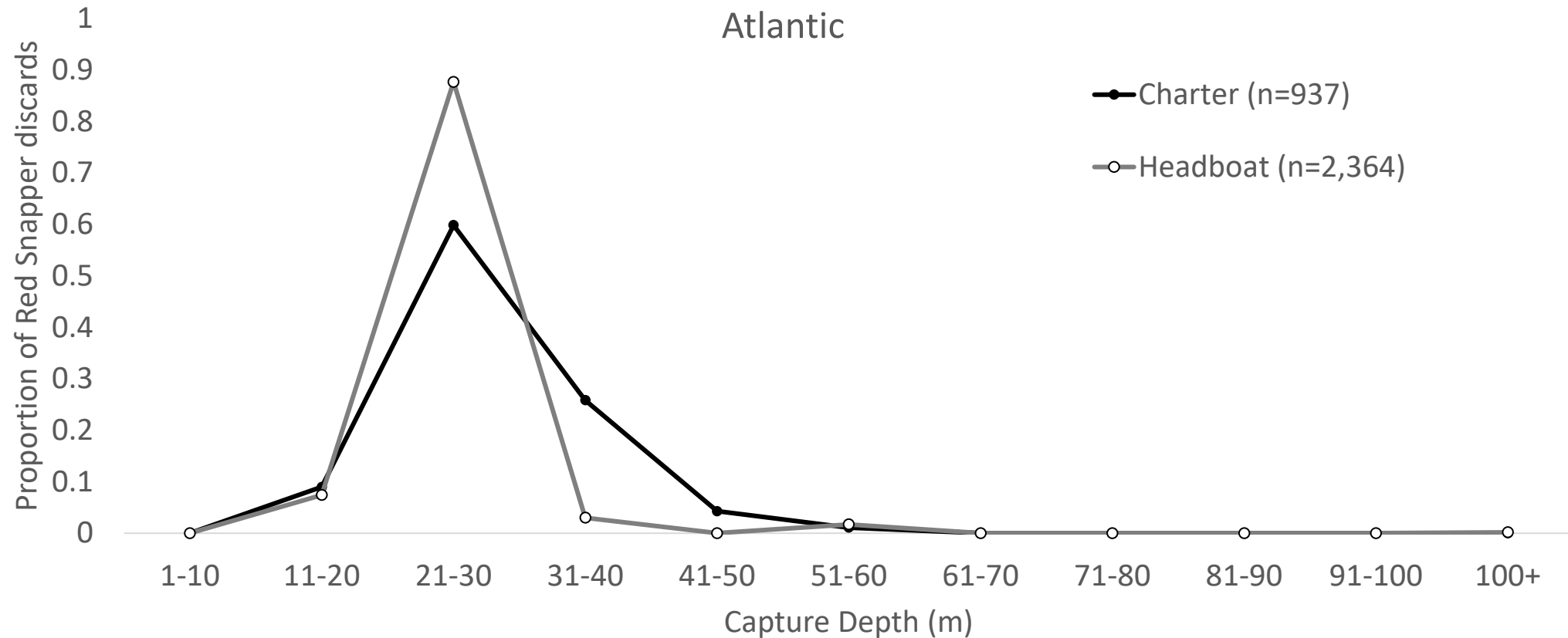


Florida Red Snapper Discard length comps (mm TL; MARFIN NA12NMF4330094)

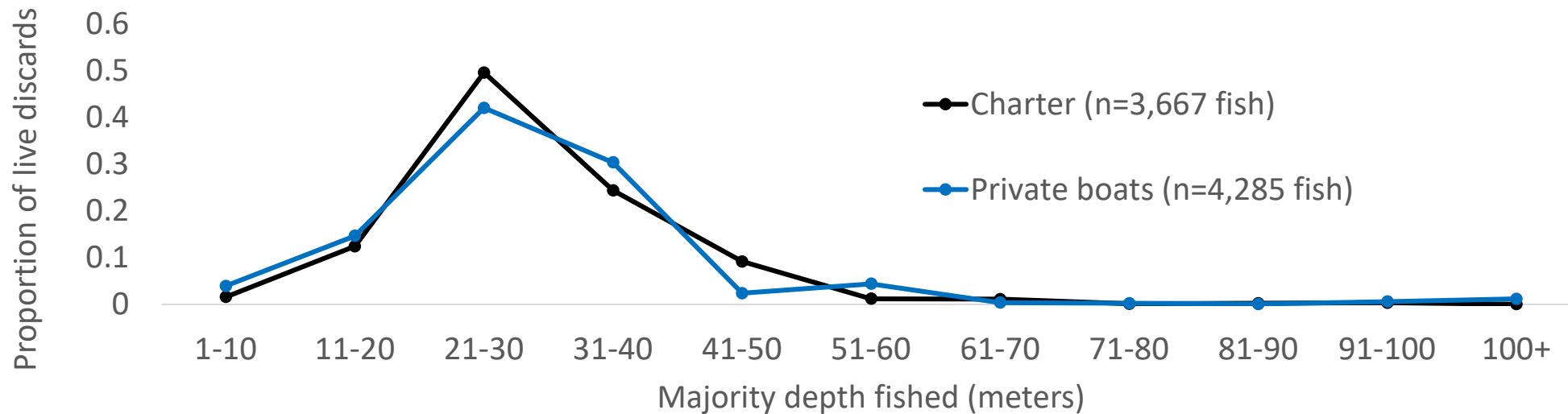


At-Sea Observer Data, 2013-2015

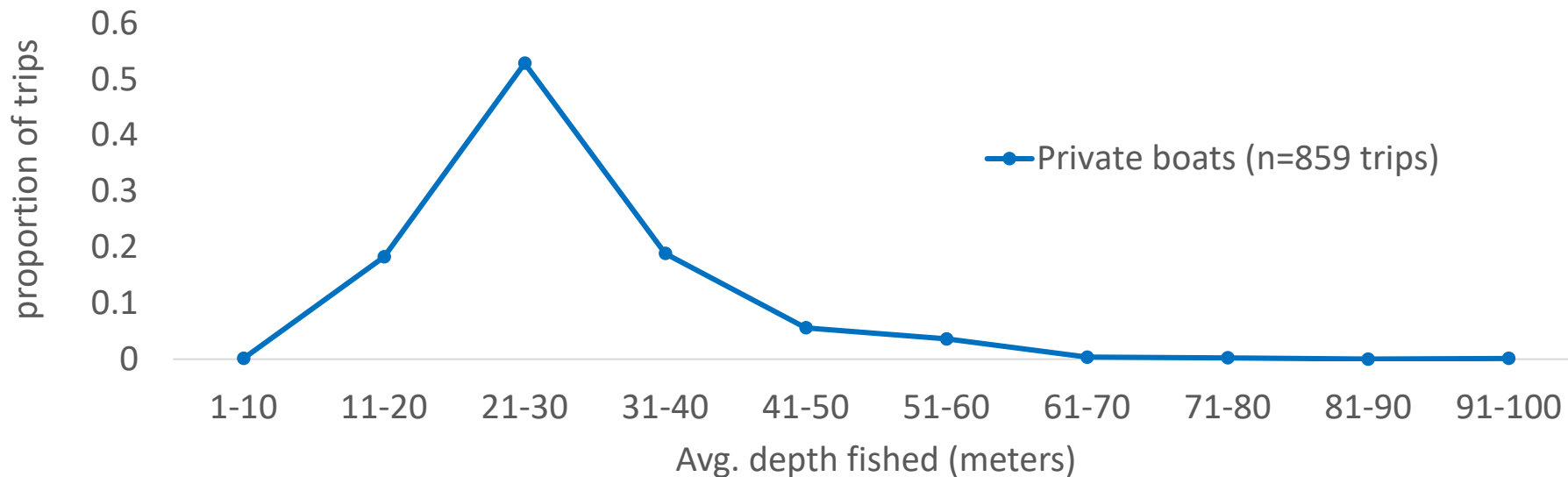
Source: A Survey to Characterize Harvest and Regulatory Discards in the Offshore Recreational Charter Fishery off the Atlantic Coast of Florida, MARFIN grant number NA12NMF4330094



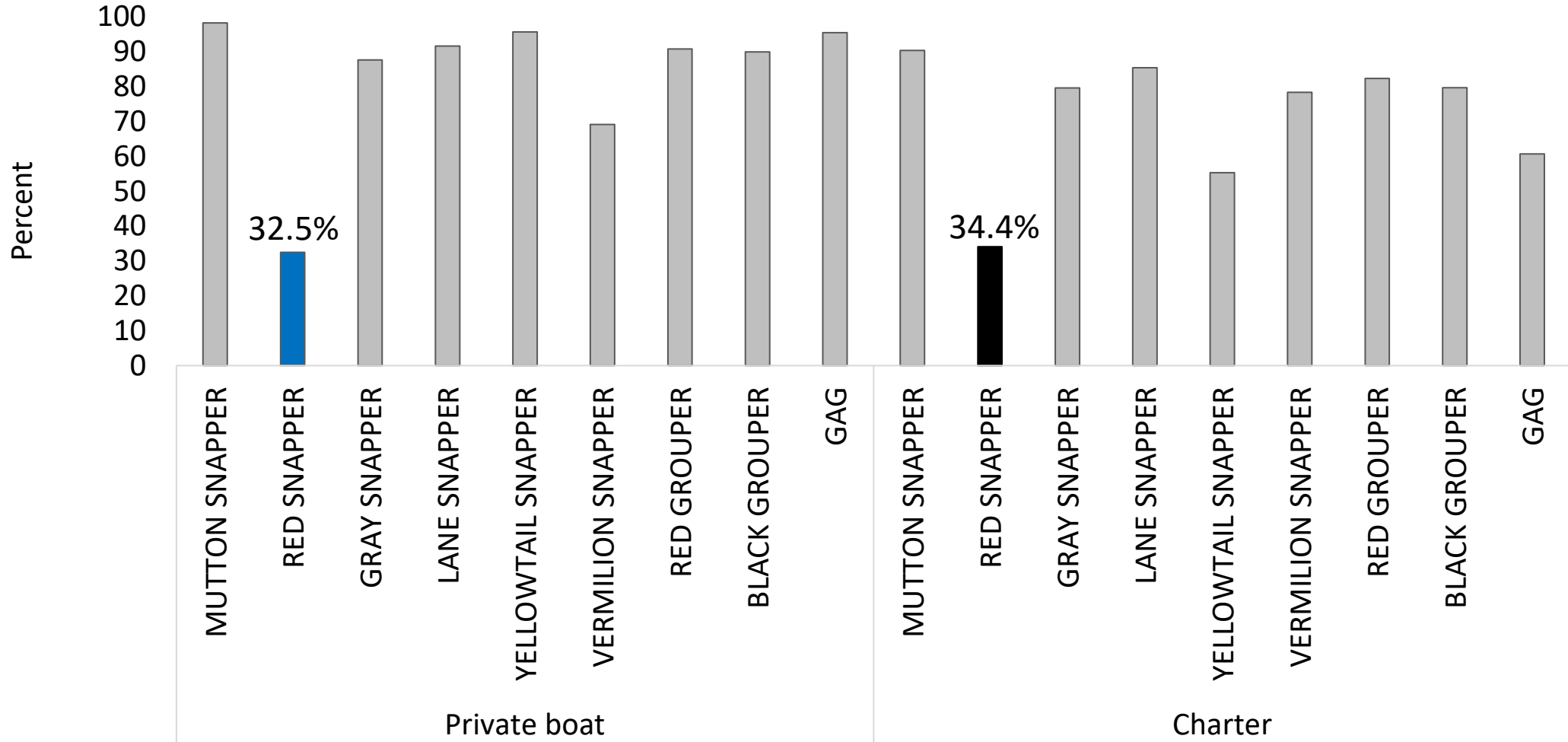
Year-round Dockside Intercepts (MARFIN NA16NMF4330163)



In-Season Dockside Intercepts (FL Red Snapper Survey)



Percent of reported discards under the legal size limit, regardless of whether the harvest season was open (source: MARFIN NA16NMF4330163)



Proportional mortality by depth applying varying levels of descender use within the Red Snapper recreational fishery. Overall morality is calculated by applying proportional mortality to the proportion of the catch within each 10 m depth category

Depth (m)	M (0% descend)	M (25% descend)	M (50% descend)	M (75% descend)	M (100% descend)
10-19	0.24	0.23	0.22	0.21	0.19
20-29	0.26	0.25	0.23	0.22	0.2
30-39	0.29	0.28	0.26	0.24	0.23
40-49	0.32	0.3	0.28	0.26	0.24
50-59	0.33	0.31	0.29	0.27	0.25
60+	0.4	0.37	0.34	0.31	0.28
Overall-Charter	0.279	0.263	0.248	0.233	0.218
Overall-Headboat	0.263	0.249	0.235	0.221	0.207