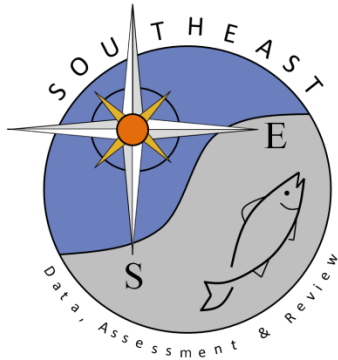


Continuity Run - Groundfish

Adam G. Pollack

SEDAR52-WP-18

1 August 2017



This information is distributed solely for the purpose of pre-dissemination peer review. It does not represent and should not be construed to represent any agency determination or policy.

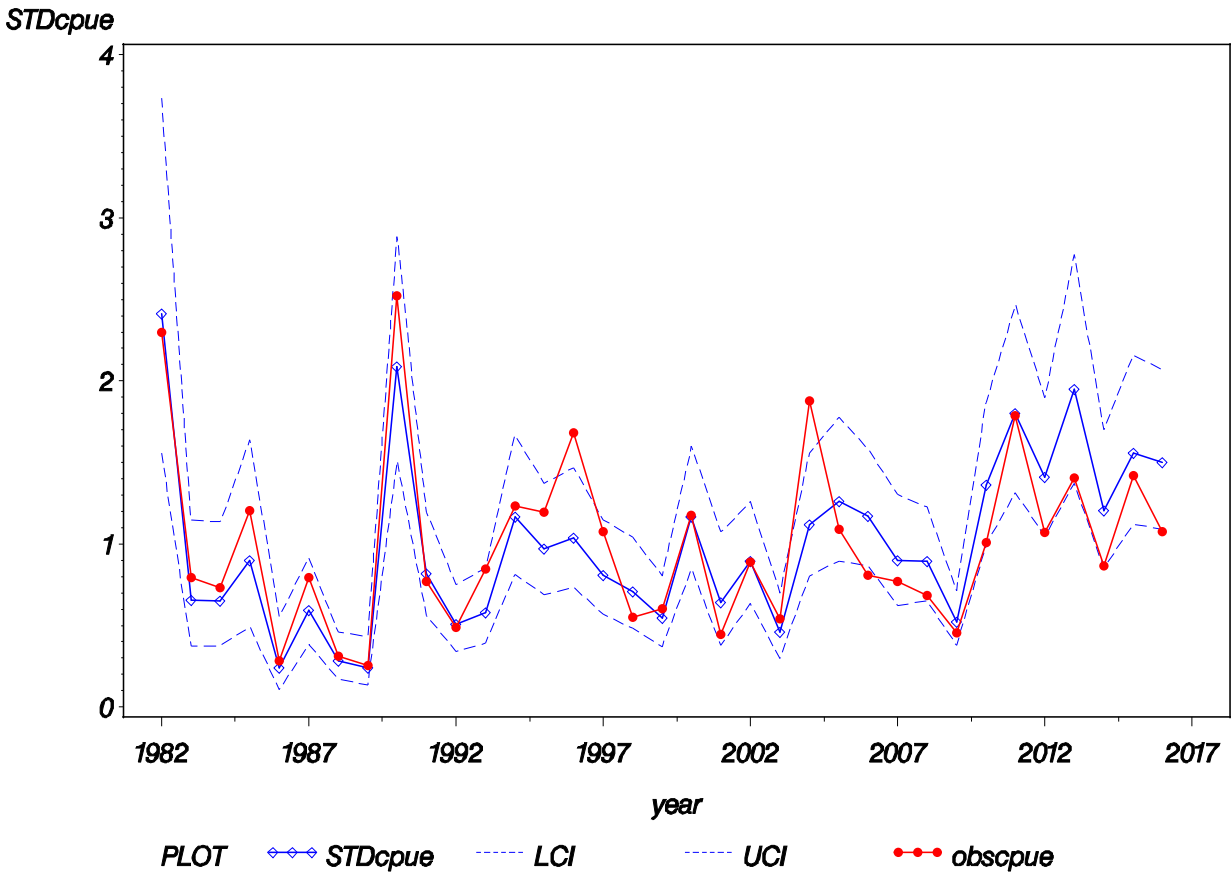
Please cite this document as:

Pollack, Adam G. 2017. Continuity run – Groundfish. SEDAR52-WP-18. SEDAR, North Charleston, SC. 3 pp.

SEAMAP Summer Groundfish Survey Western GOM

<i>SurveyYear</i>	<i>NominalFrequency</i>	<i>N</i>	<i>LoIndex</i>	<i>ScaledLoIndex</i>	<i>CV</i>	<i>LCL</i>	<i>UCL</i>
1982	0.34559	136	9.05026	2.41162	0.22141	1.55701	3.73530
1983	0.21805	133	2.45745	0.65484	0.28513	0.37436	1.14544
1984	0.18012	161	2.44843	0.65243	0.28268	0.37472	1.13596
1985	0.31169	77	3.37081	0.89822	0.30798	0.49193	1.64004
1986	0.15190	79	0.90737	0.24179	0.43342	0.10545	0.55439
1987	0.26404	178	2.21908	0.59132	0.22068	0.38231	0.91459
1988	0.26207	145	1.05449	0.28099	0.24750	0.17255	0.45759
1989	0.17730	141	0.90098	0.24008	0.30265	0.13281	0.43401
1990	0.46512	172	7.82600	2.08539	0.16346	1.50709	2.88558
1991	0.33514	185	3.06631	0.81708	0.19087	0.55971	1.19280
1992	0.31667	180	1.89884	0.50598	0.19966	0.34073	0.75139
1993	0.33146	178	2.16779	0.57765	0.19567	0.39201	0.85119
1994	0.37853	177	4.37045	1.16459	0.18116	0.81300	1.66824
1995	0.41477	176	3.64722	0.97187	0.17357	0.68860	1.37168
1996	0.41379	174	3.89918	1.03901	0.17425	0.73519	1.46839
1997	0.43558	163	3.03243	0.80805	0.17607	0.56973	1.14606
1998	0.34911	169	2.66058	0.70896	0.19453	0.48219	1.04238
1999	0.32961	179	2.04466	0.54484	0.19631	0.36929	0.80384
2000	0.49123	171	4.37014	1.16451	0.15988	0.84751	1.60006
2001	0.27586	116	2.39814	0.63903	0.26369	0.38047	1.07331
2002	0.39891	183	3.35599	0.89427	0.17319	0.63409	1.26121
2003	0.36496	137	1.71605	0.45727	0.21523	0.29878	0.69985
2004	0.44068	177	4.20249	1.11983	0.16646	0.80455	1.55868
2005	0.49324	148	4.73479	1.26168	0.17236	0.89606	1.77648
2006	0.51136	176	4.38703	1.16901	0.15191	0.86422	1.58129
2007	0.41935	155	3.38154	0.90107	0.18593	0.62321	1.30282
2008	0.41262	206	3.35372	0.89366	0.15916	0.65132	1.22617
2009	0.29605	304	1.95025	0.51968	0.16033	0.37788	0.71468
2010	0.44500	200	5.10953	1.36153	0.15898	0.99267	1.86746
2011	0.49708	171	6.76173	1.80179	0.15801	1.31614	2.46665
2012	0.52273	176	5.28886	1.40932	0.14964	1.04654	1.89785

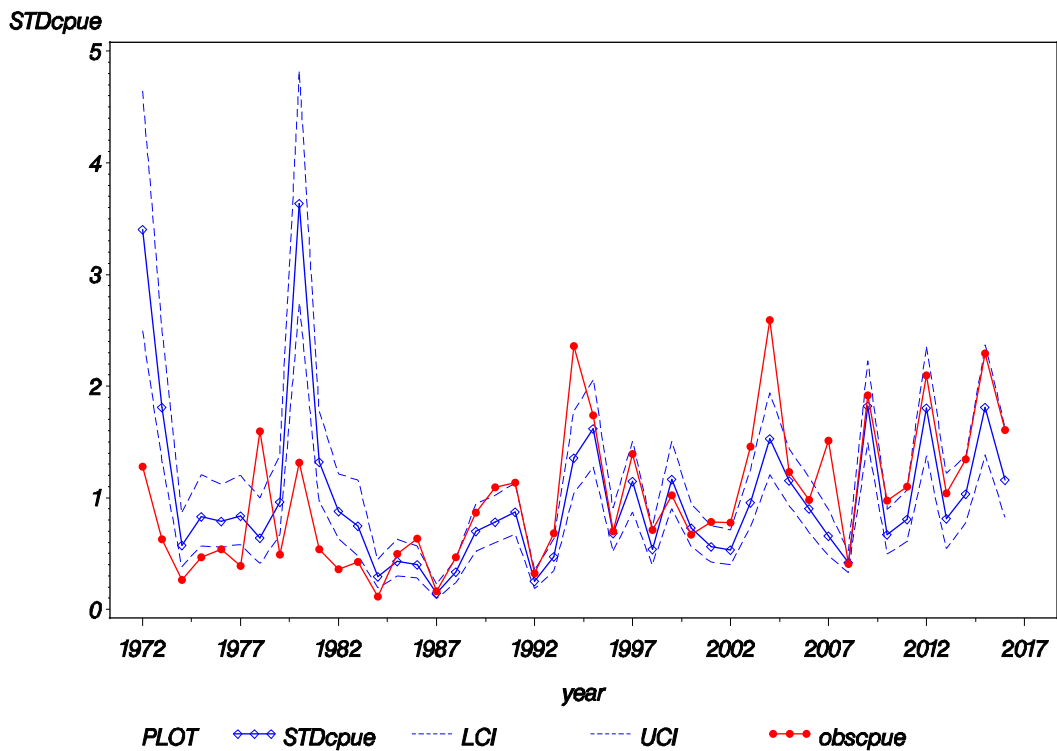
<i>SurveyYear</i>	<i>NominalFrequency</i>	<i>N</i>	<i>LoIndex</i>	<i>ScaledLoIndex</i>	<i>CV</i>	<i>LCL</i>	<i>UCL</i>
2013	0.48227	141	7.32352	1.95149	0.17713	1.37311	2.77351
2014	0.44375	160	4.51905	1.20419	0.17366	0.85304	1.69988
2015	0.49102	167	5.83873	1.55584	0.16487	1.12130	2.15879
2016	0.49693	163	5.63340	1.50113	0.16129	1.08949	2.06829



SEAMAP Fall Groundfish Survey Western GOM

<i>SurveyYear</i>	<i>NominalFrequency</i>	<i>N</i>	<i>LoIndex</i>	<i>ScaledLoIndex</i>	<i>CV</i>	<i>LCL</i>	<i>UCL</i>
1972	0.61345	119	49.4914	3.40575	0.15608	2.49721	4.64483
1973	0.52740	146	26.3237	1.81147	0.16065	1.31638	2.49275
1974	0.38129	139	8.3841	0.57695	0.20298	0.38602	0.86232
1975	0.33690	187	12.0414	0.82863	0.18973	0.56888	1.20698
1976	0.37186	199	11.4869	0.79047	0.17527	0.55821	1.11937
1977	0.42069	145	12.1533	0.83633	0.18228	0.58256	1.20064
1978	0.25275	182	9.3225	0.64153	0.22520	0.41117	1.00094
1979	0.39024	164	13.9730	0.96155	0.18397	0.66759	1.38496
1980	0.70161	124	52.8714	3.63834	0.14172	2.74421	4.82381
1981	0.50289	173	19.1532	1.31803	0.15463	0.96918	1.79244
1982	0.50000	150	12.7302	0.87603	0.16364	0.63288	1.21259
1983	0.36585	123	10.8469	0.74643	0.22267	0.48074	1.15894
1984	0.34028	144	4.2443	0.29207	0.21373	0.19139	0.44572
1985	0.33023	215	6.3012	0.43361	0.18818	0.29859	0.62970
1986	0.45789	190	5.8253	0.40087	0.17353	0.28405	0.56574
1987	0.45313	128	2.1412	0.14734	0.20654	0.09790	0.22175
1988	0.53039	181	4.8470	0.33355	0.15959	0.24289	0.45805
1989	0.56667	180	10.2118	0.70273	0.15098	0.52046	0.94882
1990	0.65714	175	11.3665	0.78218	0.13520	0.59759	1.02379
1991	0.68156	179	12.6965	0.87371	0.13008	0.67430	1.13209
1992	0.53073	179	3.6947	0.25425	0.15981	0.18506	0.34929
1993	0.57062	177	6.8323	0.47016	0.15118	0.34808	0.63507
1994	0.65363	179	19.7279	1.35757	0.13381	1.04005	1.77203
1995	0.73446	177	23.5624	1.62145	0.12053	1.27523	2.06167
1996	0.61878	181	9.9512	0.68479	0.14123	0.51700	0.90703
1997	0.64045	178	16.6476	1.14560	0.13681	0.87248	1.50422
1998	0.55249	181	7.8497	0.54018	0.15235	0.39899	0.73132
1999	0.68132	182	16.9297	1.16502	0.12793	0.90296	1.50314
2000	0.68156	179	10.5863	0.72849	0.13029	0.56200	0.94432
2001	0.58696	184	8.2043	0.56458	0.14521	0.42292	0.75369
2002	0.59669	181	7.7407	0.53267	0.14546	0.39882	0.71145

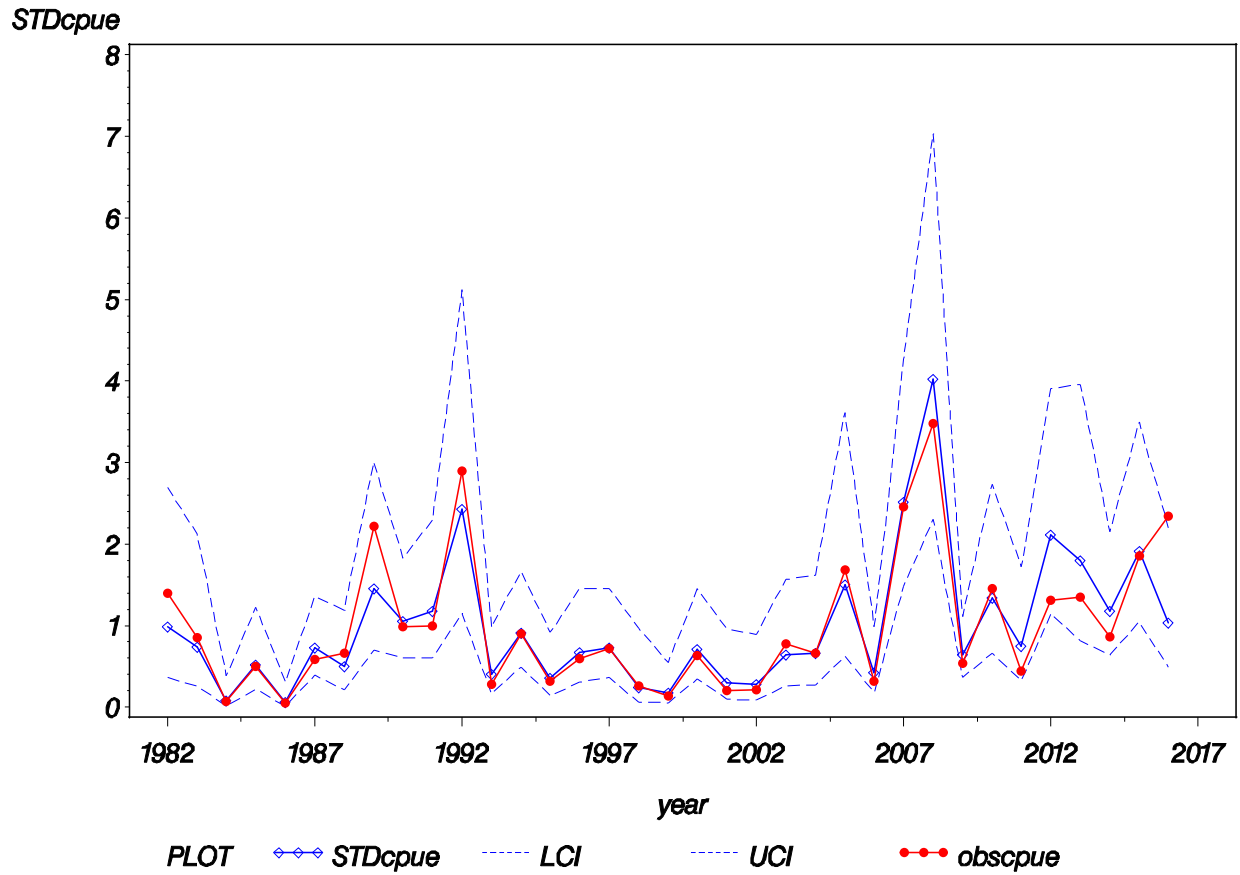
<i>SurveyYear</i>	<i>NominalFrequency</i>	<i>N</i>	<i>LolIndex</i>	<i>ScaledLolIndex</i>	<i>CV</i>	<i>LCL</i>	<i>UCL</i>
2003	0.65574	183	13.8912	0.95592	0.13277	0.73384	1.24520
2004	0.78395	162	22.2307	1.52980	0.11985	1.20477	1.94252
2005	0.77957	186	16.7797	1.15470	0.10964	0.92793	1.43687
2006	0.66477	176	13.1407	0.90427	0.13527	0.69078	1.18376
2007	0.56647	173	9.5407	0.65654	0.15545	0.48200	0.89429
2008	0.62105	285	6.0593	0.41697	0.11548	0.33123	0.52490
2009	0.73260	273	26.4988	1.82352	0.10011	1.49339	2.22662
2010	0.59659	176	9.6922	0.66697	0.14962	0.49529	0.89815
2011	0.64972	177	11.7340	0.80747	0.14018	0.61089	1.06732
2012	0.78030	132	26.2132	1.80386	0.13567	1.37689	2.36324
2013	0.61538	91	11.8128	0.81290	0.20372	0.54310	1.21671
2014	0.70068	147	15.0056	1.03261	0.14229	0.77798	1.37059
2015	0.78472	144	26.3184	1.81110	0.13534	1.38332	2.37117
2016	0.63248	117	16.8718	1.16103	0.17235	0.82458	1.63476



SEAMAP / DISL Summer Groundfish Survey Eastern GOM (only statistical zones 10 and 11)

<i>SurveyYear</i>	<i>NominalFrequency</i>	<i>N</i>	<i>LoIndex</i>	<i>ScaledLoIndex</i>	<i>CV</i>	<i>LCL</i>	<i>UCL</i>
1982	0.19444	36	3.0313	0.98808	0.53515	0.36217	2.69574
1983	0.28571	21	2.2572	0.73574	0.56930	0.25498	2.12296
1984	0.06897	29	0.2303	0.07506	0.97292	0.01467	0.38397
1985	0.27778	36	1.5931	0.51929	0.44930	0.22027	1.22424
1986	0.05714	35	0.1848	0.06025	0.97367	0.01177	0.30849
1987	0.22727	88	2.2354	0.72865	0.32002	0.39021	1.36064
1988	0.15873	63	1.5384	0.50145	0.45280	0.21141	1.18941
1989	0.27451	51	4.4477	1.44978	0.37645	0.70000	3.00266
1990	0.36923	65	3.2225	1.05040	0.28309	0.60282	1.83029
1991	0.36364	44	3.6035	1.17458	0.34429	0.60140	2.29402
1992	0.28889	45	7.4466	2.42727	0.38615	1.15158	5.11613
1993	0.20455	44	1.2268	0.39988	0.47069	0.16344	0.97834
1994	0.33333	60	2.7783	0.90561	0.31213	0.49216	1.66639
1995	0.19048	42	1.0932	0.35634	0.50070	0.13837	0.91766
1996	0.26087	46	2.0525	0.66903	0.40421	0.30729	1.45659
1997	0.35714	42	2.2420	0.73080	0.35572	0.36642	1.45753
1998	0.08824	34	0.7260	0.23666	0.80204	0.05781	0.96887
1999	0.11628	43	0.5293	0.17252	0.63195	0.05412	0.54995
2000	0.32558	43	2.1746	0.70884	0.36987	0.34636	1.45067
2001	0.14706	34	0.9252	0.30158	0.62990	0.09491	0.95832
2002	0.11364	44	0.8603	0.28043	0.63222	0.08793	0.89435
2003	0.21429	42	1.9630	0.63986	0.47091	0.26143	1.56606
2004	0.23684	38	2.0425	0.66578	0.46666	0.27402	1.61760
2005	0.28125	32	4.6128	1.50356	0.46074	0.62521	3.61592
2006	0.22222	45	1.2932	0.42154	0.44660	0.17965	0.98913
2007	0.57500	40	7.7184	2.51586	0.26942	1.48170	4.27182
2008	0.43396	53	12.3424	4.02310	0.28484	2.30121	7.03339
2009	0.27778	90	1.9562	0.63765	0.28460	0.36491	1.11425
2010	0.35000	40	4.1148	1.34126	0.36716	0.65862	2.73147
2011	0.28571	35	2.2928	0.74737	0.43436	0.32541	1.71647
2012	0.43902	41	6.4926	2.11630	0.31404	1.14602	3.90806

<i>SurveyYear</i>	<i>NominalFrequency</i>	<i>N</i>	<i>LoIndex</i>	<i>ScaledLoIndex</i>	<i>CV</i>	<i>LCL</i>	<i>UCL</i>
2013	0.29730	37	5.5116	1.79656	0.41089	0.81540	3.95834
2014	0.33333	60	3.5997	1.17334	0.30941	0.64090	2.14811
2015	0.29851	67	5.8626	1.91096	0.30970	1.04323	3.50042
2016	0.30000	40	3.1741	1.03463	0.39054	0.48700	2.19806



SEAMAP / DISL Fall Groundfish Survey Eastern GOM (only statistical zones 10 and 11)

<i>SurveyYear</i>	<i>NominalFrequency</i>	<i>N</i>	<i>LoIndex</i>	<i>ScaledLoIndex</i>	<i>CV</i>	<i>LCL</i>	<i>UCL</i>
1972	0.67692	65	36.8563	3.02803	0.20923	2.00154	4.58095
1973	0.51304	115	7.8419	0.64427	0.19223	0.44016	0.94303
1974	0.40385	104	8.0699	0.66300	0.23504	0.41696	1.05422
1975	0.44086	93	8.1690	0.67115	0.23444	0.42258	1.06593
1976	0.45370	108	9.4642	0.77755	0.21392	0.50933	1.18703
1977	0.43299	97	10.5791	0.86915	0.23007	0.55187	1.36886
1978	0.45985	137	5.9389	0.48792	0.19137	0.33391	0.71299
1979	0.39450	109	4.9189	0.40412	0.22751	0.25786	0.63335
1980	0.49541	109	8.5036	0.69864	0.20333	0.46712	1.04491
1981	0.59434	106	25.1795	2.06869	0.18393	1.43636	2.97940
1982	0.71545	123	28.6372	2.35276	0.14673	1.75716	3.15026
1983	0.50505	99	5.2478	0.43115	0.21135	0.28382	0.65494
1984	0.34146	82	3.3965	0.27905	0.28540	0.15945	0.48836
1985	0.21348	89	2.2989	0.18887	0.34601	0.09640	0.37004
1986	0.12500	40	1.7376	0.14275	0.66083	0.04283	0.47581
1987	0.23810	42	3.0317	0.24908	0.47593	0.10089	0.61492
1988	0.37143	35	4.4144	0.36268	0.41467	0.16351	0.80446
1989	0.67442	43	37.3716	3.07036	0.24541	1.89296	4.98009
1990	0.71698	53	18.6588	1.53297	0.21623	0.99967	2.35075
1991	0.77778	45	29.9820	2.46325	0.21496	1.61028	3.76805
1992	0.43750	32	3.5994	0.29572	0.38701	0.14008	0.62428
1993	0.50000	70	11.6201	0.95468	0.25067	0.58269	1.56414
1994	0.53061	49	6.3221	0.51941	0.28229	0.29854	0.90368
1995	0.64103	39	12.8704	1.05741	0.27811	0.61258	1.82525
1996	0.55814	43	8.6346	0.70940	0.29263	0.39987	1.25853
1997	0.50000	44	13.1466	1.08009	0.30853	0.59095	1.97413
1998	0.46512	43	3.8690	0.31787	0.33064	0.16691	0.60537
1999	0.54762	42	9.2076	0.75647	0.30072	0.41997	1.36259
2000	0.67442	43	26.2640	2.15779	0.25138	1.31522	3.54013
2001	0.44186	43	4.2150	0.34629	0.33982	0.17878	0.67077
2002	0.46000	50	6.2864	0.51647	0.30685	0.28346	0.94103

<i>SurveyYear</i>	<i>NominalFrequency</i>	<i>N</i>	<i>LoIndex</i>	<i>ScaledLoIndex</i>	<i>CV</i>	<i>LCL</i>	<i>UCL</i>
2003	0.65333	75	13.4565	1.10555	0.20060	0.74312	1.64475
2004	0.41860	43	5.6121	0.46108	0.34877	0.23415	0.90796
2005	0.69767	43	10.0543	0.82604	0.24523	0.50944	1.33939
2006	0.91304	46	37.3980	3.07253	0.18185	2.14203	4.40723
2007	0.77419	31	28.1708	2.31444	0.27004	1.36146	3.93449
2008	0.54054	37	7.2608	0.59653	0.30735	0.32710	1.08790
2009	0.82759	58	28.1269	2.31084	0.19187	1.57985	3.38004
2010	0.46341	41	4.2701	0.35082	0.34670	0.17884	0.68822
2011	0.45000	20	4.5809	0.37635	0.46456	0.15546	0.91109
2012	0.64706	17	15.7234	1.29180	0.40760	0.58975	2.82958
2013	0.51613	31	9.4013	0.77239	0.33594	0.40161	1.48548
2014	0.52174	23	6.5509	0.53821	0.41728	0.24151	1.19937
2015	0.55556	27	7.3002	0.59977	0.35935	0.29873	1.20416
2016	0.25000	12	3.4883	0.28659	0.80296	0.06991	1.17480

