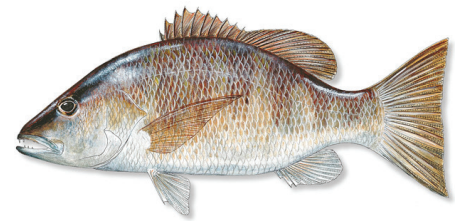
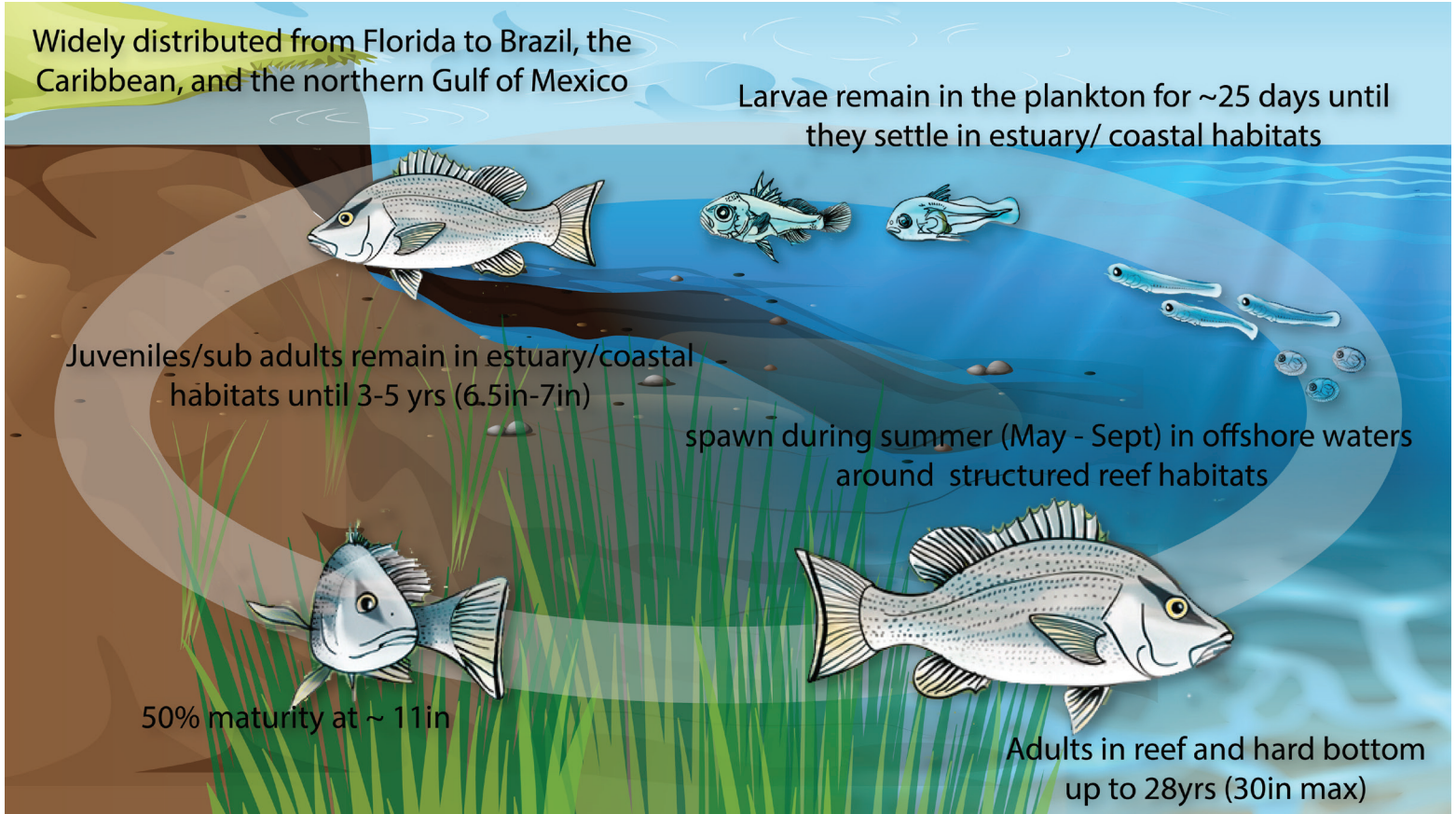




NOAA FISHERIES



Gray Snapper (*Lutjanus griseus* aka mangrove snapper)



Current Regulations:

Bag limit of 10 per angler



in AL, MS, LA, and Federal Waters

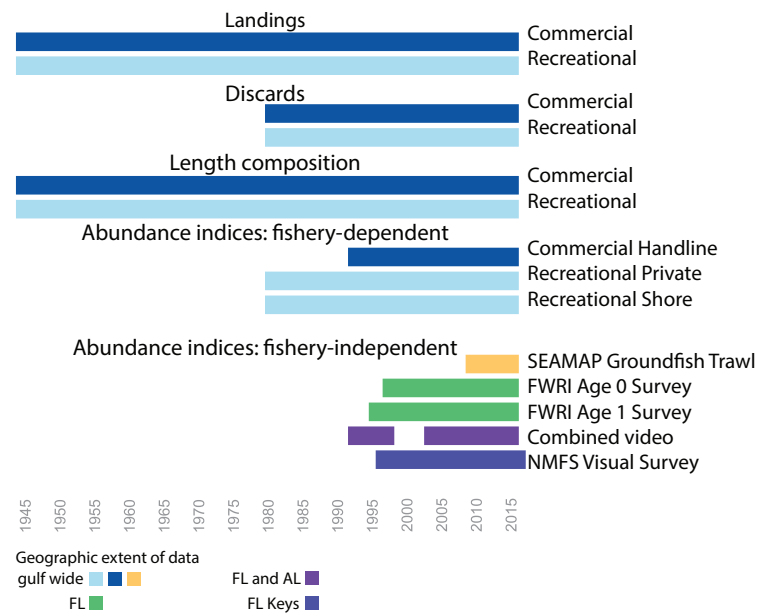


in FL State Waters

5 fish/person/day limit in FL

No regulations in TX

Data Sources for Stock Assessment:



Management Unit:
Reef Fish



Management Unit Definition:
Gulf of Mexico

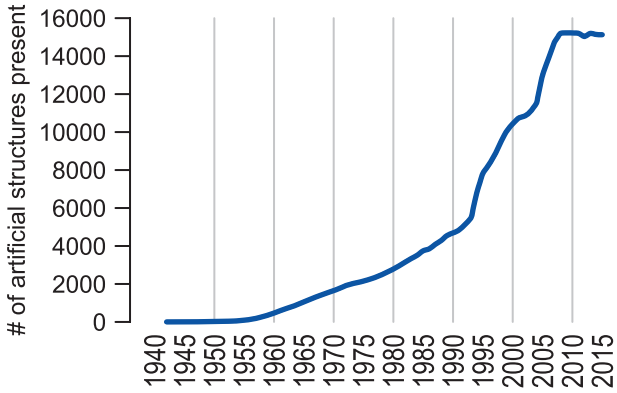


Management Entity:
Gulf of Mexico Fishery
Management Council



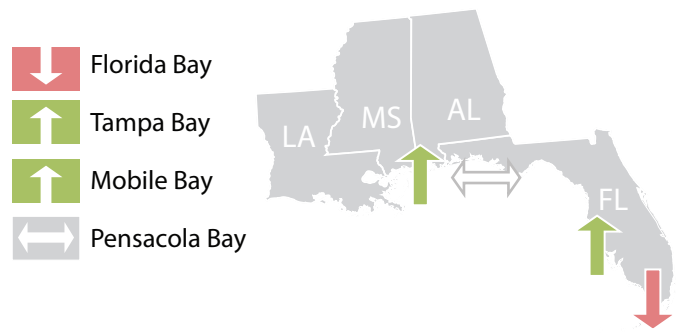


Gulf-wide artificial reef numbers

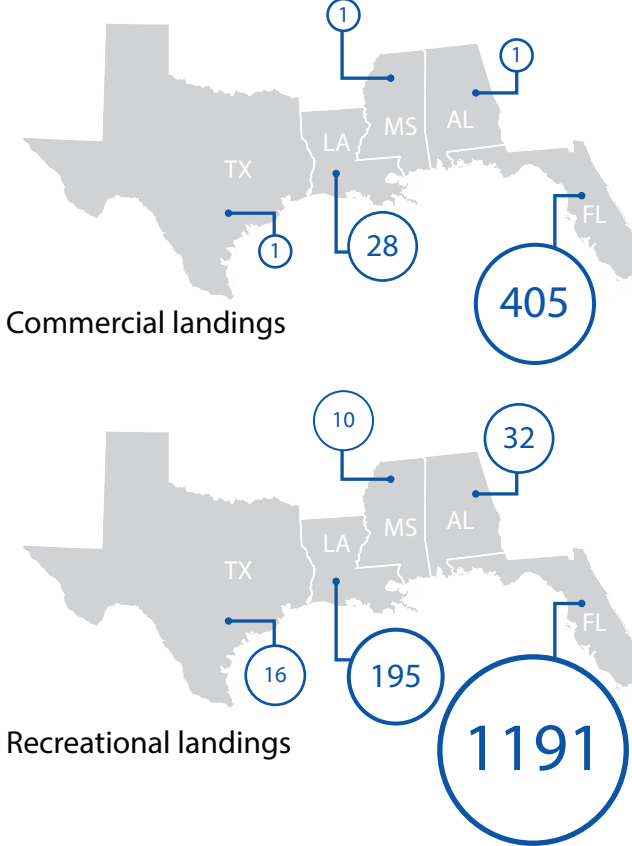


Juvenile and subadult gray snapper require seagrass habitats for nurseries and protection before transitioning into adults

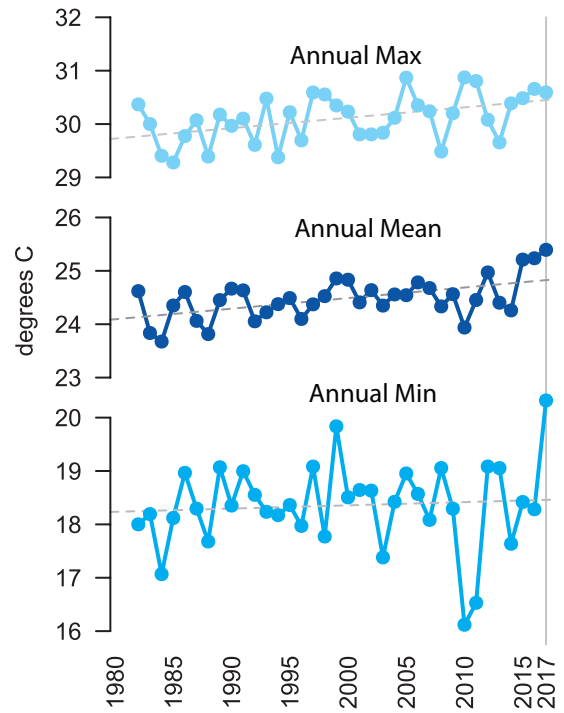
Trends in seagrass cover from 1980 - 2014



Average annual landings by state (1981-2015) in 1000s of lbs

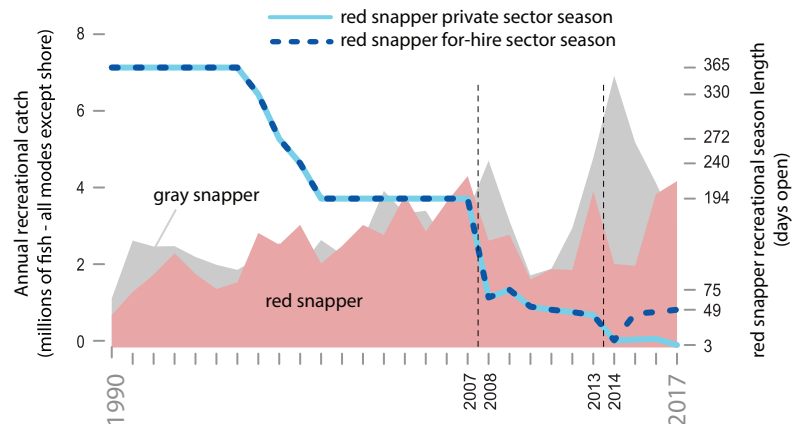
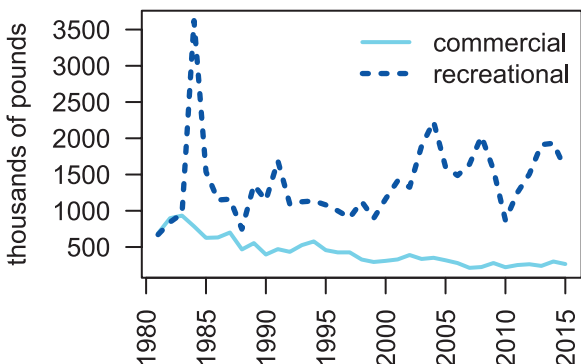


Sea surface temperatures in the adult range (Northern Gulf of Mexico)



Potential influence of red snapper fishery

Gulf-wide annual landings (1981-2015)



Sudden decreases in access to red snapper (such as the reductions in season length from 2007 to 2008 and 2013 to 2014) may cause short-term increases in targeting of other snapper species, such as gray snapper.