



**NOAA  
FISHERIES**

# Atlantic Menhaden: Stock Status, Projections, and Quota Setting

Thursday, August 14, 2025

# Outline

- Stock status
- Projections and Quota Setting

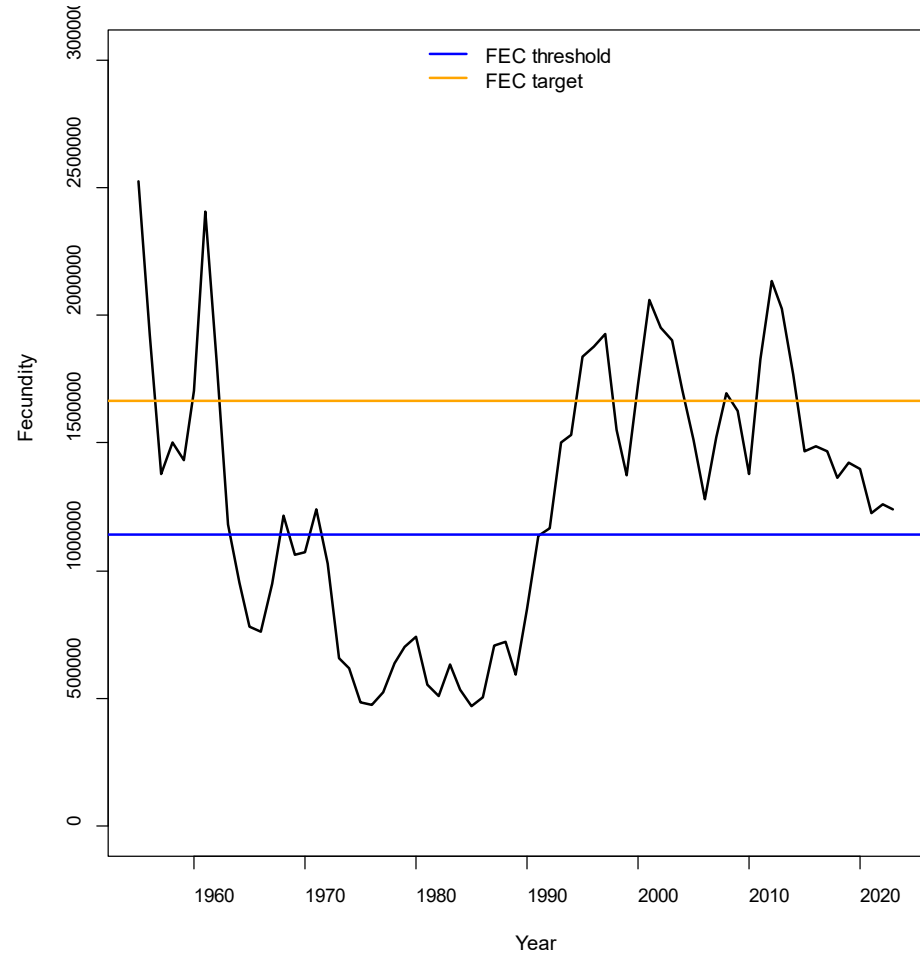
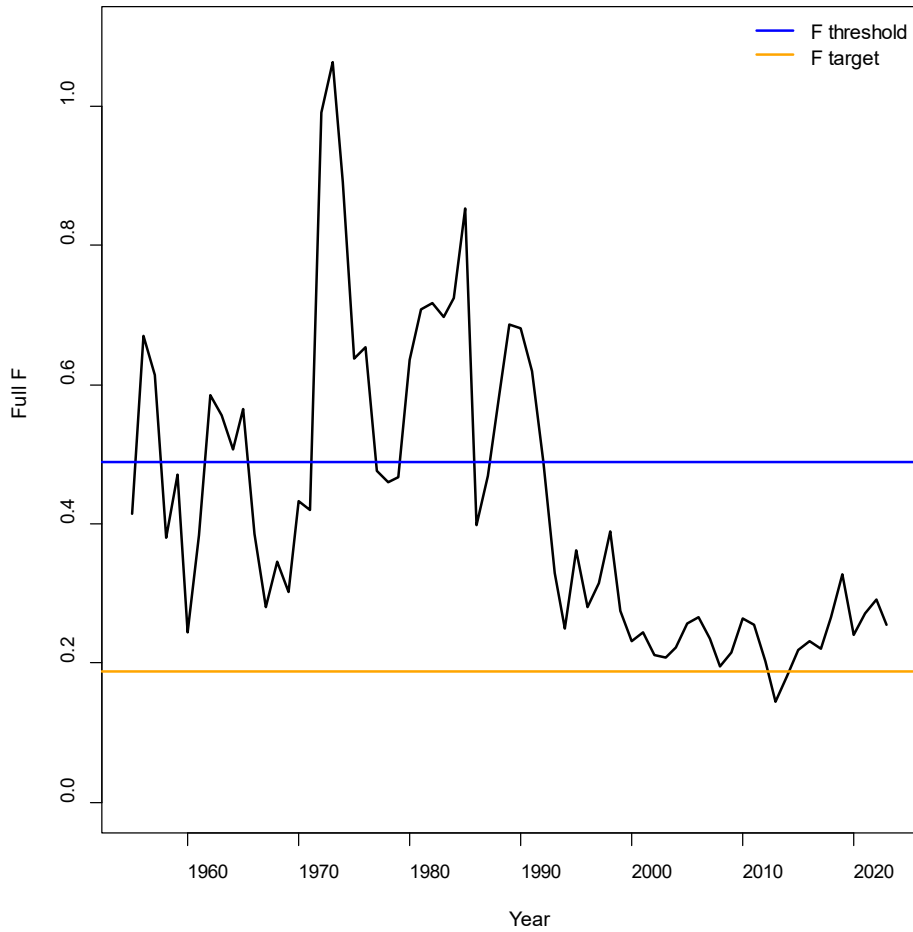
# Outline

- Stock status

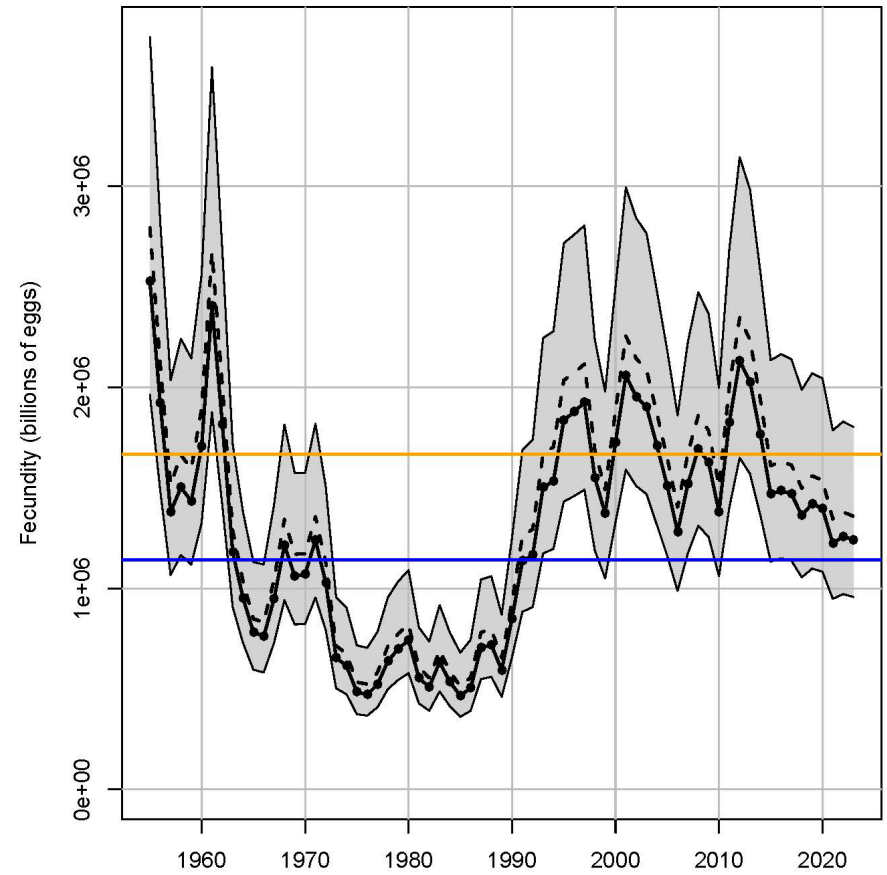
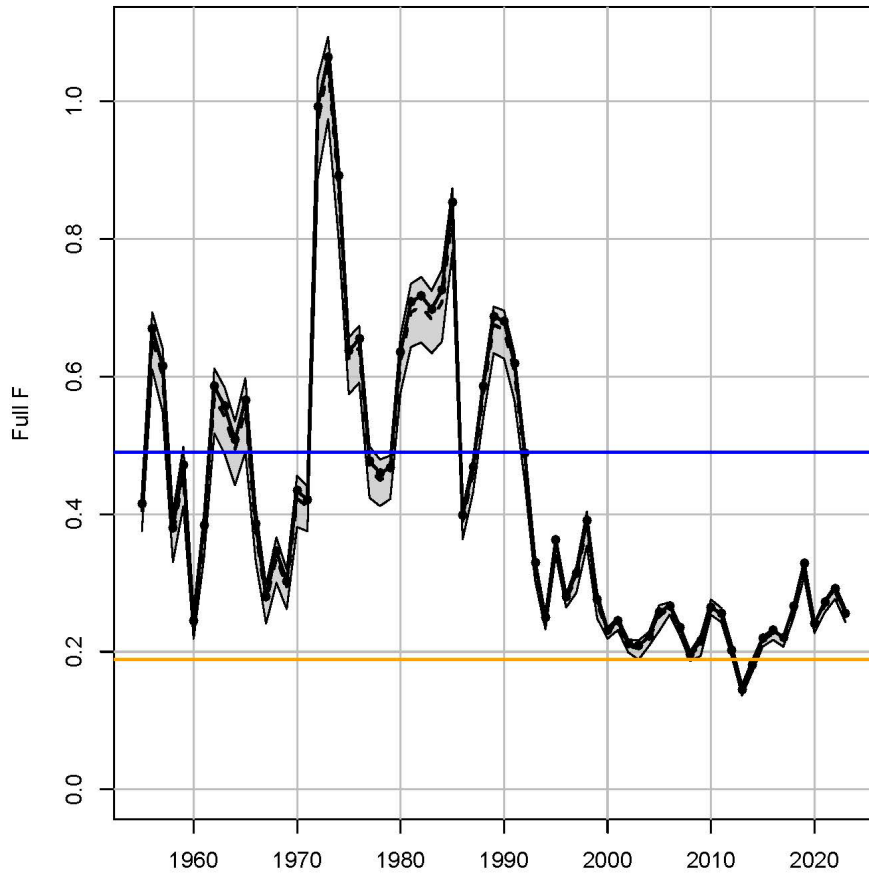
# Stock status – Proof of concept\*

Reference Point	ERP Value	2023 Value	Stock Status
$F_{\text{THRESHOLD}}$	0.490	0.26	Not Overfishing
$F_{\text{TARGET}}$	0.189		
$FEC_{\text{THRESHOLD}}$	1,142,453	1,240,272	Not Overfished
$FEC_{\text{TARGET}}$	1,666,030		

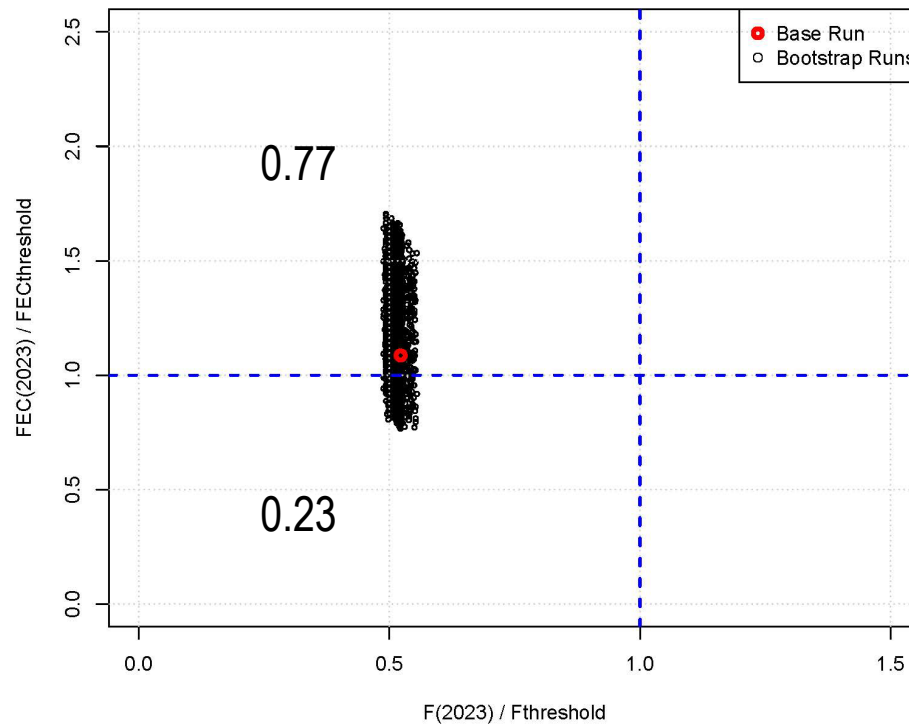
# Stock status



# Stock status



# Stock status



# Outline

- Stock status
- Projections and Quota Setting

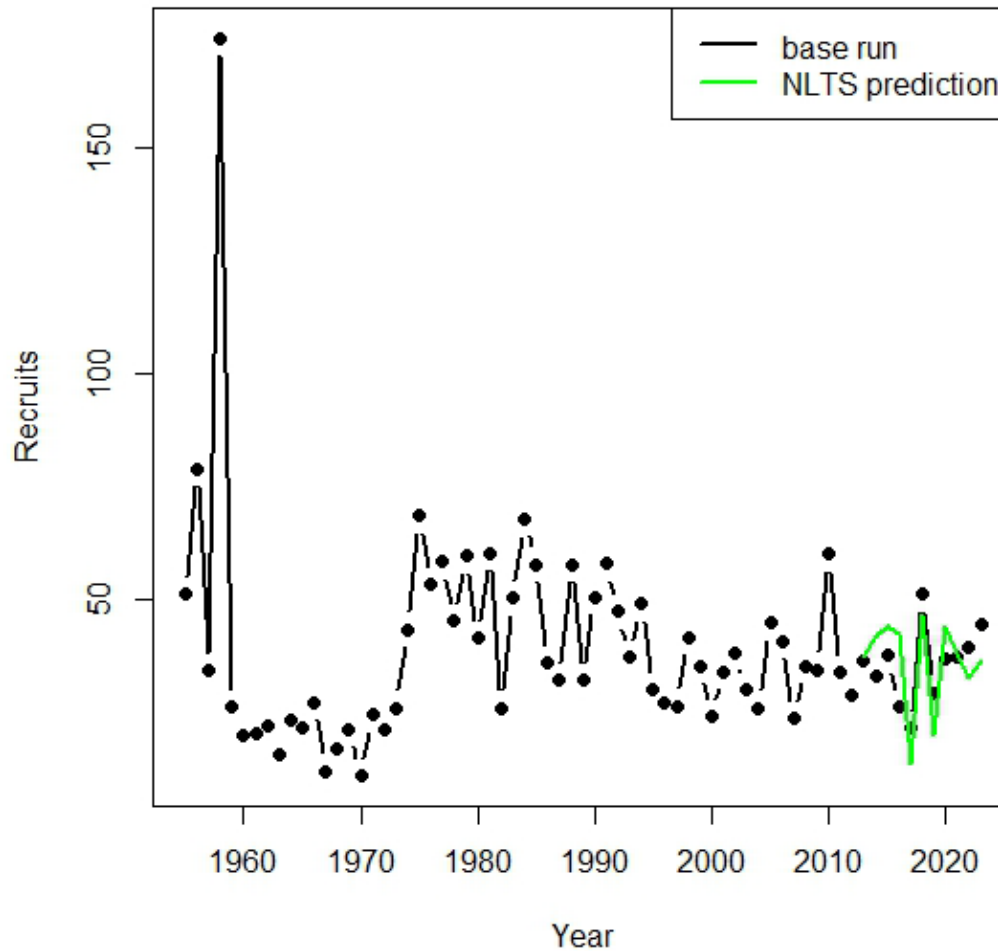
# Projection methodology

- Same as peer reviewed benchmark assessment
  - Uses MCB runs to project forward uncertainty

# Projection methodology

- Same as peer reviewed benchmark assessment
  - Uses MCB runs to project forward uncertainty
- Recruitment projected using NLTS – Empirical Dynamic Modeling

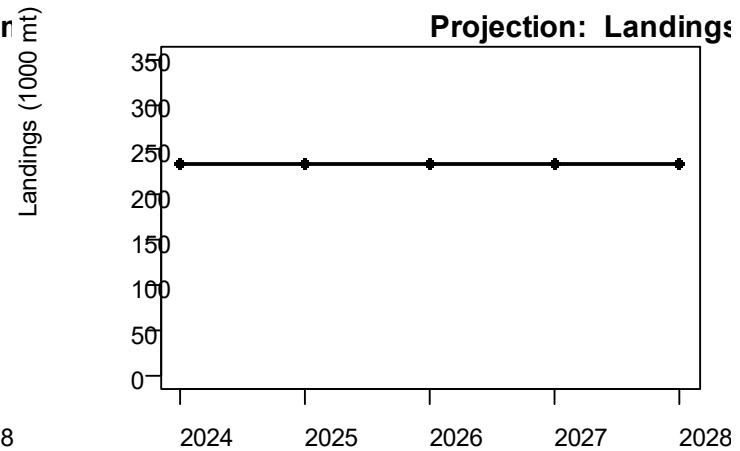
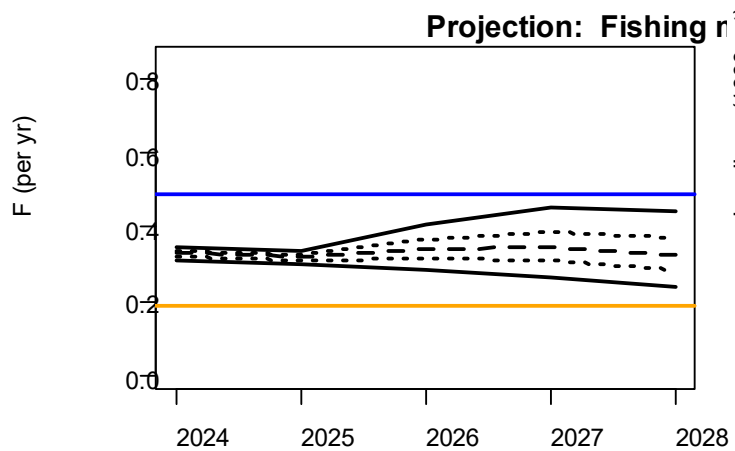
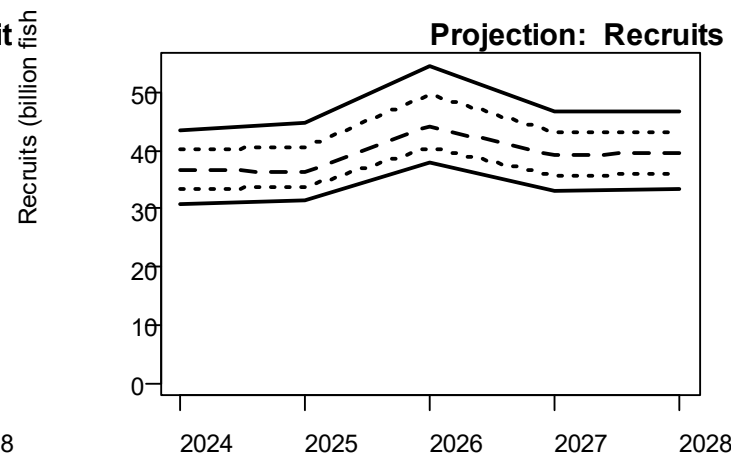
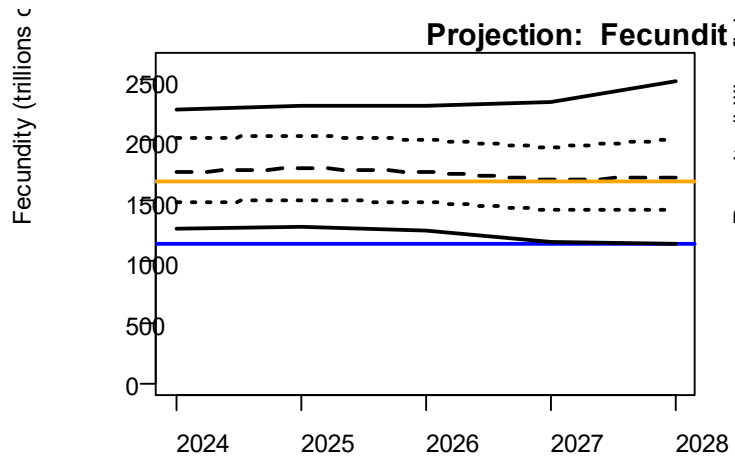
# Projection methodology



# Projection methodology

- Same as peer reviewed benchmark assessment
  - Uses MCB runs to project forward uncertainty
- Recruitment projected using NLTS – Empirical Dynamic Modeling
- TAC set at current value – 233,550 mt
  - Allocations based on current specifications
  - For 2024 - 2028

# 233,550 mt TAC



Year

Year

# Projection assumptions

- No changes in fishing effort
- Seasonality of the fishery is not modeled
- No structural model uncertainty included in the projections

# Projections and Quota Setting

- Additional projections will be run after the peer review and provided to the Board
- Quota Setting – will be done at the Board level based on projection outputs, goals and objectives, and risk tolerance