



**NOAA
FISHERIES**

SEDAR68

SEDAR 68 Scamp and Yellowmouth Grouper *Mycteroperca phenax* (and *M. interstitialis*) Gulf of Mexico and South Atlantic

Commercial Working Group

Prepared for Plenary-III

2020.09.24

Webinar



NOAA FISHERIES

Agenda

1. Review of Accepted Recommendations
2. New Recommendations

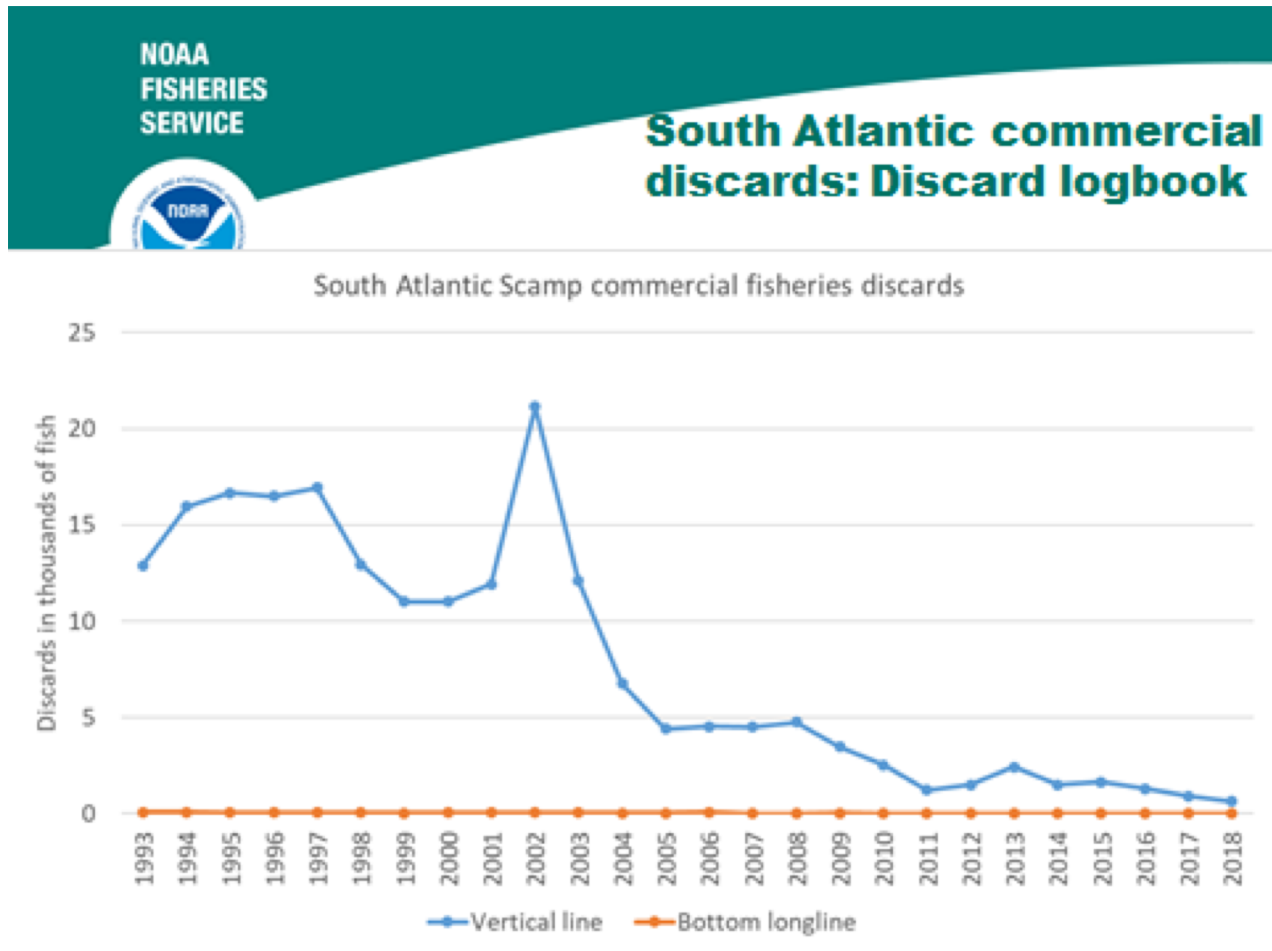
Summary of Decisions from Plenary I-II

1. **Data Sources for Commercial Landings (SAtl and GoM)**
2. **Commercial Effort (Data sources for maps)**
3. **Gear Groupings for SAtl and GoM landings**
4. **Species Identification (Scamp and Yellowmouth)**
5. **Proportioning Unclassified for the SA only**
6. **Biological data are adequate for use**
7. **Other Gear - Grouping with Handline**
8. **Commercial SA Uncertainty**

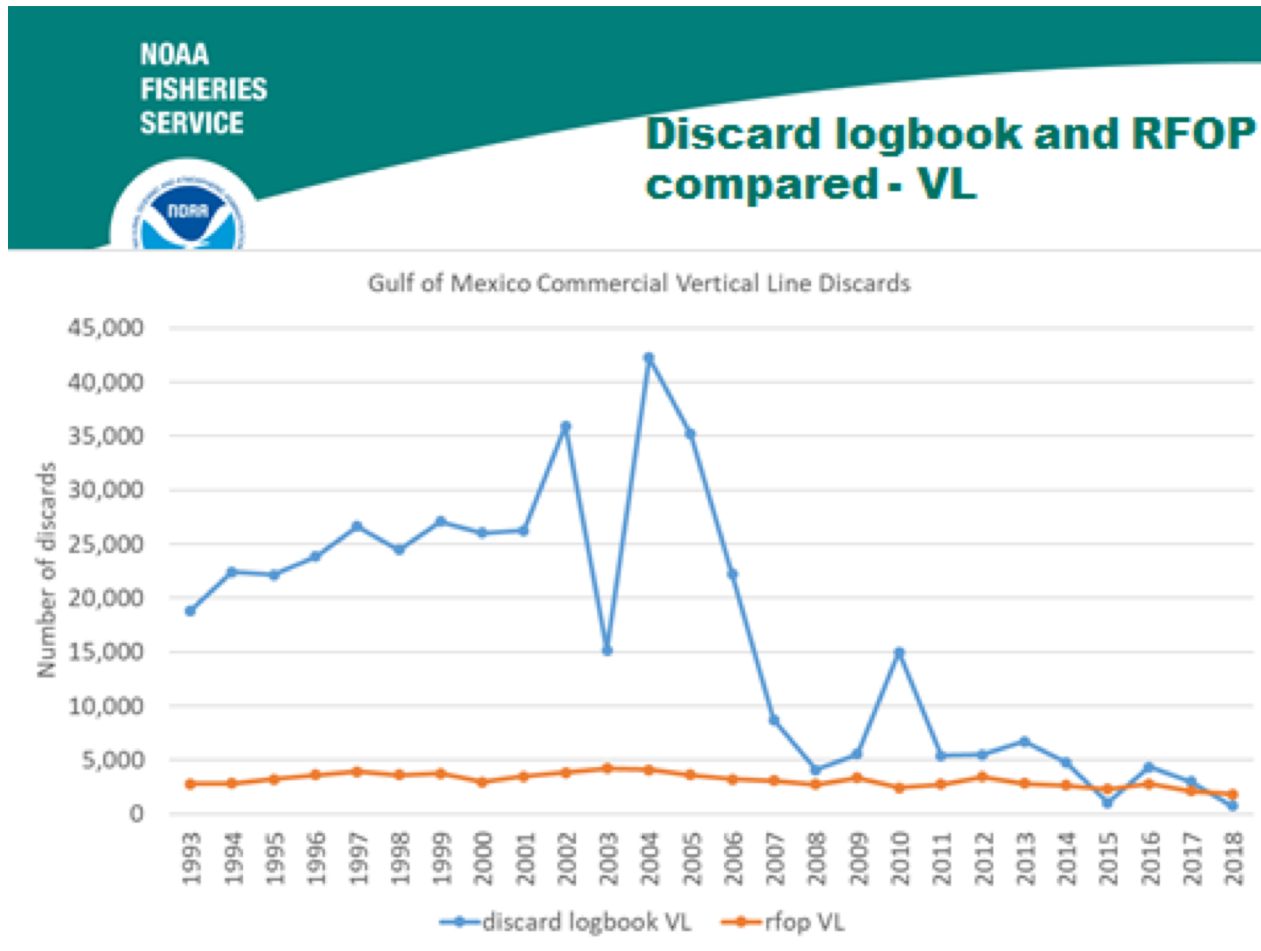
Summary of Recommendations for Plenary III

- 1. SAtl Discards Methods and Sourcing**
- 2. GoM Discards Methods and Sourcing**
- 3. GoM Proportioning of Unclassified Grouper**

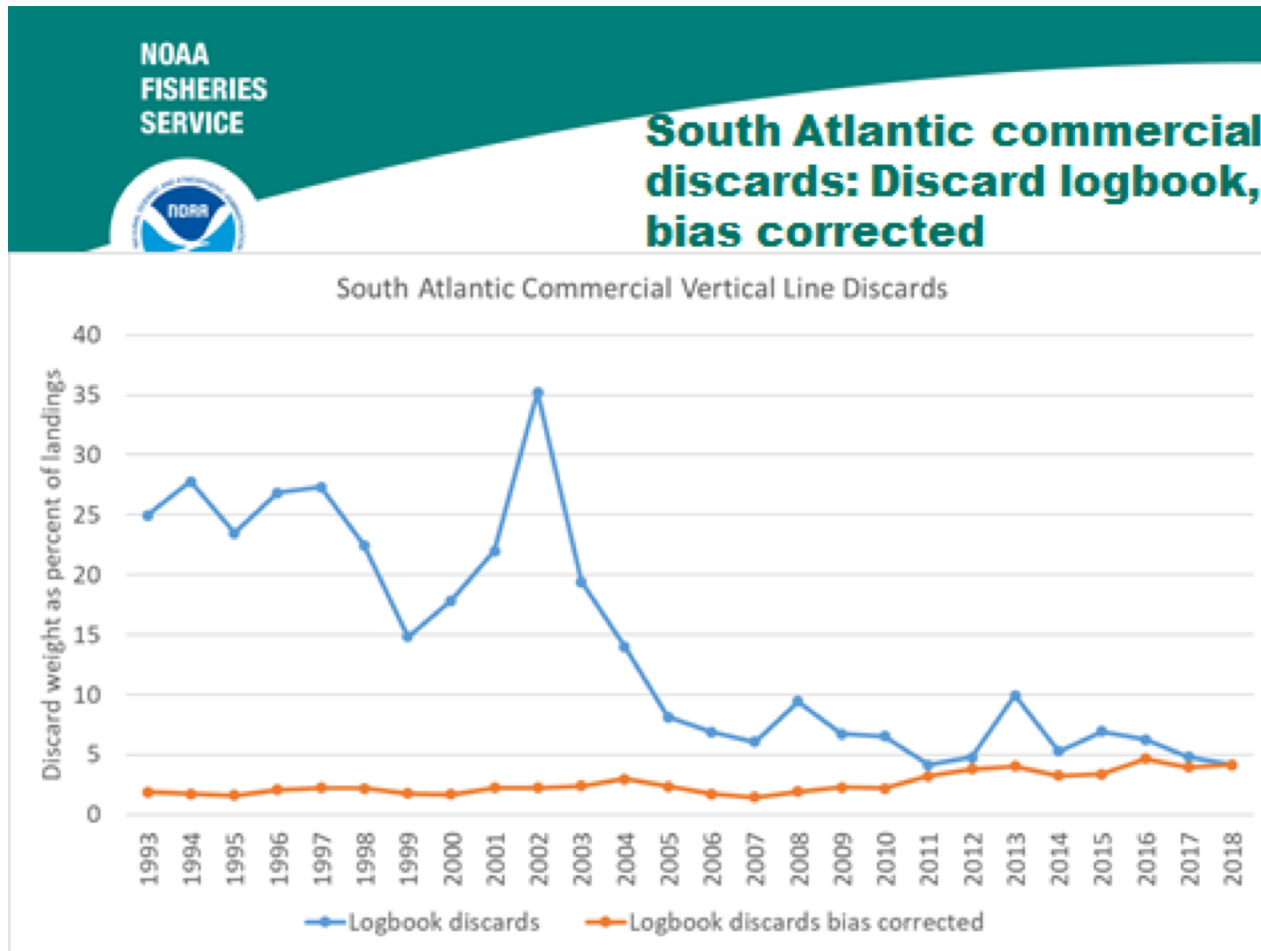
SAtl Discards



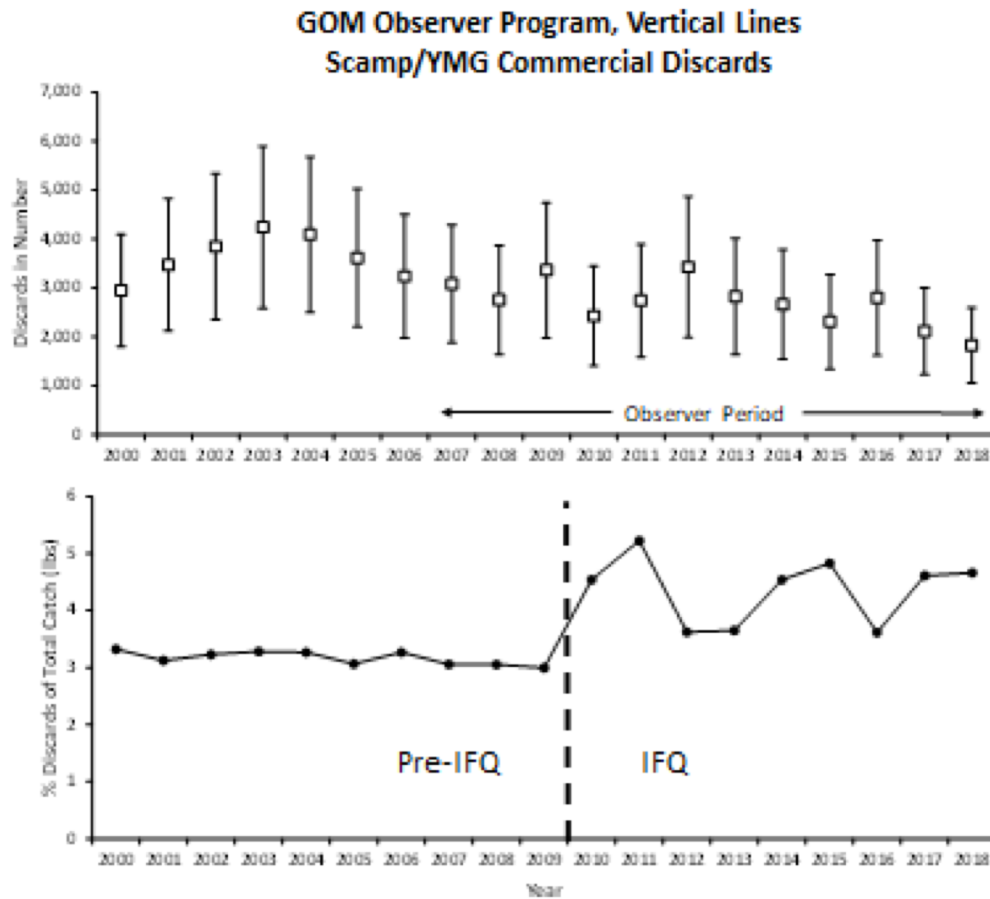
SAtl Discards



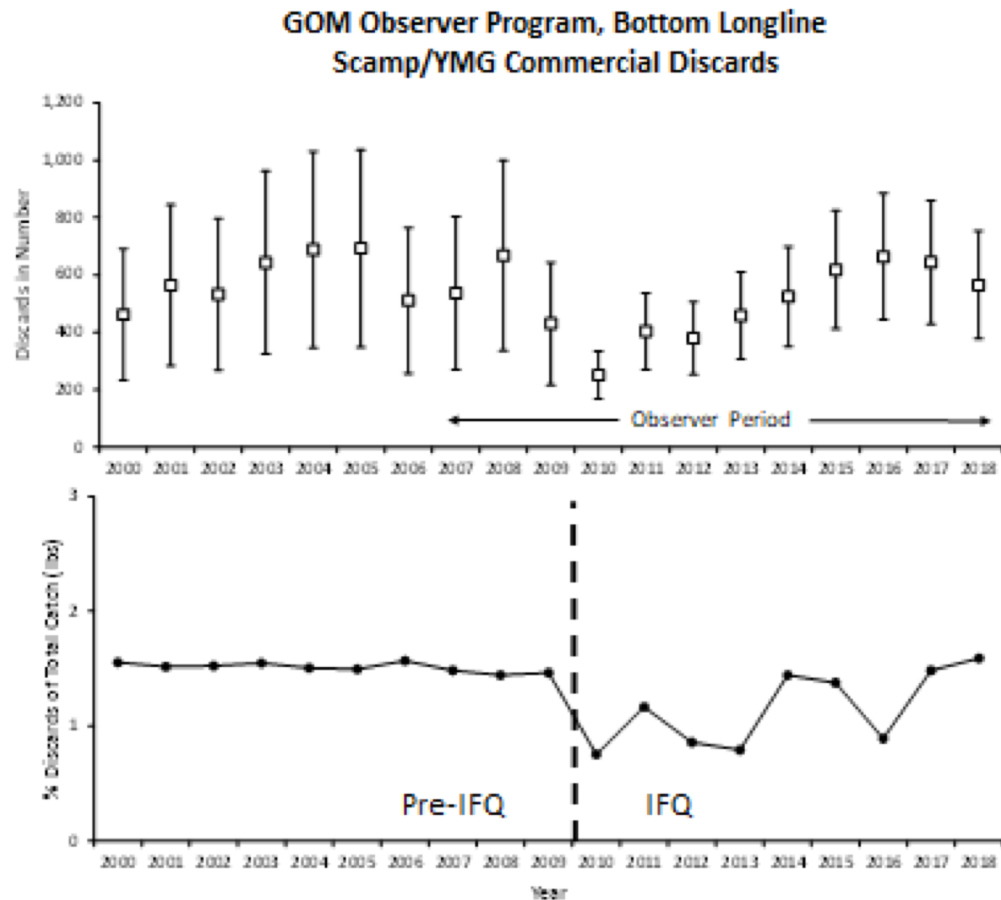
SAtl Discards



GoM Discards



GoM Discards

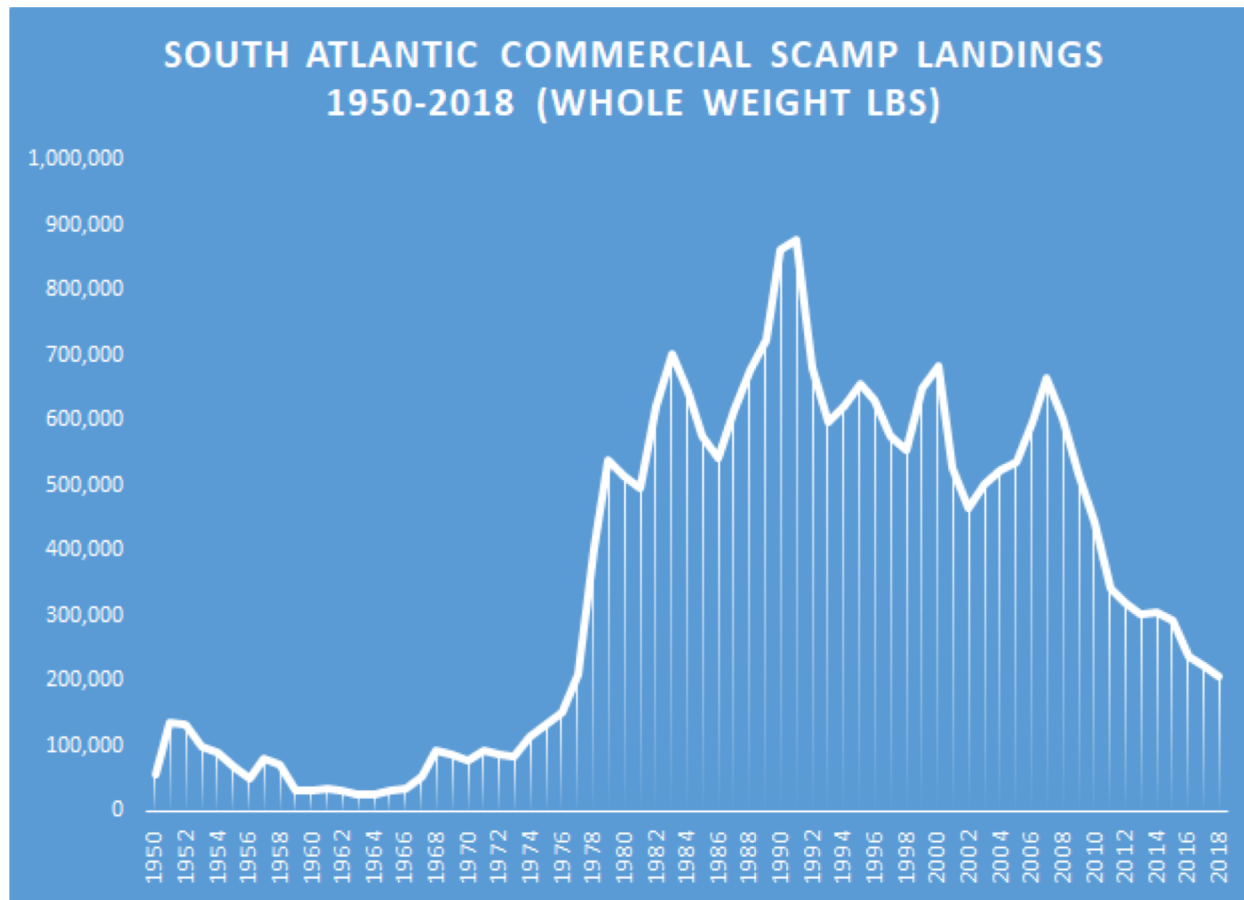


GoM Unclassified Grouper Proportioning

1. Standard methods were applied consistent with SEDAR 42 (Red Grouper) and SEDAR 10 (Gag)
 - i. TX-AL

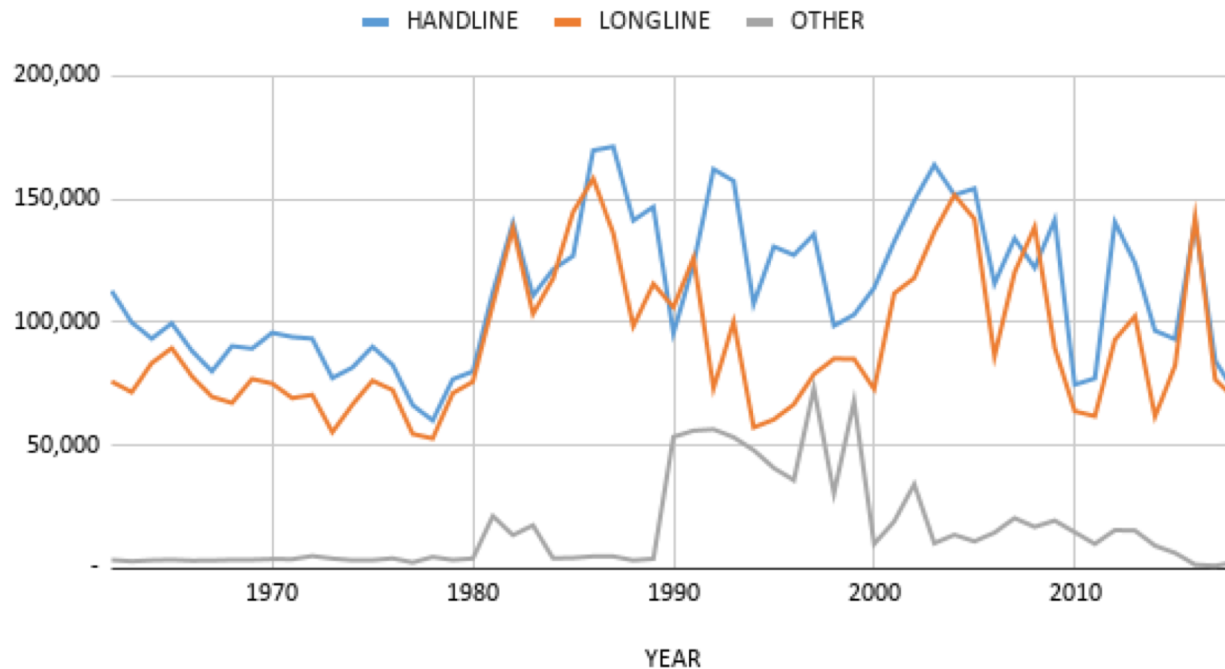
1. Proportions of Scamp to Unclassified grouper landings were calculated from 1986-1989. These proportions were applied to Unclassified grouper landings from 1962-1985.

SAt Commercial Scamp Landings 1950-2018

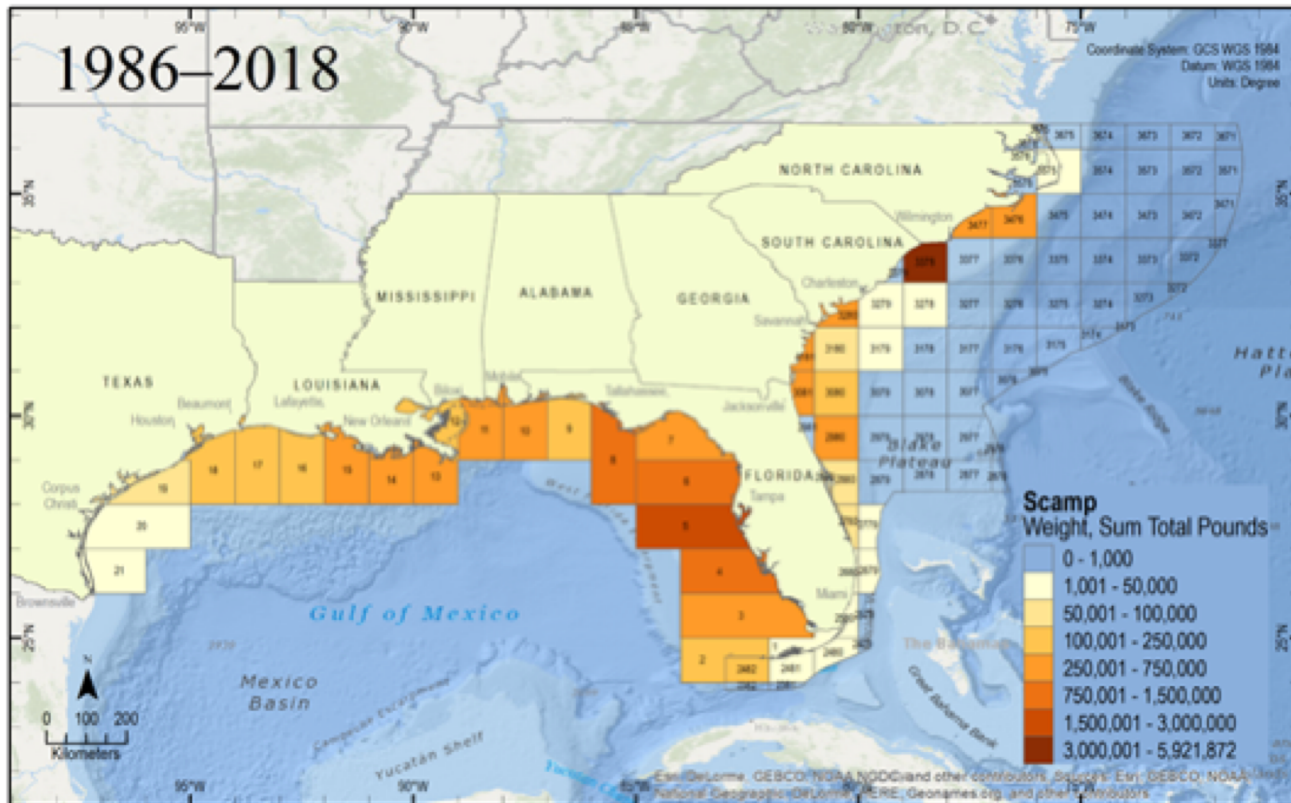


GoM Commercial Scamp Landings 1962-2018

GoM (TX-WFL) Commercial Scamp Landings 1962-2018 (Gutted)



SAt and GoM Scamp Effort (ALS)



Questions?



The following Slides are not intended to be presented

They are merely available in case there are any questions as to what we covered previously.

Beth M. Wrege

South Atlantic Discards

The workgroup is recommending Other Gears be lumped with Hand Line if needed.

- a. Question from Plenary I from Skyler S.
- b. Based on the composition of the Other Gears (primary unknown, combined, and not coded) it is the consensus of the group that the assumption can be made that these are the primary gear (hand line) used in this fishery.

APPROVED



Commercial SA Uncertainty

- **The workgroup is recommending uncertainty for the South Atlantic created using the following procedure which has been consistently used in previous SEDAR assessments.**
 - Uncertainty is determined based on the reporting methodology by state and year. This ranges from non-comprehensive annual reports through trip level reporting.
 - The group agreed, based upon expert opinion, that both an upper and lower bound be used for the period during which unclassified grouper were present in the landings.
 - The workgroup recommended that an upper bound only be set to account for underreported landings during the period when no unclassified grouper were reported.
 - The uncertainty by state will be aggregated using a weighted average and supplied as annual uncertainty.

APPROVED

Commercial SA Uncertainty

Year	NC	SC	GA	FL - Atl	Comments	South Atlantic
1950-1961	0.25	0.25	0.25	0.25	Annual state summaries, likely missed small scale dealers	weighted average
1962-1977	0.2	0.2	0.2	0.2	Annual state summaries, more inclusive General Canvas	
1978-1985	0.1	0.1	0.1	0.1	Monthly state summaries	
1986-1990	0.1	0.1	0.1	0.05	FL starts state trip ticket	
1991-1993	0.1	0.1	0.1	0.05		
1994-1995	0.05	0.1	0.1	0.05	NC starts state trip ticket	
1996-2000	0.05	0.1	0.1	0.05		
2001-2003	0.05	0.1	0.05	0.05	GA starts state trip ticket	
2004-2010	0.05	0.05	0.05	0.05	SC starts state trip ticket	
2011- present	0.05	0.05	0.05	0.05		
	indicates break between upper and lower boundary in early years to upper boundary only in later years					

APPRO

VED



NOAA FISHERIES

Data Sources for Commercial Landings

- The workgroup is recommending the following data sources, consistent with best practices (SEDAR Procedural Workshop 7)
 - GoM (ALS) R. Orhun/B. Wrege
 - Florida (Trip Ticket/Logbook) provided by S. Brown for 1986-2018 and ACCSP prior to 1986 for the State of Florida
 - ACCSP state-validated data sets provided by M. Rinaldi / J. Simpson

APPROVED

- Recommendation: Use the NMFS logbook data to proportion out South Atlantic/GoM Scamp/Yellowmouth in the trip ticket data since it is believed that fisher reported area fished data were generally more accurate than area fished data reported by dealers. Additionally, use NMFS logbook data to apportion landings by gear in the trip ticket data.

APPROVED

Commercial Effort

- Consistent with TOR, the group recommends creating map products representing commercial harvest and effort
- The workgroup discussed the maps to be created.
 - Recommendation
 - Use the harvest maps from the Stock Id Workshop
 - Create effort maps using CFLP data

APPROVED

Gear Groupings

- The workgroup discussed the primary gears used in the GoM and SAt fisheries.
- Recommendation: Commercial landings will be aggregated by the following gear types (per region):

South Atlantic

Handline
Longline
Spear/Diving
Other

Gulf of Mexico

Handline
Longline
Other

APPROVED

Species Identification

- The group recommends to remain consistent with the Stock ID workshop and feedback provided by the fishermen and treat Scamp and Yellowmouth Grouper as one unit

APPROVED



Yellowmouth Grouper



Scamp

Proportioning Unclassified for South Atlantic

Discussion

- Examined % unclassified grouper landings by year and state and the implementation of the trip ticket in each state
- Reviewed a summary of how unclassified grouper have been handled in the SAT in previous SEDARs

APPROVED

Recommendation

Years = Unclassified & Species Specific

Scamp/Yellowmouth

All Identified Grouper*

by year, gear,
and state

* With the exception of goliath and warsaw grouper

Should be applied to unclassified grouper landings by the same strata

Years back to 1950 = All unclassified

- Mean proportion of scamp by gear:
 - Florida – 1986-1991
 - Georgia – 1981-1991
 - South Carolina - 1980-1991
 - North Carolina – 1981-1991

Biological Sampling Adequacy

- There are no known inadequacies with the available TIP data
- **Recommendation: Data are adequate for use**
APPROVED