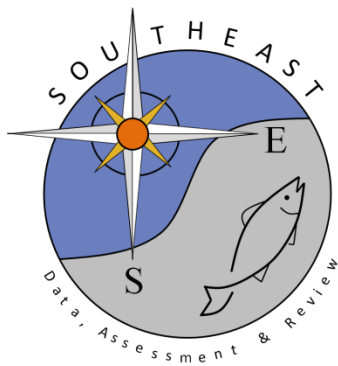


User's Guide for ASPIC Suite, version 7: A Stock-Production Model Incorporating
Covariates and auxiliary programs

Prager 2015

SEDAR41-RD74

22 December 2015



User's Guide for ASPIC Suite, version 7:
A Stock-Production Model Incorporating Covariates
and auxiliary programs



Michael H. Prager — Prager Consulting
Portland, Oregon, USA
www.mhprager.com



Last revised May 6, 2015

Preface

This guide describes Version 7 of the ASPIC Suite, a set of computer programs to fit non-equilibrium stock-production models to fisheries data. The main program is ASPIC, which does the estimation. Three utility programs are provided. The role of ASPICP is to make projections; of AGRAPH, to make simple graphs from ASPIC and ASPICP output files; of ASPIC5to7 to convert input files from ASPIC 5 to ASPIC 7 format.

The main changes in ASPIC 7 are additional estimation methods (maximum-likelihood and maximum a posteriori); revised input-file format to accommodate the new methods; and elimination of some rarely used options.

A general technical description of the theory behind ASPIC was given in [Prager \(1994\)](#). The bibliography (p. 32) has additional references, and this guide now includes a technical section (§8).

ASPIC has been used in numerous stock assessments and simulation studies. Distribution is made to fishery scientists without charge, to further fisheries research and education. As with any software, errors may be present. The author attempts to fix suspected errors promptly.

The ASPIC Suite carries no warranty of any kind. Use is entirely at your own risk.

Development of ASPIC has been supported by the U.S. National Marine Fisheries Service (NMFS) and by the author's private efforts, with additional support from the International Commission for the Conservation of Atlantic Tunas (ICCAT).

This software is distributed to interested scientists free of charge. No individual or group is authorized to charge for it or distribute it as part of any commercial product. **The author requests that this manual and [Prager \(1994\)](#) be cited in any report or published article that uses ASPIC.**

Many colleagues have given valuable technical suggestions or assistance through the years. I thank S. Cadrin, R. Deriso, K. Hiramatsu, J. Hoenig, R. Methot, C. Porch, J. Powers, A. Punt, V. Restrepo, G. Scott, K. Shertzer, J. Thorson, P. Tomlinson, D. Vaughan, E. Williams, and the many fishery scientists who have sent data sets to illustrate their ap-

plications and questions.

This user's guide is a major revision of NMFS Beaufort Lab Document BL-2004-01 (2004), itself a revision of NMFS Miami Lab Document MIA-92/93-55 (1992).

Typographical conventions

In this guide, user commands, file names, and items in input files are displayed in a monospaced font. Some **important** sections are marked by a symbol in the margin, as here; attention to such material is especially important to obtaining good results from ASPIC. Material **new** in this version of the program is marked by a different marginal symbol, as here.

Michael H. Prager, Ph.D.
Prager Consulting
Portland, Oregon, USA
May, 2014



Contents

Preface	2		
Typographical conventions	2		
Contents	3		
List of Tables	4		
List of Figures	4		
1 Introduction	5		
2 New features	5		
3 Compatibility and installation	6		
3.1 Compatibility	6		
3.2 Installation	6		
3.2.1 NMFS Toolbox version	6		
4 Overview of ASPIC	7		
4.1 Modeling flow	7		
4.2 User Interface	7		
4.3 Data requirements	7		
4.4 Program limits	7		
4.5 Program modes	7		
4.6 Several data series	9		
4.7 Choices for fitting	9		
4.7.1 Estimation methods	9		
4.7.2 Statistical conditioning	9		
4.7.3 Penalty for $B1 > K$	9		
4.7.4 Residuals and bootstrapping	9		
4.8 Input and output files	10		
4.8.1 Input file	10		
4.8.2 Output files	10		
4.9 Running ASPIC	11		
5 ASPIC 7 input file specification	12		
5.1 Data representations	12		
5.2 Line-by-line details	13		
• Prior specification	16		
6 Auxiliary Programs	19		
6.1 ASPIC5to7	19		
6.2 AGRAPH	19		
6.3 ASPICP	20		
6.3.1 ASPICP interface and use	20		
6.3.2 ASPICP control file	20		
6.3.3 Sample control file	22		
7 Tips on using the ASPIC Suite	22		
7.1 Estimation controls	22		
7.1.1 Guesses of q	22		
7.1.2 Priors and bounds	22		
7.1.3 Starting guesses in bootstraps	22		
7.2 Data issues	23		
7.2.1 Missing values and zeros	23		
7.2.2 Using several data series	23		
7.2.3 Allocating yield	23		
7.3 Estimation difficulties	25		
7.3.1 Monte Carlo search	25		
7.3.2 Issues with priors	25		
7.3.3 Sensitivity to seeds or guesses	25		
7.3.4 Estimation failure	25		
7.3.5 Reporting problems	26		
7.4 Interpretation of ASPIC Results	26		
7.4.1 Precision of estimates	26		
7.4.2 Catchability over time	27		
7.4.3 Projections	27		
8 Technical appendix	27		
8.1 Estimation methods—overview	28		
8.2 Least-squares estimation	28		
8.2.1 Data-series terms	28		
8.2.2 Penalty for $B1 > K$	28		
8.2.3 Total SSE	28		
8.3 Least absolute values estimation	29		
8.3.1 Data-series terms	29		
8.3.2 Penalty for $B1 > K$	29		
8.3.3 Total LAV	29		
8.4 Maximum-likelihood estimation	29		
8.4.1 Data-series terms	29		
8.4.2 Observation standard error	29		
8.4.3 Penalty for $B1 > K$	29		
8.4.4 Total likelihood	30		
8.5 Maximum a posteriori estimation	30		
8.6 Bootstrapping	30		
8.6.1 Overview	30		
8.6.2 Initial fit	30		
8.6.3 Residual inflation factor	30		
8.6.4 Resampling algorithm	30		
8.7 Projections in ASPICP	31		
8.7.1 Process variability in MSY	31		
9 Source code availability	31		
References	32		

List of Tables

1	Data-series types and codes	10
2	Files used by the ASPIC suite	11
-	Model shape codes	13
-	Conditioning codes	14
-	Objective function codes	14
-	Management codes for ASPICP	22
3	Missing values and zeroes	24

List of Figures

1	Modeling flow with ASPIC Suite.	8
---	---	---

1 Introduction

This guide describes Version 7 of ASPIC, a computer program to fit non-equilibrium surplus-production models to fisheries data. Three utility programs (ASPIC5to7, ASPICP, AGRAPH) are also described, whose roles are conversion of input files from ASPIC 5 format, making projections, and making basic graphs of results. Together, the programs are called the ASPIC Suite.

The surplus-production model has a long history in fishery science and has proven useful repeatedly in assessment of fish stocks (Shertzer et al. 2008). The appeal of production models is in large part their conceptual and computational simplicity. Despite that simplicity, production models incorporate an implicit recruitment function, and thus can be used for studies of sustainability. Production models have also been found especially useful in stock assessments when the age-structure of the catch cannot be estimated.

To simplify calculations, early treatments of surplus-production models assumed that the yield taken each year could be considered the equilibrium yield (e.g., Fox 1975). However that “equilibrium assumption” tends to overestimate MSY when assessing a declining stock, and it has been found problematic in several studies (Mohn 1980; Williams and Prager 2002). The simplification is no longer needed, and ASPIC does not use it.

ASPIC 7 fits the logistic production model (Schaefer 1954, 1957; Pella 1967), in which the production curve¹ is symmetrical around B_{MSY} ; the generalized model of Pella and Tomlinson (1969) as reparameterized by Fletcher (1978); and the Fox exponential yield model (Fox 1970) as an important special case of the generalized model.

ASPIC incorporates several notable features:

- Analysis of up to 12 data series, which may represent different gears or different periods of time. Data accepted include annual catches, indices of relative abundance, and estimates of absolute biomass. (See §4.6.)
- Bootstrapping to provide nonparametric confidence intervals on estimated quantities.

1. The production curve is the plot of theoretical stock production as a function of stock biomass or numbers.

- Fitting statistically conditioned on yield, fishing effort, or relative abundance.
- Four objective functions: least squares (equivalent to concentrated maximum likelihood), least absolute values, maximum likelihood, and maximum a posteriori (ML with priors).

The theory behind ASPIC and several examples were first presented in working documents of the International Commission for the Conservation of Atlantic Tunas (ICCAT) by Prager (1992a,b). Those references were superseded by the more complete treatment of Prager (1994). The model and its extensions are also described in Quinn and Deriso (1999) and Haddon (2001). The basic theory of production models is of course also described in many other texts, including Hilborn and Walters (1992), and is the subject of at least one FAO publication (Punt and Hilborn 1996).

The ASPIC computer program as described here has been used by several assessment groups and in many studies, including Prager et al. (1996), Prager and Goodyear (2001), Prager (2002), Shertzer and Prager (2002), and Williams and Prager (2002). In the course of those studies, the program has been exercised on over 100,000 sets of simulated data. The resulting experience has been used to improve the program’s reliability.

Version numbers 4 and 6 were reserved for development use. Released versions of ASPIC have included versions 1, 2, 3, 5, and 7.

Versions of ASPIC before 5.0 are no longer maintained by the author. Version 3 is still available at the author’s Web site, to allow duplicating historic analyses, but will be removed some time in 2014. Version 5 will be maintained along with version 7 for several years, then discontinued. **The author urges analysts to use the most recent version for new work.**

Updates to ASPIC will be made available at the author’s Web site, <http://www.mhprager.com> for as long as the author continues to maintain ASPIC.

2 New features

This section gives an overview of the most sig-

nificant changes introduced between ASPIC 5 and ASPIC 7.

Estimation methods. Maximum-likelihood and maximum a posteriori estimation have been added. Iteratively weighted least-squares has been removed.

Leading parameters. The user now provides starting guesses and bounds (optionally, priors) on MSY and F_{MSY} instead of MSY and K .

Input file format. The input file format has been revised and (hopefully) made more logical. A conversion program is supplied for version 5 input files.

Bounds on q . The user now supplies bounds on catchability coefficients. In earlier versions of ASPIC, bounds on q were computed heuristically by the program.

Data extents. Time series in the input file may now be up to 150 years long, increased from 100 years. The maximum number of bootstraps has been increased from 1000 to 3000.

3 Compatibility and installation

3.1 Compatibility

The ASPIC suite is compatible with personal computers running 32-bit or 64-bit versions of Microsoft Windows.² The author has tested it on Windows 7.0.

ASPIC is written in standard Fortran 95 and is portable to other operating systems. Please consult the author if you would like to use ASPIC under operating systems other than Windows. In particular, a Linux version may be available.

3.2 Installation

ASPIC is available as a self-installing executable file for Windows. The current version can be downloaded from <http://www.mhprager.com>.

The ASPIC 7 Suite can coexist with an installation of the ASPIC 5 suite, as directories and file names

2. Use of tradenames does not imply endorsement by the author or by sponsors.

are different. The only program with the same executable-file name is AGRAPH, but AGRAPH is identical in current copies of both versions.

If you keep both versions on the same computer, it is recommended to rename the shortcuts of the older version to include a version number. If you prefer, you can uninstall and reinstall the ASPIC 5 suite, and this will be done for you.

• The version 7 installer does the following:

- Installs executable files for ASPIC, ASPICP, ASPIC5to7 and AGRAPH (and support files) to a location specified by the user. The default location is the ASPIC7 subdirectory created in the Windows Program Files or Program Files (x86) tree.
- Installs this User's Guide and the ASPIC Quick Start Guide to the doc subdirectory of the program-installation location.
- Installs sample input and output files to an ASPIC7Work subdirectory of the My Documents directory belonging to the Windows All Users or Public profile.
- Adds the program location to the user's PATH specification. This allows ASPIC and related programs to be run from a command window open to any directory.
- Updates a Windows setting so that Windows always displays filenames in full³
- Adds ASPIC Suite shortcuts to the Windows Start menu and on the Desktop
- Puts an uninstaller in the installation location and adds ASPIC to the system's "Remove Programs" list

The ASPIC uninstaller removes all of the above; however, any files added by the user are not removed.

3.2.1 NMFS Toolbox version

The U.S. National Marine Fisheries Service (NMFS) has developed a "toolbox" of computer programs for stock assessment. The toolbox currently includes a graphical editor specifically for ASPIC input files and graphics that work with ASPIC output.

3. The Windows default is to suppress display of some file extensions (the part of the file name after the last "."). The default makes it difficult to run ASPIC and related programs without confusion.

It also includes many other stock-assessment and projection tools. For further information, contact the NMFS laboratory in Woods Hole, Massachusetts.

4 Overview of ASPIC

4.1 Modeling flow

The flow of files and operations when modeling with ASPIC and related programs is summarized in Fig. 1 on page 8. It may be helpful to refer to Fig. 1 as you read this manual.

4.2 User Interface

This section assumes that the user has installed ASPIC successfully with the Windows installer. The Linux version of ASPIC, when available, has a similar interface to the Windows version.

ASPIC does not include the graphical user interface that is typical of commercial software. It is a text-mode program that reads input from text files and write output to new text files. While running, it may prints informational or error messages to the console (screen). After the program completes or aborts an analysis, it must be started again to run a new analysis.

* The program is supplied in two variants, which are computationally identical. Program `aspic7.exe` runs in any standard Windows console (command window). The other variant, `aspic7g.exe`, runs in its own graphical console, which stays open so the user can scroll through any screen output. The ASPIC shortcut (icon) starts `aspic7g.exe`, which is more suited to drag-and-drop of input files.

4.3 Data requirements

Data needed by ASPIC are a series of observations on yield (catch in biomass)⁴ and one or more corresponding series of relative abundance. ASPIC assumes that the supplied abundance index is an unbiased index of the stock's abundance in biomass.

4. Production models also have been used successfully with data on removals in numbers.

Data on fishing effort rate can be used instead of relative abundance, and if so, they are assumed to represent effective (standardized) effort. This implies that effort divided by yield forms an unbiased index of the stock's relative abundance.

In this User's Guide, the terms "catch" and "yield" are used interchangeably to mean total removals in biomass. Similarly, CPUE is used to mean some index of relative abundance. The presumption is that the CPUE has been standardized before being used for modeling.

In addition to data, ASPIC requires starting guesses of its estimated parameters. The leading parameters are—

- MSY (maximum sustainable yield)
- F_{MSY} (fishing mortality rate under which MSY can be attained) *
- B_1/K (ratio of stock biomass at the beginning of the analysis to K , the carrying capacity)⁵
- For each data series, indexed by $j = 1, \dots, J$, the catchability coefficient q_j .

A full description of the input file format is given in §5 and includes suggestions for starting guesses.

The starting guess for each parameter also must include bounds (minimum and maximum values of the parameter), and in MAP estimation, the prior distribution and its parameters.

4.4 Program limits

Current programs limits are as follows:

- Years of data: 150
- Number of data series: 12
- Bootstrap trials: 3000 *
- Time steps/year in numerical integration of generalized model: 100
- Years of projection (ASPICP): 100 *

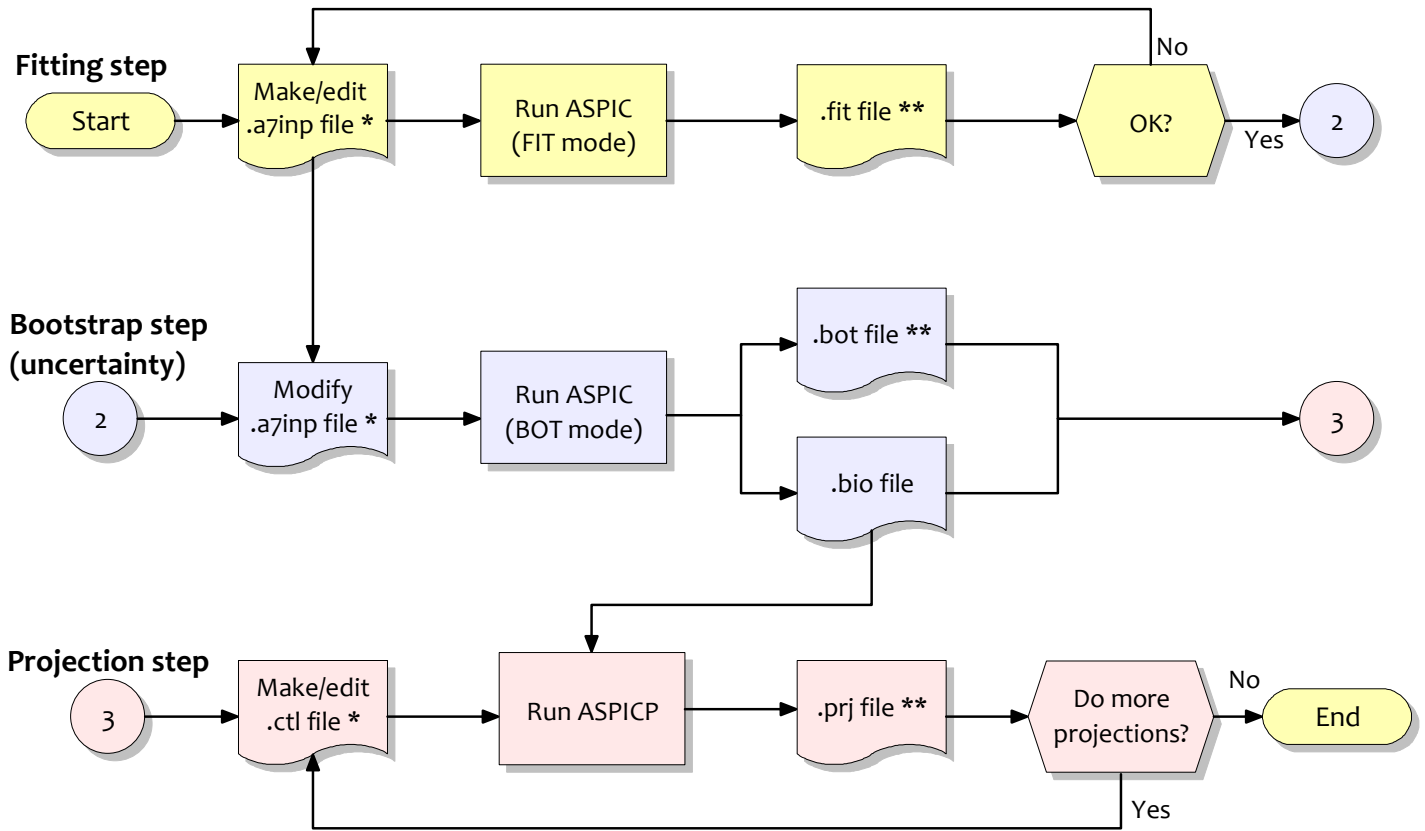
Any user with larger requirements is invited to contact the author.

4.5 Program modes

ASPIC has two modes of operation, or program modes:

5. K is equivalent to the unfished biomass.

Figure 1: Modeling flow with ASPIC Suite.



Files marked * are human viewable. Files marked ** are viewable and also graphable with AGRAPH.

- In FIT mode, ASPIC fits the model and computes estimates of parameters and other quantities of management interest, including time trajectories of fishing intensity and stock biomass. Execution time is relatively short.
- In BOT mode, ASPIC fits the model and computes bootstrapped confidence intervals on estimated quantities. Because computations are extensive, execution time in BOT mode is considerably longer than in FIT mode. For example, a bootstrap with 500 trials might take 500 times as long as a single fit.

A typical analysis begins using FIT mode, and making several runs to explore different model structures. After model and data structure have been decided—and it is established that parameter estimates can be obtained—BOT mode can be used to estimate uncertainty in results (Fig. 1).

Previous versions of ASPIC had a third program mode, for iterative reweighting of data series. That mode is no longer available.

4.6 Fitting more than one data series

ASPIC can fit data on up to 12 simultaneous or serial fisheries (biomass estimate series or biomass index series). Data series may be of several types (Table 1), but at least one series must be type CE (effort and yield) or type CC (CPUE and yield). When more than one series is analyzed, common estimates of B_1/K , MSY, and F_{MSY} are made, along with an estimate of q_j for each series. The interpretation of q_j depends on the type of data series that it describes.

A statistical weight w_j for each data series is specified by the user in the input file, and the weights are normalized by the program so that they sum to unity. The use of the weights varies slightly for the different objective functions. See §8 for details.

The computer time needed to obtain estimates generally increases as more data series are added. The increase is due to both the added data and the increased difficulty of optimization.

4.7 Choices for fitting

4.7.1 Estimation methods

ASPIC is a continuous-time, observation-error estimator that assumes observation errors are log-normally distributed. Four methods of estimation are provided: least squares, least absolute values, maximum likelihood, and maximum a posteriori. Estimation modes are described on p. 14, and technical details are given in §8.1.

4.7.2 Statistical conditioning

ASPIC can consider yield known exactly and accumulate residuals in effort or relative abundance; it can also do the reverse. Specifying this option is covered on p. 13. Whichever quantity is chosen for conditioning must be free of missing values in the input data.

Yield usually is known more precisely than effort or relative abundance; therefore, conditioning on yield is recommended for most analyses. When conditioning on yield, an iterative solution of the catch equation is used, and computation is slower than when conditioning on fishing effort.

4.7.3 Penalty for $B_1 > K$

A penalty can be added to the objective function to discourage estimates in which the first year's biomass B_1 is greater than the carrying capacity K . This penalty can affect the estimates of other parameters, so when the penalty is nonzero, results should be compared to those obtained without the penalty or by fixing the initial biomass at several plausible fractions of K . The penalty term is described in more detail in Prager (1994); its specification is described on p. 15; technical details are given in subsections of §8.

4.7.4 Residuals and bootstrapping

In bootstrap program mode, saved residuals are multiplied by an inflation factor (Stine 1990, p. 338), reported in the output file. The factor is described in §8.6.3.

A resampled data set is then generated by combining each saved predicted datum with a randomly-

Table 1: Codes for the eight types of data series allowed in ASPIC.

Code	Data type	When measured
CE	Fishing effort rate and yield	Effort rate: annual average Catch: annual total
CC	CPUE and catch	CPUE: annual average Catch: annual total
B0	Estimate of biomass	Start of year
B1	Estimate of biomass	Annual average
B2	Estimate of biomass	End of year
I0	Index of biomass	Start of year
I1	Index of biomass	Annual average
I2	Index of biomass	End of year

chosen residual. The model is then refit to the re-sampled data. The process is repeated (always using the original predicted values) up to 3,000 times.

The author recommends using at least 500 bootstrap trials to calculate the ASPIC's default 80% confidence intervals. More trials should be used for wider intervals, to ensure that the tails of the distribution are better defined.

Some bootstrap trials may produce parameter estimates at or outside the user's specified bounds. Such trials are discarded automatically and replaced by new trials. A report on discarded trials is part of the main output file.

4.8 Input and output files

All ASPIC input and output files (Table 2) are in plain ASCII format. Numerous sample files are included in the ASPIC distribution.

4.8.1 Input file

An ASPIC input file contains all data and settings required for a single ASPIC run. The simplest way to make an ASPIC input file is to copy one of the sample files and edit it with your own data and specifications. The input file format is given in full detail in §5.

A text editor⁶ is needed for editing ASPIC input files. One possibility is Windows Notepad, included with every copy of Windows. Unfortunately, Notepad is a rudimentary editor that lacks a key feature for

6. Text editors are also known as programming editors.

this work: the ability to cut and paste rectangular blocks of text (such as data columns). An excellent, free editor for general use is Notepad++, which as of May, 2014, was easily found with a Web search engine.

4.8.2 Output files

ASPIC produces several output files. Although all are written in plain ASCII, some are meant for human readability and others for use by ancillary programs. The main `.fit` and `.bot` output files, like all the files meant to be read by the user, have line lengths of 120 characters or less. Files meant for ancillary programs may have longer lines.

Names of output files are constructed from the root file name of the run's input file, with the appropriate file extension appended (Table 2). The following paragraphs summarize the types of output files generated by ASPIC:

◆ *Main output files.* The file extension of the main output file depends on program mode (Table 2). Suppose the input file is `sword.inp`. In FIT mode, the main output file will be `sword.fit`; in BOT mode, it will be `sword.bot`.

The main ASPIC output file includes parameter estimates; measures of goodness of fit; and estimates of population benchmarks, biomass levels, and exploitation levels, as well as simple character plots. Output from bootstrap runs also includes confidence intervals on many estimated quantities.

Table 2: Input (I) and output (O) files of ASPIC and related programs.

File extension	Input or output?	Used by	File contents and description
.a7inp	I	ASPIC	Input file with data, starting guesses, and run settings
.fit [‡]	O	ASPIC	Main output file from FIT program mode
.bot [‡]	O	ASPIC	Main output file from BOT program mode
.bio [†]	O, I	ASPIC, ASPICP	Estimated <i>B</i> and <i>F</i> trajectory for each bootstrap trial (BOT program mode); used by ASPICP.
.det [†]	O	ASPIC	Estimates from each bootstrap trial (BOT program mode).
.sum	O	ASPIC	Optional file with summary of all runs made in a directory
.prn	O	ASPIC	Estimated trajectories in a table easily read by a spreadsheet or statistics program
.rdat [†]	O	ASPIC	Detailed output file formatted for reading by the <code>dget()</code> function of R. Includes inputs and estimates.
.rdatb [†]	O	ASPIC	As above, but from bootstrap runs
.gen	O	ASPIC	Summary results from GENGRID mode
.ctl	I	ASPICP	Control file with projection parameters
.prj [‡]	O	ASPICP	Projection results
.prb	O	ASPICP	Supplement of <code>.bio</code> file with projection results
.rdat [†]	O	ASPICP	Detailed output file of projection, formatted for reading by the <code>dget()</code> function of R

[‡] File types readable by AGRAPH .

[†] File types intended for reading mainly by other computer programs.

◆ *Bootstrap-related files.* Two additional files are generated after bootstrap runs to allow further data analysis. The `.bio` file is used by ASPICP (described below) for projections following a bootstrap run. The `.det` file provides information on the individual bootstrap trials. It is not used directly by any supplied program, but it can be useful in further analysis.

◆ *Simple R or spreadsheet output.* A file with extension `.prn` and containing a table of time-series estimates can be output from an ASPIC run. The file is meant to be compatible with such programs as R, SAS, and spreadsheets. To enable this file, see specification of verbosity on p. 13. If you are using R for, the more complete `.rdat` file, described next, is preferred.

◆ *Detailed R-compatible output.* More complete R-compatible output is available from ASPIC runs through a file with extension `.rdat` (FIT mode) or `.rdatb` (BOT mode). Either file can be read by R

to generate a data object of type “list”, containing extensive results from the run. For example in R,

```
word <- dget("sword.rdat")
```

The section on specification of verbosity (p. 13) describes how to enable output of these files.

◆ *Summary of multiple runs.* To aid in simulation studies, a summary file (`.sum` file) can be written in the current directory. Again, the verbosity setting in the input file (p. 13) determines whether this file is written. The `.sum` file can be read by and most spreadsheets and statistics packages. It can be read with a statement like

```
mydata <- read.table("aspic.sum",
  header = TRUE)
```

4.9 Running ASPIC

First prepare an input file in the correct format (§5 on page 12). It’s easiest to copy one of the sample input files provided to use as a template.

Then start the program, giving the input file name on the command line. For example, the command

```
aspic7 sword.a7inp
```

will cause the program to read an input file named `sword.a7inp` and produce corresponding estimates and output files. If only the command

```
aspic7
```

is given, the program looks for the default input file, `aspic.a7inp`.

If the `.sum` file as been enabled, summary output from each run in the directory will be written to it. The default name is `aspic.sum`. To use a different name for the `.sum` file, give the name on the command line. For example, the command

```
aspic7 sword.a7inp mysum
```

will read the file `sword.a7inp` and create (or write to) the summary file `mysum.sum`, along with other ASPIC output.

To use drag-and-drop instead of the command line, simply drag the icon of an ASPIC 7 input file (extension `.a7inp`) to the shortcut for ASPIC 7 created by the installer.⁷ The ASPIC Quick Reference, installed with the ASPIC Suite, includes more information on drag-and-drop use.

Severe errors detected while ASPIC is reading the input file will cause the program to print a descriptive message and stop. If the message is not clear, comparing the input file to the samples provided may reveal format errors.

5 ASPIC 7 input file specification

ASPIC 7 takes its input from a single file containing control parameters and data. The format of that file is described in this section.

- * The input file format has changed. The utility program ASPIC5to7 (§6.1) can be used to convert ASPIC 5 input files to the new format.

5.1 Data representations

Data in the input file must be represented in specific ways.

- *
 - Any line *after line 1* can be a comment. A

comment must have the hash character (`#`) in column 1. Comments are ignored by the program.

- Data values are not required to be in specific columns of the line. If a line contains more than one value, however, they must be in the correct order.
- Values on a line should be separated by spaces (blanks). **Using tab characters to separate values is not guaranteed to work.**

The remaining format rules depend upon the type of the data item (integer, real, or character).

- Each *real number* must contain a decimal point, an exponent (denoted by the letter `d` or `e`), or both a decimal point and an exponent. Examples: `1.0`, `2e3`, `1.3d6`. (Note that `2e3` means 2×10^3 .) An integer may be used in place of a whole real number.
- *Integers* must not contain decimal points or exponents. Examples: `0`, `2`, `94541`. The value `1.0` is not valid when an integer is required
- *Character strings* may be quoted, i.e., enclosed in matched apostrophes or quotation marks. Quoting is optional unless the string contains blanks or other special characters. Here are three examples of valid character strings:

```
FallIndex
```

```
'This is a valid string'
```

```
"Another valid string"
```

- Each line must have the specified number of values, separated by spaces. Values may not be otherwise arranged among lines.
- After all required values have been read from a line, the program does not read further. Thus, the rest of the line may be used as a comment. End-of-line comments in sample input files are sometimes preceded by hash characters, `##`. The hash characters are used to make the comments stand out and are not required before end-of-line comments.
- After all data have been read from the file, as determined by the number of years of data and number of data series, any further contents of the file are ignored by ASPIC. Thus, additional comments may be placed at the end of the file.

7. The shortcut points to `aspic7g.exe`.

5.2 Line-by-line details

Here, each line of the input file is explained in detail. Comments may appear almost anywhere, so line numbers given here *exclude* comments inserted by the user.

Line 1: Version indicator

Each ASPIC 7 input file must contain the following ID string on line 1:

```
ASPIC-V7
```

- Comments are not allowed before the ID string.

Line 2: Run title

The run title is a character string of up to 110 characters. This title is written to the main output file to identify the analysis. It will also appear on graphs made with AGRAPH and projections made with ASPICP.

Since the run title typically contains spaces, it should be quoted. For example:

```
"Run 4 for Swordfish, 1994"
```

Line 3: Program mode, verbosity, & bootstrap

Line 3 contains up to four values controlling basic features of the program's execution.

- ❶ The first value on line 3 is the program mode, a character string of length 3. Possible values are FIT (fitting mode) or BOT (bootstrap mode). Program modes were described in §4.5 on page 7.

- ❷ The second value on line 3 is the verbosity, an integer controlling the amount of screen output during the run. It also controls whether optional `.sum`, `.prn`, and `.rdat` files (§4.8) are generated.

Screen output is controlled by setting verbosity between 0 and 4. Using 0 gives almost no screen output; 2, moderate output; and 4, extensive output meant for debugging the program. The recommended default is 2.

To generate `.sum` and `.prn` files, add 10 to the verbosity. For example, verbosity of 12 generates those files and gives moderate screen output.

To generate an R-compatible `.rdat` file, add 100 to the verbosity. For example, 112 generates all optional files and moderate screen output. Verbosity of 102 generates an `.rdat` file and moderate screen output.

To avoid the usual prompt when an output file is about to be overwritten, use verbosity of 0 or change the sign of a positive verbosity. In that case, ASPIC will overwrite an output file without asking, which can be useful when ASPIC is run by a script or another program.

- ❸ The third value on line 3 is the number of bootstraps, an integer up to 3000. In FIT mode, this value may be omitted. If present, it is ignored.

- ❹ The fourth value on line 3 is an optional integer $30 \leq n_2 \leq 95$, used to set the width of confidence intervals (CIs) in bootstrap mode. ASPIC provides two sets of confidence intervals: The first are always 80% confidence intervals, and the second are 50% intervals by default, e.g., when n_2 is omitted. To replace 50% CIs with 75% CIs (for example), set n_2 to 75. Wider intervals require more bootstrap trials to compute precisely. The author suggests that when $n_2 > 80$, the number of bootstrap trials be between 1000 and 3000.

Line 4: Model shape, conditioning, & estimation mode

Line 4 has three specifications controlling model form and fitting.

- ❶ The first value on line 4 is a character string specifying model shape.

Value	Meaning
LOGISTIC	Fit the logistic (Schaefer) model.
GENGRID	Fit the generalized (Pella-Tomlinson) model at a grid of values
FOX	Fit the Fox model (a special case of GENFIT, below).
GENFIT	Fit the generalized model and estimate its exponent directly.

- ❷ The second value on line 4 is a character string specifying statistical conditioning in estimation. For more information, see §4.7.2.

Value	Meaning
YLD	Condition on yield (recommended for most analyses).
EFT	Condition on fishing effort rate

③ The third value on line 4 is a character string specifying the estimation method.

Value	Estimation method
SSE	Least squares
LAV	Least absolute values
MLE	Maximum likelihood
MAP	Maximum a posteriori—a form of penalized likelihood using Bayesian priors.

The first two estimation methods were available in ASPIC 5; the last two are new in ASPIC 7. Annual CVs on observations can be accommodated by MLE and MAP estimation.

Line 5: Data extents

Line 5 holds two integer values.

- ① The first value on line 5 is an integer specifying the length of (number of years in) each data series. The maximum value is 150.
- ② The second value on line 5 is an integer specifying the number of data series in the file. The maximum value is 12.

Line 6: Monte Carlo searching

This line contains two integers to control the optional Monte Carlo (MC) search during fitting.

- ① The first value on line 6 sets the MC search mode (intensity). The value may be 0 to disable Monte Carlo searching; 1 to enable basic MC searching; or 2 for repeated searching.
- ② The second value on line 6 sets the number of Monte Carlo trials. When repeated searching (mode 2) is selected, the number of trials in searches after the first is reduced by 1/3. A value is required, even when Monte Carlo intensity is 0.

Comments: Search modes 1 and 2 can be helpful when a repeatable solution is otherwise difficult to find. Unfortunately, when strong local minima are

present, a MC search occasionally leads to one of them. Thus, it can be better to use MC searching as needed, rather than routinely. When needed, a reasonable pair of MC settings is 1 100000. The number of trials would be increased or decreased, depending on the difficulty of the problem and the speed of the computer.

Monte Carlo searching can increase execution time considerably, especially when repeated searching is enabled during a bootstrap. For that reason, increasing the number of searches may be more useful than using mode 2 in a bootstrap run.

Line 7: Convergence criteria

Line 7 holds three real numbers controlling convergence in optimization. The suggested values have been chosen through much experience. Users are not encouraged to change them without reason. In cases where a fit is difficult to obtain, it might be helpful to reduce them each by one power of ten.

① The first number, ε_1 , is the convergence tolerance of the Nelder-Mead optimizer among its several trial parameter vectors. After each adjustment, the objective function is computed for each set of trial values. Convergence is defined to occur when the following condition is met:

$$\frac{2|\mathcal{O}_\alpha - \mathcal{O}_\omega|}{\mathcal{O}_\alpha + \mathcal{O}_\omega} < \varepsilon_1.$$

where \mathcal{O}_α is the best objective-function value in the polytope and \mathcal{O}_ω is the worst.

The recommended value is $\varepsilon_1 = 1 \times 10^{-8}$, which is written as 1d-8 in the input file. Changing this value is not recommended.

② The second number is ε_2 , the convergence tolerance of randomized restarts, which are used by ASPIC to escape local minima. When objective function values from k consecutive starts agree within this tolerance, the solution is accepted. (The value of k is set on the following line.) The recommended value is $\varepsilon_2 = 3 \times 10^{-8}$, which is written as 3d-8 in the input file. Changing this value is not recommended.

③ The third value is the convergence tolerance ε_3 in computing fishing mortality when conditioning on yield. The approximation stops when successive

estimates of F are within ε_3 . The recommended value is $\varepsilon_3 = 1 \times 10^{-4}$, which is written as 1.0d-4 in the input file.

In EFT conditioning mode, the value of ε_3 is not used, but a value must be present nonetheless.

Line 8: Computational parameters

Line 8 holds three additional values controlling computation and fitting.

❶ The first value on line 8 is F_∞ , a real number specifying maximum estimated F when conditioning on yield. The recommended default, 8.0d0, works well in many cases. This value is used to guide the optimizer, and reducing the value may cause estimation problems.

☛ If F_∞ is less than the maximum bound set on F_{MSY} below, it acts as a more restrictive maximum bound on F_{MSY} . In other words, F_∞ can override the user's maximum on F_{MSY} .

❷ The second value on line 8 is the integer k , the number of consecutive restarts required for accepting parameter estimates. The recommended default is 8. A larger k should be used when there are more than 2 data series or when reaching a good answer seems difficult. In rare cases where fitting is extremely difficult, a much larger number (say, 64) could be tried.

❸ The third value on line 8 is integer n , the number of time steps per year in approximating the generalized production model. Allowable values are between 2 and 100; suggested values are between 6 and 24. Larger n causes slower execution.

☛ When fitting the logistic model, a value of n need not be present. If present, it is ignored.

Line 9: Random number seed

Line 9 holds one value, a seed for initializing the random-number generator. This should be a large (7-digit) positive integer. Different seeds result in different random number sequences; using the same seed allows duplicating a previous run.⁸

8. See §7.3 for advice on estimation sensitivity to choice of seed.

Line 10: Initialization of B_1/K

Line 10 is the first of several lines with values that control estimation of the model's parameters. This line controls the ratio B_1/K , where B_1 is the biomass at the start of the first year, and K is the carrying capacity.

❶ Line 10 must start with the character string B1K.

❷ The second value on line 10 is a starting guess for B_1/K , typically a real number between zero and one. Ideally, this is based on knowledge of the stock's condition at the start of the data set. Absent such information, a reasonable default is 0.5.

❸ The third value on line 10 is the estimation flag, an integer: 1 to estimate B_1/K , or 0 to use the starting guess as a fixed value.

☛ If the estimation flag is 0, no further values are required on this line. If present, they are ignored. When the estimation flag is 1, additional values are required—

❹–❺ The fourth and fifth values on line 10 are two real numbers: lower and upper bounds on the estimate of B_1/K . Only values within those bounds will be examined by the optimizer in point estimation and in bootstrapping.

☛ The following values on this line differ, depending on whether MAP estimation is being used. ✓

With other than MAP estimation—

When using estimation methods SSE, LAV, or MLE, the remaining values on line 10 specify a penalty added to the objective function when $\hat{B}_1/\hat{K} > 1$.

❻ The sixth value on the line is the character string penalty.

❼ The seventh value is a real number, the statistical weight of the penalty term. For no penalty, enter 0.0. To use a penalty, enter a positive real number, typically 1.0.

The penalty is useful in analyses showing a sharp decline in abundance in the initial years; such patterns can otherwise result in an extremely high estimate of B_1 .

The recommended default is 0.0 (no penalty). If the resulting estimate of B_1/K is too high, the analyst can try either a nonzero penalty or fixing

B_1/K rather than estimating it. Either approach can affect estimates of management quantities; sensitivity analyses are useful to examine this.

The penalty term is described in [Prager \(1994\)](#); fixing B_1 , in [Punt \(1990\)](#). Mathematical details of the penalty’s application in ASPIC 7 are given in §8.2.2 and sections following it.

With MAP estimation (prior specification)—



When using MAP, the remaining values on this line specify the prior distribution for B_1/K .

- ⑥ The sixth value is the character string prior.
- ⑦ The seventh value is a character string giving the name of the prior distribution. This may be `uniform`, `normal`, `lognormal`, `triangular`, or `beta`.
- ⑧ The eighth and following values are real numbers giving parameters of the chosen prior distribution—

- For the uniform distribution, two values: lower bound and upper bound.
- For the normal distribution, two values: the mean and coefficient of variation, $cv = \sigma/\mu$, where σ is the standard deviation and μ the mean.
- For the lognormal distribution, two values: the distribution’s mode and the standard deviation of the logged distribution. (The second parameter is approximately equal to the c. v. of the distribution.)
- For the triangular distribution, three values: the lower bound, the value at peak probability density, and the upper bound.
- For the beta distribution, four values: shape parameters α and β , then lower and upper bounds. (The standard beta distribution is supported on $[0, 1]$. Here, it is scaled to the range between the user’s lower and upper bounds.)

For more information on possible shapes of the beta distribution, the user might consult a text on statistical distributions, or even the relevant [Wikipedia page](#), in particular, the section titled

“Geometry of the probability distribution function.”)

Examples of line 10

■ B_1/K fixed at starting value of 0.75:

```
B1K 0.75 0
```

■ Other than MAP estimation; penalty enabled:

```
B1K 0.9 1 0.1 5.0 penalty 1.0
```

■ Other than MAP estimation, penalty disabled:

```
B1K 0.5 1 0.1 5.0 penalty 0.0
```

■ MAP estimation with uniform prior:

```
B1K 0.9 1 0.2 1.5 prior uniform 0.2 1.5
```

■ MAP estimation with beta prior:

```
B1K 0.5 1 0.1 2.0 prior beta 2.0 2.0 0.1 2.0
```

Line 11: Initialization of MSY

Line 11 controls estimation of MSY.

- ① The first value on line 11 is character string MSY.
- ② The second number is a real number, the user’s starting guess of MSY. In the absence of other information, 80% of the largest observed yield can be a reasonable default. See also §7.1 on page 22.
- ③ The third number is the integer estimation flag: 1 to estimate MSY or 0 to use the starting guess as a fixed value.
 - ☛ If the estimation flag is 0, no further values are required, and if present, they are ignored. When the estimation flag is 1, additional values are required—
- ④–⑤ Two real numbers: lower and upper bounds on MSY.
 - ☛ Further values are required only when using MAP estimation.
- ⑥+ The character string prior; the name of the prior distribution on MSY; and two to four real numbers, parameters of the distribution. [See text on initialization of B_1/K (p. 16) for a more detailed description of specifying prior distributions.]
 - ☛ ASPIC includes logic that prevents MSY from exceeding the carrying capacity K . If your analysis requires $MSY > K$, you can divide your annual input

data into two or more periods per year, and MSY on a per-period basis will be reduced accordingly. Population parameter K does not have time units and would be unaffected.

Examples of line 11

■ When not using MAP optimization:

```
MSY 1.2d3 1 400.0 1d4
```

or

```
MSY 1.2d3 0
```

■ When using MAP optimization:

```
MSY 1d3 1 1d2 1d4 prior lognormal 1d3 0.2
```

Line 12: Initialization of F_{MSY}

Line 12 controls estimation of F_{MSY} , using the same format as the preceding line.

- ❶ The character string `FMSY`.
- ❷ A real number, the starting guess for F_{MSY} .
- ❸ The integer (estimation flag) 1 to estimate F_{MSY} or 0 to use the starting guess as a fixed value.
 - ☛ If the estimation flag is 0, no further entries are required on this line. If present, they are ignored.
- ❹–❺ Two real numbers: lower and upper bounds on F_{MSY} .
 - ☛ Further entries are required on this line only when using MAP estimation.
- ❻+ The character string `prior`; the name of the prior distribution on F_{MSY} ; and two to four real numbers, parameters of the prior distribution. See text on initialization of B_1/K (p. 16) for details on specification of priors.

Lines 13 and following: Initialization of q

The next lines control estimation of the catchability coefficients q_j , where $j = \{1, 2, \dots, J\}$ denotes the data series. One line is required for each data series in the input file, in the same order that the data series appear in the file.

In data series of types B0, B1, and B2, $q = 1$ by definition, and thus most data on the line will be

ignored. Nonetheless, a properly formatted line for each of the J data series is required.

Each line is similar to preceding lines:

- ❶ The character `q`.
- ❷ A real number, the starting guess for q_j .
- ❸ The integer 1 to estimate q_j , or 0 to use the starting guess as a fixed value.
- ❹ A real number: statistical weight of this series in the objective function. Suggested default is 1.0. (Use of these weights is described in §8.)
 - ☛ If the estimation flag is 0, no further entries are required on this line. If present, they are ignored.
- ❺–❻ Two real numbers giving lower and upper bounds on q_j .
- ❼... When using MAP optimization and estimating q_j , the prior specification: The character string `prior`; the name of the prior distribution on q_j ; and two to four real numbers, parameters of that distribution. See text on initialization of B_1/K (p. 16) for details on specifying priors.

Examples of q specification lines

■ For a biomass series (B0, B1, or B2):

```
q 1.0 0 1.0
```

■ When not using MAP optimization:

```
q 0.1 1 1.0 0.02 0.9
```

■ When using MAP optimization:

```
q 0.1 1 1.0 0.02 0.9 prior normal 0.1 0.5
```

Next line: Initialization of model shape ϕ

The next line controls estimation of the shape parameter in the generalized model. In ASPIC, shape is represented by $\phi = B_{MSY}/K$, a fraction in (0, 1).

- ☛ This line is needed only when model shape choice on line 4 is GENGRID or GENFIT. A line beginning with the required string POS will be ignored if another model shape is specified.
- ☛ Some contents of this line vary by model shape specification.

◆ If using GENFIT model shape:

- ❶ The character string POS or pos.
- ❷ An integer, the starting guess for $100 \cdot \phi$. (For example, if the guess for ϕ is 0.4, enter 40 here.)
- ❸ An integer, 1 to estimate ϕ or 0 to use the starting guess as a fixed value.
- ☛ If the estimation flag is 0, no further entries are required on this line.
- ❹-❺ Two integers: lower and upper bounds on $100 \cdot \phi$.
- ❻ A real number ξ to bound the generalized estimates with respect to the logistic estimates.⁹ For example, 8.0 means that MSY for the generalized fit will be bounded between 1/8 of and 8 times MSY estimated by the logistic fit and that F_{MSY} will be bounded similarly. A change is made only if it results in a stricter bound than the explicit bound set by the user.

In a bootstrap run, bounds changes are in effect only for the initial fit of the generalized model. In bootstrap trials, the user's bounds are restored.

If the user specifies $\xi = 0.0$, no bounds changes are made. When $\xi > 0$, ASPIC requires that $\xi \geq 3.0$. In studies so far, $\xi = 8.0$ has worked well.

❼... When using MAP optimization and estimating ϕ , the prior specification: The character string prior; the name of the prior distribution on ϕ ; and two to four real numbers, parameters of that distribution. See text on initialization of B_1/K (p. 16) for details on specifying priors. *Prior parameters on ϕ are given as real numbers on the scale of ϕ , not as integers.*

Examples of ϕ specification with GENFIT:

■ When no prior is used:

```
pos 40 1 30 75 8.0
```

■ When a prior is used (MAP estimation):

```
pos 40 1 30 75 8.0 prior normal 0.4 0.3
```

◆ If using GENGRID model shape:

- ❶ The character string POS.

- ❷ An integer: the **minimum** value of $100 \cdot \phi$ for the grid search.
- ❸ An integer: the **maximum** value of $100 \cdot \phi$ for the grid search.
- ❹ An integer: the **step size** of $100 \cdot \phi$ in the grid search.
- ❺ A real number ξ bounding the generalized estimates near the logistic estimates. A full description is in the preceding section on inputs for GENFIT operation.
- ❻+ If a prior is used, its specification, in the same format described for GENFIT operation.

Examples of ϕ specification with GENGRID:

■ When no prior is used:

```
pos 40 25 85 5 8.0
```

■ When a prior is used:

```
pos 40 25 85 5 8.0 prior normal 0.45 0.25
```

Next line: Marker for start of data

This line should contain the character string DATA.

Following lines: Individual data series

There must be one data block (group of lines) for each data series. Each block must include data for all y years; thus, each data block is the same length y . The composition of each block is as follows—

- (a) On the first line of the block, a series title (character, length ≤ 40 , in quotes). Example: "Spring survey & total landings"
- (b) On the second line of the block, a character string of length 2 with the type code for the series. Type codes are listed in Table 1 (p. 10).
- (c) Starting on the third line of the block, one data line for each year, with the following data on each line, separated by blanks —
 - (c1) *First number* — the year or other ID number. These integers must be consecutive, less than 9999, and identical from block (data series) to block.
 - (c2) *Second number* — a real number whose meaning depends on the series type: For type CE, the fishing-effort rate f for

9. When fitting the generalized model, ASPIC always fits the logistic model first, to improve starting values.

the year; for types CC or I1, the average relative abundance; for types I0 or I2, the relative abundance near the start or end of the year; for types B0, B1, or B2, the stock-biomass estimate.

(c3) *Third number* — a real number, required in CE or CC series only, giving yield for that year. Please see §7.2.3 for advice on allocating yield among data series. This number must not be present in B_n or I_n data series.

(c4) *Final number* — an additional real number, required only when the estimation option is MSE or MAP. In those cases, it is the c.v. of the data point. With other estimation options, the c.v. is ignored.

☛ Although yield-effort data series are designated type CE, effort is entered *before* yield on these lines. Similarly, in series type CC, the relative abundance appears before the yield.

6 Auxiliary Programs

6.1 ASPIC5to7

★ ASPIC5to7 is a utility program to convert input files from ASPIC 5 to ASPIC 7 format. A new file is written with extension `.a7inp`, and the existing input file (extension `.inp`) is not changed.

Like ASPIC, ASPIC5to7 is a text-mode program. Also like ASPIC, it is supplied in two variants: `aspic5to7.exe` for use from the command line, and `aspic5to7g`, for use with drag and drop.

For drag and drop operation, simply drag the icon of a valid ASPIC 5 input file to the icon for ASPIC5to7.¹⁰ An ASPIC 7 input file will be generated, and a display window will be opened to show the results of the conversion. This then should be closed by the user.

For command-line operation, simply enter the program name and name of the existing ASPIC 5.x input file. For example, the command

```
aspic5to7 sword.inp
```

¹⁰ The installed icon is labeled ASPIC5to7, but it runs `aspic5to7g.exe`.

will generate `sword.a7inp`. By default, the new file will contain comments to make it easier to read. To avoid this, use program option `-nocomments`, which may be shortened to `-nocom`. For example

```
aspic5to7 sword.inp -nocom
```

generates a new file without comments.

To change the operation of the installed shortcut so that generated files do not include comments, edit its properties and insert the option.

6.2 AGRAPH

The Windows program AGRAPH is intended to provide quick, legible graphics of ASPIC and ASPICP results.

AGRAPH can process files from ASPIC with `.fit` or `.bot` extensions and from ASPICP with `.prj` extension. The plots from `.fit` and `.bot` files include time-series of relative benchmarks and plots of observed and fitted abundance indices. For benchmark plots with confidence intervals, run a bootstrap, then a projection with ASPICP, and send the resulting `.prj` file to AGRAPH.

AGRAPH is not intended to meet all graphics needs of ASPIC users. It allows examining results quickly and supplies standard graphics for reports. For more advanced graphics, a spreadsheet or statistics program can be used, taking advantage of specialized ASPIC output files (§4.8).

This is the only program in the ASPIC Suite that incorporates a standard Windows GUI, with output available to any Windows printer, to a graphics file (WMF or EPS), or to the Windows clipboard.

Operation of AGRAPH is similar to that of any Windows program. It can be opened in three ways

- By clicking on its icon, then choosing a file for analysis
- By dragging a suitable file to the AGRAPH icon
- From the Windows command line

As a command-line example,

```
agraph sword.fit
```

will open file `sword.fit` and display a graph of the results.

AGRAPH contains a brief help screen that explains its menu items.

6.3 ASPICP

After an ASPIC bootstrap run, ASPICP calculates bootstrap confidence intervals on the estimated trajectories of population biomass and fishing mortality, both for the assessment period and for a projection period of up to 100 years.¹¹ One projection trial is made for each bootstrap trial in the original ASPIC run.

For technical information on ASPICP projections, see §8.7.

ASPICP output (.prj) files can be read by AGRAPH to make time plots of B/B_{MSY} and F/F_{MSY} with bootstrap confidence intervals.

6.3.1 ASPICP interface and use

The interface of ASPICP is similar to that of ASPIC: a text-mode program that reads from and writes to plain-text files. The program is supplied in two computationally identical variants: `aspicp5.exe` for use from the command line, and `aspicp5g.exe` for drag-and-drop.

ASPICP reads the user's projection specifications from a control file, which must have file extension `ctl`. The control file (among other things) gives the name of the `.bio` file from an ASPIC bootstrap run, from which bootstrap estimates of F_{MSY} , B_{MSY} , annual B , and annual F are read.

The contents of an ASPICP control file are explained in the following section, and several sample files are included in the ASPIC distribution. Control files are created and edited with a text editor (programming editor).¹²

To run ASPICP, either drag and drop a `.ctl` file to the ASPICP shortcut¹³ or use the command line. For example, the command

```
aspicp5 snapper.ctl
```

11. Long-term projections are useful only in a statistical sense. They are provided in ASPICP for use in an educational setting, to enable demonstrations of theoretical population properties under various management schemes.

12. The discussion of editors in §4.8.1 applies here.

13. The installed shortcut points to `aspicp5g.exe`

starts ASPICP and runs a projection as described in control file `snapper.ctl`.

The main ASPICP output report is written to a file with extension `prj`. More detailed results from projection trials are in a file with extension `prb`, an extension of the `.bio` file (Table 2) that includes projection years. The `.prb` file is meant for analysis with a statistics program or spreadsheet.

6.3.2 ASPICP control file specification

The control file for ASPICP is relatively short. For allowed representations of real, character, and integer data, please see §5.1.

The top portion of the control file does not allow full-line comments, but end-of-line comments are allowed. Any text following the required values on a line is treated as a comment.

The current version of the ASPICP control file has more features and flexibility than previous versions. The program will read older `.ctl` files,¹⁴ but the new format is preferred.

★

Line 1: ID string

Each ASPICP input file in new format must contain the following character string on line 1:

```
ASPICP-V4
```

Line 2: Projection title

This is a character string, length ≤ 100 . A title that includes blanks (spaces) must be enclosed in quotation marks. The ASPICP output file includes this title and the title of the original ASPIC run.

☛ The graphics library in AGRAPH uses the asterisk character (*) as an escape. If you will graph your projection results with AGRAPH, avoid using the asterisk in this title.

Example:

```
"Projection of swordfish at Fmsy"
```

14. The older format is given in the ASPIC 5 User's Guide

Line 3: Name of .bio file

A character string specifying the name of a .bio file from an ASPIC bootstrap run. If the filename contains blanks, it must be quoted.

Example:

```
redporgy.bio
```

★ Line 4: CV of MSY during projection

This is a real value from 0.0 to 1.0 that sets an additional CV on MSY during projections. Typical values range from 0.0 to 0.5. See §8.7.1 for details of how this number is used.

Line 5: Confidence interval control

❶ The first value on line 5 is a two-letter character string that sets the type of confidence interval used. This may be BC for bias-corrected confidence intervals (Efron and Gong 1983), or PC for simple percentile confidence intervals. The latter may be preferable when the BC intervals appear irregular, which can occur on some data sets.

❷ The second value on line 5 is an integer, 1 to smooth the confidence intervals or 0 to use unsmoothed results. Smoothing, a heuristic measure to improve regularity of the intervals, was the default in older versions of ASPICP. Using smoothing is recommended when using BC intervals.

Example:

```
BC 1
```

Line 6: Years to skip at start of plots

This is an integer Y , with typical values 0 to 5, that determines how many years are skipped from the start of the assessment period in printer plots of time trajectories. This affects printer plots only, not calculations. Setting $Y > 0$ can be useful to de-emphasize relatively imprecise estimates near the beginning of an assessment.

Line 7: Output control

This line holds three integer flags, which should have values 0 (no action) or 1 (take specified action).

❶ The first flag determines whether AGRAPH should open automatically at the end of projections to plot the results.

❷ The second flag determines whether a .prb file is written. This detailed output file can be read by a statistics package or spreadsheet to analyze projection results.

❸ The third flag determines whether an .rdat (R-compatible) output file should be written. This is a version of the main output file (.prj file) that can be read by R with its dget function.

Line 8: Random number seed

Line 8 holds one value, a seed for initializing the random-number generator.¹⁵ This entry is a large (7-digit) positive integer. Different seeds result in different random number sequences; using the same seed allows duplicating a previous run.

Example:

```
8254199
```

Following lines: projection specifications

Starting after line 8, line comments may be included in the .ctl file. Any line starting with the character # is a comment.

☛ The remainder of the control file is a series of specifications for the projection. Each specification line controls one projection year or a sequence of projection years in which the same management scheme is projected.

❶ The first value on each line is an optional multiplier. This consists of the character x followed by an integer. When, e.g., this value is $x5$, the specification on the line controls 5 years. Omitting the xn multiplier is equivalent to specifying $x1$ for the specification line.

❷ The next value is a real number, which sets the exploitation relative to some reference.

❸ The final value on the line is a character string designating a reference for the exploitation value. In the table below, “terminal year” means the end of the assessment.

15. The random number generator is used when the user CV of MSY is nonzero. A seed must be present in any case.

Value	Meaning
YABS	Yield in same units as assessment
YREL	Yield relative to yield in terminal year
MSY	Yield relative to estimated MSY
FREL	F relative to terminal F
FMSY	F relative to estimated F_{MSY}

Last line

The last line of the file marks the end of projection specifications. The line must begin with the string %% (two percent signs). Any following characters are ignored.

This terminator is required, or a fatal program error will occur.

6.3.3 Sample control file

The sample file below illustrates the use of end-of-line comments in the top part of the file and line comments in the bottom part.

```

ASPICP-V4
'Red Porgy - Fish at 0.9 Fmsy'
se-rpg.bio
0.1      -CV of MSY
BC 1     -Smoothed intervals
0        -Don't skip years
0 1 1
4520803
# Projection specs follow here
# The first one is for a single year:
1.0 YABS
# The next one is for five years:
x5 0.50 FMSY
# The next one is for many years:
x45 0.9 FMSY
%%END

```

The preceding file specifies a simulation of 51 years in total. In the first year, the population is fished with simulated yield equal to the terminal yield of the assessment. For the next five years, it is fished at 50% of F_{MSY} . For the next 45 years, it is fished at 95% of F_{MSY} .

7 Tips on using the ASPIC Suite

7.1 Estimation controls

7.1.1 Guesses of q

As in most fishery models, data on relative abundance are scaled by q to estimate absolute abundance. In an ASPIC effort-yield data series (code CE in Table 1 on p. 10), q scales fishing effort to fishing mortality by $f = qF$. In a biomass-index series or catch-and-index series (codes IO, I1, I2, or CC in Table 1), q scales the index to population biomass by $I = qB$. In a biomass-estimate series (codes B0, B1, or B2 in Table 1), $q = 1$ by definition.

Estimation is typically more difficult when q is large. It may be useful to scale the catch and index data so that all $q_i < 0.5$ (except for biomass-index series).

7.1.2 Priors and bounds

Some prior distributions are bounded and thus imply bounds on the corresponding parameters.¹⁶ The user also supplies bounds on each parameter, which may not coincide with those implied by the prior. In such cases, ASPIC applies the following logic to adjust bounds:

- Each bound of each parameter is examined separately.
- If the bound implied by the prior is more restrictive than the parameter bound specified, the parameter bound is adjusted to coincide with the prior. The bounds written to the output file will reflect this.
- If the bound implied by the prior is less restrictive than the parameter bound specified, the parameter bound takes precedence, although the prior distribution itself is not adjusted.
- If the parameter is fixed (not estimated), no bounds are used in estimation. Printed bounds will be at the specified fixed value.

7.1.3 Starting guesses in bootstraps

Execution time in BOT mode can sometimes be reduced considerably by changing starting guesses

16. Of the priors supported by ASPIC, the uniform, triangular, and beta distributions are bounded.

after using FIT mode. Thus, it is useful to generate point estimates in FIT mode before using BOT mode. After examining the results from FIT mode, consider adjusting starting guesses and narrowing bounds on parameters in the input file. Nonetheless, bounds should be kept wide enough to include all plausible values.

7.2 Data issues

7.2.1 Missing values and zeros

Any negative data item in the input file is considered a missing value by ASPIC. Thus a value can be set missing by inserting a minus sign in front of it, and the value can be restored in a later analysis by removing the minus sign. When a missing value appears in the ASPIC input file, an estimate of the underlying value appears in the output file.

Missing or zero data values are allowed in an ASPIC input file only in some cases, depending on conditioning mode and type of data series. All possible cases are described in Table 3, along with the action taken by ASPIC. A data line with a missing value or with $f = 0$ does not contribute to the objective function; however, the nonmissing information present on the line is used in the analysis and does influence the estimates.

In MSE and MAP optimization modes, missing values of the data c.v. are not allowed.

Missing values are always distinct from true zero values. Zero should never be used to indicate a missing value, and a negative number should never be used for an observed zero.

Zero values of the abundance measure (CPUE) are never permitted, because it is assumed that the resource is not extinct during the analysis period. If an abundance index calculated prior to using ASPIC is zero in a given year, one could try using a small number (e.g., 20% to 50% of the lowest nonzero value) in its place. Use of an *extremely* small number (e.g., 1% of the lowest value) often gives a large residual during analysis; this can influence results strongly. Thus, converting zeroes to extremely small numbers is not recommended.

✓ The author has attempted to ensure that results of computations including missing and zero values

are correct under all combinations of data series type, conditioning mode, and model shape. To that end, a simple test has been done of every combination shown in Table 3. Still, some cases occur infrequently in real data and so have not been exercised repeatedly. Users are urged to examine results critically when missing and zero values are used and to advise the author if any problems should arise.

7.2.2 Using several data series

ASPIC can use more than one data series in estimation. The underlying assumption is that each abundance measure reflects the entire stock, except for random error. Thus, using this feature is similar to deriving an abundance index from each series and averaging them together.

It is not recommended to use abundance indices that are uncorrelated or negatively correlated with one another, unless their overlap is short. When abundance indices present different pictures, CPUE, instead, should be standardized with a model to remove effects of vessel type, area, gear, season, etc., before fitting an assessment model. The resulting index of yearly abundance can then be used as a CC series (see p. 10) with the total catch. This provides quicker and more reliable estimation from ASPIC, but more importantly, it removes explainable variation from the data, which would otherwise become noise.

On the other hand, an advantage of using several abundance measures directly in an assessment model is that it highlights the departure of each series from model predictions.

7.2.3 Allocating yield among series

When analyzing more than one data series, it is not always possible—or desirable—to associate yield with each measure of fishing effort rate or relative abundance. A common case is to have several abundance indices for a stock, but only the total annual yield. This section describes how ASPIC treats yield among data series. ✓

Yield is entered in both CE and CC series. Because ASPIC derives an abundance index from each CE series, it is important that the yield in a CE series

Table 3: Actions taken by ASPIC when data series include data record(s) with missing value(s) or zero(es). Dash (—) indicates normal data (neither missing nor zero). *M* indicates a record with missing datum; *Z*, with zero datum. Series type *Index* includes I0, I1, I2, B0, B1, and B2 series.

Cond. mode	Series type	CPUE or effort	Yield	Action by ASPIC
YLD	CC	M	—	Fit; estimate missing CPUE.
YLD	CC	—	M	Stop: missing yield not allowed when conditioning on yield.
YLD	CC	M	M	Stop: missing yield not allowed when conditioning on yield.
YLD	CC	M	Z	Fit with $F = Y = 0$ (no fishing).
YLD	CC	Z	M	Stop: missing yield not allowed when conditioning on yield.
YLD	CC	Z	—	Stop: zero CPUE never allowed.
YLD	CC	—	Z	Fit with $F = Y = 0$ (no fishing).
YLD	CC	Z	Z	Stop: zero CPUE never allowed.
YLD	CE	M	—	Fit; estimate missing CPUE.
YLD	CE	—	M	Stop: missing yield not allowed when conditioning on yield.
YLD	CE	M	M	Stop: missing yield not allowed when conditioning on yield.
YLD	CE	M	Z	Fit with $F = Y = 0$ (no fishing).
YLD	CE	Z	M	Stop: missing yield not allowed when conditioning on yield.
YLD	CE	Z	—	Stop for error: when $F = 0$, Y must be 0.
YLD	CE	—	Z	Stop: zero CPUE never allowed.
YLD	CE	Z	Z	Fit with $F = Y = 0$ (no fishing).
YLD	Index	M	—	Fit; estimate missing CPUE.
YLD	Index	Z	—	Stop: zero CPUE never allowed.
EFT	CC	M	—	Stop: missing CPUE not allowed when conditioning on effort.
EFT	CC	—	M	Stop: missing yield not estimable in this case.
EFT	CC	M	M	Stop: missing effort not allowed when conditioning on effort.
EFT	CC	M	Z	Stop: missing effort not allowed when conditioning on effort.
EFT	CC	Z	M	Stop: zero CPUE never allowed.
EFT	CC	Z	—	Stop: zero CPUE never allowed.
EFT	CC	—	Z	Fit with $F = Y = 0$ (no fishing).
EFT	CC	Z	Z	Stop: zero CPUE never allowed.
EFT	CE	M	—	Stop: missing effort not allowed when conditioning on effort.
EFT	CE	—	M	Fit; estimate missing catch
EFT	CE	M	M	Stop: missing effort not allowed when conditioning on effort.
EFT	CE	M	Z	Stop: missing effort not allowed when conditioning on effort.
EFT	CE	Z	M	Estimate with $F = Y = 0$ (no fishing).
EFT	CE	Z	—	Stop; if $F = 0$, Y must be 0.
EFT	CE	—	Z	Stop: zero CPUE never allowed.
EFT	CE	Z	Z	Estimate with $F = Y = 0$ (no fishing).
EFT	Index	M	—	Fit; estimate missing effort.
EFT	Index	Z	—	Stop: zero CPUE never allowed.

correspond to the fishing-effort rate in the same series.

In contrast, it is not necessary for the abundance index in a CC series to correspond to the yield in the

same series. For example, a valid CC series might have an abundance index computed from one fishery on a stock, paired with the total catch from all fisheries on that stock.

Despite the above, it is important that yield, summed across series, represent a constant proportion (usually assumed 1.0) of total removals. Changes in that proportion, whatever the cause, violate a fundamental assumption of ASPIC (as of most assessment models), that of constant sampling across time. The importance of the violation will depend on its severity.

7.3 Estimation difficulties



The information in this section is central to obtaining correct results. Please read it thoroughly.

The optimization method used in ASPIC (Nelder and Mead 1965) is quite robust, but in unmodified form frequently stops at local minima (these represent sub-optimal solutions). This has been addressed in ASPIC with a restarting algorithm that requires the same solution to be found several times in a row before it is accepted. The resulting optimizer is reasonably effective at avoiding local minima.

Nonetheless, ASPIC, like other programs that attempt complex nonlinear optimization, occasionally finds local, rather than global, minima. Two features of the program—beyond the restarting algorithm already mentioned—are available to detect and remedy this problem. First, solutions obtained at local minima are often not reasonable, and this will often cause one of the parameters to be estimated at either its minimum or maximum bound. In such a case, a warning message is printed, both on screen and in the output file.

7.3.1 Monte Carlo search

A second feature that can help avoid local minima is an optional Monte Carlo phase of estimation. When enabled, this tries to improve the initial fit by randomly searching for a better one in the neighborhood of the initial fit. If multiple searches are enabled, a shorter Monte Carlo search takes place periodically during fitting. Although such searches considerably increase the time required to find a solution, they can be helpful in avoiding local minima.

If a solution is difficult to find, it can be helpful to enable the Monte Carlo searches.

7.3.2 Issues with priors

When using MAP optimization, it can be difficult to arrive at stable estimates when a parameter's prior contains little or no probability mass around the solution obtained with standard maximum likelihood. This issue is especially important when using bounded priors, such as the triangular, beta, and uniform distributions. However, because of finite computing precision, even normal and lognormal distributions will act like bounded distributions in regions far from their centers. If this issue arises, try widening the prior distribution(s).

7.3.3 Sensitivity to seeds or guesses

When fitting difficult data sets, estimates may be sensitive to choice of random number seed. It is often useful to make runs with different random number seeds and starting guesses. In a stable solution, estimates typically vary on the order of 2% (usually less) with change of seed or starting guesses. Such agreement among several runs suggests that the solution is reliable. However, if larger differences occur, several approaches can be used to resolve the uncertainty: increasing the number of restarts, using a Monte Carlo search, using many seeds and choosing best results, refinement of the input data, or some combination of those ideas.

7.3.4 Estimation failure

Occasionally ASPIC fails to converge to a minimum at all. This often indicates that the data do not fit the model, which can sometimes be verified by examining the results with AGRAPH. When there is no fit, the input file should be checked for errors (e.g., reversed catch and effort values). Rarely, changing the maximum value of F allowed (line 10 of the ASPIC input file) can improve convergence, if the problem occurs in EFF optimization mode. If the objective function appears (from the screen output) to have been near convergence, simply trying a second ASPIC run that uses the first run's results as starting guesses can sometimes provide a good solution. If the model includes several data series,

it can be useful to eliminate one or more of them temporarily, to see if convergence can be achieved.

If none of these suggestions is successful, estimates can often be made with the following strategy. Set one parameter (usually B_1/K) to a fixed value by setting the corresponding estimation flag in the ASPIC input file) to zero. A solution might be possible conditional upon that value of B_1/K . If this technique leads to a solution, a range of fixed values of B_1/K can be tried and the solutions examined. Similar values of the objective function among solutions indicate that the solutions are nearly equivalent in terms of fit. Although the solutions will differ somewhat, they still may be useful, especially as confirmatory information or if little other information is available for management.

7.3.5 Reporting problems

Although ASPIC has been tested on thousands of simulated and real data sets and is believed to operate correctly, errors can exist in any computer programs. Any user experiencing bugs or suspected bugs is asked to send copies of the input and output files by email to mike.prager@mhprager.com. The author attempts to correct all errors promptly.

7.4 Interpretation of ASPIC Results



This section explains some features of ASPIC estimates, and reviews considerations important when using ASPIC. Prager (1994) and Prager et al. (1996) contain additional discussion.

7.4.1 Precision of parameter estimates

Production models tend to estimate some quantities considerably more precisely than others. Among the quantities more precisely estimated are maximum sustainable yield (MSY), optimum effort (f_{MSY}), and relative levels of stock biomass and fishing mortality rate. Here, relative levels means the biomass level relative to the level at which MSY is attained or the level of fishing mortality relative to that at which MSY is attained.

To provide more precise estimates, then, it is often useful to divide the stock-size estimates provided by ASPIC by the corresponding estimate of stock

size at MSY (B_{MSY}). Similarly, the estimates of fishing mortality rate F are divided by F_{MSY} to obtain relative estimates. In its output files, ASPIC provides such relative estimates. The relative estimates present a more precise picture of the condition of the stock, because in normalization, the estimate of q — which is usually imprecise — cancels out.

In contrast, absolute levels of stock biomass (and related quantities), which include uncertainty in the estimate of q , are usually estimated much less precisely. One cannot place nearly as much credence in the absolute estimates of stock size, F , or any quantities that depend upon them. Absolute estimates of B_t and F_t from ASPIC are provided for the modeler's information and are not intended for use as management guidelines.

Despite the preceding, absolute estimates of B and F are likely to be precise in one situation. When input data include biomass-estimate series that are reasonably precise themselves, the resulting estimates are likely to share that precision.

When two or more data series are analyzed, estimated ratios of catchabilities are typically estimated more precise than estimates of each q . Also, K may be estimated imprecisely or inaccurately even when MSY and f_{MSY} are estimated well. Again, this reflects the difficulty of translating relative biomass changes to an absolute scale.

The starting biomass, estimated as B_1/K , may be considered a nuisance parameter, and its estimate is often imprecise. Punt (1990) recommended fixing $B_1/K = 1.0$ (rather than estimating it) for the Cape hake stock off southern Africa, but it is not clear that that approach is appropriate for every stock. A similar approach is taken in using the penalty term described in §4.7.3.

To stabilize estimates from a particular data set, it can be useful to fit the model with B_1/K fixed at a range of values. Although the resulting estimates of the biomass trajectory will of course diverge at the beginning, they may provide sufficiently consistent estimates of present stock status for management purposes.

7.4.2 Catchability over time

The user can estimate separate catchability coefficients for different periods of time. This is accomplished in practice by putting the periods of time in separate data series, each padded with zeroes or missing values as appropriate. This procedure can be used to examine hypotheses about changing catchability with time, perhaps as a result of changing fishing gear or changing environmental conditions. In interpreting such models, there are several considerations.

One concern is estimating whether the improvement in fit obtained from a more complex model is statistically significant. An ASPIC model with time-varying catchability can be tested against the base model (i.e., the simpler model with constant catchability) with an F -ratio test. Here F is the F distribution of statistics, not fishing mortality rate. The test statistic is

$$F^* = \frac{(SSE_s - SSE_c)/\nu_1}{SSE_c/\nu_2}, \quad (1)$$

where SSE_s and SSE_c are the error sums of squares of the simple and complex models, respectively; ν_1 is the difference in number of estimated parameters between the two models; and ν_2 is the number of data points less the total number of estimated parameters. The significance probability of F^* can be obtained from standard tables of the F -distribution with ν_1 and ν_2 degrees of freedom.

A nonparametric test of the null hypothesis $q_1 = q_2$ can be conducted from the fitting results. This test is constructed by examining the bootstrap estimates of the ratio of the two catchability coefficients. As an example, assume that the alternative hypothesis is that $q_1 \neq q_2$. Then the null would be rejected at $P < 0.05$ if a bias-corrected 95% confidence interval on q_1/q_2 did not include the value 1.0. Like the F test, this test is approximate because of the possibility of specification error. In addition, bootstrapping residuals may underestimate the true variability present in a time series (Freedman and Peters 1984). This has been addressed to some degree in the current version of ASPIC by a slight inflation of the residuals (§8.6.3 before bootstrapping is begun).

7.4.3 Projections

In interpreting projection results from ASPICP, it is helpful to consider the differences between age-structured and non-age-structured models.

The author has participated in many assessments in which both age-aggregated production models (such as ASPIC) and age-structured (cohort) models were used on the same stock. Usually, estimates of relative population trend (B/B_{MSY}) and relative fishery trend (F/F_{MSY}) from the two models have been similar. Occasionally, when abundance indices are noninformative, the age-structured model can estimate population trends reliably, while the production model cannot. I have not yet encountered data that supported both types of estimation with reasonable precision, yet give strikingly different results from various models.

Nonetheless, one area in which from age-aggregated models tend to differ from age-structured models is in estimating recovery from overfishing. In the author's experience, projections based on production-model dynamics often estimate faster recovery than do projections from age-structured methods. I cannot say categorically whether one type of projection is more accurate than the other, because few stocks so assessed have recovered from overfishing. Still, I suspect that projections based on production models are sometimes overly optimistic, particularly for species that mature at relatively old ages. Age-structured models can capture the lag in recovery that occurs as increased recruitment and survival propagate through the immature age classes. Non-age-structured models do not explicitly capture this, so in cases where depletion extends below the age of maturity, they may project recovery at a rate not attainable by the actual population.

8 Technical appendix

This section contains mathematical details of likelihoods other objective functions, penalties, bootstrap approach, and similar matters.

★

8.1 Estimation methods—overview

ASPIC 7 offers a choice of four estimation methods, each with corresponding objective function.¹⁷ The choice of estimation method is made in the input file, as described on p. 13. Under normal circumstances, the four methods should produce similar results.

1. **Least squares** (LS) estimation is a standard approach that, in many analyses, is equivalent to maximum likelihood. It was the first fitting method used widely in modern statistical analysis.¹⁸
2. **Least absolute values** (LAV) estimation¹⁹ provides robust estimation with fewer instabilities than some other resistant techniques (Shertzer and Prager 2002).
3. **Maximum likelihood** (ML) estimation is the approach most widely used in modern statistical analyses.
4. **Maximum a posteriori** (MAP) estimation is an abbreviated Bayesian method; essentially, ML with priors. It allows prior information on parameters to influence current estimates.

Regardless of estimation method, fitting is based on minimizing residuals in some way. Residuals are formed from different types of data (e. g., abundance index values, biomass estimates, fishing effort rates), depending on the statistical conditioning chosen and the type of data series. In this section, we refer to all such as “population data.”

Because observation errors are assumed lognormal, residuals are formed after log transformation, in all estimation methods, and with all data types.

8.2 Least-squares estimation

Since the original version, ASPIC has offered data-series weighted least squares estimation, which is specified in ASPIC 7 with the SSE option. When the series weights are set to inverses of the series’ error

17. An objective function is a function minimized or maximized to arrive at desired results. Here, the function is minimized to find parameter estimates for a production model.

18. The least squares method was published by French mathematician Adrien-Marie Legendre in 1806.

19. The method is known by several other names, such as least absolute errors, least absolute deviations, least absolute residuals, and L_1 regression.

variances, least squares estimation is equivalent to maximum likelihood (Bradley 1973).

The implementation in ASPIC 7 does not accept annual observation CVs. If they are available, ML or MAP estimation (§8.4, §8.5) can be used instead.

8.2.1 Data-series terms

For each data series (indexed by j , where $j = \{1 \dots J\}$), an SSE term S_j contributes to the objective function.

$$S_j = \sum_t w_j (\log X_{jt} - \log \hat{X}_{jt})^2 \quad (2)$$

where

- t is an index of time (usually in years), $t = \{1 \dots T\}$
- w_j is a series-specific statistical weight,
- X is the observed (input) population datum, and
- \hat{X} is the estimated population datum.

8.2.2 Penalty for $B_1 > K$

All ASPIC estimation methods other than MAP allow the user to apply a penalty to estimates of initial biomass B_1 that are greater than estimated unfished biomass (K). When the user specifies penalty weight $w_b > 0$, an additional term contributes to the objective function.

The penalty is never applied when the value of B_1/K is set to a fixed value in the input file.

The penalty term differs by objective function. For the SSE option, the penalty S_b is—

$$S_b = w_b (\log \hat{B}_1 - \log (\min(\hat{K}, \hat{B}_1)))^2 \quad (3)$$

Thus, when $\hat{B}_1 < \hat{K}$, $S_b = 0$.

8.2.3 Total SSE

The total least-squares objective function \mathcal{O}_{SSE} is

$$\mathcal{O}_{SSE} = S_b + \sum_{j=1}^J S_j \quad (4)$$

8.3 Least absolute values estimation

Least absolute values (LAV) estimation is a fitting method less affected by outliers than LS or ML. However, it can be more difficult to reach convergence. The current implementation accepts series weights, but not annual observation CVs.

8.3.1 Data-series terms

For each index or biomass series (indexed by j , where $j = \{1 \dots J\}$), an LAV term A_j contributes to the objective function.

$$A_j = \sum_t w_j \left| \log X_{jt} - \log \hat{X}_{jt} \right| \quad (5)$$

where

- t is an index of time (usually in years), $t = \{1 \dots T\}$
- w_j is a series-specific statistical weight,
- X is the observed population datum, and
- \hat{X} is the estimated population datum.

8.3.2 Penalty for $B_1 > K$

As described in §8.2.2, a penalty can be applied with weight w_b to estimates of initial biomass B_1 that are greater than unfished biomass (K).

The penalty used with the LAV option is—

$$A_b = w_b \left| \log \hat{B}_1 - \log (\min(\hat{K}, \hat{B}_1)) \right| \quad (6)$$

Thus, when $\hat{B}_1 < \hat{K}$, $A_b = 0$.

8.3.3 Total LAV

The total LAV objective function \mathcal{O}_{LAV} is

$$\mathcal{O}_{LAV} = A_b + \sum_{j=1}^J A_j \quad (7)$$

8.4 Maximum-likelihood estimation

The maximum-likelihood approach was added to ASPIC 7 to support MAP estimation. It can be used alone by specifying the MLE option (see p. 13). The current implementation requires the user to supply series weights (which may all be unity) and annual observation-error CVs.

8.4.1 Data-series terms

Because ASPIC uses a function minimizer, negative log likelihood is used as the objective function. This is formulated as a sum of terms, one for each data series. The term L_j for data series j is—

$$L_j = \sum_t \left(\frac{\log(2\pi)}{2} + \log \sigma_{jt} + \frac{(\log X_{jt} - \log \hat{X}_{jt})^2}{2\sigma_{jt}^2} \right) \quad (8)$$

where

- t is an index of time (usually in years),
- σ_{jt} is the observation standard error in log space, calculated from the observation CV and series weight as described below,
- X_{jt} is the observed population estimate or abundance index, and
- \hat{X}_{jt} is the model's estimated population size or abundance index value.

8.4.2 Observation standard error

The observation standard error σ_{jt} in (8) is calculated for each datum from the corresponding series weight w_j and observation CV c_{jt} in the user's input file—

$$\sigma_{jt} = \sqrt{\log(1 + (c_{jt}/w_j)^2)} \quad (9)$$

8.4.3 Penalty for $B_1 > K$

As described in §8.2.2, a penalty can be applied with weight w_b to estimates of initial biomass B_1 that are greater than unfished biomass (K).

The penalty used with ML estimation is—

$$L_b = \frac{(\log \hat{B}_1 - \log \min(\hat{K}, \hat{B}_1))^2}{2\sigma_b^2} \quad (10)$$

where

$$\sigma_b = \log(1 + (1/w_b)^2) \quad (11)$$

When $\hat{B}_1 < \hat{K}$, (10) reduces to zero.

Because the penalty term differs between LS and ML estimation, estimates will differ slightly between methods when the penalty is nonzero. ✓

8.4.4 Total likelihood

The total MLE objective function \mathcal{O}_{MLE} is

$$\mathcal{O}_{\text{MLE}} = L_b + \sum_{j=1}^J L_j \quad (12)$$

8.5 Maximum a posteriori estimation

MAP estimation is a form of penalized likelihood, and as such, its implementation in ASPIC 7 is based on the maximum likelihood methodology described above. When using MAP estimation, terms are added to the negative log likelihood (12) to reflect the prior probability of each estimated parameter. Assuming K parameters numbered $k = 1, 2, \dots, K$

$$\mathcal{O}_{\text{MAP}} = L_b + \sum_{j=1}^J L_j + \sum_{k=1}^K L_k \quad (13)$$

where L_b and L_j are as in (10) and (8), respectively, and L_k is the negative log density of the prior distribution of parameter k at its current estimate.

8.6 Bootstrapping

8.6.1 Overview

Bootstrapping is implemented slightly differently in different estimation modes. This is because, in LS and LAV estimation²⁰, ASPIC interprets the series weights w_j differently from their interpretation in ML and MAP estimation.²¹ In addition, ML and MAP estimation use annual observation CVs read from the input file. Finally, the bootstrapping algorithm used in earlier versions of ASPIC has been left unchanged for LS and LAV estimation, to facilitate making comparisons to past analyses.

The essential difference is definition of the observation standard deviation σ_{jt} . In ML or MAP estimation, σ_{jt} is calculated by equation (9). In LS or LAV estimation, it is calculated as

$$\sigma_{jt} = \sqrt{1/w_j} \quad (14)$$

which implies equal variance for all observations in a single data series.

20. SSE and LAV options

21. MLE and MAP options

8.6.2 Initial fit

The first step that ASPIC takes in bootstrapping is to fit the data in the normal manner. After this initial model fit, results are saved from each data observation for use in each bootstrap trial. Depending on data-series type (Table 1) and statistical conditioning (p. 13), the data saved may be index values, yields, fishing effort rates, or stock biomasses. In this section, we refer to any such type of data simply as observed or predicted population data, and we symbolize such data as X .

8.6.3 Residual inflation factor

In bootstrapping, each residual is increased by an inflation factor \mathcal{R} due to Stine (1990). This factor is calculated—

$$\mathcal{R} = 1/\sqrt{1 - k/N} \quad (15)$$

where k is the number of estimated parameters, and N is the total number of nonmissing observations from all data series combined. This adjustment is usually small, which can be verified by examining the value of R in the `.bot` file.

8.6.4 Resampling algorithm

To provide data for resampling, two values are saved from each point in the initial (non-bootstrapped) fit—

- The predicted population value, \hat{X}_{jt}
- The normalized, inflated residual, \tilde{r}_{jt}

The latter is defined—

$$\tilde{r}_{jt} = \frac{\mathcal{R} \cdot r_{jt}}{\sigma_{jt}}, \quad (16)$$

where the raw residual is

$$r_{jt} = \log X_{jt} - \log \hat{X}_{jt} \quad (17)$$

For resampling, the \tilde{r} from all data series are put into a single pool. Then, to generate a trial resampled dataset, a set of synthesized observations \check{X}_{jt} is generated using

$$\check{X}_{jt} = \hat{X}_{jt} \cdot \exp(\sigma_{jt} \tilde{r}_{\circ}) \quad (18)$$

where \tilde{r}_\circ is a residual randomly chosen, with replacement, from the pool.

The resampled dataset is fit, estimates are saved, and bootstrapping proceeds to the next trial.

8.7 Projections in ASPICP

Uncertainty is represented in projections through two devices. The first is that estimation uncertainty in B_{MSY} , F_{MSY} , and terminal F and B is passed from ASPIC to ASPICP through the `.bio` file. The second is that the user can specify to ASPICP an additional process CV²² for projected MSY.

In projections, the point estimates from ASPIC are considered the underlying true biological reference points, and the estimates from bootstrap trials represent estimation uncertainty about those true values. When the user specifies projected F relative to F_{MSY} or projected Y relative to MSY, the denominator in each case is the point estimate. Because the projection of each bootstrap may have a different value of the benchmark, a projection will have variability, from which confidence intervals are constructed.

When simulation results are plotted by AGRAPH, relative benchmarks again are computed with the corresponding point estimate in the denominator.

8.7.1 Process variability in MSY

- ★ As noted, the user can specify c , a process CV applied to MSY in projections. This can be used to simulate various levels of ecological variation. When $c > 0$, MSY in projection trial i will be set at

$$\text{MSY}'_i = \text{MSY}_i \exp\left(\mathcal{N}c - \frac{c^2}{2}\right) \quad (19)$$

where MSY_i is the estimate of MSY from ASPIC for bootstrap trial i ; \mathcal{N} is a normal (0,1) random deviate; and c is the added CV on MSY.

Setting $c > 0$ is a way of simulating process variability, which is particularly useful when making long projections for educational purposes.

When the population is projected, the carrying capacity K is held constant in each trial, which results

22. CV = coefficient of variation.

in F_{MSY} varying in proportion to MSY when $c > 0$. If the user projects at a multiple γ of MSY or F_{MSY} , γ is applied to the estimated value from bootstrap i without variation. Thus, any γ applied to the realized benchmark in that year will vary from the specified γ when $c > 0$.

9 Source code availability

The Fortran source code for this software uses certain proprietary routines from the book *Numerical Recipes* by Press et al., and for that reason can not be freely distributed. Numerical Recipes Software has kindly granted their permission (ID number V95038) for the author to supply the source code to users upon specific request. However, any source code so supplied must not then be redistributed to others.

The author also wishes to be aware of all distribution of the source code, so that any useful modifications or error corrections can be made in the master copy of the software to benefit all users.

If you require a copy of the Fortran source code for this software, please request it from the author. In your letter or email, please include the following:

1. Your true name, institutional affiliation, physical address, and email address or telephone number
2. Your agreement that you will not redistribute the source code to others.
3. Your agreement that, if you modify the source code, you will not distribute any resulting program (or programs), nor the modified source code, beyond your immediate working group at your own location.
4. Your agreement that, if you modify the source code, you will ensure that your users do not redistribute either the modified source code or any resulting program or programs.
5. Your agreement that if you identify errors in the software, you will contact the author promptly so that the errors can be fixed for all users.

References

- Bradley, E. L. 1973. D. The equivalence of maximum likelihood and weighted least squares estimates in the exponential family. *Journal of the American Statistical Association* 68: 199-200.
- Efron, B. E., and G. Gong. 1983. A leisurely look at the bootstrap, the jackknife, and cross-validation. *American Statistician* 47: 36-48.
- Fletcher, R. I. 1978. On the restructuring of the Pella-Tomlinson system. *Fishery Bulletin* 76: 515-521.
- Fox, W. W. Jr. 1970. An exponential yield model for optimizing exploited fish populations. *Transactions of the American Fisheries Society* 99: 80-88.
- Fox, W. W., Jr. 1975. Fitting the generalized stock production model by least-squares and equilibrium approximation. *Fishery Bulletin* 73: 23-37.
- Graham, M. 1935. Modern theory of exploiting a fishery, and application to North Sea trawling. *Journal du Conseil International pour l'Exploration de la Mer* 10: 264-274.
- Freedman, D. A., and S. C. Peters. 1984. Bootstrapping a regression equation: some empirical results. *Journal of the American Statistical Association* 79: 97-106.
- Haddon, M. 2001. *Modeling and quantitative methods in fisheries*. Chapman & Hall, Boca Raton, Florida. 406 p.
- Hilborn, R., and Walters, C. J. 1992. *Quantitative fisheries stock assessment*. Chapman and Hall, New York, NY. 570 p.
- Klockars, A. J., and G. Sax. 1986. *Multiple comparisons*. Sage University, Quantitative Applications in the Social Sciences, Paper No. 07-61.
- Mohn, R. K. 1980. Bias and error propagation in logistic production models. *Canadian Journal of Fisheries and Aquatic Science* 37: 1276-1283.
- Nelder, J. A., and R. Mead. 1965. A simplex method for function minimization. *Computer Journal* 7: 308-313.
- Pella, J. J. 1967. A study of methods to estimate the Schaefer model parameters with special reference to the yellowfin tuna fishery in the eastern tropical Pacific ocean. Dissertation, University of Washington, Seattle.
- Pella, J. J., and Tomlinson, P. K. 1969. A generalized stock production model. *Bulletin of the Inter-American Tropical Tuna Commission* 13(3): 419-496.
- Prager, M. H. 1992a. ASPIC: A Surplus-Production Model Incorporating Covariates. Collected Volume of Scientific Papers, International Commission for the Conservation of Atlantic Tunas (IC-CAT) 28: 218-229.
- Prager, M. H. 1992b. Recent developments in extending the ASPIC production model. ICCAT Working Document SCRS/92/127. 10 p.
- Prager, M. H. 1994. A suite of extensions to a nonequilibrium surplus-production model. *Fishery Bulletin* 92: 374-389.
- Prager, M. H. 2002. Comparison of logistic and generalized surplus-production models applied to swordfish, *Xiphias gladius*, in the north Atlantic Ocean. *Fisheries Research* 58: 41-57.
- Prager, M. H., and C. P. Goodyear. 2001. Effects of mixed-metric data on production model estimation: simulation study of a blue-marlin-like stock. *Transactions of the American Fisheries Society* 130: 927-939.
- Prager, M. H., C. P. Goodyear, and G. P. Scott. 1996. Application of a surplus production model to a swordfish-like simulated stock with time-changing gear selectivity. *Transactions of the American Fisheries Society* 125: 729-740.
- Punt, A. E. 1990. Is $B_1 = K$ an appropriate assumption when applying an observation error production-model estimator to catch-effort data? *S. African Journal of Marine Science* 9: 249-259.
- Punt, A. E., and R. Hilborn. 1996. *Biomass dynamic models. User's manual*. FAO Computerized Information Series (Fisheries), No. 10. Food and Agriculture Organization of the U.N., Rome. 63 p.
- Quinn, T. J., and R. B. Deriso. 1999. *Quantitative Fish Dynamics*. Oxford University Press, New York. 542 p.
- Schaefer, M. B. 1954. Some aspects of the dynamics of populations important to the management of the commercial marine fisheries. *Bulletin of the Inter-American Tropical Tuna Commission* 1(2): 27-56.
- Schaefer, M. B. 1957. A study of the dynamics of the fishery for yellowfin tuna in the eastern tropical Pacific Ocean. *Bulletin of the Inter-American Tropical Tuna Commission* 2: 247-268.

- Shertzter, K. W., and M. H. Prager. 2002. Least median of squares: a suitable objective function for stock assessment models? *Canadian Journal of Fisheries and Aquatic Science* 59: 1474-1481.
- Shertzter, K. W., M. H. Prager, D. S. Vaughan, and E. H. Williams. 2008. Fishery Models. Entry in *Encyclopedia of Ecology*. Elsevier, Amsterdam.
- Stine, R. 1990. An introduction to bootstrap methods: examples and ideas. Pages 325-373 in J. Fox and J. S. Long (eds.), *Modern methods of data analysis*. Sage Publications, Newbury Park, California. 446 p.
- Williams, E. H., and M. H. Prager. 2002. Comparison of two estimators for the generalized production model. *Canadian Journal of Fisheries and Aquatic Science* 59: 1533-1552.