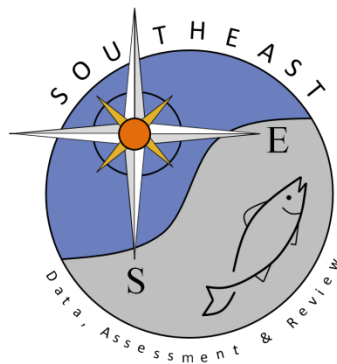


Trends from Non-CPUE Standardized King mackerel Landing Logs from Long Bay, South Carolina Recreational Pier Fishery

Christian Johnson

SEDAR38-DW-12

22 November 2013



This information is distributed solely for the purpose of pre-dissemination peer review. It does not represent and should not be construed to represent any agency determination or policy.

Please cite this document as:

Johnson, C. 2013. Trends from Non-CPUE Standardized King mackerel Landing Logs from Long Bay, South Carolina Recreational Pier Fishery. SEDAR38-DW-12. SEDAR, North Charleston, SC. 48 pp.

Trends from Non-CPUE Standardized King mackerel Landing Logs from Long Bay, South Carolina Recreational Pier Fishery

(Adapted from 2013 M.S. Thesis, "A Case for and Efficacy of Video Surveillance of Recreational Pier Fisheries")

Christian Johnson (johnson@umces.edu), Coastal Carolina University

Introduction

Anecdotal reports by recreational pier anglers insist that the number of King mackerel (*Scomberomorus cavalla*) landed at piers in Long Bay, SC have declined in recent years. Two of the piers claiming declines provided fishing logs that listed the date, weight and the anglers who landed each fish for every fish landed per year. It is assumed that all the fish landed would have been recorded since the fish is highly prized for its food value and the fact that it is a target for several local fishing tournaments. The portion of the population of King Mackerel that come into range of the piers is of harvestable size (Godcharles and Murphy 1986) which reinforces the idea that all landings would have been recorded. Additionally, it is rare for a single anglers to land more than a single fish in a single day (especially within the last decade) so maxing out of catch limits resulting in discards of subsequent fish would not have resulted in unreported fish; the fish would likely be recorded before discard anyways. The variables in these logs were put to Spearman Rank Correlation and regression to identify significant correlations that could help to reveal trends in the fishery. It is hypothesized that examination of the King mackerel landing logs will provide evidence for trends in measures including landing numbers and size, and fishing success during the time series.

Methods

Two privately held recreational landing logs were obtained from two recreational fishing piers in Long Bay, SC. Fish were weighed at a calibrated weigh station located on each pier. The date, the identity of the fishers, and the common name and weight of each fish is recorded on logs from both piers.

Surfside Pier (1973-2012)

The first log was maintained by the management of Surfside Pier, Surfside Beach, South Carolina. The logs included 30 years of fishing records between the years of 1973 and 2012. Hurricane Hugo destroyed the pier in September of 1989 and remained out of commission through 1990 so there are no records for that time period. Supposedly due to management/ownership changes, records between 1993 and 1999 were missing, leaving only two and a half (Spring 1989) record years from the nineties from Surfside Pier. The log consisted of 15 species landings, though the intensity of record keeping seemed to vary from year to year and by species. For certain highly valued species such as King mackerel it is assumed that all individuals were recorded due to their status as a trophy species and for entry into tournaments. The species whose numbers were not regularly reported would at least have been reported when individuals were of large size since those records would have been turned over to the local chamber of commerce for a chance to win prizes via entry into a bay wide fishing tournament. Sixteen species were chosen for the analysis based on their regular inclusion in the records. For Surfside pier Non-parametric Spearman Rank correlations were performed to identify trends in the weight of the tournament winning (heaviest) fish.

Springmaid Pier Kingfish Club (1989-2011)

The second log was maintained by Springmaid Pier Kingfish Club and consisted of 20 years of landing logs between 1989 and 2011. The destruction of the pier by Hurricane Hugo resulted in no logs from fall 1989 through 1990. The 2004 and 2005 records were inexplicably missing from the logs and only the number of King mackerel landed by year could be obtained for the years 2006-2011. The club disbanded after the 2011 fishing year citing, "There are no fish for our club to catch". The Springmaid Pier records were combined with the Surfside Pier records in time series since the Springmaid records occur during the data gap in the 90s from Surfside Pier. Their similarity to one another was evaluated visually as they seem to complement one another and statistically via Spearman rank correlation of the number of landings at one versus the other.

The size of King mackerel were reported for all reported landings in the time series to indicate the range of size fish are vulnerable to the pier fishery. The number of fish per year or per season and total weight of fish per year were also recorded. The average weight of landings per year and per season was also calculated and tested against time since average weight of landings can be used as a gauge of population health and success of fishery goals. The total number of fishers who landed fish per year was counted to test whether the number of anglers who landed fish has declined as would be expected with declining landings. This is not a true measure of effort of course as there is no tally of the number of anglers who fished but did not catch.

A major obstacle of the King mackerel data set is the lack of effort reporting which is used in a calculation of catch per unit effort, such as the number of anglers or hook-hours fished in a day. King mackerel are not continually present throughout the year within the study area due to seasonal migrations. For King mackerel there is clearly a fall run and spring run so the tally of the number of fish per spring season and fall season was possible. Ninety days was chosen for the length of the spring season (May through June) and seventy-five days for fall (August 15th - October). Though landings occurred before or after the chosen temporal range, the majority of landings occurred within this range and on all years. To get some measure of standardization, an index of landing abundance was calculated by dividing the number of fish landed during a season by the number of days in that season. For example, an index of landing abundance equaled to one says that in the time frame of interest, on average one fish was landed per day. An index of king mackerel landing abundance was also calculated for fish per calendar year by adding the Spring and Fall seasons.

The temporal variation of the start and end days of King mackerel landing seasons was assumed to be a response to the temporal variations of King mackerel migration timing. To approximate the dates of arrival and departure to and from the fishery, the dates of first and last landing per year and per season were plotted for visual inspection and tested with spearman rank correlation in an attempt to detect change during the time series. Additionally the date of first landing was subtracted from the date of last landings per year and per season to give the length of the season which was also tested for correlation with time to detect change in season length. Season length was tested against the landing index to test for a relationship.

The goal of this portion of the study is to determine whether anglers testimony regarding declining populations can be supported by their self-collected data sets and if they are supported, how are the trends from their data related to trends on a larger scale such as state and the King mackerel population wide scale. The results from the recreational pier logs were compared to state and national landing records maintained by the NMFS Marine Recreational Fishery Statistical Survey (MRFSS). analyzed for King Mackerel landing and effort trends.

Total weights by year and average weight by year were analyzed for significant trends using Spearman Rank. The pier records were examined in the context of the state wide and stock wide catch

estimates by the National Marine Fisheries Service in an attempt to show that landing trends at piers are reflective of regional and stock wide trends.

Results and Discussion

At Surfside Pier, tournament King mackerel winner landing weight was highly ($p < .01$) significantly correlated with year. Additionally, only the 2000-2011 period was tested (no king was landed in 2012) which increased the R^2 from .27 to .64 and the trendline steepness increases from -0.14 to -0.67 (Figure 1a/1b). This time period is consistent with start of anecdotal reports of landing declines by angler, which would be consistent with a struggling fishery population or avoidance of the fishing area due to some environmental repellent. Environmental signals that may influence King mackerel landings may include temperature or oxygen concentration anomalies associated with upwelling events. Hypoxic events have been documented to be associated with or as the cause of the Summer Flounder fishery anomalies in the area on at least two occasions within the last decade (Sanger et al. 2010)

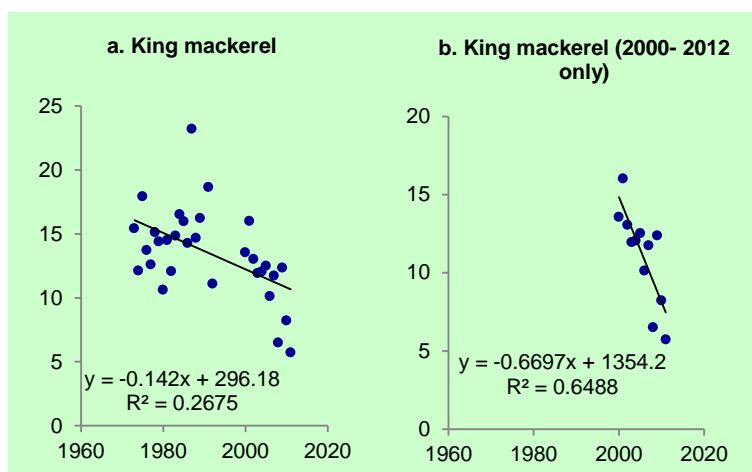


Figure 1. Weight of tournament winning King mackerel at Surfside Pier.

It is acknowledged here that number of fish landed per hook-hour or at least fish landed per angler-hour would have been a preferable effort measure since it is possible and likely probable that variations in these effort parameters could alter the number of fish landed per day. There is no way to know from the data set whether one or ten anglers caught the one fish landed on a particular day. That being said and given the data set, the number of fish landed/day is the lowest achievable unit of resolution possible. Another uncertainty that cannot be addressed in this study is how fishing effort may vary with fishing success. King mackerel for instance are known to come in runs lasting anywhere from a day to several consecutive days. So the question is: once one King mackerel is landed, does that anglers spread the word which leads to an increase in effort? And does that increase in effort alter the number of fish landed? It is probable that the two fishers are more likely to catch 2 fish in a day than it is for one angler to catch 2 fish in a day. There is no remedy for these issues so it is assumed that the possible effect if they did exist would be equal across all years of the time series.

Figure 2 is a visual depiction of the weight of all landings of King Mackerel by date during the time series of interest for both piers. The Springmaid landings fill in the gap left by the missing records

from Surfside.

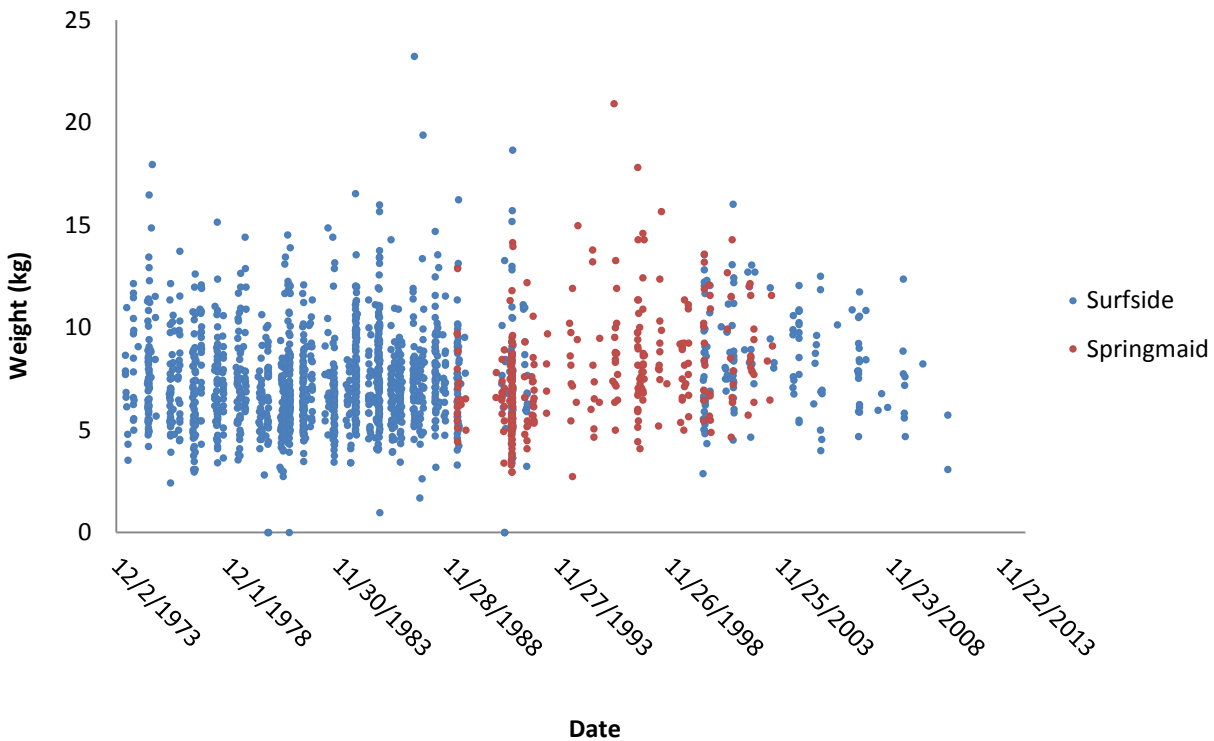


Figure 2. All recorded king mackerel landings at Surfside and Springmaid Piers (n=1986).

The number of landing between sites was tested using Spearman Rank correlation to test the justification for using Springmaid Pier to fill in the gaps in the Surfside data. Spearman Rank correlation validated the relationship with an r_s of .774 and $p < .05$ for 10 years between 2000 and 2011 in which the total number of Mackerel landed was reported for both data sets. The R^2 of the linear trendline for this scatter diagram was increased to .56 from .23 when the outlier at data point 19,46 was removed from the data set. If this relationship is true for two piers that are miles apart it may be fair to assume that many or all of the piers in the area experience similar variation in temporal landing success. This suggests the notion of a population wide spatial and/or temporal variability that is experienced equally by the regional fishery instead of chance that one pier catches more on some years than others as fish move in and out and around Long Bay. The total number of landings at each pier

Figure3 graphs the sizes of all King mackerel landings at Surfside Pier and Springmaid Pier shows the size of fish that are vulnerable to the fishery. This information is not useful to determine year classes with much certainty since sex information is not present which would influence the results since Kings exhibit sexual dimorphism with females aging faster after age two and reaching a larger maximum size. The length estimate was calculated from a length weight relationship determined by a study of unsexed fish. The weight of each King mackerel was reported for every fish landed OA length weight ($W=a*L^b$) conversion was used to estimate length using parameter estimates ($a=.08200$, $b=2.990$) made from measure of the South Atlantic population (Claro 1994).

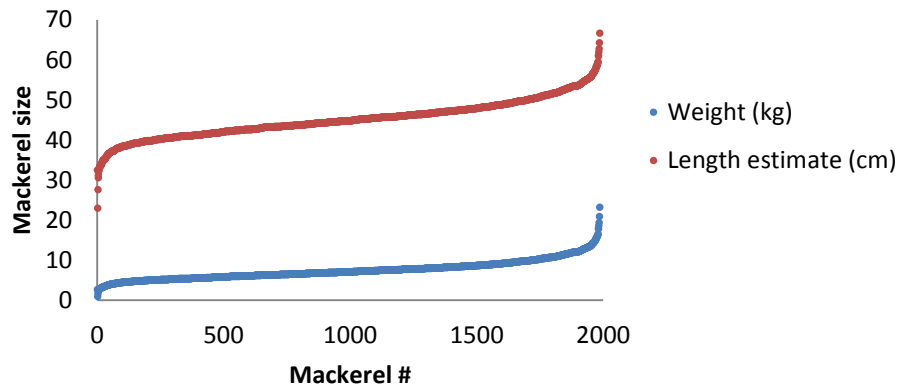


Figure 3. Size s of all King mackerel landed (n=1986) all years at Springmaid and Surfside Pier. Note: A weight-length relationship equation ($W=a*L^b$) was used to estimate length using parameter estimates ($a=.08200$, $b=2.990$) based on a study of the South Atlantic population (Claro 1994). It is possible that anglers confused juvenile King mackerel with Spanish mackerel.

The average weight of landings by year was calculated to determine if any trends were occurring (Figure 4). There is an increase through the early 2000s with a max in 2006, followed by a decline well below the pre-2006 lowest measure on record. It should be noted that the sample size is lower for the time span of decline with just as low as one fish landed used in the average calculation so to what extent the graph should be trusted is because of the variation in sample size between years however does match what would be expected with a failing population due to overfish where the largest fish are targeted and removed first. The drop in average weight in the 2000s is consistent with the decline seen in the weight of the tournament winning fish.

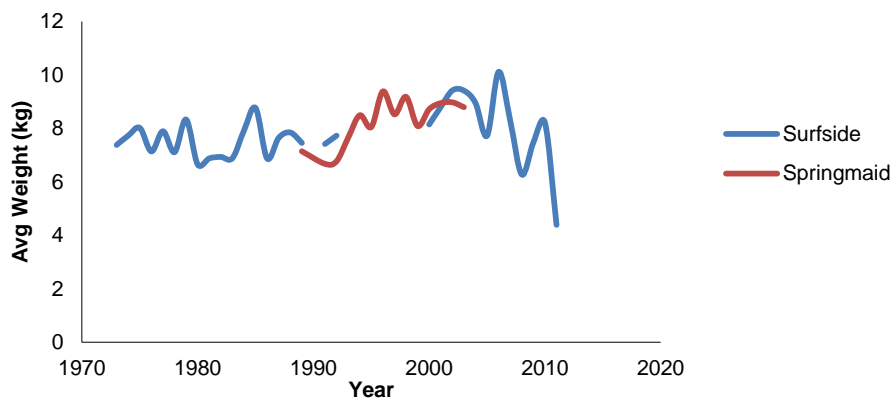


Figure 4. The average weight of King mackerel landed per year at Surfside Pier

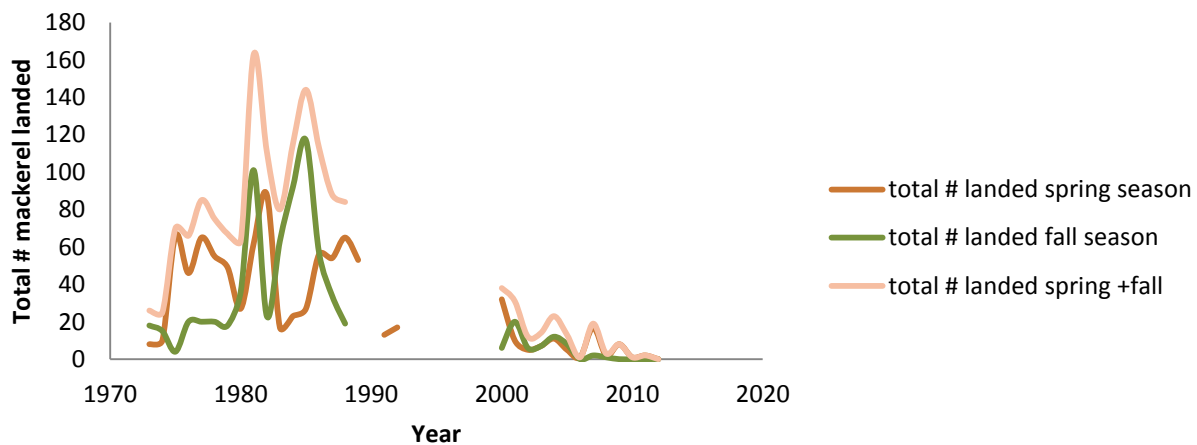


Figure5. The total number of King mackerel landed by fishing season and calendar year.

Season length (not to be confused with the definition of “season” in the index of landing abundance calculation) is defined here as the number of days from the day of first catch to the day of last catch of King mackerel. There is a spring run and fall run which is why the days in between the last fish caught in the spring and the first in the fall are not included. The total length of season adequately predicted the number of fish landed in a season according to Spearman Rank ($r_s = .703$, $p < .000$). So, more fish are landed when they are within reach of the fishery for a longer time span. Notice there have been no recorded landings in fall since 2006 and there were no recorded landings in 2012.

Length of a season varies, so the starting and end dates of each season throughout the time series were examined to see how they may have varied with time and whether any trending towards earlier or later arrival and departure times could be determined (Figure 6). The day of the year for first and last landed fish, of the spring and fall seasons were plotted by over the time series for Surfside and Springmaid (trend lines and Spearman Rank correlation represent Surfside only). The maximum variability occurred for all measures in the 2000s compared to the previous decades (70’s, 80’s and 90’s). The change was less pronounced in the fall season, with the most dramatic change in the day of year for the first Mackerel landed in the spring season, (aka first fish of the year), with a positive linear trend line which could indicate an arrival date of fishes towards later in the year. First day fish landed by year was the only one of the four start/end day of year measures in the figure to be significantly correlated by Spearman Rank ($r_s = 0.366$, $P < .05$). This may be indicative of the importance of wintertime temperature or other climatic parameter as a driver of fish migration timing; though it does not explain the increase in variation over time unless climatic parameters have become increasingly varied over time which is possible. Additionally, the line of best fit for Surfside season data appear to be converging, suggesting a decline in season length (day of first landing of season minus day of last landing of season). The lines of the scatter graph with in a season converge at some points indicating a season length of one day; absence of lines indicated that no King mackerel landings were reported as there were zero fish reported which includes the fall of 2009 through 2011 and the spring and fall of 2012. Spearman Rank Correlation of the length of season by year was significant for both the Spring ($r_s = -.472$, $P < .01$) and Fall season ($r_s = -.525$, $P < .01$).

Day of Year of First and Last Landing of Season by Year

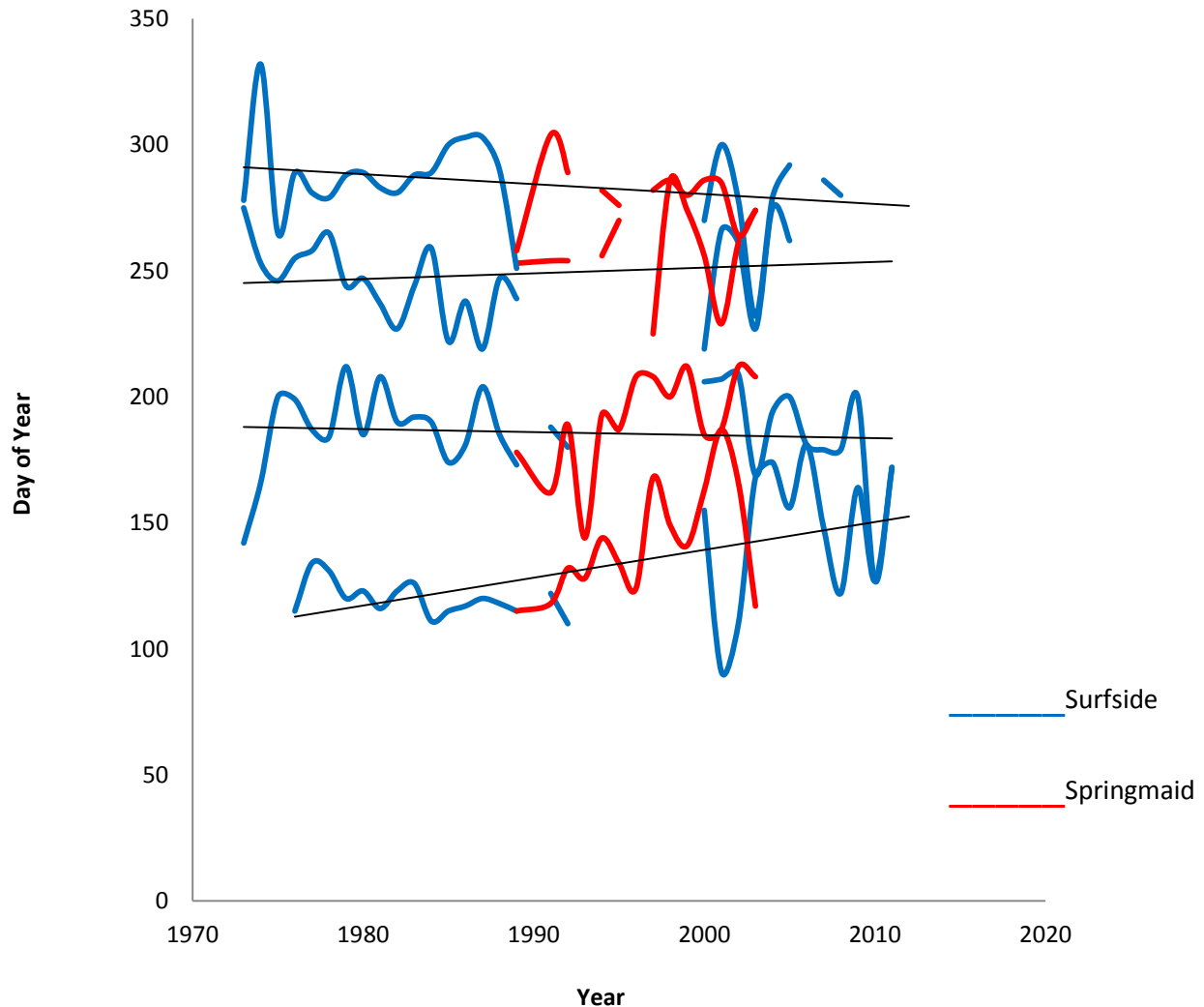


Figure 6. Day of year of first and last landing of season by year. Note: Trendline only fits Surfside data though Springmaid data may be thought of as a measure of interpolation since Springmaid and Surfside landings were significantly correlated

The number of days per year and the number of anglers landing fish per year was tested for significant correlation as a means for gauging angling success. Springmaid and Surfside produced significant negative trends ($p < .05$) for each of these measures by year. Springmaid produced significant trends for the number of fish landed by the number days per year fish landed with a slope of 1.6 and R^2 of .98.

Since it was determined that King mackerel exhibit two distinct runs the number of fish landed per year was divided into the number of fish landed in the "Spring" and "Fall" season (Figure 6) in order to determine how the number of landings varied by year, and between the two seasons within a year.

The number of fish landed with a defined season (#days as described in methods and is different than the length of season used in the calculations from the preceding paragraph) was used to generate an Index of Abundance within that season.

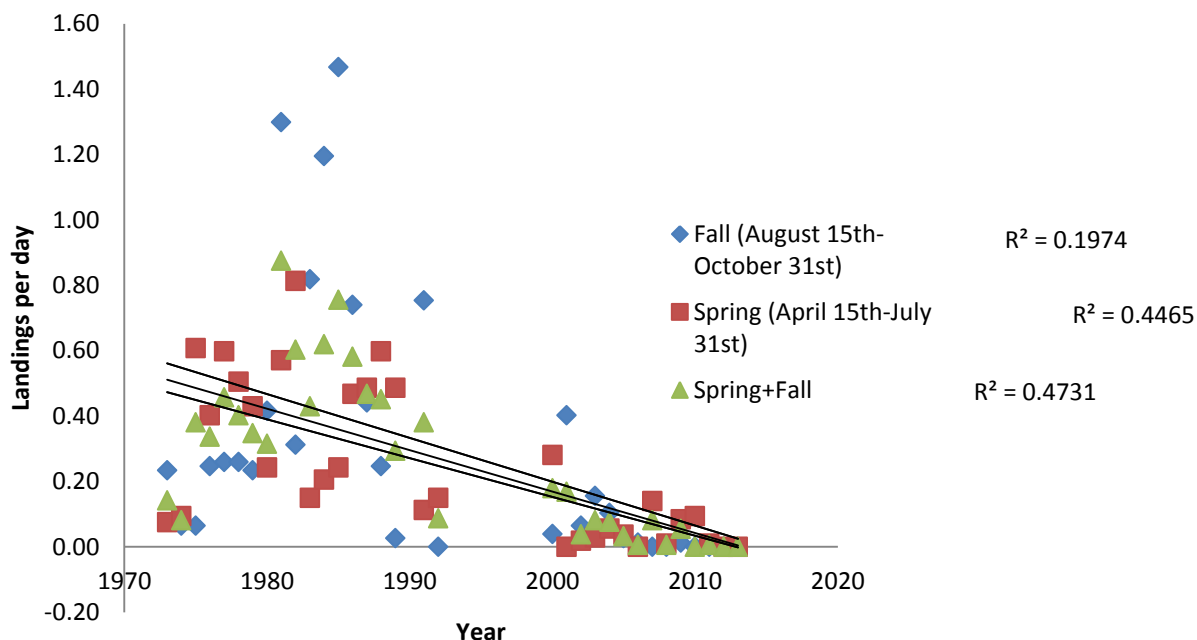


Figure 7. Index of landing abundance for Surfside Pier by year and fishing season.

The resulting index is the number of recorded King mackerel landings per day. All time periods produced negative trendlines spearman rank correlations. The R^2 for each trendline are increased by .1 for by removing 1973, and by another .1 when removing 1974 data as these two years are possibly outliers as the record keeping and interest in the fishery was building at the site. The figure also demonstrates the disparity between fall and spring. Spring versus Fall Index of Abundance was significantly correlated by Spearman Rank ($r_s = .672$, $P < .001$), suggesting that the success of the spring run can be a predictor of the #fish in fall run. Interestingly the fall abundance was a better predictor of the following spring abundance (also significantly correlated $r_s = .621$, $P < .001$) with the linear trendline R^2 increasing to .27 from .076 of the R^2 of spring versus fall of the same calendar year. The R^2 value is still rather low but could suggest that success of the fall run is a better predictor of the success of following Spring run. This makes sense as there is no fishing during the winter months that would contribute reduction in population size due to fishing mortality as occurs during the summer between the spring and fall runs. Spearman rank of Springmailed totals by year was -.434.

The number of landings per year is significantly correlated between the two piers separated by several miles suggesting that the region experiences similar variability. The next step is to figure out how the landings in the study site relate to broader scale estimates of King mackerel landings. To test this, landings were tested against the estimated number of landings for the state of South Carolina and against the number of estimated landing in the South Atlantic. Surfside Landings were significantly correlated (Spearman Rank, $p < .05$) with South Carolina estimates but not with the South Atlantic estimates indicating regional variability of landings on the population wide scale. Possibly due to coordinate shift of the center of mass or range modulation of the King mackerel population.

MRIP estimates of the South Atlantic population of King mackerel show a steady and then increasing landing estimate with a max in 2007. The 2007 level was nearly 50% higher than the next highest landing estimate on record. In 2012 the South Atlantic stock reaches its lowest landing level on record with just 83,000 fish; the total landings at only a quarter of the next lowest year on record in 1989. 2010-2012 reported progressively decreasing numbers, all of which were below the range of all preceding years.

The increase in standard error is likely due to funding issues. Standard errors of similar size occurred during the eighties but did not generate low estimates of total catch and did not exhibit any sort of trend during those years unlike seen during 2007-2012 period where each year is progressively lower than the one before.

Percent of Atlantic Effort targeting King mackerel was approximately 0.5 to 2.6% (SEDAR 16) so CPUE was calculated using that assumption but does not explicitly reflect vessels only targeting King mackerel. Landings apparently experienced a steady rise following the implementation of regulations designed to rebuild the fishery and the stock is generally considered not overfished according to NOAA Fisheries. However, if the number of fish landed per angler trip is plotted the story during the same period may be considered in a different light. While catch has been steady or increasing since the implementation of regulations designed to sustain the fishery the CPUE has been steadily declining (Figure 17). Note CPUE 2007-2012 estimated at 1.6% of total recreational effort based on average of previous 10 years (which varied +/- 0.1%) for Figure 16. King mackerel CPUE experiences a peak in 2007 that corresponds to the peak in landings before mirroring the landing estimate decline.

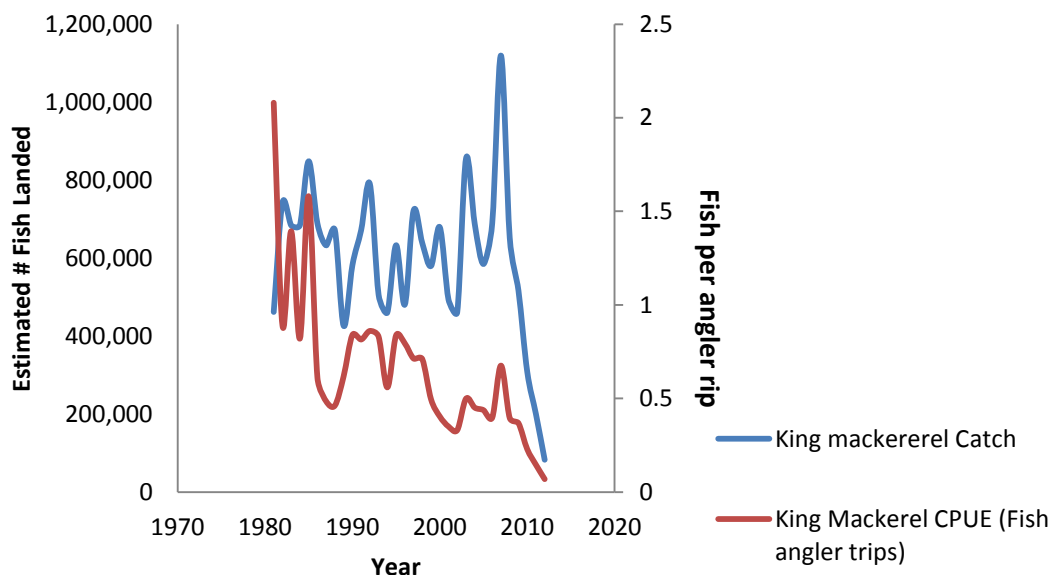


Figure8. MRIP South Atlantic catch in relationship to King mackerel CPUE. Note: CPUE estimate was calculated from assumption that 1.6% of estimated number of angler trips targeted King mackerel.

According the NMFS MRIPS survey, the estimates # of landings experienced the most recent peaks between the years of 2007 and 2009 for southeastern states between North Carolina and Florida.

The shore based landing estimates exhibit similar declines in landings however these data sets have standard errors regularly exceeding 50% for North and South Carolina, regularly 30-40% for Florida. The proportional standard error of an estimate as a percentage of the estimate is calculated as a measure of precision. Estimates with proportional standard errors 50% and higher are considered “highly imprecise” according to MRIP.

Interestingly the decline in landings appears to occur about simultaneously for both the gulf and South Atlantic populations, though to a greater extent for the Atlantic population. Southeastern U.S. King mackerel are managed as two distinct but overlapping populations (assumed 50% overlap based on genealogical studies). NMFS landing estimates of the South Atlantic stock and the Gulf of Mexico stock were roughly equal and significantly correlated (Spearman Rank, $p < .05$) to one another, exhibiting similar annual patterns. The Gulf experienced its maximum landings during the time series (1980-2012) in 2005 with the South Atlantic following in 2007 at 1.1 million fish. One has to hypothesize that whatever is causing the decline may be environmental rather than fishery related since each population is exhibiting similar trends even though managed differently, assuming the two separate population assumption is valid.

There appears to be evidence to support the claims by fishers that recreational landings of King mackerel are declining based on the above analysis. It cannot be determined from the study above whether the decline in landings is related to overfishing and therefore a decline in abundance or to another factor such as adverse environmental conditions that could repel King mackerel to an area outside of the reach of pier anglers. As of 2006 the Gulf Stock was rebuilt and the indicators of stock health were not sufficient to warrant any change in management of the Atlantic Stock as was decided by the management based on the assessment by the South East Data Assessment and Review Process. Still there may have been some uncertainty during the assessment. Statements such as “fished near or above MSY” and the report list the need for better data as one of the main shortfalls of the review process for the fishery. As of 2006 spawning stock biomass was reported to be in decline as of the SEDAR 16 report, though stable landings during the time period since the previous report likely mitigated that concern to some extent.

Though it was not possible to extract a measure of effort from fishing logs, it can be said that total recreational pier effort was roughly stable during the years from 1995 to 2006 as indicated from recreational fishing pass sales records kept by the perspective piers.

There seems to be evidence to support the claims by anglers that recreational landings of King mackerel are declining. It is unclear from the above data whether the decline in landings is related to overfishing. As of 2006 the Gulf Stock was rebuilt and the indicators of stock health were not sufficient to warrant any change in management of the Atlantic Stock as was decided by the South East Data Assessment and Review committee. Still there may have been some uncertainty. Statements such as “fished near or above MSY” and the report lists the need for better data as one of the main shortfalls of the review process for the fishery.

Conclusion

Analysis of recreational pier landing records seem to support the hypothesis that fishing pressure as the weight by year of the largest individual landed species and number of fisher per year was significantly correlated. The number of days fish were landed by year, the total number of anglers landing fish also declined for the time series indicating that fishing success is less profitable for anglers. The relationship with time indicated by King mackerel landings logs seems to support anglers testimony

that numbers of King mackerel are declining. The above study is by no means a comprehensive review of the state of the fishery but are the results from a non, CPUE privately-held recreational pier fishing landing logs, from which evidence for declines can be interpreted from. Declines in landings at the study area do not necessarily mean that there is declines in population abundance and could reflect an avoidance of the study area do to other factors such as environmental conditions. The results from the King mackerel data sets are convincing enough to warrant further investigation.

Works Cited

Godcharles, M. F., Murphy, M.D. 1986. Species profiles: Life history and environmental requirements of coastal fishes and invertebrates (South Florida): King mackerel and Spanish mackerel. [*Scomberomorus cavalla*; *Scomberomorus maculatus*]. *Florida Department of Natural Resources*. Technical report TR-EL-82-4/82-11-58.

Sanger, D., D. Hernandez, S. Libes, G. Voulgaris, B. Davis, E. Smith, R. Shuford, D. Porter, E. Koepfler, and J. Bennett. 2010. A Case History of the Science and Management Collaboration in Understanding Hypoxia Events in Long Bay, USA. *Environmental Management*. *Environmental Management*. 45:340-350.

Sanger, Denise and DeVoe, Richard and Hernandez, Debra (2010) Long Bay hypoxia study: A collaborative and multidisciplinary approach. In: *Shifting Shorelines: Adapting to the Future*, The 22nd International Conference of The Coastal Society, June 13-16, 2010, Wilmington, North Carolina.

Appendix

Appendix 1. Surfside and Springmaid Pier King mackerel Landings. Note that angler names have been whited out in the document due to privacy concerns.

Site	Year	Date	Angler Name	Weight (kg)
Surfside	1973	5/6/1973		5.556502
Surfside	1973	5/6/1973		7.0023265
Surfside	1973	5/6/1973		10.659412
Surfside	1973	5/6/1973		15.422128
Surfside	1973	5/7/1973		6.917278
Surfside	1973	5/7/1973		7.257472
Surfside	1973	5/12/1973		6.80388
Surfside	1973	5/22/1973		5.783298
Surfside	1973	10/2/1973		2.26796
Surfside	1973	10/2/1973		6.80388
Surfside	1973	10/2/1973		7.540967
Surfside	1973	10/2/1973		7.8528115
Surfside	1973	10/2/1973		10.6877615
Surfside	1973	10/3/1973		4.082328
Surfside	1973	10/3/1973		5.159609
Surfside	1973	10/3/1973		5.2446575
Surfside	1973	10/3/1973		8.221355
Surfside	1973	10/3/1973		8.391452
Surfside	1973	10/3/1973		9.412034
Surfside	1973	10/3/1973		10.262519

Surfside	1973	10/3/1973	13.154168
Surfside	1973	10/4/1973	4.876114
Surfside	1973	10/4/1973	5.0745605
Surfside	1973	10/4/1973	5.6699
Surfside	1973	10/4/1973	5.726599
Surfside	1973	10/5/1973	6.180191
Surfside	1974	5/1/1974	7.711064
Surfside	1974	5/2/1974	7.881161
Surfside	1974	5/2/1974	8.6465975
Surfside	1974	5/10/1974	6.8322295
Surfside	1974	5/14/1974	6.6054335
Surfside	1974	5/24/1974	6.123492
Surfside	1974	5/24/1974	10.9712565
Surfside	1974	6/7/1974	4.7910655
Surfside	1974	6/12/1974	4.309124
Surfside	1974	6/15/1974	3.515338
Surfside	1974	9/10/1974	11.679994
Surfside	1974	9/11/1974	9.695529
Surfside	1974	9/11/1974	10.432616
Surfside	1974	9/12/1974	5.4714535
Surfside	1974	9/12/1974	6.23689
Surfside	1974	9/12/1974	6.577084
Surfside	1974	9/12/1974	8.50485
Surfside	1974	9/13/1974	7.824462
Surfside	1974	9/13/1974	11.453198
Surfside	1974	9/13/1974	12.133586
Surfside	1974	9/14/1974	9.865626
Surfside	1974	9/17/1974	4.989512
Surfside	1974	9/18/1974	5.556502
Surfside	1974	9/20/1974	6.463686
Surfside	1974	11/28/1974	9.07184
Surfside	1975	5/1/1975	7.257472
Surfside	1975	5/1/1975	11.283101
Surfside	1975	5/6/1975	6.066793
Surfside	1975	5/6/1975	7.37087
Surfside	1975	5/6/1975	10.319218
Surfside	1975	5/11/1975	5.5281525
Surfside	1975	5/11/1975	8.50485
Surfside	1975	5/12/1975	4.762716
Surfside	1975	5/12/1975	5.4147545
Surfside	1975	5/12/1975	5.4147545
Surfside	1975	5/12/1975	6.180191
Surfside	1975	5/12/1975	6.180191
Surfside	1975	5/12/1975	6.293589
Surfside	1975	5/12/1975	6.463686
Surfside	1975	5/12/1975	6.463686
Surfside	1975	5/12/1975	6.917278
Surfside	1975	5/12/1975	7.2291225
Surfside	1975	5/12/1975	8.8733935
Surfside	1975	5/12/1975	8.8733935
Surfside	1975	5/13/1975	8.334753
Surfside	1975	5/14/1975	4.195726
Surfside	1975	5/14/1975	6.066793
Surfside	1975	5/14/1975	6.123492
Surfside	1975	5/14/1975	7.200773

Surfside	1975	5/14/1975	8.278054
Surfside	1975	5/14/1975	8.618248
Surfside	1975	5/16/1975	10.829509
Surfside	1975	5/17/1975	5.0178615
Surfside	1975	5/17/1975	10.0640725
Surfside	1975	5/18/1975	4.876114
Surfside	1975	5/18/1975	5.10291
Surfside	1975	5/18/1975	5.329706
Surfside	1975	5/18/1975	5.783298
Surfside	1975	5/18/1975	5.953395
Surfside	1975	5/18/1975	7.5126175
Surfside	1975	5/18/1975	7.9662095
Surfside	1975	5/18/1975	8.1930055
Surfside	1975	5/18/1975	8.901743
Surfside	1975	5/18/1975	11.396499
Surfside	1975	5/19/1975	6.463686
Surfside	1975	5/20/1975	13.437663
Surfside	1975	5/21/1975	5.896696
Surfside	1975	5/22/1975	7.540967
Surfside	1975	5/26/1975	4.932813
Surfside	1975	5/26/1975	6.520385
Surfside	1975	5/26/1975	7.087375
Surfside	1975	5/26/1975	7.257472
Surfside	1975	5/27/1975	7.427569
Surfside	1975	5/27/1975	7.7961125
Surfside	1975	5/28/1975	7.93786
Surfside	1975	5/28/1975	9.07184
Surfside	1975	5/28/1975	12.927372
Surfside	1975	5/29/1975	5.4714535
Surfside	1975	5/29/1975	5.499803
Surfside	1975	5/29/1975	6.180191
Surfside	1975	5/29/1975	8.4198015
Surfside	1975	5/29/1975	9.412034
Surfside	1975	5/29/1975	16.4710595
Surfside	1975	6/2/1975	12.2753335
Surfside	1975	6/3/1975	7.030676
Surfside	1975	6/8/1975	11.226402
Surfside	1975	6/16/1975	8.901743
Surfside	1975	6/26/1975	7.5693165
Surfside	1975	6/30/1975	8.8166945
Surfside	1975	7/2/1975	14.855138
Surfside	1975	7/19/1975	17.9452335
Surfside	1975	9/3/1975	8.448151
Surfside	1975	9/3/1975	11.509897
Surfside	1975	9/8/1975	10.489315
Surfside	1975	9/22/1975	5.6699
Surfside	1976	4/24/1976	6.747181
Surfside	1976	4/29/1976	6.577084
Surfside	1976	5/5/1976	5.443104
Surfside	1976	5/5/1976	11.3398
Surfside	1976	5/6/1976	6.180191
Surfside	1976	5/9/1976	5.329706
Surfside	1976	5/9/1976	8.221355
Surfside	1976	5/9/1976	9.752228
Surfside	1976	5/9/1976	10.149121

Surfside	1976	5/10/1976	6.917278
Surfside	1976	5/10/1976	7.7394135
Surfside	1976	5/11/1976	5.8116475
Surfside	1976	5/11/1976	6.463686
Surfside	1976	5/11/1976	7.484268
Surfside	1976	5/12/1976	6.80388
Surfside	1976	5/13/1976	4.706017
Surfside	1976	5/13/1976	4.7910655
Surfside	1976	5/13/1976	5.329706
Surfside	1976	5/13/1976	5.386405
Surfside	1976	5/13/1976	5.443104
Surfside	1976	5/13/1976	6.747181
Surfside	1976	5/13/1976	12.133586
Surfside	1976	5/14/1976	2.4097075
Surfside	1976	5/14/1976	5.159609
Surfside	1976	5/14/1976	5.1879585
Surfside	1976	5/14/1976	5.499803
Surfside	1976	5/14/1976	5.613201
Surfside	1976	5/14/1976	7.030676
Surfside	1976	5/14/1976	7.030676
Surfside	1976	5/14/1976	7.484268
Surfside	1976	5/20/1976	3.912231
Surfside	1976	5/20/1976	5.443104
Surfside	1976	5/20/1976	6.8322295
Surfside	1976	5/20/1976	6.973977
Surfside	1976	6/6/1976	6.010094
Surfside	1976	6/10/1976	7.540967
Surfside	1976	6/12/1976	8.674947
Surfside	1976	6/13/1976	5.386405
Surfside	1976	6/13/1976	10.262519
Surfside	1976	6/18/1976	7.93786
Surfside	1976	6/24/1976	8.278054
Surfside	1976	6/26/1976	6.010094
Surfside	1976	6/28/1976	10.602713
Surfside	1976	6/29/1976	7.994559
Surfside	1976	7/16/1976	9.8372765
Surfside	1976	7/17/1976	4.7910655
Surfside	1976	9/11/1976	7.484268
Surfside	1976	9/19/1976	7.597666
Surfside	1976	9/23/1976	4.989512
Surfside	1976	9/23/1976	6.463686
Surfside	1976	9/23/1976	7.93786
Surfside	1976	10/2/1976	9.865626
Surfside	1976	10/4/1976	
Surfside	1976	10/5/1976	8.391452
Surfside	1976	10/7/1976	4.479221
Surfside	1976	10/13/1976	8.7599955
Surfside	1976	10/13/1976	9.63883
Surfside	1976	10/13/1976	10.319218
Surfside	1976	10/13/1976	13.721158
Surfside	1976	10/14/1976	4.53592
Surfside	1976	10/14/1976	6.293589
Surfside	1976	10/14/1976	8.164656
Surfside	1976	10/15/1976	5.386405
Surfside	1976	10/15/1976	5.5281525

Surfside	1976	10/15/1976	5.783298
Surfside	1976	10/15/1976	11.5382465
Surfside	1977	5/14/1977	6.577084
Surfside	1977	5/15/1977	8.788345
Surfside	1977	5/18/1977	7.030676
Surfside	1977	5/18/1977	8.107957
Surfside	1977	5/19/1977	6.180191
Surfside	1977	5/19/1977	10.77281
Surfside	1977	5/20/1977	4.989512
Surfside	1977	5/20/1977	7.1157245
Surfside	1977	5/21/1977	4.876114
Surfside	1977	5/22/1977	4.592619
Surfside	1977	5/25/1977	5.443104
Surfside	1977	5/26/1977	6.180191
Surfside	1977	5/26/1977	8.107957
Surfside	1977	5/27/1977	5.3013565
Surfside	1977	5/27/1977	7.37087
Surfside	1977	5/29/1977	4.762716
Surfside	1977	5/29/1977	4.762716
Surfside	1977	5/29/1977	5.6699
Surfside	1977	5/29/1977	8.901743
Surfside	1977	5/30/1977	3.061746
Surfside	1977	5/30/1977	4.082328
Surfside	1977	5/31/1977	3.742134
Surfside	1977	6/4/1977	6.80388
Surfside	1977	6/4/1977	8.561549
Surfside	1977	6/8/1977	2.948348
Surfside	1977	6/8/1977	6.010094
Surfside	1977	6/8/1977	6.80388
Surfside	1977	6/8/1977	10.375917
Surfside	1977	6/10/1977	3.458639
Surfside	1977	6/10/1977	6.350288
Surfside	1977	6/10/1977	6.80388
Surfside	1977	6/11/1977	4.195726
Surfside	1977	6/11/1977	9.695529
Surfside	1977	6/13/1977	5.6699
Surfside	1977	6/13/1977	11.963489
Surfside	1977	6/14/1977	4.649318
Surfside	1977	6/14/1977	6.747181
Surfside	1977	6/14/1977	6.747181
Surfside	1977	6/19/1977	8.618248
Surfside	1977	6/22/1977	9.015141
Surfside	1977	6/23/1977	3.061746
Surfside	1977	6/23/1977	3.912231
Surfside	1977	6/23/1977	7.427569
Surfside	1977	6/24/1977	5.273007
Surfside	1977	6/24/1977	5.329706
Surfside	1977	6/24/1977	5.3580555
Surfside	1977	6/24/1977	5.386405
Surfside	1977	6/24/1977	7.881161
Surfside	1977	6/24/1977	8.334753
Surfside	1977	6/24/1977	10.659412
Surfside	1977	6/24/1977	12.6155275
Surfside	1977	6/25/1977	5.556502
Surfside	1977	6/25/1977	5.783298

Surfside	1977	6/25/1977	6.350288
Surfside	1977	6/25/1977	7.824462
Surfside	1977	6/26/1977	6.80388
Surfside	1977	6/27/1977	5.216308
Surfside	1977	6/27/1977	5.726599
Surfside	1977	6/28/1977	4.762716
Surfside	1977	6/28/1977	6.917278
Surfside	1977	6/28/1977	10.716111
Surfside	1977	6/29/1977	7.7961125
Surfside	1977	7/3/1977	7.3992195
Surfside	1977	7/4/1977	8.334753
Surfside	1977	7/6/1977	8.391452
Surfside	1977	9/15/1977	10.886208
Surfside	1977	9/19/1977	5.443104
Surfside	1977	9/30/1977	9.752228
Surfside	1977	9/30/1977	10.6877615
Surfside	1977	10/1/1977	10.8011595
Surfside	1977	10/2/1977	7.030676
Surfside	1977	10/4/1977	6.80388
Surfside	1977	10/4/1977	7.030676
Surfside	1977	10/4/1977	8.164656
Surfside	1977	10/5/1977	7.314171
Surfside	1977	10/5/1977	8.788345
Surfside	1977	10/5/1977	9.128539
Surfside	1977	10/6/1977	4.309124
Surfside	1977	10/6/1977	5.443104
Surfside	1977	10/6/1977	9.525432
Surfside	1977	10/6/1977	9.7805775
Surfside	1977	10/6/1977	12.076887
Surfside	1977	10/7/1977	8.958442
Surfside	1977	10/7/1977	10.035723
Surfside	1977	10/8/1977	11.90679
Surfside	1978	5/11/1978	6.180191
Surfside	1978	5/11/1978	6.520385
Surfside	1978	5/11/1978	6.6621325
Surfside	1978	5/12/1978	7.9095105
Surfside	1978	5/20/1978	8.107957
Surfside	1978	5/20/1978	11.0279555
Surfside	1978	5/27/1978	5.4147545
Surfside	1978	6/12/1978	4.5642695
Surfside	1978	6/12/1978	6.010094
Surfside	1978	6/14/1978	5.216308
Surfside	1978	6/14/1978	5.953395
Surfside	1978	6/14/1978	6.917278
Surfside	1978	6/14/1978	9.015141
Surfside	1978	6/20/1978	10.6310625
Surfside	1978	6/21/1978	6.520385
Surfside	1978	6/23/1978	5.783298
Surfside	1978	6/23/1978	7.257472
Surfside	1978	6/23/1978	7.37087
Surfside	1978	6/23/1978	7.4559185
Surfside	1978	6/23/1978	8.221355
Surfside	1978	6/23/1978	8.561549
Surfside	1978	6/24/1978	6.406987
Surfside	1978	6/25/1978	4.479221

Surfside	1978	6/25/1978	5.4714535
Surfside	1978	6/25/1978	6.123492
Surfside	1978	6/25/1978	8.107957
Surfside	1978	6/25/1978	8.845044
Surfside	1978	6/26/1978	6.123492
Surfside	1978	6/26/1978	15.138633
Surfside	1978	6/27/1978	8.391452
Surfside	1978	6/28/1978	5.953395
Surfside	1978	6/28/1978	6.123492
Surfside	1978	6/28/1978	7.314171
Surfside	1978	6/28/1978	7.37087
Surfside	1978	6/29/1978	4.7343665
Surfside	1978	6/29/1978	7.824462
Surfside	1978	6/29/1978	8.221355
Surfside	1978	6/29/1978	9.185238
Surfside	1978	6/30/1978	4.195726
Surfside	1978	6/30/1978	4.4508715
Surfside	1978	6/30/1978	4.479221
Surfside	1978	6/30/1978	5.273007
Surfside	1978	6/30/1978	5.499803
Surfside	1978	6/30/1978	5.556502
Surfside	1978	6/30/1978	5.613201
Surfside	1978	6/30/1978	5.6699
Surfside	1978	6/30/1978	9.525432
Surfside	1978	6/30/1978	10.035723
Surfside	1978	6/30/1978	10.829509
Surfside	1978	7/1/1978	3.40194
Surfside	1978	7/1/1978	12.360382
Surfside	1978	7/2/1978	4.082328
Surfside	1978	7/2/1978	8.164656
Surfside	1978	7/2/1978	8.5331995
Surfside	1978	7/3/1978	6.123492
Surfside	1978	9/22/1978	7.427569
Surfside	1978	9/22/1978	7.7961125
Surfside	1978	9/22/1978	9.582131
Surfside	1978	10/2/1978	5.896696
Surfside	1978	10/3/1978	6.520385
Surfside	1978	10/3/1978	6.973977
Surfside	1978	10/3/1978	7.93786
Surfside	1978	10/4/1978	7.144074
Surfside	1978	10/4/1978	8.674947
Surfside	1978	10/4/1978	10.5743635
Surfside	1978	10/5/1978	3.628736
Surfside	1978	10/5/1978	4.762716
Surfside	1978	10/5/1978	5.10291
Surfside	1978	10/5/1978	5.896696
Surfside	1978	10/5/1978	6.180191
Surfside	1978	10/5/1978	6.80388
Surfside	1978	10/5/1978	8.50485
Surfside	1978	10/5/1978	9.07184
Surfside	1978	10/6/1978	6.7755305
Surfside	1978	10/6/1978	7.2291225
Surfside	1979	4/30/1979	8.051258
Surfside	1979	5/17/1979	6.3786375
Surfside	1979	5/20/1979	5.329706

Surfside	1979	5/20/1979	7.257472
Surfside	1979	5/20/1979	7.767763
Surfside	1979	5/21/1979	5.443104
Surfside	1979	5/21/1979	6.066793
Surfside	1979	5/21/1979	7.37087
Surfside	1979	5/23/1979	7.540967
Surfside	1979	5/30/1979	9.468733
Surfside	1979	6/3/1979	3.5436875
Surfside	1979	6/3/1979	5.329706
Surfside	1979	6/3/1979	10.432616
Surfside	1979	6/5/1979	7.144074
Surfside	1979	6/5/1979	8.9867915
Surfside	1979	6/6/1979	11.679994
Surfside	1979	6/7/1979	3.8271825
Surfside	1979	6/9/1979	10.3135481
Surfside	1979	6/11/1979	9.808927
Surfside	1979	6/23/1979	10.716111
Surfside	1979	6/29/1979	4.53592
Surfside	1979	6/29/1979	4.762716
Surfside	1979	6/29/1979	7.030676
Surfside	1979	6/29/1979	7.030676
Surfside	1979	6/29/1979	8.448151
Surfside	1979	6/30/1979	4.082328
Surfside	1979	6/30/1979	6.5487345
Surfside	1979	6/30/1979	6.860579
Surfside	1979	7/3/1979	5.6982495
Surfside	1979	7/4/1979	3.742134
Surfside	1979	7/5/1979	4.989512
Surfside	1979	7/5/1979	5.556502
Surfside	1979	7/5/1979	5.556502
Surfside	1979	7/5/1979	5.6415505
Surfside	1979	7/5/1979	6.180191
Surfside	1979	7/10/1979	8.731646
Surfside	1979	7/11/1979	7.5126175
Surfside	1979	7/13/1979	10.942907
Surfside	1979	7/14/1979	4.819415
Surfside	1979	7/14/1979	7.484268
Surfside	1979	7/14/1979	11.963489
Surfside	1979	7/15/1979	
Surfside	1979	7/16/1979	6.123492
Surfside	1979	7/16/1979	6.5487345
Surfside	1979	7/16/1979	7.9662095
Surfside	1979	7/16/1979	8.845044
Surfside	1979	7/16/1979	12.643877
Surfside	1979	7/22/1979	7.93786
Surfside	1979	7/31/1979	6.633783
Surfside	1979	9/1/1979	9.07184
Surfside	1979	9/28/1979	5.896696
Surfside	1979	9/28/1979	6.0951425
Surfside	1979	9/28/1979	7.881161
Surfside	1979	9/29/1979	7.314171
Surfside	1979	9/29/1979	7.540967
Surfside	1979	9/29/1979	9.752228
Surfside	1979	9/29/1979	14.401546
Surfside	1979	9/30/1979	6.010094

Surfside	1979	9/30/1979	7.37087
Surfside	1979	9/30/1979	7.8528115
Surfside	1979	9/30/1979	12.870673
Surfside	1979	10/1/1979	6.350288
Surfside	1979	10/13/1979	6.463686
Surfside	1979	10/13/1979	7.144074
Surfside	1979	10/14/1979	6.860579
Surfside	1979	10/14/1979	11.963489
Surfside	1979	10/15/1979	10.886208
Surfside	1980	5/2/1980	7.597666
Surfside	1980	5/10/1980	5.386405
Surfside	1980	5/22/1980	4.932813
Surfside	1980	5/22/1980	5.896696
Surfside	1980	5/22/1980	6.80388
Surfside	1980	5/22/1980	7.881161
Surfside	1980	5/28/1980	4.082328
Surfside	1980	5/28/1980	5.2843468
Surfside	1980	5/28/1980	6.577084
Surfside	1980	5/30/1980	4.53592
Surfside	1980	5/30/1980	7.087375
Surfside	1980	6/4/1980	5.613201
Surfside	1980	6/5/1980	6.066793
Surfside	1980	6/19/1980	8.50485
Surfside	1980	6/20/1980	4.53592
Surfside	1980	6/20/1980	5.896696
Surfside	1980	6/23/1980	5.046211
Surfside	1980	6/23/1980	7.200773
Surfside	1980	6/23/1980	7.427569
Surfside	1980	6/25/1980	10.6310625
Surfside	1980	6/27/1980	6.917278
Surfside	1980	6/28/1980	6.520385
Surfside	1980	7/1/1980	9.128539
Surfside	1980	7/2/1980	4.762716
Surfside	1980	7/2/1980	4.9611625
Surfside	1980	7/2/1980	6.350288
Surfside	1980	7/3/1980	6.747181
Surfside	1980	8/9/1980	2.8066005
Surfside	1980	9/3/1980	4.706017
Surfside	1980	9/6/1980	9.525432
Surfside	1980	9/10/1980	9.979024
Surfside	1980	9/13/1980	5.783298
Surfside	1980	9/23/1980	5.2446575
Surfside	1980	9/25/1980	5.6415505
Surfside	1980	10/5/1980	7.597666
Surfside	1980	10/5/1980	7.994559
Surfside	1980	10/7/1980	5.216308
Surfside	1980	10/7/1980	6.463686
Surfside	1980	10/7/1980	6.577084
Surfside	1980	10/8/1980	
Surfside	1980	10/8/1980	4.309124
Surfside	1980	10/8/1980	5.443104
Surfside	1980	10/8/1980	7.711064
Surfside	1980	10/8/1980	8.845044
Surfside	1980	10/8/1980	9.1001895
Surfside	1980	10/8/1980	10.092422

Surfside	1980	10/8/1980	#VALUE!
Surfside	1980	10/9/1980	5.443104
Surfside	1980	10/9/1980	7.994559
Surfside	1980	10/10/1980	7.824462
Surfside	1980	10/11/1980	7.824462
Surfside	1980	10/11/1980	8.051258
Surfside	1980	10/12/1980	9.298636
Surfside	1980	10/13/1980	5.3580555
Surfside	1980	10/14/1980	5.10291
Surfside	1980	10/14/1980	6.066793
Surfside	1980	10/14/1980	8.051258
Surfside	1980	10/14/1980	#VALUE!
Surfside	1980	10/15/1980	
Surfside	1980	10/15/1980	0
Surfside	1980	10/15/1980	4.422522
Surfside	1980	10/15/1980	6.406987
Surfside	1980	10/15/1980	7.597666
Surfside	1980	10/15/1980	7.711064
Surfside	1981	4/26/1981	3.175144
Surfside	1981	5/3/1981	4.989512
Surfside	1981	5/6/1981	5.613201
Surfside	1981	5/6/1981	9.355335
Surfside	1981	5/13/1981	4.365823
Surfside	1981	5/13/1981	5.10291
Surfside	1981	5/13/1981	5.1312595
Surfside	1981	5/13/1981	8.221355
Surfside	1981	5/14/1981	4.139027
Surfside	1981	5/16/1981	3.0333965
Surfside	1981	5/18/1981	5.6699
Surfside	1981	5/18/1981	7.6260155
Surfside	1981	5/22/1981	8.107957
Surfside	1981	5/23/1981	4.6209685
Surfside	1981	5/23/1981	4.989512
Surfside	1981	5/23/1981	5.4714535
Surfside	1981	5/23/1981	7.427569
Surfside	1981	5/23/1981	7.484268
Surfside	1981	5/24/1981	5.556502
Surfside	1981	5/26/1981	5.10291
Surfside	1981	5/26/1981	5.1879585
Surfside	1981	5/26/1981	5.2446575
Surfside	1981	5/26/1981	7.257472
Surfside	1981	5/29/1981	7.484268
Surfside	1981	5/30/1981	4.6776675
Surfside	1981	5/30/1981	8.50485
Surfside	1981	6/1/1981	5.953395
Surfside	1981	6/1/1981	6.350288
Surfside	1981	6/15/1981	3.96893
Surfside	1981	6/15/1981	4.025629
Surfside	1981	6/15/1981	4.8477645
Surfside	1981	6/15/1981	4.932813
Surfside	1981	6/16/1981	2.721552
Surfside	1981	6/16/1981	4.762716
Surfside	1981	6/16/1981	6.066793
Surfside	1981	6/16/1981	6.860579
Surfside	1981	6/16/1981	6.917278

Surfside	1981	6/16/1981	7.087375
Surfside	1981	6/16/1981	7.37087
Surfside	1981	6/17/1981	2.9766975
Surfside	1981	6/19/1981	8.051258
Surfside	1981	7/7/1981	5.216308
Surfside	1981	7/9/1981	6.4920355
Surfside	1981	7/10/1981	5.443104
Surfside	1981	7/10/1981	7.711064
Surfside	1981	7/12/1981	4.932813
Surfside	1981	7/12/1981	5.3580555
Surfside	1981	7/12/1981	6.066793
Surfside	1981	7/12/1981	6.577084
Surfside	1981	7/12/1981	8.164656
Surfside	1981	7/12/1981	11.6516445
Surfside	1981	7/13/1981	4.5075705
Surfside	1981	7/13/1981	5.613201
Surfside	1981	7/13/1981	5.9250455
Surfside	1981	7/13/1981	6.577084
Surfside	1981	7/13/1981	7.030676
Surfside	1981	7/13/1981	7.314171
Surfside	1981	7/13/1981	8.278054
Surfside	1981	7/13/1981	13.097469
Surfside	1981	7/16/1981	4.53592
Surfside	1981	7/23/1981	13.437663
Surfside	1981	7/27/1981	7.0023265
Surfside	1981	8/25/1981	6.80388
Surfside	1981	8/27/1981	14.514944
Surfside	1981	9/2/1981	4.592619
Surfside	1981	9/2/1981	6.917278
Surfside	1981	9/3/1981	5.10291
Surfside	1981	9/3/1981	6.520385
Surfside	1981	9/3/1981	7.7961125
Surfside	1981	9/3/1981	8.618248
Surfside	1981	9/3/1981	8.901743
Surfside	1981	9/3/1981	11.793392
Surfside	1981	9/3/1981	12.076887
Surfside	1981	9/4/1981	4.365823
Surfside	1981	9/4/1981	6.180191
Surfside	1981	9/4/1981	6.633783
Surfside	1981	9/4/1981	6.747181
Surfside	1981	9/4/1981	7.824462
Surfside	1981	9/4/1981	7.93786
Surfside	1981	9/4/1981	10.319218
Surfside	1981	9/5/1981	5.499803
Surfside	1981	9/5/1981	6.010094
Surfside	1981	9/5/1981	6.633783
Surfside	1981	9/5/1981	7.881161
Surfside	1981	9/5/1981	12.246984
Surfside	1981	9/10/1981	4.989512
Surfside	1981	9/10/1981	5.10291
Surfside	1981	9/17/1981	5.726599
Surfside	1981	9/17/1981	10.7444605
Surfside	1981	9/21/1981	6.123492
Surfside	1981	9/21/1981	9.7238785
Surfside	1981	9/22/1981	5.499803

Surfside	1981	9/22/1981	5.726599
Surfside	1981	9/22/1981	7.030676
Surfside	1981	9/23/1981	5.896696
Surfside	1981	9/24/1981	#VALUE!
Surfside	1981	9/25/1981	3.912231
Surfside	1981	9/25/1981	4.8477645
Surfside	1981	9/25/1981	5.216308
Surfside	1981	9/25/1981	5.443104
Surfside	1981	9/25/1981	6.010094
Surfside	1981	9/25/1981	6.860579
Surfside	1981	9/25/1981	7.3425205
Surfside	1981	9/25/1981	8.107957
Surfside	1981	9/25/1981	8.391452
Surfside	1981	9/25/1981	10.6877615
Surfside	1981	9/25/1981	11.736693
Surfside	1981	9/26/1981	4.592619
Surfside	1981	9/27/1981	4.309124
Surfside	1981	9/27/1981	4.989512
Surfside	1981	9/27/1981	5.273007
Surfside	1981	9/27/1981	5.329706
Surfside	1981	9/27/1981	5.3580555
Surfside	1981	9/27/1981	6.350288
Surfside	1981	9/27/1981	6.80388
Surfside	1981	9/27/1981	6.860579
Surfside	1981	9/27/1981	7.200773
Surfside	1981	9/27/1981	7.881161
Surfside	1981	9/27/1981	8.164656
Surfside	1981	9/27/1981	8.50485
Surfside	1981	9/27/1981	8.618248
Surfside	1981	9/27/1981	8.7599955
Surfside	1981	9/27/1981	9.185238
Surfside	1981	9/28/1981	4.989512
Surfside	1981	9/28/1981	5.216308
Surfside	1981	9/28/1981	5.3580555
Surfside	1981	9/28/1981	5.499803
Surfside	1981	9/28/1981	5.783298
Surfside	1981	9/28/1981	6.4920355
Surfside	1981	9/28/1981	7.37087
Surfside	1981	9/30/1981	4.876114
Surfside	1981	9/30/1981	5.953395
Surfside	1981	9/30/1981	6.293589
Surfside	1981	9/30/1981	6.406987
Surfside	1981	9/30/1981	7.711064
Surfside	1981	9/30/1981	12.076887
Surfside	1981	10/4/1981	8.278054
Surfside	1981	10/5/1981	5.896696
Surfside	1981	10/5/1981	6.180191
Surfside	1981	10/5/1981	8.618248
Surfside	1981	10/5/1981	9.6104805
Surfside	1981	10/6/1981	7.93786
Surfside	1981	10/6/1981	8.561549
Surfside	1981	10/7/1981	5.3013565
Surfside	1981	10/7/1981	5.613201
Surfside	1981	10/7/1981	6.066793
Surfside	1981	10/7/1981	6.9456275

Surfside	1981	10/7/1981	8.674947
Surfside	1981	10/8/1981	4.989512
Surfside	1981	10/8/1981	6.123492
Surfside	1981	10/8/1981	6.350288
Surfside	1981	10/8/1981	6.8889285
Surfside	1981	10/8/1981	8.618248
Surfside	1981	10/8/1981	10.0640725
Surfside	1981	10/8/1981	12.020188
Surfside	1981	10/8/1981	13.891255
Surfside	1981	10/9/1981	5.499803
Surfside	1981	10/9/1981	6.010094
Surfside	1981	10/9/1981	6.690482
Surfside	1981	10/9/1981	6.690482
Surfside	1981	10/9/1981	8.618248
Surfside	1981	10/10/1981	6.5090452
Surfside	1981	10/10/1981	11.65051052
Surfside	1982	5/3/1982	5.6699
Surfside	1982	5/3/1982	6.350288
Surfside	1982	5/3/1982	7.0023265
Surfside	1982	5/4/1982	6.6621325
Surfside	1982	5/4/1982	10.035723
Surfside	1982	5/4/1982	11.6516445
Surfside	1982	5/6/1982	6.3786375
Surfside	1982	5/8/1982	6.010094
Surfside	1982	5/8/1982	7.540967
Surfside	1982	5/9/1982	5.9817445
Surfside	1982	5/9/1982	8.3631025
Surfside	1982	5/9/1982	8.674947
Surfside	1982	5/10/1982	4.876114
Surfside	1982	5/10/1982	5.7549485
Surfside	1982	5/10/1982	6.066793
Surfside	1982	5/10/1982	6.406987
Surfside	1982	5/10/1982	6.973977
Surfside	1982	5/10/1982	7.2858215
Surfside	1982	5/10/1982	7.9662095
Surfside	1982	5/11/1982	5.443104
Surfside	1982	5/11/1982	5.6699
Surfside	1982	5/11/1982	6.2312201
Surfside	1982	5/11/1982	7.37087
Surfside	1982	5/11/1982	7.767763
Surfside	1982	5/11/1982	7.824462
Surfside	1982	5/11/1982	8.107957
Surfside	1982	5/12/1982	5.216308
Surfside	1982	5/12/1982	5.443104
Surfside	1982	5/12/1982	6.123492
Surfside	1982	5/13/1982	4.762716
Surfside	1982	5/13/1982	4.989512
Surfside	1982	5/13/1982	5.159609
Surfside	1982	5/13/1982	5.9817445
Surfside	1982	5/13/1982	6.80388
Surfside	1982	5/13/1982	7.030676
Surfside	1982	5/13/1982	8.618248
Surfside	1982	5/14/1982	4.989512
Surfside	1982	5/14/1982	5.273007
Surfside	1982	5/14/1982	10.1774705

Surfside	1982	5/15/1982	5.046211
Surfside	1982	5/15/1982	8.051258
Surfside	1982	5/17/1982	6.180191
Surfside	1982	5/17/1982	8.278054
Surfside	1982	5/18/1982	3.458639
Surfside	1982	5/18/1982	3.855532
Surfside	1982	5/18/1982	4.479221
Surfside	1982	5/18/1982	4.7910655
Surfside	1982	5/18/1982	5.443104
Surfside	1982	5/18/1982	5.896696
Surfside	1982	5/18/1982	5.9817445
Surfside	1982	5/18/1982	6.010094
Surfside	1982	5/18/1982	6.066793
Surfside	1982	5/18/1982	6.1518415
Surfside	1982	5/18/1982	6.1518415
Surfside	1982	5/18/1982	6.1745211
Surfside	1982	5/18/1982	6.180191
Surfside	1982	5/18/1982	6.5487345
Surfside	1982	5/18/1982	6.747181
Surfside	1982	5/18/1982	6.80388
Surfside	1982	5/18/1982	7.767763
Surfside	1982	5/18/1982	7.9095105
Surfside	1982	5/18/1982	8.8733935
Surfside	1982	5/18/1982	9.3836845
Surfside	1982	5/18/1982	9.63883
Surfside	1982	5/18/1982	11.226402
Surfside	1982	5/19/1982	5.953395
Surfside	1982	5/19/1982	6.3219385
Surfside	1982	5/20/1982	5.7549485
Surfside	1982	5/20/1982	7.427569
Surfside	1982	5/20/1982	12.076887
Surfside	1982	5/21/1982	4.7910655
Surfside	1982	5/21/1982	6.80388
Surfside	1982	5/25/1982	4.819415
Surfside	1982	5/25/1982	8.958442
Surfside	1982	5/26/1982	4.819415
Surfside	1982	5/27/1982	4.479221
Surfside	1982	5/27/1982	5.046211
Surfside	1982	5/27/1982	7.711064
Surfside	1982	5/28/1982	5.046211
Surfside	1982	5/28/1982	6.010094
Surfside	1982	6/9/1982	7.93786
Surfside	1982	6/21/1982	6.747181
Surfside	1982	6/23/1982	4.592619
Surfside	1982	6/23/1982	5.613201
Surfside	1982	6/24/1982	6.406987
Surfside	1982	7/4/1982	6.973977
Surfside	1982	7/7/1982	9.07184
Surfside	1982	7/9/1982	6.690482
Surfside	1982	8/15/1982	10.092422
Surfside	1982	9/6/1982	5.159609
Surfside	1982	9/9/1982	10.20582
Surfside	1982	9/13/1982	8.618248
Surfside	1982	9/13/1982	9.1568885
Surfside	1982	9/14/1982	7.597666

Surfside	1982	9/17/1982	5.556502
Surfside	1982	9/19/1982	9.07184
Surfside	1982	9/21/1982	6.4920355
Surfside	1982	9/23/1982	8.391452
Surfside	1982	9/23/1982	10.5176645
Surfside	1982	9/24/1982	9.241937
Surfside	1982	9/28/1982	5.5848515
Surfside	1982	10/2/1982	7.0590255
Surfside	1982	10/5/1982	7.030676
Surfside	1982	10/5/1982	7.711064
Surfside	1982	10/5/1982	9.07184
Surfside	1982	10/6/1982	5.443104
Surfside	1982	10/6/1982	7.144074
Surfside	1982	10/6/1982	7.484268
Surfside	1982	10/7/1982	6.9456275
Surfside	1982	10/7/1982	11.3398
Surfside	1982	10/8/1982	5.896696
Surfside	1982	10/8/1982	8.334753
Surfside	1983	5/6/1983	5.443104
Surfside	1983	5/7/1983	7.711064
Surfside	1983	5/8/1983	9.1001895
Surfside	1983	5/10/1983	7.711064
Surfside	1983	5/11/1983	5.783298
Surfside	1983	5/28/1983	7.711064
Surfside	1983	6/18/1983	10.432616
Surfside	1983	6/19/1983	6.633783
Surfside	1983	6/26/1983	4.762716
Surfside	1983	6/26/1983	9.752228
Surfside	1983	6/27/1983	14.855138
Surfside	1983	7/6/1983	6.123492
Surfside	1983	7/9/1983	6.80388
Surfside	1983	7/10/1983	7.711064
Surfside	1983	7/10/1983	7.7961125
Surfside	1983	7/11/1983	6.406987
Surfside	1983	7/11/1983	7.654365
Surfside	1983	9/1/1983	6.010094
Surfside	1983	9/3/1983	7.824462
Surfside	1983	9/11/1983	14.401546
Surfside	1983	9/17/1983	6.690482
Surfside	1983	9/18/1983	6.010094
Surfside	1983	9/18/1983	6.577084
Surfside	1983	9/19/1983	4.53592
Surfside	1983	9/19/1983	4.989512
Surfside	1983	9/19/1983	7.200773
Surfside	1983	9/19/1983	7.257472
Surfside	1983	9/20/1983	9.241937
Surfside	1983	9/23/1983	8.221355
Surfside	1983	9/23/1983	12.020188
Surfside	1983	9/24/1983	7.484268
Surfside	1983	9/25/1983	6.520385
Surfside	1983	9/30/1983	6.917278
Surfside	1983	10/1/1983	3.4302895
Surfside	1983	10/1/1983	4.025629
Surfside	1983	10/1/1983	4.706017
Surfside	1983	10/1/1983	5.556502

Surfside	1983	10/1/1983	5.9250455
Surfside	1983	10/1/1983	6.123492
Surfside	1983	10/1/1983	6.5487345
Surfside	1983	10/1/1983	6.6054335
Surfside	1983	10/1/1983	7.030676
Surfside	1983	10/1/1983	7.767763
Surfside	1983	10/3/1983	5.329706
Surfside	1983	10/3/1983	6.406987
Surfside	1983	10/4/1983	6.6621325
Surfside	1983	10/5/1983	6.747181
Surfside	1983	10/5/1983	7.540967
Surfside	1983	10/6/1983	3.742134
Surfside	1983	10/6/1983	4.309124
Surfside	1983	10/6/1983	4.989512
Surfside	1983	10/6/1983	6.406987
Surfside	1983	10/6/1983	6.633783
Surfside	1983	10/6/1983	7.200773
Surfside	1983	10/6/1983	12.870673
Surfside	1983	10/7/1983	4.309124
Surfside	1983	10/7/1983	5.613201
Surfside	1983	10/7/1983	6.80388
Surfside	1983	10/8/1983	4.252425
Surfside	1983	10/8/1983	4.8477645
Surfside	1983	10/8/1983	5.5848515
Surfside	1983	10/8/1983	6.23689
Surfside	1983	10/8/1983	6.4353365
Surfside	1983	10/8/1983	7.314171
Surfside	1983	10/8/1983	7.314171
Surfside	1983	10/8/1983	8.051258
Surfside	1983	10/9/1983	6.1518415
Surfside	1983	10/9/1983	6.180191
Surfside	1983	10/9/1983	9.015141
Surfside	1983	10/10/1983	5.726599
Surfside	1983	10/12/1983	5.216308
Surfside	1983	10/13/1983	4.422522
Surfside	1983	10/13/1983	5.613201
Surfside	1983	10/13/1983	6.860579
Surfside	1983	10/14/1983	4.422522
Surfside	1983	10/14/1983	9.468733
Surfside	1983	10/14/1983	13.154168
Surfside	1983	10/15/1983	4.876114
Surfside	1983	10/15/1983	5.613201
Surfside	1983	10/15/1983	6.747181
Surfside	1984	4/20/1984	5.4714535
Surfside	1984	4/20/1984	7.200773
Surfside	1984	5/5/1984	6.406987
Surfside	1984	5/5/1984	8.4198015
Surfside	1984	5/10/1984	5.216308
Surfside	1984	5/10/1984	6.23689
Surfside	1984	5/10/1984	6.6621325
Surfside	1984	5/25/1984	7.0023265
Surfside	1984	6/10/1984	8.107957
Surfside	1984	6/15/1984	5.7549485
Surfside	1984	6/15/1984	7.824462
Surfside	1984	6/16/1984	4.706017

Surfside	1984	6/16/1984	7.427569
Surfside	1984	6/21/1984	6.860579
Surfside	1984	6/24/1984	7.93786
Surfside	1984	6/25/1984	8.334753
Surfside	1984	7/3/1984	3.40194
Surfside	1984	7/3/1984	3.40194
Surfside	1984	7/3/1984	4.082328
Surfside	1984	7/3/1984	5.839997
Surfside	1984	7/3/1984	6.463686
Surfside	1984	7/3/1984	7.030676
Surfside	1984	7/8/1984	4.252425
Surfside	1984	9/15/1984	5.499803
Surfside	1984	9/15/1984	6.010094
Surfside	1984	9/19/1984	5.443104
Surfside	1984	9/19/1984	6.406987
Surfside	1984	9/19/1984	6.633783
Surfside	1984	9/19/1984	6.6621325
Surfside	1984	9/19/1984	7.030676
Surfside	1984	9/19/1984	9.5537815
Surfside	1984	9/19/1984	9.8372765
Surfside	1984	9/20/1984	5.046211
Surfside	1984	9/20/1984	5.556502
Surfside	1984	9/20/1984	5.839997
Surfside	1984	9/20/1984	6.463686
Surfside	1984	9/20/1984	7.087375
Surfside	1984	9/20/1984	7.427569
Surfside	1984	9/20/1984	8.958442
Surfside	1984	9/20/1984	9.128539
Surfside	1984	9/20/1984	9.695529
Surfside	1984	9/20/1984	9.865626
Surfside	1984	9/20/1984	10.3475675
Surfside	1984	9/20/1984	10.602713
Surfside	1984	9/20/1984	10.886208
Surfside	1984	9/20/1984	11.113004
Surfside	1984	9/20/1984	16.5277585
Surfside	1984	9/21/1984	4.932813
Surfside	1984	9/21/1984	4.989512
Surfside	1984	9/21/1984	6.1518415
Surfside	1984	9/21/1984	7.6827145
Surfside	1984	9/21/1984	11.113004
Surfside	1984	9/22/1984	8.3631025
Surfside	1984	9/23/1984	6.066793
Surfside	1984	9/23/1984	6.2085405
Surfside	1984	9/23/1984	7.540967
Surfside	1984	9/23/1984	8.107957
Surfside	1984	9/23/1984	12.020188
Surfside	1984	9/24/1984	7.314171
Surfside	1984	9/24/1984	7.484268
Surfside	1984	9/24/1984	8.845044
Surfside	1984	9/25/1984	6.0384435
Surfside	1984	9/25/1984	6.577084
Surfside	1984	9/25/1984	9.979024
Surfside	1984	9/25/1984	12.020188
Surfside	1984	9/26/1984	5.2446575
Surfside	1984	9/26/1984	6.406987

Surfside	1984	9/26/1984	6.633783
Surfside	1984	9/26/1984	7.144074
Surfside	1984	9/26/1984	7.1724235
Surfside	1984	9/26/1984	8.561549
Surfside	1984	9/26/1984	8.845044
Surfside	1984	9/26/1984	9.0434905
Surfside	1984	9/26/1984	9.922325
Surfside	1984	9/30/1984	5.273007
Surfside	1984	9/30/1984	6.123492
Surfside	1984	9/30/1984	9.525432
Surfside	1984	9/30/1984	9.695529
Surfside	1984	10/1/1984	9.298636
Surfside	1984	10/1/1984	9.3269855
Surfside	1984	10/1/1984	10.489315
Surfside	1984	10/2/1984	7.030676
Surfside	1984	10/2/1984	7.427569
Surfside	1984	10/2/1984	9.63883
Surfside	1984	10/2/1984	10.20582
Surfside	1984	10/2/1984	10.432616
Surfside	1984	10/2/1984	13.551061
Surfside	1984	10/3/1984	11.283101
Surfside	1984	10/4/1984	5.896696
Surfside	1984	10/4/1984	7.881161
Surfside	1984	10/5/1984	4.762716
Surfside	1984	10/5/1984	5.839997
Surfside	1984	10/5/1984	6.350288
Surfside	1984	10/5/1984	7.37087
Surfside	1984	10/5/1984	8.391452
Surfside	1984	10/5/1984	8.50485
Surfside	1984	10/5/1984	9.752228
Surfside	1984	10/5/1984	11.963489
Surfside	1984	10/5/1984	11.9918385
Surfside	1984	10/6/1984	5.386405
Surfside	1984	10/6/1984	5.386405
Surfside	1984	10/6/1984	7.144074
Surfside	1984	10/6/1984	7.597666
Surfside	1984	10/6/1984	7.711064
Surfside	1984	10/6/1984	7.9095105
Surfside	1984	10/6/1984	7.994559
Surfside	1984	10/6/1984	10.602713
Surfside	1984	10/6/1984	11.3114505
Surfside	1984	10/6/1984	11.7083435
Surfside	1984	10/6/1984	11.9918385
Surfside	1984	10/13/1984	9.468733
Surfside	1984	10/14/1984	6.8322295
Surfside	1984	10/14/1984	9.8939755
Surfside	1984	10/15/1984	10.659412
Surfside	1984	10/15/1984	10.659412
Surfside	1985	4/25/1985	5.839997
Surfside	1985	4/25/1985	6.6621325
Surfside	1985	4/26/1985	4.5642695
Surfside	1985	4/26/1985	6.520385
Surfside	1985	4/26/1985	8.6465975
Surfside	1985	4/26/1985	11.3398
Surfside	1985	4/27/1985	7.257472

Surfside	1985	4/28/1985		6.4353365
Surfside	1985	4/29/1985		5.8116475
Surfside	1985	4/29/1985		8.221355
Surfside	1985	5/1/1985		6.4920355
Surfside	1985	5/2/1985		6.23689
Surfside	1985	5/2/1985		8.845044
Surfside	1985	5/2/1985		9.979024
Surfside	1985	5/7/1985		7.597666
Surfside	1985	5/18/1985		5.159609
Surfside	1985	5/18/1985		6.406987
Surfside	1985	5/19/1985		4.989512
Surfside	1985	5/19/1985		5.10291
Surfside	1985	5/24/1985		7.881161
Surfside	1985	5/27/1985		4.8477645
Surfside	1985	5/31/1985		9.63883
Surfside	1985	6/3/1985		6.690482
Surfside	1985	6/4/1985		6.350288
Surfside	1985	6/4/1985		7.881161
Surfside	1985	6/22/1985		7.711064
Surfside	1985	6/23/1985		7.7394135
Surfside	1985	8/10/1985		6.350288
Surfside	1985	8/12/1985		4.6209685
Surfside	1985	8/12/1985		6.577084
Surfside	1985	8/13/1985		7.654365
Surfside	1985	8/15/1985		11.113004
Surfside	1985	8/30/1985		5.5281525
Surfside	1985	8/30/1985		7.824462
Surfside	1985	9/4/1985		4.082328
Surfside	1985	9/4/1985		7.314171
Surfside	1985	9/5/1985		5.443104
Surfside	1985	9/24/1985		7.994559
Surfside	1985	9/24/1985		8.901743
Surfside	1985	9/25/1985		4.025629
Surfside	1985	9/25/1985		5.329706
Surfside	1985	9/25/1985		6.2085405
Surfside	1985	9/25/1985		6.2652395
Surfside	1985	9/25/1985		7.030676
Surfside	1985	9/25/1985		7.144074
Surfside	1985	9/25/1985		7.257472
Surfside	1985	9/25/1985	Brady Simpson	7.484268
Surfside	1985	9/25/1985		8.4198015
Surfside	1985	9/25/1985		8.448151
Surfside	1985	9/25/1985		8.50485
Surfside	1985	9/25/1985		8.7599955
Surfside	1985	9/25/1985	Brady Simpson	9.1568885
Surfside	1985	9/25/1985		9.3269855
Surfside	1985	9/25/1985	Brady Simpson	9.355335
Surfside	1985	9/25/1985		9.979024
Surfside	1985	9/25/1985		10.0640725
Surfside	1985	9/25/1985		11.0846545
Surfside	1985	9/28/1985		5.556502
Surfside	1985	9/30/1985		4.309124
Surfside	1985	9/30/1985		9.5311019
Surfside	1985	10/1/1985		6.5487345
Surfside	1985	10/1/1985		7.427569

Surfside	1985	10/1/1985	7.597666
Surfside	1985	10/1/1985	7.711064
Surfside	1985	10/2/1985	8.391452
Surfside	1985	10/2/1985	8.618248
Surfside	1985	10/3/1985	6.3786375
Surfside	1985	10/3/1985	6.6054335
Surfside	1985	10/3/1985	7.597666
Surfside	1985	10/3/1985	11.9351395
Surfside	1985	10/6/1985	6.123492
Surfside	1985	10/6/1985	6.406987
Surfside	1985	10/6/1985	10.546014
Surfside	1985	10/6/1985	10.716111
Surfside	1985	10/7/1985	4.082328
Surfside	1985	10/7/1985	7.0590255
Surfside	1985	10/9/1985	5.953395
Surfside	1985	10/10/1985	9.015141
Surfside	1985	10/10/1985	10.602713
Surfside	1985	10/11/1985	5.443104
Surfside	1985	10/11/1985	5.556502
Surfside	1985	10/11/1985	5.6699
Surfside	1985	10/11/1985	5.6699
Surfside	1985	10/11/1985	5.839997
Surfside	1985	10/11/1985	7.0023265
Surfside	1985	10/11/1985	7.030676
Surfside	1985	10/11/1985	7.5126175
Surfside	1985	10/11/1985	8.0229085
Surfside	1985	10/11/1985	9.695529
Surfside	1985	10/11/1985	9.8372765
Surfside	1985	10/14/1985	7.2858215
Surfside	1985	10/15/1985	4.649318
Surfside	1985	10/15/1985	5.6415505
Surfside	1985	10/15/1985	5.6982495
Surfside	1985	10/15/1985	5.839997
Surfside	1985	10/15/1985	6.350288
Surfside	1985	10/15/1985	6.8322295
Surfside	1985	10/15/1985	6.917278
Surfside	1985	10/15/1985	6.973977
Surfside	1985	10/15/1985	10.0073735
Surfside	1985	10/15/1985	12.5588285
Surfside	1985	10/16/1985	4.876114
Surfside	1985	10/16/1985	6.123492
Surfside	1985	10/16/1985	6.3786375
Surfside	1985	10/16/1985	6.406987
Surfside	1985	10/16/1985	7.0590255
Surfside	1985	10/16/1985	7.427569
Surfside	1985	10/16/1985	7.881161
Surfside	1985	10/16/1985	7.93786
Surfside	1985	10/16/1985	8.448151
Surfside	1985	10/16/1985	8.618248
Surfside	1985	10/16/1985	8.7599955
Surfside	1985	10/16/1985	9.412034
Surfside	1985	10/16/1985	11.8784405
Surfside	1985	10/19/1985	7.200773
Surfside	1985	10/20/1985	5.2446575
Surfside	1985	10/20/1985	6.406987

Surfside	1985	10/20/1985	7.314171
Surfside	1985	10/20/1985	7.9095105
Surfside	1985	10/20/1985	10.20582
Surfside	1985	10/20/1985	13.4093135
Surfside	1985	10/20/1985	15.989118
Surfside	1985	10/21/1985	4.9611625
Surfside	1985	10/21/1985	6.0384435
Surfside	1985	10/21/1985	8.2497045
Surfside	1985	10/21/1985	9.355335
Surfside	1985	10/21/1985	11.056305
Surfside	1985	10/21/1985	13.437663
Surfside	1985	10/21/1985	15.648924
Surfside	1985	10/23/1985	8.3631025
Surfside	1985	10/23/1985	10.489315
Surfside	1985	10/23/1985	13.4093135
Surfside	1985	10/24/1985	5.783298
Surfside	1985	10/24/1985	6.4353365
Surfside	1985	10/24/1985	6.4353365
Surfside	1985	10/24/1985	9.2135875
Surfside	1985	10/24/1985	9.979024
Surfside	1985	10/24/1985	10.942907
Surfside	1985	10/24/1985	13.1258185
Surfside	1985	10/24/1985	13.7495075
Surfside	1985	10/25/1985	0.963883
Surfside	1985	10/25/1985	8.391452
Surfside	1985	10/25/1985	10.092422
Surfside	1985	10/27/1985	5.046211
Surfside	1986	4/27/1986	6.9456275
Surfside	1986	4/28/1986	7.200773
Surfside	1986	4/29/1986	7.994559
Surfside	1986	4/30/1986	5.2446575
Surfside	1986	4/30/1986	10.092422
Surfside	1986	5/1/1986	5.273007
Surfside	1986	5/1/1986	6.066793
Surfside	1986	5/1/1986	6.747181
Surfside	1986	5/1/1986	7.257472
Surfside	1986	5/1/1986	7.484268
Surfside	1986	5/1/1986	7.711064
Surfside	1986	5/1/1986	8.0229085
Surfside	1986	5/1/1986	8.9300925
Surfside	1986	5/1/1986	14.288148
Surfside	1986	5/2/1986	6.350288
Surfside	1986	5/11/1986	5.4714535
Surfside	1986	5/12/1986	6.066793
Surfside	1986	5/14/1986	6.6621325
Surfside	1986	5/14/1986	7.7394135
Surfside	1986	5/14/1986	7.93786
Surfside	1986	5/15/1986	5.4714535
Surfside	1986	5/15/1986	7.314171
Surfside	1986	5/16/1986	7.0023265
Surfside	1986	5/21/1986	4.5075705
Surfside	1986	5/21/1986	7.087375
Surfside	1986	5/21/1986	7.087375
Surfside	1986	5/21/1986	7.9662095
Surfside	1986	5/22/1986	5.0745605

Surfside	1986	5/23/1986	3.912231
Surfside	1986	5/23/1986	4.6776675
Surfside	1986	5/23/1986	6.293589
Surfside	1986	5/23/1986	6.3786375
Surfside	1986	5/23/1986	6.463686
Surfside	1986	5/26/1986	3.9405805
Surfside	1986	5/26/1986	5.216308
Surfside	1986	6/14/1986	8.0229085
Surfside	1986	6/22/1986	5.783298
Surfside	1986	6/22/1986	6.6054335
Surfside	1986	6/22/1986	7.3425205
Surfside	1986	6/22/1986	8.618248
Surfside	1986	6/24/1986	5.4147545
Surfside	1986	6/25/1986	7.994559
Surfside	1986	6/27/1986	5.159609
Surfside	1986	6/27/1986	5.556502
Surfside	1986	6/27/1986	5.8683465
Surfside	1986	6/27/1986	5.896696
Surfside	1986	6/27/1986	6.010094
Surfside	1986	6/27/1986	9.298636
Surfside	1986	6/28/1986	4.53592
Surfside	1986	6/28/1986	6.463686
Surfside	1986	6/28/1986	7.257472
Surfside	1986	6/28/1986	8.278054
Surfside	1986	6/28/1986	8.3064035
Surfside	1986	6/28/1986	10.942907
Surfside	1986	6/30/1986	6.577084
Surfside	1986	6/30/1986	7.0590255
Surfside	1986	8/26/1986	7.654365
Surfside	1986	8/26/1986	8.051258
Surfside	1986	8/26/1986	9.07184
Surfside	1986	8/28/1986	5.896696
Surfside	1986	8/28/1986	6.010094
Surfside	1986	8/28/1986	6.917278
Surfside	1986	8/28/1986	10.886208
Surfside	1986	9/4/1986	8.1930055
Surfside	1986	9/6/1986	8.8166945
Surfside	1986	9/7/1986	6.123492
Surfside	1986	9/7/1986	7.9095105
Surfside	1986	9/8/1986	6.4920355
Surfside	1986	9/8/1986	8.618248
Surfside	1986	9/13/1986	6.577084
Surfside	1986	9/13/1986	7.0590255
Surfside	1986	9/13/1986	8.3064035
Surfside	1986	9/13/1986	9.525432
Surfside	1986	9/14/1986	5.953395
Surfside	1986	9/16/1986	5.726599
Surfside	1986	9/20/1986	5.726599
Surfside	1986	9/22/1986	5.443104
Surfside	1986	9/23/1986	6.7188315
Surfside	1986	9/24/1986	5.953395
Surfside	1986	9/26/1986	6.5487345
Surfside	1986	9/26/1986	7.5693165
Surfside	1986	9/26/1986	7.881161
Surfside	1986	9/28/1986	7.8528115

Surfside	1986	9/29/1986	3.4302895
Surfside	1986	9/29/1986	4.819415
Surfside	1986	9/29/1986	5.839997
Surfside	1986	9/29/1986	6.3219385
Surfside	1986	9/29/1986	6.463686
Surfside	1986	9/29/1986	6.4920355
Surfside	1986	9/29/1986	7.0023265
Surfside	1986	9/29/1986	7.030676
Surfside	1986	9/29/1986	7.3425205
Surfside	1986	9/29/1986	7.427569
Surfside	1986	9/29/1986	7.597666
Surfside	1986	9/30/1986	6.520385
Surfside	1986	10/1/1986	5.613201
Surfside	1986	10/2/1986	5.443104
Surfside	1986	10/2/1986	6.690482
Surfside	1986	10/3/1986	6.8322295
Surfside	1986	10/3/1986	7.1157245
Surfside	1986	10/3/1986	8.674947
Surfside	1986	10/4/1986	4.932813
Surfside	1986	10/5/1986	4.3374735
Surfside	1986	10/21/1986	4.592619
Surfside	1986	10/22/1986	5.726599
Surfside	1986	10/22/1986	9.298636
Surfside	1986	10/23/1986	6.123492
Surfside	1986	10/23/1986	7.0023265
Surfside	1986	10/23/1986	7.994559
Surfside	1986	10/23/1986	8.334753
Surfside	1986	10/29/1986	5.386405
Surfside	1986	10/29/1986	9.1568885
Surfside	1986	10/30/1986	7.3425205
Surfside	1987	4/30/1987	7.314171
Surfside	1987	4/30/1987	7.93786
Surfside	1987	5/1/1987	6.010094
Surfside	1987	5/1/1987	6.973977
Surfside	1987	5/1/1987	7.484268
Surfside	1987	5/1/1987	8.278054
Surfside	1987	5/1/1987	11.396499
Surfside	1987	5/1/1987	11.736693
Surfside	1987	5/1/1987	11.90679
Surfside	1987	5/2/1987	6.8889285
Surfside	1987	5/2/1987	7.3425205
Surfside	1987	5/2/1987	7.6827145
Surfside	1987	5/2/1987	8.50485
Surfside	1987	5/3/1987	6.917278
Surfside	1987	5/3/1987	7.824462
Surfside	1987	5/4/1987	10.5176645
Surfside	1987	5/6/1987	6.577084
Surfside	1987	5/7/1987	7.087375
Surfside	1987	5/7/1987	10.20582
Surfside	1987	5/11/1987	6.406987
Surfside	1987	5/12/1987	6.973977
Surfside	1987	5/13/1987	4.53592
Surfside	1987	5/13/1987	6.973977
Surfside	1987	5/13/1987	7.484268
Surfside	1987	5/13/1987	7.767763

Surfside	1987	5/14/1987	5.273007
Surfside	1987	5/15/1987	6.520385
Surfside	1987	5/16/1987	9.07184
Surfside	1987	5/17/1987	5.159609
Surfside	1987	5/17/1987	5.953395
Surfside	1987	5/17/1987	6.0384435
Surfside	1987	5/17/1987	6.633783
Surfside	1987	5/17/1987	7.540967
Surfside	1987	5/18/1987	6.747181
Surfside	1987	5/20/1987	8.1930055
Surfside	1987	5/21/1987	5.783298
Surfside	1987	5/21/1987	8.107957
Surfside	1987	5/21/1987	23.2239104
Surfside	1987	5/22/1987	5.443104
Surfside	1987	5/22/1987	8.5898985
Surfside	1987	5/23/1987	5.613473155
Surfside	1987	5/27/1987	7.484268
Surfside	1987	6/5/1987	8.334753
Surfside	1987	6/6/1987	6.917278
Surfside	1987	6/8/1987	5.216308
Surfside	1987	6/8/1987	8.278054
Surfside	1987	6/9/1987	8.278054
Surfside	1987	6/12/1987	7.654365
Surfside	1987	6/12/1987	8.107957
Surfside	1987	7/7/1987	7.37087
Surfside	1987	7/21/1987	7.881161
Surfside	1987	7/23/1987	5.556502
Surfside	1987	7/23/1987	6.406987
Surfside	1987	7/23/1987	7.654365
Surfside	1987	8/7/1987	6.860579
Surfside	1987	8/9/1987	5.2446575
Surfside	1987	8/19/1987	6.633783
Surfside	1987	8/19/1987	7.597666
Surfside	1987	8/19/1987	8.901743
Surfside	1987	8/20/1987	1.6726205
Surfside	1987	8/20/1987	4.932813
Surfside	1987	8/22/1987	5.783298
Surfside	1987	8/22/1987	6.690482
Surfside	1987	8/23/1987	4.309124
Surfside	1987	8/26/1987	8.448151
Surfside	1987	8/30/1987	5.556502
Surfside	1987	8/30/1987	7.881161
Surfside	1987	9/14/1987	4.762716
Surfside	1987	9/14/1987	8.1363065
Surfside	1987	9/16/1987	7.597666
Surfside	1987	9/20/1987	7.144074
Surfside	1987	9/24/1987	2.608154
Surfside	1987	9/25/1987	6.577084
Surfside	1987	9/30/1987	13.3526145
Surfside	1987	10/5/1987	8.618248
Surfside	1987	10/8/1987	19.391058
Surfside	1987	10/9/1987	9.412034
Surfside	1987	10/10/1987	6.350288
Surfside	1987	10/10/1987	9.922325
Surfside	1987	10/16/1987	4.876114

Surfside	1987	10/16/1987	6.066793
Surfside	1987	10/18/1987	8.845044
Surfside	1987	10/18/1987	10.886208
Surfside	1987	10/19/1987	7.087375
Surfside	1987	10/19/1987	7.5126175
Surfside	1987	10/20/1987	7.030676
Surfside	1987	10/23/1987	7.540967
Surfside	1987	10/30/1987	8.3064035
Surfside	1988	4/27/1988	5.10291
Surfside	1988	4/27/1988	6.633783
Surfside	1988	4/27/1988	8.8733935
Surfside	1988	4/27/1988	10.489315
Surfside	1988	4/27/1988	14.685041
Surfside	1988	4/28/1988	5.10291
Surfside	1988	4/28/1988	6.406987
Surfside	1988	4/28/1988	7.087375
Surfside	1988	4/28/1988	7.087375
Surfside	1988	4/28/1988	8.164656
Surfside	1988	4/28/1988	8.845044
Surfside	1988	4/28/1988	9.63883
Surfside	1988	4/29/1988	4.706017
Surfside	1988	4/29/1988	5.1312595
Surfside	1988	4/29/1988	5.443104
Surfside	1988	4/29/1988	6.520385
Surfside	1988	4/29/1988	7.0590255
Surfside	1988	4/29/1988	7.37087
Surfside	1988	4/29/1988	7.824462
Surfside	1988	4/29/1988	9.015141
Surfside	1988	4/29/1988	9.07184
Surfside	1988	4/29/1988	11.0279555
Surfside	1988	4/30/1988	6.350288
Surfside	1988	4/30/1988	6.350288
Surfside	1988	4/30/1988	6.80388
Surfside	1988	4/30/1988	7.484268
Surfside	1988	4/30/1988	7.767763
Surfside	1988	4/30/1988	7.881161
Surfside	1988	4/30/1988	8.278054
Surfside	1988	4/30/1988	8.278054
Surfside	1988	4/30/1988	9.298636
Surfside	1988	4/30/1988	11.566596
Surfside	1988	4/30/1988	12.47378
Surfside	1988	5/2/1988	6.80388
Surfside	1988	5/3/1988	8.788345
Surfside	1988	5/3/1988	9.2702865
Surfside	1988	5/7/1988	5.443104
Surfside	1988	5/7/1988	6.010094
Surfside	1988	5/7/1988	7.087375
Surfside	1988	5/7/1988	8.845044
Surfside	1988	5/7/1988	9.298636
Surfside	1988	5/8/1988	5.839997
Surfside	1988	5/8/1988	6.350288
Surfside	1988	5/8/1988	7.314171
Surfside	1988	5/8/1988	9.752228
Surfside	1988	5/9/1988	3.175144
Surfside	1988	5/9/1988	5.896696

Surfside	1988	5/13/1988	7.654365
Surfside	1988	5/20/1988	7.597666
Surfside	1988	5/20/1988	9.695529
Surfside	1988	5/29/1988	7.654365
Surfside	1988	5/29/1988	8.164656
Surfside	1988	5/31/1988	10.20582
Surfside	1988	6/6/1988	8.618248
Surfside	1988	6/7/1988	6.123492
Surfside	1988	6/7/1988	7.5126175
Surfside	1988	6/7/1988	7.540967
Surfside	1988	6/7/1988	9.63883
Surfside	1988	6/7/1988	9.7238785
Surfside	1988	6/7/1988	13.551061
Surfside	1988	6/11/1988	9.979024
Surfside	1988	6/13/1988	6.123492
Surfside	1988	6/25/1988	12.927372
Surfside	1988	7/3/1988	6.350288
Surfside	1988	7/3/1988	6.350288
Surfside	1988	9/3/1988	6.9456275
Surfside	1988	9/3/1988	9.63883
Surfside	1988	9/10/1988	7.484268
Surfside	1988	9/11/1988	7.5126175
Surfside	1988	9/20/1988	7.030676
Surfside	1988	9/24/1988	5.6699
Surfside	1988	9/26/1988	6.350288
Surfside	1988	9/26/1988	7.257472
Surfside	1988	10/3/1988	4.7343665
Surfside	1988	10/10/1988	8.731646
Surfside	1988	10/11/1988	6.80388
Surfside	1988	10/11/1988	8.164656
Surfside	1988	10/12/1988	5.443104
Surfside	1988	10/12/1988	6.80388
Surfside	1988	10/12/1988	8.278054
Surfside	1988	10/15/1988	8.845044
Surfside	1988	10/15/1988	11.5382465
Surfside	1988	10/16/1988	5.839997
Surfside	1988	10/16/1988	7.314171
Surfside	1989	4/25/1989	6.406987
Surfside	1989	4/26/1989	4.592619
Surfside	1989	4/27/1989	7.767763
Surfside	1989	4/27/1989	9.07184
Surfside	1989	4/27/1989	9.241937
Surfside	1989	4/28/1989	3.288542
Surfside	1989	4/28/1989	4.025629
Surfside	1989	4/28/1989	4.819415
Surfside	1989	4/28/1989	5.6415505
Surfside	1989	4/28/1989	6.973977
Surfside	1989	4/28/1989	7.540967
Surfside	1989	4/28/1989	7.7394135
Surfside	1989	4/28/1989	8.845044
Surfside	1989	4/28/1989	11.3398
Surfside	1989	4/29/1989	6.350288
Surfside	1989	4/29/1989	7.5126175
Surfside	1989	4/29/1989	7.540967
Surfside	1989	4/30/1989	5.6415505

Surfside	1989	4/30/1989	5.839997
Surfside	1989	4/30/1989	6.3786375
Surfside	1989	4/30/1989	7.257472
Surfside	1989	4/30/1989	8.731646
Surfside	1989	4/30/1989	10.1774705
Surfside	1989	4/30/1989	12.927372
Surfside	1989	5/1/1989	8.958442
Surfside	1989	5/3/1989	6.973977
Surfside	1989	5/4/1989	5.6415505
Surfside	1989	5/4/1989	6.123492
Surfside	1989	5/4/1989	6.747181
Surfside	1989	5/4/1989	7.484268
Surfside	1989	5/4/1989	9.298636
Surfside	1989	5/4/1989	9.922325
Surfside	1989	5/5/1989	10.092422
Surfside	1989	5/8/1989	5.216308
Surfside	1989	5/8/1989	5.386405
Surfside	1989	5/8/1989	5.443104
Surfside	1989	5/13/1989	4.989512
Surfside	1989	5/13/1989	6.463686
Surfside	1989	5/14/1989	6.406987
Surfside	1989	5/14/1989	6.520385
Surfside	1989	5/14/1989	9.525432
Surfside	1989	5/15/1989	13.1258185
Surfside	1989	5/16/1989	16.2385936
Surfside	1989	5/17/1989	9.07184
Surfside	1989	5/19/1989	7.540967
Surfside	1989	5/22/1989	5.216308
Surfside	1989	5/24/1989	8.278054
Surfside	1989	5/25/1989	4.2240755
Surfside	1989	5/25/1989	5.10291
Surfside	1989	5/25/1989	5.159609
Surfside	1989	5/25/1989	6.520385
Surfside	1989	5/26/1989	8.4198015
Surfside	1989	6/22/1989	7.257472
Surfside	1989	8/27/1989	9.525432
Surfside	1989	9/8/1989	7.767763
Surfside	1991	5/2/1991	7.257472
Surfside	1991	5/5/1991	10.092422
Surfside	1991	5/7/1991	7.654365
Surfside	1991	5/26/1991	6.0951425
Surfside	1991	6/15/1991	13.267566
Surfside	1991	6/18/1991	0
Surfside	1991	6/18/1991	0
Surfside	1991	6/18/1991	0
Surfside	1991	6/28/1991	8.334753
Surfside	1991	7/3/1991	6.80388
Surfside	1991	7/3/1991	8.448151
Surfside	1991	7/4/1991	5.0745605
Surfside	1991	7/7/1991	6.9456275
Surfside	1991	8/28/1991	6.747181
Surfside	1991	9/11/1991	7.8528115
Surfside	1991	9/27/1991	8.845044
Surfside	1991	10/4/1991	6.350288
Surfside	1991	10/5/1991	8.845044

Surfside	1991	10/6/1991	6.1518415
Surfside	1991	10/7/1991	4.3374735
Surfside	1991	10/13/1991	6.123492
Surfside	1991	10/13/1991	7.37087
Surfside	1991	10/13/1991	9.298636
Surfside	1991	10/14/1991	5.896696
Surfside	1991	10/14/1991	6.406987
Surfside	1991	10/14/1991	9.298636
Surfside	1991	10/14/1991	12.984071
Surfside	1991	10/15/1991	6.010094
Surfside	1991	10/15/1991	12.813974
Surfside	1991	10/16/1991	3.40194
Surfside	1991	10/16/1991	5.216308
Surfside	1991	10/16/1991	5.4147545
Surfside	1991	10/16/1991	15.1669825
Surfside	1991	10/17/1991	6.350288
Surfside	1991	10/17/1991	7.711064
Surfside	1991	10/18/1991	3.6570855
Surfside	1991	10/18/1991	5.4147545
Surfside	1991	10/18/1991	6.406987
Surfside	1991	10/18/1991	7.7394135
Surfside	1991	10/18/1991	8.4198015
Surfside	1991	10/18/1991	10.489315
Surfside	1991	10/19/1991	3.855532
Surfside	1991	10/19/1991	4.7910655
Surfside	1991	10/19/1991	5.159609
Surfside	1991	10/19/1991	5.4147545
Surfside	1991	10/19/1991	5.839997
Surfside	1991	10/19/1991	6.1518415
Surfside	1991	10/19/1991	6.293589
Surfside	1991	10/19/1991	7.711064
Surfside	1991	10/19/1991	9.07184
Surfside	1991	10/19/1991	10.999606
Surfside	1991	10/20/1991	5.839997
Surfside	1991	10/22/1991	6.123492
Surfside	1991	10/22/1991	6.350288
Surfside	1991	10/22/1991	15.705623
Surfside	1991	10/23/1991	6.80388
Surfside	1991	10/23/1991	7.540967
Surfside	1991	10/27/1991	18.653971
Surfside	1991	10/28/1991	3.628736
Surfside	1991	10/28/1991	3.628736
Surfside	1991	10/28/1991	5.10291
Surfside	1991	10/28/1991	5.3580555
Surfside	1991	10/28/1991	6.1518415
Surfside	1991	10/28/1991	6.5487345
Surfside	1991	10/28/1991	7.8528115
Surfside	1991	10/28/1991	10.4609655
Surfside	1991	10/31/1991	5.556502
Surfside	1991	10/31/1991	5.9817445
Surfside	1991	10/31/1991	6.9456275
Surfside	1991	10/31/1991	7.0590255
Surfside	1991	10/31/1991	9.128539
Surfside	1991	11/2/1991	5.159609
Surfside	1991	11/2/1991	7.9095105

Surfside	1992	4/19/1992	11.113004
Surfside	1992	4/24/1992	10.9712565
Surfside	1992	4/26/1992	10.886208
Surfside	1992	5/15/1992	8.674947
Surfside	1992	5/16/1992	6.577084
Surfside	1992	5/16/1992	8.1930055
Surfside	1992	5/16/1992	10.9712565
Surfside	1992	5/18/1992	9.298636
Surfside	1992	6/2/1992	5.953395
Surfside	1992	6/15/1992	6.066793
Surfside	1992	6/16/1992	3.231843
Surfside	1992	6/16/1992	5.896696
Surfside	1992	6/21/1992	6.80388
Surfside	1992	6/24/1992	6.123492
Surfside	1992	6/27/1992	7.654365
Surfside	1992	6/28/1992	6.2652395
Surfside	1992	6/28/1992	6.7755305
Surfside	2000	6/3/2000	2.8632995
Surfside	2000	6/8/2000	7.427569
Surfside	2000	6/9/2000	5.5281525
Surfside	2000	6/14/2000	6.633783
Surfside	2000	6/15/2000	6.633783
Surfside	2000	6/17/2000	5.0178615
Surfside	2000	6/19/2000	7.597666
Surfside	2000	6/20/2000	9.8372765
Surfside	2000	6/23/2000	5.896696
Surfside	2000	6/23/2000	12.0485375
Surfside	2000	6/24/2000	5.556502
Surfside	2000	6/24/2000	8.391452
Surfside	2000	6/24/2000	12.813974
Surfside	2000	6/24/2000	13.551061
Surfside	2000	6/25/2000	4.989512
Surfside	2000	6/25/2000	8.334753
Surfside	2000	6/25/2000	8.788345
Surfside	2000	6/25/2000	8.788345
Surfside	2000	6/25/2000	12.2186345
Surfside	2000	7/3/2000	5.273007
Surfside	2000	7/3/2000	9.07184
Surfside	2000	7/5/2000	4.819415
Surfside	2000	7/5/2000	8.788345
Surfside	2000	7/6/2000	9.922325
Surfside	2000	7/6/2000	11.6516445
Surfside	2000	7/9/2000	6.2085405
Surfside	2000	7/9/2000	6.4353365
Surfside	2000	7/11/2000	6.293589
Surfside	2000	7/24/2000	8.5898985
Surfside	2000	8/6/2000	4.3374735
Surfside	2000	8/6/2000	9.07184
Surfside	2000	8/6/2000	12.303683
Surfside	2000	9/22/2000	10.716111
Surfside	2000	9/24/2000	12.0485375
Surfside	2000	9/26/2000	6.8889285
Surfside	2001	4/1/2001	10.035723
Surfside	2001	6/3/2001	8.051258
Surfside	2001	6/5/2001	7.484268

Surfside	2001	6/11/2001	7.9662095
Surfside	2001	6/17/2001	6.8889285
Surfside	2001	7/5/2001	9.7805775
Surfside	2001	7/5/2001	9.7805775
Surfside	2001	7/6/2001	7.484268
Surfside	2001	7/6/2001	7.6827145
Surfside	2001	7/26/2001	11.1413535
Surfside	2001	8/17/2001	8.788345
Surfside	2001	9/23/2001	8.4198015
Surfside	2001	9/23/2001	10.092422
Surfside	2001	9/23/2001	13.0691195
Surfside	2001	10/13/2001	4.5075705
Surfside	2001	10/13/2001	7.654365
Surfside	2001	10/13/2001	16.0174675
Surfside	2001	10/16/2001	6.5487345
Surfside	2001	10/16/2001	7.3992195
Surfside	2001	10/17/2001	7.0590255
Surfside	2001	10/21/2001	8.618248
Surfside	2001	10/22/2001	8.4765005
Surfside	2001	10/23/2001	7.314171
Surfside	2001	10/23/2001	7.881161
Surfside	2001	10/23/2001	8.3631025
Surfside	2001	10/23/2001	8.845044
Surfside	2001	10/23/2001	11.169703
Surfside	2001	10/23/2001	12.417081
Surfside	2001	10/24/2001	12.190285
Surfside	2001	10/27/2001	5.839997
Surfside	2001	10/27/2001	6.010094
Surfside	2002	4/20/2002	8.901743
Surfside	2002	6/10/2002	12.700576
Surfside	2002	7/5/2002	8.278054
Surfside	2002	7/5/2002	11.9918385
Surfside	2002	7/28/2002	4.649318
Surfside	2002	8/2/2002	8.5331995
Surfside	2002	8/2/2002	8.9300925
Surfside	2002	8/15/2002	13.04077
Surfside	2002	8/20/2002	7.881161
Surfside	2002	8/21/2002	8.221355
Surfside	2002	9/18/2002	7.257472
Surfside	2002	10/5/2002	12.700576
Surfside	2003	6/17/2003	9.4403835
Surfside	2003	6/18/2003	11.9351395
Surfside	2003	8/15/2003	8.0229085
Surfside	2003	8/20/2003	8.278054
Surfside	2004	6/22/2004	9.8939755
Surfside	2004	6/25/2004	7.0590255
Surfside	2004	6/27/2004	9.63883
Surfside	2004	6/30/2004	7.597666
Surfside	2004	7/1/2004	10.5743635
Surfside	2004	7/11/2004	7.427569
Surfside	2004	7/12/2004	6.747181
Surfside	2004	10/1/2004	10.2341695
Surfside	2004	10/1/2004	10.8011595
Surfside	2004	10/1/2004	10.8578585
Surfside	2004	10/2/2004	7.711064

Surfside	2004	10/2/2004	10.149121
Surfside	2004	10/2/2004	10.8011595
Surfside	2004	10/5/2004	5.3580555
Surfside	2004	10/5/2004	5.4714535
Surfside	2004	10/5/2004	8.5331995
Surfside	2004	10/5/2004	9.468733
Surfside	2004	10/5/2004	9.752228
Surfside	2004	10/5/2004	12.0485375
Surfside	2005	6/5/2005	6.2652395
Surfside	2005	6/22/2005	8.2497045
Surfside	2005	6/28/2005	8.731646
Surfside	2005	7/14/2005	9.1568885
Surfside	2005	7/19/2005	9.6104805
Surfside	2005	9/19/2005	4.989512
Surfside	2005	9/20/2005	12.5021295
Surfside	2005	9/21/2005	11.850091
Surfside	2005	9/25/2005	3.9972795
Surfside	2005	9/25/2005	6.860579
Surfside	2005	10/15/2005	4.53592
Surfside	2005	10/16/2005	6.9456275
Surfside	2005	10/19/2005	6.7755305
Surfside	2006	6/30/2006	10.1207715
Surfside	2007	2/26/2007	10.8578585
Surfside	2007	5/28/2007	7.881161
Surfside	2007	6/10/2007	4.6776675
Surfside	2007	6/10/2007	7.7394135
Surfside	2007	6/10/2007	7.881161
Surfside	2007	6/10/2007	9.2135875
Surfside	2007	6/11/2007	5.896696
Surfside	2007	6/11/2007	7.5126175
Surfside	2007	6/11/2007	10.489315
Surfside	2007	6/23/2007	8.4198015
Surfside	2007	6/24/2007	8.9867915
Surfside	2007	6/25/2007	10.546014
Surfside	2007	6/26/2007	5.8683465
Surfside	2007	6/27/2007	8.334753
Surfside	2007	6/27/2007	11.736693
Surfside	2007	6/28/2007	6.0951425
Surfside	2007	6/28/2007	6.23689
Surfside	2007	10/13/2007	8.4198015
Surfside	2007	10/13/2007	10.829509
Surfside	2008	5/1/2008	5.953395
Surfside	2008	6/27/2008	6.7755305
Surfside	2008	10/6/2008	6.0951425
Surfside	2009	6/13/2009	8.845044
Surfside	2009	6/20/2009	7.7394135
Surfside	2009	6/20/2009	12.360382
Surfside	2009	7/7/2009	5.5848515
Surfside	2009	7/8/2009	5.8116475
Surfside	2009	7/12/2009	7.1724235
Surfside	2009	7/15/2009	7.597666
Surfside	2009	7/19/2009	4.6776675
Surfside	2010	5/7/2010	8.221355
Surfside	2011	6/21/2011	3.061746
Surfside	2011	6/21/2011	5.726599

Surfside	2012	no fish reported		
Surfside	2013	no fish reported as of 7/1/13		
Springmaid	1989	4/25/1989		5.44310844
Springmaid	1989	4/27/1989		6.123496995
Springmaid	1989	4/27/1989		9.723886432
Springmaid	1989	4/27/1989		9.667187386
Springmaid	1989	4/28/1989		7.966215998
Springmaid	1989	4/29/1989		5.783302718
Springmaid	1989	4/30/1989		12.8706835
Springmaid	1989	5/1/1989		4.422525608
Springmaid	1989	5/3/1989		5.102914163
Springmaid	1989	5/4/1989		4.422525608
Springmaid	1989	5/6/1989		7.087380781
Springmaid	1989	5/9/1989		6.463691273
Springmaid	1989	5/12/1989		6.151846518
Springmaid	1989	5/15/1989		8.845051215
Springmaid	1989	5/21/1989		7.314176966
Springmaid	1989	6/27/1989		6.463691273
Springmaid	1989	6/27/1989		6.236895088
Springmaid	1989	9/10/1989		6.520390319
Springmaid	1989	9/15/1989		4.98951607
Springmaid	1991	1/26/1991		6.577089365
Springmaid	1991	1/31/1991		7.796118859
Springmaid	1991	4/28/1991		6.463691273
Springmaid	1991	5/5/1991		7.370876013
Springmaid	1991	5/5/1991		5.783302718
Springmaid	1991	5/5/1991		6.832235073
Springmaid	1991	5/5/1991		6.577089365
Springmaid	1991	5/5/1991		8.448157891
Springmaid	1991	5/12/1991		6.775536027
Springmaid	1991	6/2/1991		4.932817024
Springmaid	1991	6/9/1991		3.373593252
Springmaid	1991	6/10/1991		5.44310844
Springmaid	1991	6/10/1991		6.151846518
Springmaid	1991	6/11/1991		7.030681735
Springmaid	1991	6/11/1991		8.901750261
Springmaid	1991	9/11/1991		6.406992226
Springmaid	1991	9/11/1991		
Springmaid	1991	9/13/1991		7.484274105
Springmaid	1991	9/16/1991		11.31145973
Springmaid	1991	9/21/1991		8.136313137
Springmaid	1991	9/26/1991		8.391458845
Springmaid	1991	10/4/1991		7.796118859
Springmaid	1991	10/4/1991		6.80388555
Springmaid	1991	10/4/1991		3.288544683
Springmaid	1991	10/4/1991		4.98951607
Springmaid	1991	10/4/1991		3.515340868
Springmaid	1991	10/4/1991		5.556506533
Springmaid	1991	10/4/1991		5.556506533
Springmaid	1991	10/4/1991		6.80388555
Springmaid	1991	10/5/1991		4.734370362
Springmaid	1991	10/5/1991		7.909516952
Springmaid	1991	10/5/1991		5.244661778
Springmaid	1991	10/5/1991		6.378642703

Springmaid	1991	10/5/1991	5.44310844
Springmaid	1991	10/5/1991	6.548739842
Springmaid	1991	10/6/1991	6.492040796
Springmaid	1991	10/13/1991	5.613205579
Springmaid	1991	10/13/1991	5.528157009
Springmaid	1991	10/13/1991	6.605438888
Springmaid	1991	10/13/1991	8.051264568
Springmaid	1991	10/13/1991	4.98951607
Springmaid	1991	10/13/1991	8.391458845
Springmaid	1991	10/13/1991	7.937866475
Springmaid	1991	10/13/1991	6.548739842
Springmaid	1991	10/13/1991	4.280777992
Springmaid	1991	10/14/1991	11.79340162
Springmaid	1991	10/14/1991	6.747186504
Springmaid	1991	10/14/1991	7.484274105
Springmaid	1991	10/14/1991	7.852817906
Springmaid	1991	10/14/1991	9.52543977
Springmaid	1991	10/14/1991	5.44310844
Springmaid	1991	10/14/1991	8.249711229
Springmaid	1991	10/15/1991	2.948350405
Springmaid	1991	10/15/1991	6.917283643
Springmaid	1991	10/15/1991	4.08233133
Springmaid	1991	10/15/1991	2.948350405
Springmaid	1991	10/16/1991	8.61825503
Springmaid	1991	10/16/1991	4.876117978
Springmaid	1991	10/16/1991	8.61825503
Springmaid	1991	10/16/1991	5.783302718
Springmaid	1991	10/16/1991	8.674954076
Springmaid	1991	10/16/1991	3.855535145
Springmaid	1991	10/16/1991	6.35029318
Springmaid	1991	10/16/1991	7.144079828
Springmaid	1991	10/16/1991	5.046215116
Springmaid	1991	10/16/1991	3.742137053
Springmaid	1991	10/16/1991	9.298643585
Springmaid	1991	10/17/1991	5.783302718
Springmaid	1991	10/18/1991	7.370876013
Springmaid	1991	10/18/1991	5.102914163
Springmaid	1991	10/18/1991	7.597672198
Springmaid	1991	10/18/1991	6.435341749
Springmaid	1991	10/18/1991	6.577089365
Springmaid	1991	10/18/1991	6.35029318
Springmaid	1991	10/18/1991	8.61825503
Springmaid	1991	10/18/1991	5.329710348
Springmaid	1991	10/18/1991	4.98951607
Springmaid	1991	10/18/1991	5.783302718
Springmaid	1991	10/19/1991	4.507574177
Springmaid	1991	10/19/1991	4.564273223
Springmaid	1991	10/19/1991	5.783302718
Springmaid	1991	10/19/1991	7.455924582
Springmaid	1991	10/19/1991	5.499807486
Springmaid	1991	10/19/1991	7.682720767
Springmaid	1991	10/19/1991	7.370876013
Springmaid	1991	10/19/1991	8.731653123
Springmaid	1991	10/19/1991	6.888934119
Springmaid	1991	10/19/1991	7.909516952

Springmaid	1991	10/19/1991	6.690487458
Springmaid	1991	10/23/1991	5.669904625
Springmaid	1991	10/23/1991	5.216312255
Springmaid	1991	10/23/1991	8.391458845
Springmaid	1991	10/23/1991	5.216312255
Springmaid	1991	10/23/1991	6.973982689
Springmaid	1991	10/23/1991	8.731653123
Springmaid	1991	10/24/1991	4.309127515
Springmaid	1991	10/25/1991	14.14641204
Springmaid	1991	10/26/1991	9.185245493
Springmaid	1991	10/26/1991	7.030681735
Springmaid	1991	10/26/1991	6.123496995
Springmaid	1991	10/26/1991	5.046215116
Springmaid	1991	10/26/1991	6.35029318
Springmaid	1991	10/27/1991	9.610488339
Springmaid	1991	10/27/1991	5.216312255
Springmaid	1991	10/27/1991	7.115730304
Springmaid	1991	10/27/1991	5.244661778
Springmaid	1991	10/31/1991	13.94796538
Springmaid	1992	5/11/1992	7.597672198
Springmaid	1992	5/14/1992	6.577089365
Springmaid	1992	5/15/1992	9.298643585
Springmaid	1992	5/16/1992	4.791069408
Springmaid	1992	6/21/1992	5.159613209
Springmaid	1992	6/21/1992	4.08233133
Springmaid	1992	6/21/1992	4.479224654
Springmaid	1992	6/21/1992	12.19029494
Springmaid	1992	6/25/1992	5.44310844
Springmaid	1992	7/7/1992	5.216312255
Springmaid	1992	9/10/1992	7.597672198
Springmaid	1992	9/11/1992	5.726603671
Springmaid	1992	9/20/1992	7.342526489
Springmaid	1992	9/27/1992	10.5460226
Springmaid	1992	9/27/1992	7.370876013
Springmaid	1992	9/28/1992	8.533206461
Springmaid	1992	9/28/1992	5.698254148
Springmaid	1992	9/28/1992	6.378642703
Springmaid	1992	10/10/1992	6.123496995
Springmaid	1992	10/13/1992	5.44310844
Springmaid	1992	10/13/1992	8.193012183
Springmaid	1992	10/14/1992	6.548739842
Springmaid	1992	10/14/1992	6.945633166
Springmaid	1992	10/15/1992	5.329710348
Springmaid	1993	5/8/1993	6.888934119
Springmaid	1993	5/8/1993	8.221361706
Springmaid	1993	5/9/1993	5.811652241
Springmaid	1993	5/24/1993	9.695536909
Springmaid	1994	5/24/1994	10.20582833
Springmaid	1994	6/2/1994	8.61825503
Springmaid	1994	6/16/1994	9.752235955
Springmaid	1994	6/16/1994	5.44310844
Springmaid	1994	6/16/1994	8.16466266
Springmaid	1994	6/17/1994	7.25747792
Springmaid	1994	7/8/1994	2.72155422
Springmaid	1994	7/12/1994	11.90679971

Springmaid	1994	7/12/1994	7.144079828
Springmaid	1994	9/13/1994	6.35029318
Springmaid	1994	9/26/1994	9.412041678
Springmaid	1994	10/9/1994	14.96854821
Springmaid	1995	5/14/1995	6.010098903
Springmaid	1995	6/10/1995	13.21087778
Springmaid	1995	6/10/1995	13.77786824
Springmaid	1995	6/11/1995	8.16466266
Springmaid	1995	7/1/1995	4.649321793
Springmaid	1995	7/1/1995	5.046215116
Springmaid	1995	7/3/1995	6.520390319
Springmaid	1995	7/6/1995	7.342526489
Springmaid	1995	9/27/1995	6.35029318
Springmaid	1995	10/3/1995	9.468740724
Springmaid	1996	5/3/1996	7.370876013
Springmaid	1996	5/29/1996	20.92194807
Springmaid	1996	6/4/1996	6.35029318
Springmaid	1996	6/4/1996	7.25747792
Springmaid	1996	6/4/1996	9.52543977
Springmaid	1996	6/17/1996	4.98951607
Springmaid	1996	6/17/1996	8.306410276
Springmaid	1996	6/17/1996	8.788352169
Springmaid	1996	6/17/1996	8.448157891
Springmaid	1996	6/17/1996	8.731653123
Springmaid	1996	6/17/1996	9.97903214
Springmaid	1996	6/21/1996	13.26757682
Springmaid	1996	6/29/1996	7.144079828
Springmaid	1996	7/6/1996	8.731653123
Springmaid	1996	7/7/1996	10.20582833
Springmaid	1996	7/7/1996	11.90679971
Springmaid	1996	7/21/1996	7.71107029
Springmaid	1996	7/26/1996	6.463691273
Springmaid	1997	6/17/1997	9.752235955
Springmaid	1997	6/19/1997	17.80350052
Springmaid	1997	6/21/1997	5.953399856
Springmaid	1997	6/21/1997	9.412041678
Springmaid	1997	6/21/1997	6.010098903
Springmaid	1997	6/21/1997	6.690487458
Springmaid	1997	6/21/1997	9.752235955
Springmaid	1997	6/22/1997	5.89670081
Springmaid	1997	6/22/1997	11.33980925
Springmaid	1997	6/22/1997	9.0718474
Springmaid	1997	6/22/1997	8.16466266
Springmaid	1997	6/22/1997	5.131263686
Springmaid	1997	6/22/1997	4.422525608
Springmaid	1997	6/26/1997	8.958449308
Springmaid	1997	6/27/1997	14.28815966
Springmaid	1997	6/27/1997	7.030681735
Springmaid	1997	6/30/1997	5.44310844
Springmaid	1997	7/3/1997	11.33980925
Springmaid	1997	7/3/1997	6.80388555
Springmaid	1997	7/9/1997	10.68777022
Springmaid	1997	7/21/1997	10.00738166
Springmaid	1997	7/27/1997	7.484274105
Springmaid	1997	7/27/1997	7.484274105

Springmaid	1997	7/27/1997	4.08233133
Springmaid	1997	7/27/1997	7.25747792
Springmaid	1997	8/13/1997	7.597672198
Springmaid	1997	8/16/1997	8.136313137
Springmaid	1997	8/20/1997	7.030681735
Springmaid	1997	8/21/1997	7.030681735
Springmaid	1997	8/27/1997	6.917283643
Springmaid	1997	8/27/1997	7.824468383
Springmaid	1997	9/11/1997	10.88621688
Springmaid	1997	9/13/1997	6.917283643
Springmaid	1997	9/14/1997	6.463691273
Springmaid	1997	9/14/1997	14.60000441
Springmaid	1997	9/16/1997	12.41709113
Springmaid	1997	9/16/1997	7.484274105
Springmaid	1997	9/19/1997	7.824468383
Springmaid	1997	9/20/1997	8.16466266
Springmaid	1997	9/20/1997	
Springmaid	1997	9/20/1997	6.80388555
Springmaid	1997	9/20/1997	8.731653123
Springmaid	1997	9/20/1997	8.61825503
Springmaid	1997	9/20/1997	8.221361706
Springmaid	1997	10/4/1997	14.28815966
Springmaid	1997	10/5/1997	7.484274105
Springmaid	1997	10/9/1997	8.646604553
Springmaid	1998	5/29/1998	5.187962732
Springmaid	1998	5/30/1998	7.994565521
Springmaid	1998	6/11/1998	7.937866475
Springmaid	1998	6/11/1998	8.16466266
Springmaid	1998	6/18/1998	9.241944539
Springmaid	1998	6/18/1998	10.31922642
Springmaid	1998	6/18/1998	12.36039208
Springmaid	1998	6/19/1998	8.816701692
Springmaid	1998	6/21/1998	7.455924582
Springmaid	1998	7/3/1998	
Springmaid	1998	7/19/1998	9.865634048
Springmaid	1998	7/19/1998	15.64893677
Springmaid	1998	10/13/1998	7.25747792
Springmaid	1999	5/21/1999	9.185245493
Springmaid	1999	5/28/1999	5.358059871
Springmaid	1999	6/24/1999	9.015148354
Springmaid	1999	6/24/1999	
Springmaid	1999	6/25/1999	9.213595016
Springmaid	1999	6/25/1999	7.484274105
Springmaid	1999	6/25/1999	6.463691273
Springmaid	1999	6/25/1999	8.930099784
Springmaid	1999	6/27/1999	6.577089365
Springmaid	1999	7/23/1999	4.98951607
Springmaid	1999	7/28/1999	9.241944539
Springmaid	1999	7/30/1999	7.115730304
Springmaid	1999	7/30/1999	11.33980925
Springmaid	1999	7/31/1999	8.16466266
Springmaid	1999	8/22/1999	7.25747792
Springmaid	1999	10/1/1999	11.11301307
Springmaid	1999	10/1/1999	
Springmaid	1999	10/1/1999	7.71107029

Springmaid	1999	10/2/1999	8.249711229
Springmaid	1999	10/5/1999	10.9145664
Springmaid	1999	10/7/1999	5.641555102
Springmaid	1999	10/7/1999	6.690487458
Springmaid	1999	10/7/1999	9.241944539
Springmaid	2000	6/11/2000	10.03573119
Springmaid	2000	6/11/2000	10.20582833
Springmaid	2000	6/11/2000	6.945633166
Springmaid	2000	6/11/2000	5.44310844
Springmaid	2000	6/12/2000	6.435341749
Springmaid	2000	6/23/2000	13.57942158
Springmaid	2000	6/24/2000	8.391458845
Springmaid	2000	6/24/2000	11.87845019
Springmaid	2000	6/25/2000	13.18252825
Springmaid	2000	6/25/2000	9.241944539
Springmaid	2000	6/25/2000	6.917283643
Springmaid	2000	7/3/2000	8.16466266
Springmaid	2000	9/12/2000	12.07689685
Springmaid	2000	9/13/2000	5.669904625
Springmaid	2000	9/24/2000	6.775536027
Springmaid	2000	9/26/2000	11.56660544
Springmaid	2000	9/27/2000	6.662137934
Springmaid	2000	10/3/2000	10.9145664
Springmaid	2000	10/4/2000	5.471457963
Springmaid	2000	10/12/2000	4.876117978
Springmaid	2001	7/6/2001	12.67223684
Springmaid	2001	7/6/2001	9.922333094
Springmaid	2001	8/17/2001	
Springmaid	2001	8/28/2001	8.504856938
Springmaid	2001	9/10/2001	4.649321793
Springmaid	2001	9/10/2001	11.48155687
Springmaid	2001	9/11/2001	11.50990639
Springmaid	2001	9/23/2001	6.577089365
Springmaid	2001	9/24/2001	14.28815966
Springmaid	2001	10/3/2001	6.35029318
Springmaid	2001	10/3/2001	6.35029318
Springmaid	2001	10/11/2001	7.229128397
Springmaid	2001	10/12/2001	7.881167429
Springmaid	2002	6/15/2002	5.726603671
Springmaid	2002	7/4/2002	12.02019781
Springmaid	2002	7/17/2002	
Springmaid	2002	7/18/2002	12.1335959
Springmaid	2002	7/21/2002	8.391458845
Springmaid	2002	7/27/2002	11.56660544
Springmaid	2002	7/30/2002	8.61825503
Springmaid	2002	7/31/2002	8.051264568
Springmaid	2002	8/20/2002	7.852817906
Springmaid	2002	9/18/2002	6.35029318
Springmaid	2002	9/18/2002	7.71107029
Springmaid	2002	9/20/2002	9.922333094
Springmaid	2002	9/21/2002	9.412041678
Springmaid	2003	4/27/2003	8.363109322
Springmaid	2003	6/10/2003	6.463691273
Springmaid	2003	7/5/2003	11.56660544
Springmaid	2003	7/21/2003	9.100196923

Springmaid	2003	7/21/2003		10.5460226
Springmaid	2003	7/27/2003		4.620972269
Springmaid	2003	8/15/2003		11.68000353
Springmaid	2003	10/1/2003		8.051264568
Springmaid	2006	5/6/2006		7.455924582
Springmaid	2006	6/30/2006		8.051264568
Springmaid	2006	6/30/2006		10.48932356