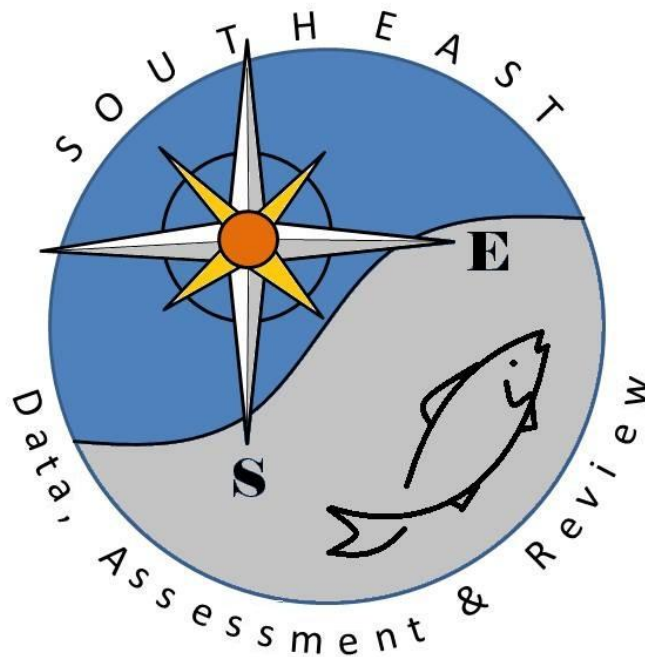


Use of Ultrasonic Telemetry to Estimate Natural and Fishing Mortality of Red Snapper

Topping and Szedlmayer

SEDAR31-DW13

6 August 2012



1 **Draft in review, please do not cite without permission of authors**

2

3 **Use of Ultrasonic Telemetry to Estimate Natural and Fishing Mortality of**
4 **Red Snapper**

5

6

7 Darin T. Topping*¹ and Stephen T. Szedlmayer

8 *Department of Fisheries and Allied Aquacultures, Auburn University, 8300 State Hwy 104,*

9 *Fairhope, AL 36532, USA*

10

11

12

13 Running head: Natural and Fishing Mortality of Red Snapper

14

15

16

17 *Corresponding author: Darin T. Topping, darin.topping@myfwc.com, phone: 562 858-5332,

18 Fax: 352 543-6958

19 ¹Present address: Senator George G. Kirkpatrick Marine Laboratory, Fish and Wildlife Research

20 Institute, 11350 SW 153rd Court, Cedar Key, Florida 32625, USA

21

22

23 **Abstract**

24 An accurate estimate of natural mortality (M) is critical for the management of any fishery,
25 but is typically difficult to directly measure. Mortality rates for red snapper *Lutjanus*
26 *campechanus* ($N = 87$) were estimated from telemetry from December 2005 to June 2009 in the
27 northeastern Gulf of Mexico. At five separate sites an array of five receivers was deployed with
28 one receiver at the center (reef) and four receivers placed 1100 m (or 420 m) north, south, east,
29 and west of center. These arrays enabled the direct estimation of fishing mortality (F), natural
30 mortality (M), and emigration of acoustically tagged red snapper. Out of the 70 fish that
31 remained at the site for the 6-d recovery period, 19 were caught, 10 died naturally, and 28
32 emigrated from the 2-km radius study sites. The Kaplan-Meier (K-M) and staggered entry K-M
33 methods were used to estimate survival from different mortality events, and survival was
34 converted to instantaneous mortality rates. Ricker methods were also used to estimate mortality
35 rates. Overall all years combined total mortality (Z) ranged from 0.43 to 0.50, F from 0.30 to
36 0.38, and M from 0.12 to 0.22. More importantly, M estimated for each year changed from 0 in
37 2006, to 0.23-0.28 in 2007 and 0.17-0.20 in 2008, while annual F rates declined from 0.62-0.80
38 in 2006 to 0.24-0.25 in 2007 and 0.14 – 0.17 in 2008. Thus, in more recent years (2007-2008) M
39 may have increased, while F may have decreased compared to past estimates ($M = 0.1$; $F = 0.35$)
40 used in stock assessments. These higher levels of M coupled with the decreasing rates of F over
41 2006 to 2008 suggests that in recent years restrictive management efforts may have
42 accomplished the goal of reaching $F_{\text{SPR}26\%}$.

43

44

45 INTRODUCTION

46 Historically, red snapper *Lutjanus campechanus* have supported important commercial and
47 recreational fisheries in the Gulf of Mexico and are found over both natural and artificial reef
48 habitats (Camber 1955; Moseley 1966; Beaumariage 1969; Bradley and Bryan 1975; Fable 1980;
49 Stanley and Wilson 1989; Szedlmayer and Shipp 1994; Szedlmayer 1997; Watterson et al. 1998;
50 Patterson et al. 2001; Szedlmayer and Schroepfer 2005; Westmeyer et al. 2007). Although
51 approximately 14,000 of these artificial habitats have been built in the northern Gulf of Mexico,
52 possibly enhancing available habitat for this reef oriented species (Minton and Heath 1998;
53 Gallaway et al. 2009), a recent assessment showed that the red snapper fishery was overfished
54 (SEDAR 2009). To rebuild red snapper stocks, managers set an objective of rebuilding stock
55 biomass to a maximum sustainable yield ($MSY = 25.4$ million pounds) by 2032, which may be
56 accomplished with an instantaneous fishing mortality rate (F) of $F_{msy} = F_{SPR\ 26\%}$ (F at 26 %
57 spawning potential ratio; SEDAR7 2005; DEIS 2006; SEDAR 2009). This objective was based
58 on a conservative assumption of instantaneous natural mortality (M) equal to 0.10/year; however,
59 if M was actually higher, the goal of MSY may be achieved in a shorter period of time
60 (Goodyear 1995; Schirripa and Legault 1999; Slipke and Maceina 2005). Therefore, to allow for
61 an appropriate fishing level for red snapper in the northern Gulf of Mexico, it is important to
62 obtain an accurate estimate of M .

63 The red snapper fishery has continued for well over a century, and like most exploited fish
64 stocks, the level of M for red snapper in the Gulf is not well defined (Camber 1955; Schirripa
65 and Legault 1999). Total mortality (Z) has been obtained for red snapper from fishery
66 independent catch curve analysis (Gitschlag et al. 2003; Szedlmayer 2007); however, the

67 separation of Z into its components of M and F has been difficult. Estimates of M for red snapper
68 have been primarily derived from life history parameter equations based on maximum age, Von
69 Bertalanffy growth coefficient K , and water temperature, with estimates of M for red snapper
70 ranging from 0.02 to 0.40, with 95% confidence intervals from 0.02 to 1.0 (Alverson and Carney
71 1975; Pauly 1980; Nelson and Manooch 1982; Hoenig 1983; Goodyear 1995; Schirripa and
72 Legault 1999). The presently applied value of M (0.10) is based on maximum ages of red
73 snapper around 40 to 50 years (Hoenig 1983; Szedlmayer and Shipp 1994; Schirripa and Legault
74 1999; Wilson and Nieland 2001; SEDAR7 2005). This value of M (0.10) is conservative when
75 compared to estimates of M based on other life history parameters. This uncertainty in M has
76 lead to cautious management practices and severe reductions in fishery quotas (Hood et al.
77 2007). Despite its critical importance in population assessment, direct estimates natural mortality
78 for red snapper have not been reported in the literature.

79 Recent advances in telemetry systems, such as continuous automated monitoring, long-life
80 transmitters, and long distance detection, have allowed researchers to directly estimate natural
81 and fishing mortality in both fresh and saltwater environments (Hightower et al. 2001; Heupel
82 and Simpfendorfer 2002; Pine et al. 2003; Pollock et al. 2004; Young and Isely 2004; Starr et al.
83 2005). With these advances in technology, estimates of mortality are possible for species like red
84 snapper that inhabit large open water systems. In this study, strategic placement of remote
85 telemetry receivers allowed separation of total declines in tagged fish into its component parts of
86 emigration, natural mortality, and fishing mortality.

87

88 **METHODS**

89 **Study Area**

90 The study sites were located 20 to 30 km south of Mobile Bay, Alabama, USA, an area that
91 includes numerous artificial habitats (> 10,000) and a few natural rock-reef habitats (Schroeder
92 et al. 1988; Minton and Heath 1998). Red snapper were tagged on one natural and four artificial
93 habitats. Artificial habitats included a pipeline covered with a concrete mat (A1), a 15-m sunken
94 barge (A2), a 4.4 x 1.3 x 1.2 m steel metal cage (A3), and an M-60 army tank (A4). The natural
95 habitat site (N1) was composed of a 20-m long drowned river bed (~1 m high, ~5 m apart), with
96 undercut banks lined with tree stumps (Figure 1). Depths of the sites ranged from 20–30 m.
97 These sites were a mix of public (published latitude longitude) and private locations (Figure 1).

98

99 **Fish Tagging**

100 Red snapper (> 500 mm total length [TL]) were captured at the sites via hook and line, and
101 tagged with ultrasonic transmitters (Szedlmayer and Schroepfer 2005). Fish were placed in a 70-
102 L container of seawater containing MS-222 (150 mg MS-222/L seawater), and quickly
103 anesthetized (level 4; Summerfelt & Smith 1990). Fish were weighed and measured, and an
104 ultrasonic transmitter was implanted through a small (18 mm) vertical incision into the peritoneal
105 cavity with a No. 11 scalpel slightly above the ventral midline, and then sutured with plain gut
106 suture (Ethicon, no. 2, 3.5 metric). An internal anchor tag (Floy) was also inserted into the
107 incision before it was sutured. Sterile surgical methods and betadine were used throughout the
108 procedure. The fish were released after being held at the surface for a short (~1 min) recovery
109 period (when strong fin and gill movements were observed). Fish were released at the capture
110 site by lowering fish to the bottom with weighted line with an inverted barbless hook that was

111 attached to the fish's lower jaw. Retrieval of the weighted line released the fish at the bottom
112 near the reef.

113 Two types of transmitters were used for this study. Individually coded Vemco transmitters
114 (V16-6L-R64K; code intervals: 20 to 69 s, 16 x 94 mm, battery life: 6 years) were used at sites
115 with Vemco VR2 receivers, and Sonotronics transmitters (CT-05-48; continuous, 16 x 79 mm,
116 battery life: 4 years) were used at site A4 with Sonotronics SUR-1 receivers. Maximum detection
117 ranges were 1600 m for Vemco and 600 m for Sonotronics transmitters. The effects of
118 transmitter implantation on behavior or health of red snapper were assumed to be negligible after
119 a 6 d recovery period, because transmitter weights were < 2% of the total body weight of the fish
120 (Winter 1983; Adams et al. 1998; Brown et al. 1999).

121

122 **Continuous Remote Monitoring**

123 An underwater acoustic receiver array was deployed at each site that included five separate
124 omni-directional receivers (Vemco VR2 or Sonotronics SUR) moored ~5 m above the bottom.
125 For each array, one receiver was located at the release site [Center (C)] and the other four were
126 placed at 1100 m (VR2) or 420 m (SUR) to the North (N), South (S), East (E), and West (W) of
127 the center (Figure 2). Receivers placed at 1100 m (or 420 m) away from the center receiver were
128 predicted to result in complete detection of the fish within a ~2 km (VR2) or 1-km (SUR) radius
129 of the release sites (Szedlmayer and Schroepfer 2005). Receivers were coated with copper based
130 antifouling paint to prevent possible signal occlusion due to biofouling (Heupel et al. 2008).

131 Detection patterns of fish by these arrays identified if a fish was caught (fishing mortality),
132 died (natural mortality), or emigrated. Fishing mortality was also estimated from tag returns by

133 fishers. For example, a fishing mortality was identified by a detection pattern that would show
134 consistent, continuous detections at the center site, followed by a sudden loss of detections at
135 time of capture. Emigration was shown as a decrease in detections of a fish at the center site
136 followed by an increase in detections at a surrounding receiver prior to complete detection loss.
137 A natural mortality was identified when a fish stopped being detected at any outside receiver but
138 was still detected by the center receiver. This natural mortality detection pattern resulted from a
139 lack of fish movement and decrease in detection range from a transmitter that was lying on the
140 bottom. Each site was periodically surveyed with SCUBA divers, aided with a hand-held
141 receiver, to visually identify live fish with external tags and transmitters, and search for
142 stationary transmitters laying on the substrate from fish mortalities. A stationary control
143 transmitter was placed 400 m (VR2) or 150 m (SUR) south of the center location at each site to
144 estimate changes in detection range throughout the study, and enabled contrasts between
145 movements and mortality (Topping and Szedlmayer 2011a).

146

147 **Estimates of Mortality**

148 Several methods were used to calculate mortality rates, including equations defined by Ricker
149 (1975), Kaplan and Meier (1958), and Pollock et al. (1989).

150 *Ricker method.*—Annual exploitation rates (u) were derived from tag returns and telemetry-
151 identified fishing mortalities. Exploitation rates were calculated each month as the number of
152 tagged fish captured that month out of the number of tagged fish at risk of being captured at the
153 start of that month. The number of fish at risk at the start of each month was calculated as the
154 fish present at the start of the previous month minus all mortalities (fishing and natural) plus new

155 fish released during the previous month. An adjustment was made to the number of fish at risk
156 that accounted for non-reporting and natural mortalities of fish that emigrated from the sites. The
157 adjustment was based on the rates (proportion) of fisher non-reporting and natural mortality
158 estimated for fish that remained at the sites, and assumes that fish emigrating will incur the same
159 mortality rates as fish remaining within the receiver detection range at a site. A mean yearly rate
160 was calculated by multiplying the mean monthly u by 12. Expectation of natural death (v) was
161 calculated monthly from telemetry-detected natural mortalities at each site, and is defined as the
162 number of tagged fish dying naturally that month out of the number of tagged fish at risk of
163 dying at the start of that month. The number of fish at risk of dying at the start of each month
164 was calculated as the fish present at the start of the previous month minus all mortalities (fishing
165 and natural) plus new fish released during the previous month. Also, all fish that emigrated the
166 previous month were removed from the fish at risk so that natural death rate was only calculated
167 for fish remaining at the site, because natural mortality could not be detected for fish that
168 emigrated. To estimate annual rates of instantaneous fishing mortality (F) and natural mortality
169 (M), two estimates of instantaneous total mortality (Z) were applied. Total mortality (Z) was
170 estimated from the present telemetry derived estimates of u and v , and from catch-curve analysis
171 in previous studies ($Z = 0.54$; Gitschlag et al. 2003; Szedlmayer 2007). Annual survival (S) was
172 either calculated from the catch-curve or from u and v .

173 Three separate models were used to estimate M and F (Ricker 1975). Ricker model (1),
174 where $F = u Z / (1 - S)$ was used to calculate F from the telemetry-based u and the catch curve
175 derived $Z = 0.54$ (with $S = e^{-Z}$), then M was estimated by subtraction ($M = Z - F$). Ricker model
176 (2), where $M = v Z / (1 - S)$ was used to calculate M from the telemetry-based v and the catch

177 curve derived $Z = 0.54$ (with $S = e^{-Z}$), then F was estimated by subtraction ($F = Z - M$). In Ricker
 178 model (3), both M and F were calculated separately from telemetry-based estimates of u , v , and
 179 Z , using Ricker models (1) and (2), with $S = 1 - (u + v)$ and $Z = \log_e(S)$.

180

181 *Kaplan-Meier method.*—Mortality rates were calculated from the survival function, $S(t)$,
 182 estimated from the product limit method of Kaplan and Meier (1958), which gives the
 183 probabilities (S) of surviving a specified event (i.e. fishing, natural, or total mortality) over a
 184 given time (t). This method allows for removal (right-censor) of fish that were not subject to the
 185 particular mortality under analysis. For example, when estimating survival from natural mortality
 186 events, fish caught and fish that emigrate from the site are censored from the analysis at the point
 187 of that event occurring (i.e. fish did not experience a natural mortality up to the time of the
 188 emigration or capture and are no longer at risk of a natural mortality). The Kaplan-Meier (K-M)
 189 event analysis method was applied using the survival function:

$$190 \quad \hat{S}(t) = \prod_{t_j \leq t} (1 - d_j / r_j);$$

191 the probability of surviving to t , where t is the time over which survival is estimated from the
 192 product of the conditional probabilities of survival at each event point j , and where d_j represents
 193 the number of individuals experiencing an event and r_j represents the number of individuals at
 194 risk of an event at time t_j (Kaplan and Meier 1958; Allison 1995; Schroepfer and Szedlmayer
 195 2006).

196 The SAS Lifetest procedure was used to estimate the survival to t assuming fish are released
 197 on the same day and examines the entire distribution of event and censor times (Allison 1995).
 198 Survival was then estimated at 365 days. By analyzing event times with respect to the same start

199 date, the effects of low sample size (in the beginning of the study) on K-M survival estimates are
 200 removed. Survival functions were estimated separately for M , F , and Z . For example, for survival
 201 from fishing mortality (event), fish that emigrated and died naturally were right censored from
 202 the fish at risk. In this method, individuals censored are assumed to have the same prospect of
 203 survival as individuals remaining at the study site. Since survival estimates are independently
 204 derived by only considering the specified mortality event, instantaneous annual mortality rates
 205 were calculated using the following equations:

$$206 \quad F = -\log_e[S_F(365)],$$

207 where survival is based on probability of surviving fishing mortality over a year;

$$208 \quad M = -\log_e[S_M(365)],$$

209 where survival is based on probability of surviving natural mortality over a year;

$$210 \quad Z = -\log_e[S_Z(365)],$$

211 where survival is based on probability of surviving any mortality over a year. Variances for K-M
 212 survival estimates were defined by Cox and Oakes (1984) as

$$213 \quad \text{Var}[\hat{S}(t)] = [\hat{S}(t)]^2 [1 - \hat{S}(t)] / r(t),$$

214 and 95% confidence intervals for K-M were defined by Pollock et al. (1989) as

$$215 \quad \hat{S}(t) \pm 1.96[\text{var } \hat{S}(t)]^{1/2}.$$

216 Ranges of mortality rates were calculated from the 95% confidence interval ranges of the
 217 survival functions at a time of 365 d.

218

219 *Staggered entry method.*—The staggered entry method is a modification of the previous K-M
 220 survival function method and has been applied to telemetry data (Pollock et al. 1989; Heupel and

221 Simpfendorfer 2002). The staggered entry equation is similar to the K-M, with the exception that
222 this method allows individuals to enter at any time during the study. Individuals that emigrated
223 or did not experience the specified mortality event over the given time period were right
224 censored as discussed above (e.g., a fish emigrating 200 d after release was known to survive a
225 mortality event for at least 200 d). In the staggered entry method, the number of fish at risk could
226 fluctuate from period to period depending on the number of fish present, new releases
227 (additions), and removals from the sites (fishing mortality, natural mortality, and emigrations) in
228 the previous period. The survival function was estimated by taking the product of the conditional
229 survival probabilities calculated every 30-d period up to the 1230-d study length (i.e. 42 time
230 periods). The mortality rate equations were adjusted to estimate an annual survival $S(365)$ from
231 the survival probabilities at the end of the study $S(1230)$ by applying an exponent of $365/1230$
232 (e.g. F , M , or $Z = -\log_e[S(1230)^{365/1230}]$; Starr et al. 2005).

233

234 RESULTS

235 Red snapper ($N = 87$) were continuously monitored at five different sites (A1-A4, N1; [Figure](#)
236 [1](#)) for 1230 d (December 2005 to May 2009). Total length (TL) of tagged red snapper ranged
237 from 501 to 860 mm, with a mean of 639 mm (SD, 85 mm). These 87 fish remained present at
238 the site, emigrated, died, or were removed by fishers, as determined by detections from the five
239 receivers at each site and by fisher returns (e.g. [Figure 3](#); [Table 1](#)). Event times (or minimum
240 residence time if still present) ranged from 0 to 1020 d ([Table 1](#)). Of the 87 tagged fish, 17 either
241 left the site or died within the first 6 d after release (14 emigrated, 2 died, and 1 unknown).
242 These events within the first 6 d post release were considered tagging artifacts, and no fish that

243 left within 6 d were detected again or returned by fishers. Thus, the 70 remaining fish were used
244 for mortality rate estimations, and data were analyzed up to 27 May 2009 (just prior to the 2009
245 fishing season).

246 There were 14 fish still present at the various sites at the end of the study (Table 1).
247 Additional emigrations were detected ($n = 27$) after the 6-d post-release period, with 2 fish in
248 2006, 9 fish in 2007, 14 fish in 2008, and 2 fish in 2009 leaving the site from 28 to 758 d after
249 release. Six fish from the 27 emigrations were last detected at a site when one of the five outer
250 array receivers was not functioning, but were assumed to have emigrated based on the detections
251 from other receivers at that site (unknowns [U]; Table 1). No natural mortalities were detected in
252 2006, but there were five in 2007, five in 2008, and none in 2009 (up to June 2009). There were
253 19 fishing mortalities at four sites (A1-A4, $F = 0$ at N1), with 17 fish returned by fishers and 2
254 estimated from telemetry detection data. Nine fish were caught in 2006, five in 2007, and five in
255 2008. Of the nine fish caught in 2006, all were caught at site A1 in April, May, and June, and six
256 were captured by one fisher. This fisher admittedly targeted this site. Overall, site A1 had the
257 highest fishing mortality (13 fish out of 20 released). Targeting of this study site may have
258 increased exploitation rates beyond actual levels in 2006 ($u = 0.50$, April; 0.75 , June), as few fish
259 were at risk during the early part of this study (10 fish in April, 5 in May, and 6 in June). Both
260 the Ricker and staggered entry models are sensitive to low sample sizes in the beginning of the
261 study which resulted in negative or zero M values, and F values greater than 1.0. Because of the
262 fishing mortality bias from this particular fisher, these captures were censored in the Ricker and
263 right censored in the staggered entry analysis, and not included in the fishing mortality estimates

264 for these models, but the mortalities from this directed fisher were included K-M mortality
265 estimates.

266

267 **Ricker Mortality Estimates**

268 The mean yearly exploitation rate (u) was 0.25/year (SE, 0.12). The u decreased each year,
269 from 0.55/year (2006) to 0.19/year (2007) to 0.12/year (2008). The fisher capture reporting rate
270 was > 90% based on detections and tag returns, with only 2 fish out of 19 not returned by a
271 fisher. Natural death rate (v) over all sites was 0.11/year (SE, 0.04). No natural mortality was
272 detected in 2006, v was 0.22/year in 2007, and 0.17/year in 2008.

273 The Ricker model (1) mortality estimates were $F = 0.32$ and $M = 0.22$ (from subtraction),
274 based on a Z of 0.54 (Gitschlag et al. 2003; Szedlmayer 2007) and $u = 0.25$ /year (Table 2). The
275 Ricker model (2) mortality estimates were $M = 0.14$ and $F = 0.40$ (from subtraction), based on
276 the same $Z = 0.54$ and $v = 0.11$ /year (Table 2). Ricker model (3) mortality estimates were $F =$
277 0.30 and $M = 0.14$, based on estimates of $u = 0.25$ /year, $v = 0.11$ /year, and $Z = 0.44$ from the
278 present study (Table 2). Ricker model (3) was used to obtain mortality estimates by year from
279 above yearly estimates of u and v . In 2006, $F = 0.80$ and $M = 0.0$; in 2007, $F = 0.25$ and $M =$
280 0.28 ; and, in 2008, $F = 0.14$ and $M = 0.20$ (Table 3).

281

282 **Kaplan-Meier Mortality Estimates**

283 The estimation of mortality rates using the Kaplan-Meier (K-M) method were based on all
284 data ($n = 70$ fish). All fish were considered to be released on the same start date, and as such
285 there was not artificial inflation of mortality rates when few fish were at risk at the beginning of

286 the study. The overall rate of survival (S) from all mortality (fishing + natural) was 61% at 365 d
287 ($S_Z[365]$) or $Z = 0.50$ (Table 2; Figure 4). When survival from fishing mortality was estimated,
288 $S_F(365) = 68\%$ and $F = 0.38$ (Table 2; Figure 5). When survival from natural mortality was
289 estimated, $S_M(365) = 89\%$ and $M = 0.12$ (Table 2; Figure 5). If the K-M method was applied with
290 the recaptures from the fisher that targeted site A1 removed (right censored), $Z = 0.39$ and $F =$
291 0.27 .

292 If the K-M method is applied to only 2007 and 2008 data ($n = 44$ fish), F would also decrease
293 from 0.45 to 0.31, but this would exclude most of the fish released at site A1. Site A1 had the
294 most fishing mortalities (13 of 20 fish), and was the first site established. If all sites except A1
295 were considered ($n = 50$ fish), F would be 0.20; however, if F was based only on site A1, F
296 would be 1.0. Site A4 had the second highest F (0.56), and was a public site. Site N1 was the last
297 site established (December 2007), and showed the lowest $F = 0$, compared to other sites.

298

299 **Staggered Entry Mortality Estimates**

300 The staggered entry method also showed sensitivity to low sample size in the beginning six
301 months of this study as shown in the Ricker method. After the first six months (June 2006), the
302 probability of survival (i.e., $S_F[180]$) dropped to 10% when all fishing mortalities were
303 considered, resulting in an F of 2.3, which is an unrealistic estimate. After removal of the
304 captures from the biased fisher, fishing mortality decreased, $S_F(365) = 74\%$ and $F = 0.31$ (Table
305 2; Figure 6). While no natural deaths were detected in 2006 (probably due to low sample size),
306 natural deaths were spread out relatively evenly in subsequent years. Survival from a natural
307 mortality using the K-M staggered entry was $S_M(365) = 89\%$, $M = 0.12$; and, survival from all

308 mortality was $S_Z(365) = 65\%$, $Z = 0.43$ (Table 2; Figure 7, 8). Mortality rate estimates based on
309 the staggered entry method varied by year (Table 3).

310

311 **DISCUSSION**

312 Ultrasonic telemetry allowed continuous, long-term (~ 3 years) monitoring of tagged red
313 snapper at the study sites. The arrangement of receivers enabled the estimation of emigration,
314 natural mortality, and fishing mortality at various habitat structures. An important advancement
315 in the present study was the use of stationary control transmitters at each site that allowed
316 monitoring detection range changes due to environmental factors throughout the study.

317 Knowledge of detection range and comparisons between detection patterns of stationary (dead
318 fish) and moving (live fish) transmitters were necessary for identifying emigration and mortality
319 events (Topping and Szedlmayer 2011a). Most studies that employed telemetry techniques to
320 estimate mortality of relatively mobile species (e.g., striped bass, blacktip sharks) have been
321 successful in semi-closed systems and generally have estimated natural mortalities based on lack
322 of movement (Hightower et al. 2001; Heupel and Simpfendorfer 2002; Young and Isely 2004).

323 For example, Heupel and Simpfendorfer (2002) were able to directly detect fishing and natural
324 mortality of juvenile blacktip sharks in Terra Ceia bay by using a large number of VR2 receivers
325 to continuously monitor movement, lack of movement (mortality), sudden disappearance
326 (capture), and emigration of individuals from the mouth of the bay. More difficulty is
327 encountered when attempting to estimate mortality with telemetry in open ocean systems (vs
328 closed), and has been limited to fish that show moderate residence (Starr et al. 2005). In the
329 present study, high site fidelity of red snapper to reef sites (Szedlmayer and schroepfer 2005;

330 Schroepfer and Szedlmayer 2006; Topping and Szedlmayer 2011a, b) provided an opportunity to
331 directly estimate mortality rates and emigration of red snapper for the first time in a large open
332 water system (i.e., northern continental shelf of the Gulf of Mexico).

333 Values of F for some stock assessments are dependent on M , in which M is determined
334 indirectly from the life history parameter equations, with F only as accurate as M (Manooch et al.
335 1998). Estimates of M derived indirectly from life history parameters for red snapper from the
336 northern Gulf of Mexico (Table 4; e.g. maximum age, maximum weight, K , water temperature)
337 can range from 0.08 to 0.36 (Chen and Watanabe 1989; Pauly 1980; Hoenig 1983; Peterson and
338 Wroblewski 1984; Jensen 1996; Quinn and Deriso 1999; Slipke and Maceina 2005; Wilson and
339 Nieland 2001; Szedlmayer 2007). The most recent red snapper fishery assessment used a
340 conservative M of 0.10, which was lowered from the 0.20 used in an earlier assessment
341 (Goodyear 1995; Schirripa and Legault 1999; SEDAR7 2005; SEDAR 2009). The predicted M
342 was lowered due to evidence of older fish (up to 53 years) in the stock (Szedlmayer and Shipp
343 1994; Schirripa and Legault 1999; Wilson and Nieland 2001). Over all years combined the direct
344 estimates of M from telemetry methods in this study (0.12–0.22; 95% CL = 0.04–0.27; Table 2)
345 were consistent with estimates from the indirect methods (0.08–0.36; Table 4), but higher than
346 the estimate of M used in the most recent assessment (0.10). The present study provides the only
347 empirically derived estimates of M for red snapper, however such estimates will probably change
348 from year to year depending on environmental conditions or from possible increases in density-
349 dependent mortality associated with population increase during the red snapper stock rebuilding
350 phase (Rose et al. 2001; Gazey et al. 2008).

351 Detection of changes in natural mortality rates among years or shorter periods of time
352 (Young and Isely 2004) or during catastrophic environmental conditions (e.g. hurricanes or dead
353 zones) could be efficiently assessed with the present telemetry methods. There were no natural
354 deaths detected in 2006 probably due to the combination of low sample size and the high number
355 of released fish caught by fishers early in the study. In the following years, M was higher based
356 on the staggered entry method (0.23 in 2007; 0.17 in 2008). The Ricker model-3 also showed
357 higher estimates of in 2007 ($M = 0.28$) and 2008 (0.20) than 2006 (0). We suggest that these later
358 estimates of M (0.17 to 0.28) are probably better estimates of actual red snapper natural mortality
359 rates, because of greater sample size and reduced fishing mortality.

360 Over all years combined the direct estimates of F in this study (0.30–0.40; 95% CL 0.24–
361 0.64) were similar to $F = 0.35$ for red snapper from the 2005 stock assessment (SEDAR7 2005)
362 and $F = 0.29$ to 0.47 from the 1999 stock assessment (Schirripa and Legault 1999). However, F
363 showed substantial annual variation during this study. The higher exploitation rates in 2006 for
364 the present study may be lower sample sizes inflating exploitation, but also may reflect changes
365 in fishing regulations among years. Total allowable catch (TAC) quotas were decreased from 9.1
366 million pounds (MP) in 2006, to 6.5 MP in 2007, and to 5.0 MP in 2008. These reductions in
367 TAC resulted in more restrictive seasonal and bag limits. For example, in 2006 the federal waters
368 were open to recreational red snapper fishing for seven months (April to October 2006) with a
369 four fish bag limit (407 mm TL minimum size), in 2007 a two fish bag limit was instituted, and
370 in 2008 the fishing season was limited to two months (June and July 2008). Though it is difficult
371 to compare the first year of the study due to low sample size, the decreasing pattern of fishing
372 mortality from 2006 to 2008 in the present telemetry study appeared to reflect the changes in

373 fishery management regulations. Fishing mortality (F) was 0.80 in 2006, 0.25 in 2007, and 0.14
374 in 2008 (Ricker model 3).

375 Detection of a fishing mortality event based on telemetry detection data was validated by
376 fisher returns ($n = 17$ fisher returns out of 19 telemetry detected fishing mortalities). Confidence
377 in the accuracy of detection of M was $< F$ since we were not able to retrieve all of the
378 transmitters from dead fish. However, even when independently estimating each type of
379 mortality event, there was a convergence of mortality rates estimated among the various methods
380 (low variability), which increases confidence in the accuracy of M . Total mortality (Z) estimates
381 showed low variance among the methods used, with estimates of 0.50 (K-M), 0.43 (staggered
382 entry), and 0.44 (Ricker model 3), which are similar to a Z of 0.54 obtained by both Gitschlag et
383 al. (2003) and Szedlmayer (2007) from catch curves of completely separate fishery independent
384 surveys. Although the different methods of estimating mortality showed similar results, there
385 were advantages and disadvantages of each method. The staggered entry (modified K-M;
386 Pollock et al. 1989) and K-M methods simplify calculations, with only data needed on the time
387 from release till an event, an emigration, or if a fish is still present. The staggered entry method
388 is suggested as the preferred method if there is a reasonably high initial release of individuals
389 into the study, and this method allows for additional individuals to be added throughout the study
390 (Heupel and Simpfendorfer 2002). Also, this would be the best method to show seasonal or
391 yearly fluctuations in survival if there are similar sample sizes among periods. The confidence
392 intervals used for the staggered entry method narrowed as the study progressed because sample
393 size increased as more fish were released over the study. The K-M method was the least sensitive
394 to fluctuations in sample size and periods of high mortality. The K-M method showed narrower

395 95% confidence limits in the beginning of the study due to the “release” of all fish ($n = 70$) at
396 day 0. Accuracy of this method is affected by the length of the study, with confidence increasing
397 as more fish progress through the study to experience an event.

398 The traditional Ricker (1975) methods using u or v rates and some estimate of Z to calculate
399 F or M , were similar to the staggered entry method. The same time periods (30 d) were used to
400 estimate u and v (Ricker), and survival (staggered) with similar numbers of fish at risk at the
401 beginning of each period. Since the estimates of F may have been more accurate (than M) due to
402 validation of detection data with fisher returns, Ricker model 1 ($u = 0.25/\text{year}$, $Z = 0.54$) may
403 give the most accurate estimate of M (0.22). Again, the major disadvantage with the Ricker
404 method is overestimating exploitation rates when few fish are at risk, as in the beginning of this
405 study.

406 Since M represents a measure of the longevity and natural rate of replacement of the
407 population, higher values of M may allow for higher catches in the fishery; however, if the
408 fishery is managed assuming a high M when its value is much lower, there may be significant
409 problems (Schirripa and Legault 1999; Slipke and Maceina 2005). Over all years combined the
410 natural mortality rates estimated in this study (0.12–0.22) were slightly above to more than
411 double the $M = 0.10$ used in past red snapper fishery assessments. More importantly, M
412 estimated for each year changed from 0 in 2006, to 0.23-0.28 in 2007 and 0.17-0.20 in 2008.
413 Thus, the present study suggest that natural mortality is higher than past estimates, and may have
414 actually increased to as much as three times the past rates used in stock assessments during the
415 red snapper rebuilding period under restrictive management. This higher level of M coupled with
416 the decreasing rates of F in 2007 (0.24-0.25) and 2008 (0.14-0.17) suggests that the goal of

417 $F_{SPR26\%}$ may have been reached in recent years and further reductions of fishing quotas may be
418 unnecessary.

419

420

421 REFERENCES

422 Adams, N. S., D. W. Rondorf, S. D. Evans, and J. E. Kelly. 1998. Effects of surgically and
423 gastrically implanted radio transmitters on growth and feeding behavior of juvenile chinook
424 salmon. Transactions of the American Fisheries Society. 127:128–136.

425 Allison, P. D. 1995. Survival analysis using the SAS[®] System: a practical guide. SAS Institute,
426 Cary, North Carolina.

427 Alverson, D. L., M. J. Carney. 1975. A graphic review of the growth and decay of population
428 cohorts. Journal du Conseil International pour l'Exploration de la Mer 36:133–143.

429 Beaumariage, D.S. 1969. Returns from the 1965 Schlitz tagging program including a cumulative
430 analysis of previous results. Florida Department of Natural Resources Technical Series 59:1–
431 38.

432 Bradley, E., and C. E. Bryan. 1975. Life history and fishery of the red snapper (*Lutjanus*
433 *campechanus*) in the Northwestern Gulf of Mexico. Gulf and Caribbean Fisheries Institute
434 27:77–106.

435 Brown, R. S., J. C. Steven, W. G. Anderson, and R. S. McKinley. 1999. Evidence to Challenge
436 the “2% Rule” for Biotelemetry. North American Journal of Fisheries Management 19:867–
437 871.

- 438 Camber, C. I. 1955. A survey of the red snapper fishery of the Gulf of Mexico, with special
439 reference to the Campeche Banks. Florida Board of Conservation Technical Series 12:1–64.
- 440 Chen, S., and S. Watanabe. 1989. Age dependence and natural mortality coefficient in fish
441 population dynamics. *Nippon Suisan Gakkaishi* 55:205–208.
- 442 Cox, D. R., and D. Oakes. 1984. Analysis of survival data. Chapman and Hall, New York.
- 443 DEIS. 2006. Draft environmental impact statement to evaluate alternatives to set Gulf of Mexico
444 red snapper total allowable catch and reduce bycatch in the Gulf of Mexico directed and
445 shrimp trawl fisheries. NOAA, NMFS, St. Petersburg, Florida USA.
- 446 Fable Jr, W. A. 1980. Tagging studies of red snapper (*Lutjanus campechanus*) and vermilion
447 snapper (*Rhomboplites aurorubens*) off the South Texas coast. *Contributions in Marine*
448 *Science* 23:115–121.
- 449 Gallaway, B. J., S. T. Szedlmayer, and W. J. Gazey. 2009. A life history review for red snapper
450 in the Gulf of Mexico with an evaluation of the importance of offshore petroleum platforms
451 and other artificial reefs. *Reviews in Fisheries Science* 17:48–67.
- 452 Gazey, W. J., B. J. Gallaway, J. G. Cole, and D. A. Fournier. 2008. Age composition, growth,
453 and density–dependent mortality in juvenile red snapper estimated from observer data from
454 the Gulf of Mexico penaeid shrimp fishery. *North American Journal of Fisheries*
455 *Management* 28:1828–1842.
- 456 Gitschlag, G. R., M. J. Schirripa, and J. E. Powers. 2003. Impacts of red snapper mortality
457 associated with the explosive removal of oil and gas structures on stock assessments of red
458 snapper in the Gulf of Mexico. *In Fisheries, reefs, and offshore development*, Stanley, D. R.,
459 and A. Scarborough-Bull, Editors. American Fisheries Society, Symposium 36:83–94.

- 460 Goodyear, C. P. 1995. Red snapper in U.S. waters of the Gulf of Mexico. NMFS-SEFSC
461 Contribution: MIA-94/94-63. Miami, Florida.
- 462 Heupel, M. R., and C. A. Simpfendorfer. 2002. Estimation of mortality of juvenile blacktip
463 sharks, *Carcharhinus limbatus*, within a nursery area using telemetry data. Canadian Journal
464 of Fisheries and Aquatic Sciences 59:624–632.
- 465 Heupel, M. R., K. L. Reiss, B. G. Yeiser, and C. A. Simpfendorfer. 2008. Effects of biofouling
466 on performance of moored data logging acoustic receivers. Limnology and Oceanography:
467 Methods 6:327–335.
- 468 Hightower, J. E., J. R. Jackson, K. H. Pollock. 2001. Use of telemetry methods to estimate
469 natural and fishing mortality of striped bass in Lake Gaston, North Carolina. Transactions of
470 the American Fisheries Society 130:557–567.
- 471 Hoenig, J. M. 1983. Empirical use of longevity data to estimate mortality rates. Fishery Bulletin
472 82:898–903.
- 473 Hood, P. B., A. J. Strelcheck, and P. Steele. 2007. A history of red snapper management in the
474 Gulf of Mexico. Pages 267–284 in W. F. Patterson, III, J. H. Cowan, Jr., G. R. Fitzhugh, and
475 D. L. Nieland, editors. Red snapper ecology and fisheries in the U.S. Gulf of Mexico.
476 American Fisheries Society Symposium, 60, Bethesda, Maryland.
- 477 Jensen, A. L. 1996. Beverton and Holt life history invariants result from optimal trade-off of
478 reproduction and survival. Canadian Journal of Fisheries and Aquatic Sciences 53:820–822.
- 479 Kaplan, E. L., and P. Meier. 1958. Nonparametric estimation from incomplete observations.
480 Journal of the American Statistical Association 53:457–481.

- 481 Manooch III, C. S., J. C. Potts, D. S. Vaughan, and M. L. Burton. 1998. Population assessment
482 of the red snapper from the southeastern United States. *Fisheries Research* 38:19–32.
- 483 Minton, R. V., and S. R. Heath. 1998. Alabama’s artificial reef program: building an oasis in the
484 desert. *Gulf of Mexico Science* 16:105–106.
- 485 Moseley, F. N. 1966. Biology of the red snapper, *Lutjanus aya* Block, of the northwestern Gulf
486 of Mexico. *Publications of the Institute of Marine Science University of Texas* 11:90–101.
- 487 Nelson, R. S., and C. S. Manooch III. 1982. Growth and mortality of the red snapper, *Lutjanus*
488 *campechanus*, in the west-central Atlantic and northern Gulf of Mexico. *Transactions of the*
489 *American Fisheries Society* 111:465–475.
- 490 Patterson III, W. F., J. C. Watterson, R. L. Shipp, and J. H. Cowan Jr. 2001. Movement of tagged
491 red snapper in the Northern Gulf of Mexico. *Transactions of the American Fisheries Society*
492 130:533–545.
- 493 Pauly, D. 1980. On the interrelationship between natural mortality, growth parameters, and mean
494 environmental temperature in 175 fish stocks. *Journal du Conseil International pour*
495 *l’Exploration de la Mer* 39:175–192.
- 496 Peabody, M. B. 2004. The fidelity of red snapper (*Lutjanus campechanus*) to petroleum
497 platforms and artificial reefs in the northern Gulf Of Mexico. Master’s Thesis. Louisiana
498 State University, Baton Rouge, Louisiana.
- 499 Peterson, I., and J. S. Wroblewski. 1984. Mortality rate of fishes in the pelagic ecosystem.
500 *Canadian Journal of Fisheries and Aquatic Sciences* 41:1117–1120.

- 501 Pine, W. E., K. H. Pollock, J. E. Hightower, T. J. Kwak, and J. A. Rice. 2003. A review of
502 tagging methods for estimating fish population size and components of mortality. *Fisheries*
503 28:10–23.
- 504 Pollock, K. H., H. Jiang, and J. E. Hightower. 2004. Combining telemetry and fisheries tagging
505 models to estimate fishing and natural mortality rates. *Transactions of the American*
506 *Fisheries Society* 133:639–648.
- 507 Pollock, K. H., S. R. Winterstein, C. M. Bunck, and P. D. Curtis. 1989. Survival analysis in
508 telemetry studies: the staggered entry design. *Journal of Wildlife Management* 53:7–15.
- 509 Quinn II, T. J., and R. B. Deriso. 1999. *Quantitative fish dynamics*. Oxford University Press,
510 New York.
- 511 Ricker, W. E. 1975. *Computation and interpretation of biological statistics of fish populations*.
512 *Fisheries Research Board of Canada Bulletin* 191.
- 513 Rose, K. A., J. H. Cowan Jr, K. O. Winemiller, R. A. Myers, and R. Hillborn. 2001.
514 Compensatory density dependence in fish populations: importance, controversy,
515 understanding and prognosis. *Fish and Fisheries* 2:293–327.
- 516 Schroeder, W. W., A. W. Shultz, and J. J. Dindo. 1988. Inner-shelf hardbottom areas,
517 northeastern Gulf of Mexico. *Gulf Coast Association of Geological Societies Transactions*
518 38: 535–541.
- 519 Schroepfer, R. L., and S. T. Szedlmayer. 2006. Estimates of residence and site fidelity for red
520 snapper *Lutjanus campechanus* on artificial reefs in the northeastern Gulf of Mexico.
521 *Bulletin of Marine Science* 78:93–101.

- 522 Schirripa, M. J., and C. M. Legault. 1999. Status of the red snapper in U.S. waters of the Gulf of
523 Mexico: updated through 1998. Southeast Fisheries Science Center, Miami Laboratory,
524 NMFS, SFD-99/00-75.
- 525 SEDAR7. 2005. Stock assessment report of SEDAR 7, Gulf of Mexico Red Snapper. NMFS,
526 SEFSC, NOAA, Charleston, South Carolina. Available: <http://www.sefsc.noaa.gov>.(January
527 2009).
- 528 SEDAR. 2009. Stock Assessment of Red Snapper in the Gulf of Mexico: SEDAR Update
529 Assessment. NMFS, SEFSC, NOAA, Miami, Florida. Available:
530 <http://www.sefsc.noaa.gov>.(January 2009).
- 531 Slipke, J. W., and M. J. Maceina. 2005. Fisheries analyses and simulation tools (FAST 2.1).
532 Auburn University, Auburn, Alabama USA.
- 533 Stanley, D. R., and C. A. Wilson. 1989. Utilization of offshore platforms by recreational
534 fishermen and SCUBA divers off the Louisiana coast. *Bulletin of Marine Science* 44:767–
535 775.
- 536 Starr, R. M., V. O'Connell, S. Ralston, L. Breaker. 2005. Use of acoustic tags to estimate natural
537 mortality, spillover, and movements of lingcod (*Ophiodon elongatus*) in a Marine Reserve.
538 *Marine Technology Society Journal* 39:19–30.
- 539 Summerfelt, R. C., and L. S. Smith. 1990. Anesthesia, surgery, and related techniques. In:
540 Schreck, C. B., and P. B. Moyle (eds) *Methods for Fishery Biology*. Bethesda: American
541 Fisheries Society, 213–272.
- 542 Szedlmayer, S. T. 1997. Ultrasonic telemetry of red snapper, *Lutjanus campechanus*, at artificial
543 reef sites in the northeast Gulf of Mexico. *Copeia* 1997:846–850.

- 544 Szedlmayer, S. T. 2007. An evaluation of the benefits of artificial habitats for red snapper,
545 *Lutjanus campechanus*, in the northeast Gulf of Mexico. Proceedings of the Gulf and
546 Caribbean Fisheries Institute 59:223-229.
- 547 Szedlmayer, S. T., and R. L. Schroepfer. 2005. Long-term residence of red snapper on artificial
548 reefs in the northeastern Gulf of Mexico. Transactions of the American Fisheries Society
549 134:315–325.
- 550 Szedlmayer, S. T., and R. L. Shipp. 1994. Movement and growth of red snapper, *Lutjanus*
551 *campechanus*, from an artificial reef area in the Northeastern Gulf of Mexico. Bulletin of
552 Marine Science 55:887–896.
- 553 Topping, D. T., and S. T. Szedlmayer. 2011a. Site fidelity, residence time and movements of red
554 snapper *Lutjanus campechanus* estimated with long-term acoustic monitoring. Marine
555 Ecology Progress Series 437: 183–200.
- 556 Topping, D. T., and S. T. Szedlmayer. 2011b. Home range and movement patterns of red
557 snapper (*Lutjanus campechanus*) on artificial reefs. Fisheries Research
558 doi:10.1016/j.fishres.2011.08.013.
- 559 Watterson, J. C., W. F. Patterson III, R. L. Shipp, and J. H. Cowan Jr. 1998. Movement of red
560 snapper, *Lutjanus campechanus*, in the north central Gulf of Mexico: potential effects of
561 hurricanes. Gulf of Mexico Science 1998:92–104.
- 562 Westmeyer, M. P., C. A. Wilson, and D. L. Nieland. 2007. Fidelity of red snapper to petroleum
563 platforms in the northern Gulf of Mexico. Pages 105–121 in W. F. Patterson, III, J. H.
564 Cowan, Jr., G. R. Fitzhugh, and D. L. Nieland, editors. Red snapper ecology and fisheries in
565 the U.S. Gulf of Mexico. American Fisheries Society Symposium, 60, Bethesda, Maryland.

- 566 Wilson, C. A., and D. L. Nieland. 2001. Age and growth of red snapper, *Lutjanus campechanus*,
567 from the northern Gulf of Mexico off Louisiana. *Fishery Bulletin* 99:653–664.
- 568 Winter, J. D. 1983. Underwater biotelemetry. Pages 371–395 In: L. A. Nielsen and D. L.
569 Johnson, editors. *Fisheries techniques*. American Fisheries Society, Bethesda, Maryland.
- 570 Young, S. P., and J. J. Isely. 2004. Temporal and spatial estimates of adult striped bass mortality
571 from telemetry and transmitter return data. *North American Journal of Fisheries Management*
572 24:1112–1119.
- 573

574 Table 1. Summary of release information (total length, TL; weight, Wt) and number of days
 575 (event time) from release until occurrence of the specified event (emigration = E, fishing
 576 mortality = F, natural mortality = M, present = P, unknown = U) for ultrasonically-tagged red
 577 snapper at various array sites.

Fish	Release	Site	Wt (kg)	TL (mm)	Event time (d)	Event
1	13-Dec-2005	A1	4.3	660	614	E
2	13-Dec-2005	A1	7.3	800	179	F
3	13-Dec-2005	A1	3.0	590	153	F
4	13-Dec-2005	A1	6.0	710	2	E
5	13-Dec-2005	A1	4.0	630	155	F
6	13-Dec-2005	A1	5.5	695	114	F
7	23-Dec-2005	A1	2.9	580	99	F
8	23-Dec-2005	A1	4.0	620	104	F
9	4-Jan-2006	A1	5.0	630	1	E
10	4-Jan-2006	A1	3.5	520	108	F
11	4-Jan-2006	A1	5.0	553	5	E
12	4-Jan-2006	A1	12.5	860	1	E
13	4-Jan-2006	A1	3.5	540	92	F
14	12-Jan-2006	A1	6.0	700	84	F
15	7-Jun-2006	A1	6.5	746	452	M

Fish	Release	Site	Wt (kg)	TL (mm)	Event time	
					(d)	Event
16	7-Jun-2006	A1	2.8	545	324	F
17	8-Jun-2006	A1	4.7	672	1	E
18	15-Jun-2006	A1	4.5	683	321	M
19	23-Jun-2006	A4	3.3	586	733	E
20	7-Jul-2006	A4	3.2	600	420	E
21	11-Jul-2006	A1	3.7	620	741	F
22	11-Jul-2006	A1	8.2	815	1020	P
23	27-Jul-2006	A2	5.5	691	0	M
24	28-Jul-2006	A2	9.5	823	411	E
25	28-Jul-2006	A2	5.1	680	227	E
26	28-Jul-2006	A2	5.8	730	322	E
27	9-Aug-2006	A3	7.1	760	3	E
28	9-Aug-2006	A3	4.3	660	406	U
29	11-Aug-2006	A3	3.0	605	215	E
30	14-Aug-2006	A3	2.2	538	120	U
31	14-Aug-2006	A3	2.8	537	758	E
32	14-Aug-2006	A3	3.1	569	362	F
33	21-Aug-2006	A3	6.5	740	124	U
34	21-Aug-2006	A3	2.5	543	1	E

Fish	Release	Site	Wt (kg)	TL (mm)	Event time	
					(d)	Event
35	7-Feb-2007	A2	3.3	555	530	M
36	7-Feb-2007	A2	5.8	690	572	U
37	7-Feb-2007	A3	2.6	549	4	E
38	7-Feb-2007	A3	3.8	610	28	E
39	7-Feb-2007	A3	4.5	640	534	M
40	7-Feb-2007	A3	3.5	580	1	E
41	7-Feb-2007	A3	4.0	613	57	M
42	6-Mar-2007	A1	5.0	665	6	E
43	6-Mar-2007	A1	4.8	660	46	F
44	3-Apr-2007	A2	5.5	690	144	E
45	3-Apr-2007	A2	5.3	680	1	E
46	12-Apr-2007	A3	2.8	565	479	M
47	12-Apr-2007	A3	2.8	555	122	F
48	12-Apr-2007	A3	4.5	670	776	P
49	21-May-2007	A2	2.5	550	210	M
50	21-May-2007	A2	11.0	800	750	P
51	12-Jun-2007	A3	2.5	590	711	P
52	27-Jun-2007	A1	6.5	645	542	E
53	3-Jul-2007	A2	5.0	705	30	M

Fish	Release	Site	Wt (kg)	TL (mm)	Event time	
					(d)	Event
54	9-Jul-2007	A2	5.5	710	588	E
55	9-Jul-2007	A2	5.0	710	20	F
56	9-Jul-2007	A3	3.3	620	688	P
57	9-Jul-2007	A3	5.8	730	182	E
58	25-Jul-2007	A3	4.5	685	462	U
59	25-Jul-2007	A3	3.8	660	661	E
60	25-Jul-2007	A3	6.1	760	167	E
61	29-Aug-2007	A4	3.8	645	339	F
62	29-Aug-2007	A4	2.5	550	650	P
63	29-Aug-2007	A4	3.3	601	332	F
64	29-Aug-2007	A4	5.0	710	379	E
65	5-Sep-2007	A4	3.5	635	332	F
66	13-Nov-2007	A1	5.0	705	575	P
67	14-Nov-2007	A4	3.0	579	572	P
68	20-Nov-2007	A3	3.0	605	286	M
69	29-Nov-2007	A3	4.3	658	239	E
70	29-Nov-2007	A3	9.8	810	381	E
71	11-Dec-2007	N1	3.0	573	265	U
72	11-Dec-2007	N1	2.2	501	80	E

Fish	Release	Site	Wt (kg)	TL (mm)	Event time	
					(d)	Event
73	11-Dec-2007	N1	2.5	550	6	E
74	11-Dec-2007	N1	1.9	517	547	P
75	18-Dec-2007	N1	2.6	557	1	U
76	18-Dec-2007	N1	2.2	524	4	E
77	8-Feb-2008	A1	3.6	640	47	M
78	8-Feb-2008	A1	3.3	615	121	F
79	10-Jun-2008	A2	3.8	640	336	P
80	10-Jun-2008	A2	7.8	790	364	P
81	10-Jun-2008	A2	6.0	745	83	E
82	16-Jun-2008	N1	2.3	537	161	E
83	16-Jun-2008	N1	2.8	575	359	P
84	2-Jul-2008	N1	3.6	632	1	M
85	2-Jul-2008	N1	2.0	525	3	E
86	10-Jul-2008	N1	2.2	524	335	P
87	10-Jul-2008	N1	2.0	526	335	P

Table 2. Instantaneous mortality rates (Z = total mortality, F = fishing mortality, M = natural mortality) of red snapper estimated from telemetry by the Kaplan-Meier, Staggered entry, and Ricker methods. The values in parentheses are 95% confidence limits (CLs).

Exploitation = u , expectation of natural death = v .

Method	Parameters	Z	F	M
Kaplan-Meier	$n = 70$ fish released on day 0	0.50 (0.33–0.76)	0.38 (0.24–0.62)	0.12 (0.05–0.27)
Staggered entry	$n = 70$ fish staggered release	0.43 (0.32–0.60)	0.31 (0.20–0.46)	0.12 (0.04–0.22)
Ricker model (1)	mean $u = 0.25$ /year (this study) $Z = 0.54$ (Szedlmayer 2007)	0.54	0.32	0.22
Ricker model (2)	mean $v = 0.11$ /year (this study) $Z = 0.54$ (Szedlmayer 2007)	0.54	0.40	0.14
Ricker model (3)	mean $u = 0.25$ /year (this study) mean $v = 0.11$ /year (this study)	0.44	0.30	0.14

Table 3. Instantaneous mortality rates (Z = total mortality, F = fishing mortality, M = natural mortality) of red snapper for each full year of the study estimated from telemetry by the Staggered entry and Ricker methods.

Method	Year	M	F	Z
Staggered entry	2006	0.00	0.62	0.62
	2007	0.23	0.24	0.47
	2008	0.17	0.17	0.34
Ricker (model-3)	2006	0.00	0.80	0.80
	2007	0.28	0.25	0.53
	2008	0.20	0.14	0.34

Table 4. Methods used to estimate natural mortality (M) from life history parameters for red snapper in the northern Gulf of Mexico. The following parameters were used: $K = 0.17$, $t_0 = -0.79$, $L_\infty = 92.3$ cm (Szedlmayer 2007); $t_{\max} = 52$, $W_{\max} = 22790$ g, $\text{inAge} = 1$, $\text{finAge} = 52$ (Wilson and Nieland 2001); $T = 21.5$ °C (mean temperature at 30 m from 1Aug2006–1Aug2008, continuous loggers deployed during this study). The maximum age (t_{\max}) = 52 years; estimates of M in parentheses use $t_{\max} = 42$ (Szedlmayer and Shipp 1994). The proportion of fish surviving to maximum age is 1% ($Ps = 0.01$).

Method	Equation	M
Jensen (1996)	$M = 1.5(K)$	0.26
Hoening (1983)	$\log_e(M) = 1.46 - 1.01 \log_e(t_{\max})$	(0.10) 0.08
Quinn and Deriso (1999)	$M = -\log_e(Ps) / t_{\max}$	(0.11) 0.09
Peterson and Wroblewski (1984)	$M = 1.92(W_{\max}^{-0.25})$	0.16
Pauly (1980)	$\log(M) = -0.0066 - 0.279 \log(L_\infty)$ $+ 0.6543 \log(K) + 0.4634 \log(T)$	0.36
Chen and Watanabe (1989)	$M = 1 / (\text{inAge} - \text{finAge})$ $\cdot \log_e\{[e^{(K \cdot \text{finAge})} - e^{(K \cdot t_0)}] / [e^{(K \cdot \text{inAge})} - e^{(K \cdot t_0)}]\}$	0.20

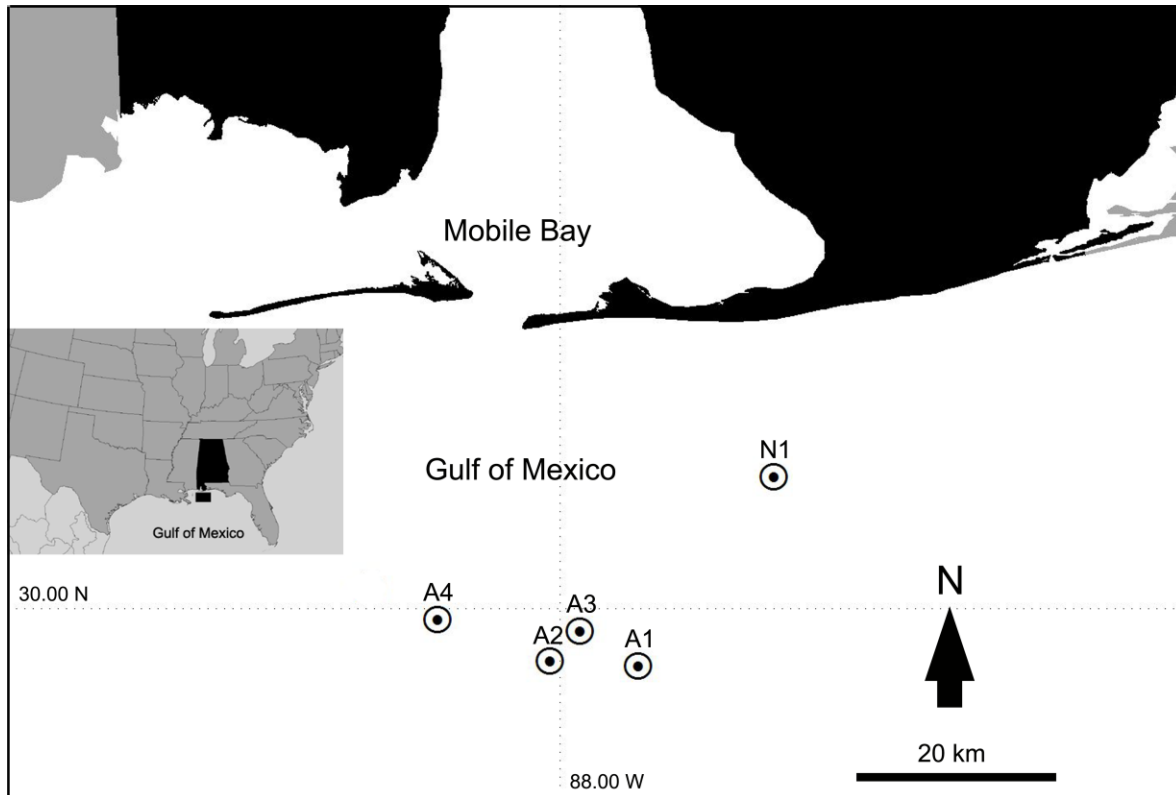


Figure 1. Location of study sites (A1–A4, N1) in the northeast Gulf of Mexico. Inset (middle left) shows Gulf of Mexico and study area (black box) offshore Alabama (black), USA.

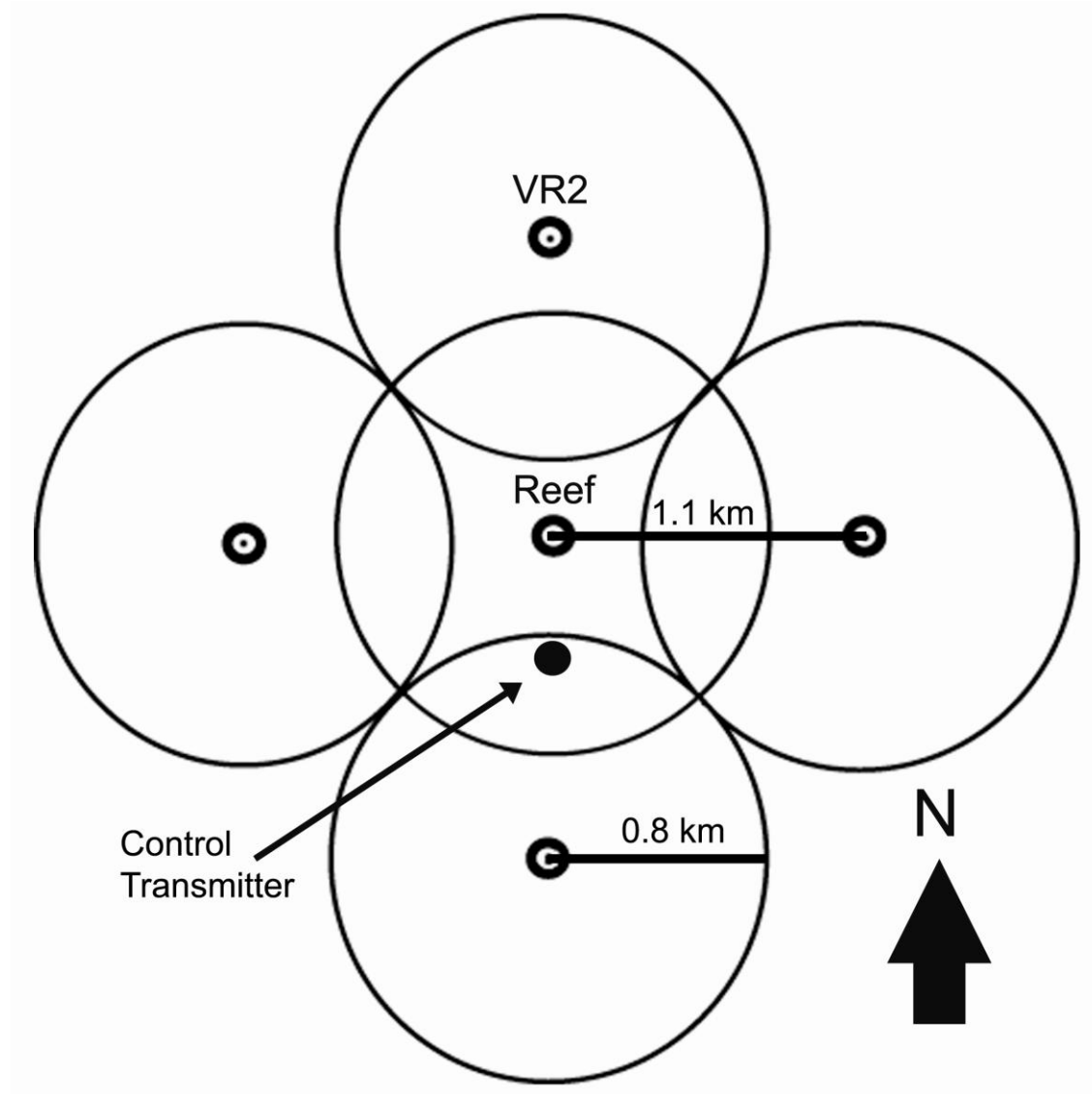


Figure 2. Receiver array design for each site, with one receiver at the reef and four others surrounding the reef 1.1 km (0.4 km at site A4) away to the N, S, E, and W. Circles represent detection range of 0.8 km. A stationary control transmitter was placed 400 m S of reef (150 m at A4).

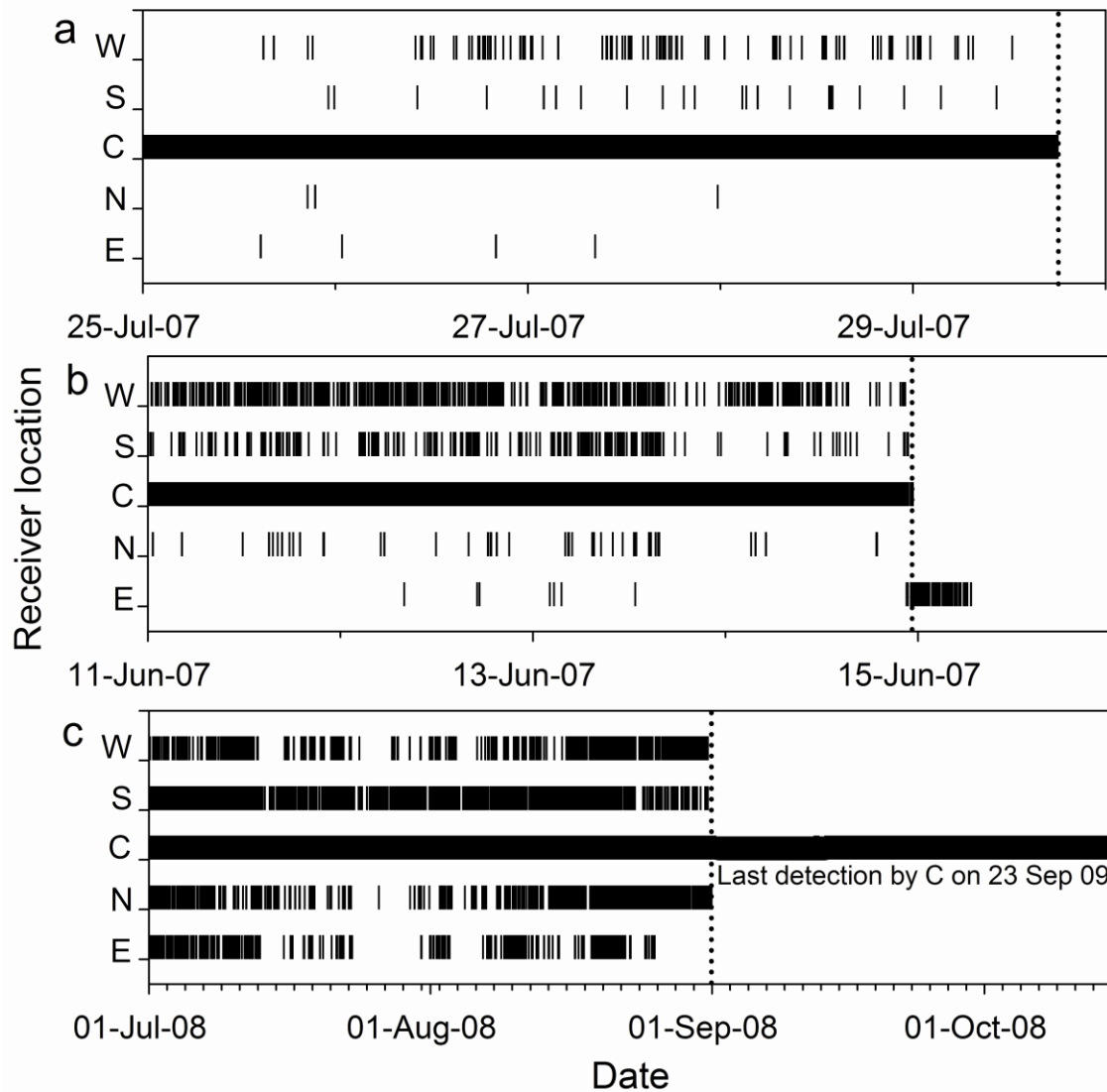


Figure 3. Plots showing examples of the detection patterns expected from fish experiencing either a) fishing mortality, b) emigration, or c) natural mortality events. Each plot shows a segment of the overall detections of a single fish by the Center (C), North (N), South (S), East (E), and West (W) receivers at its site of release. The vertical dashed lines indicate the occurrence of the specified event. Note: different scales for X-axis.

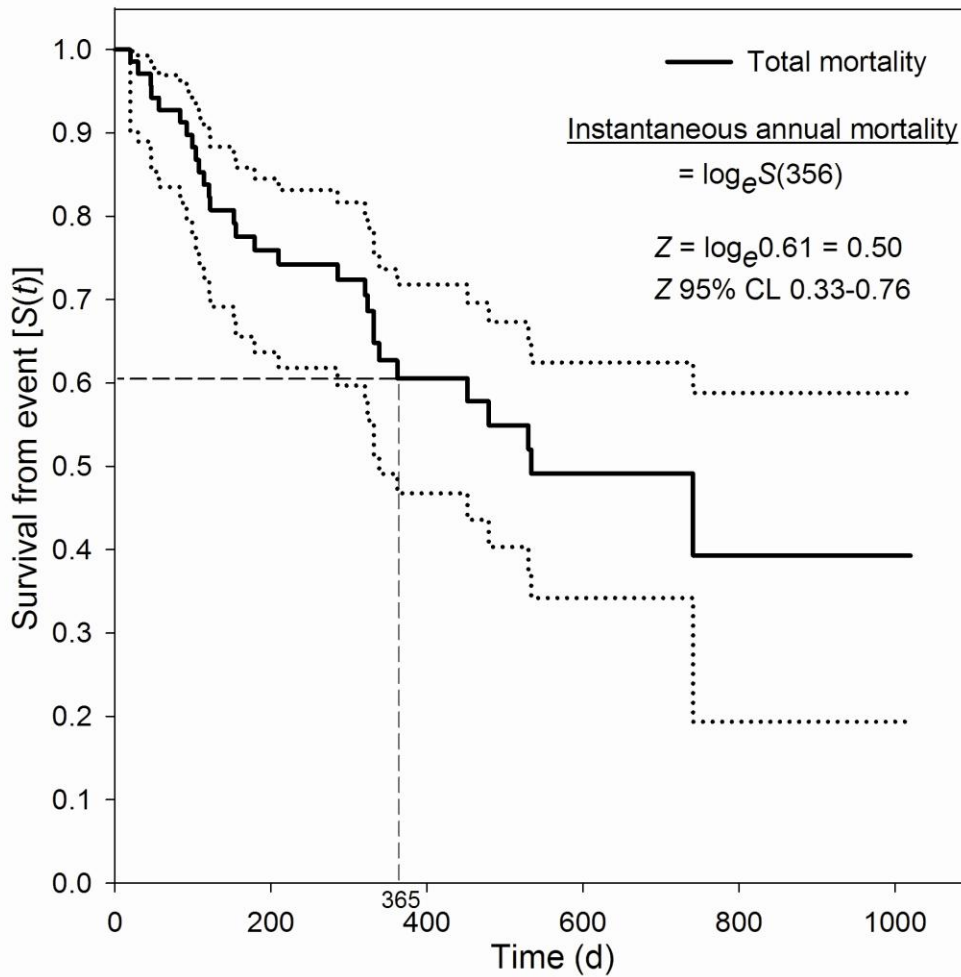


Figure 4. Kaplan-Meier (K-M) estimation of survival (S_Z) of red snapper from total mortality (fishing and natural mortality). Dashed lines show proportion of fish (61%) surviving total mortality at 365 d (t). Dotted lines are 95% confidence limits (CL). Instantaneous total mortality (Z) is calculated from proportion surviving at 365 d and Z 95% CL is calculated from survival at 365 d at 95% CL.

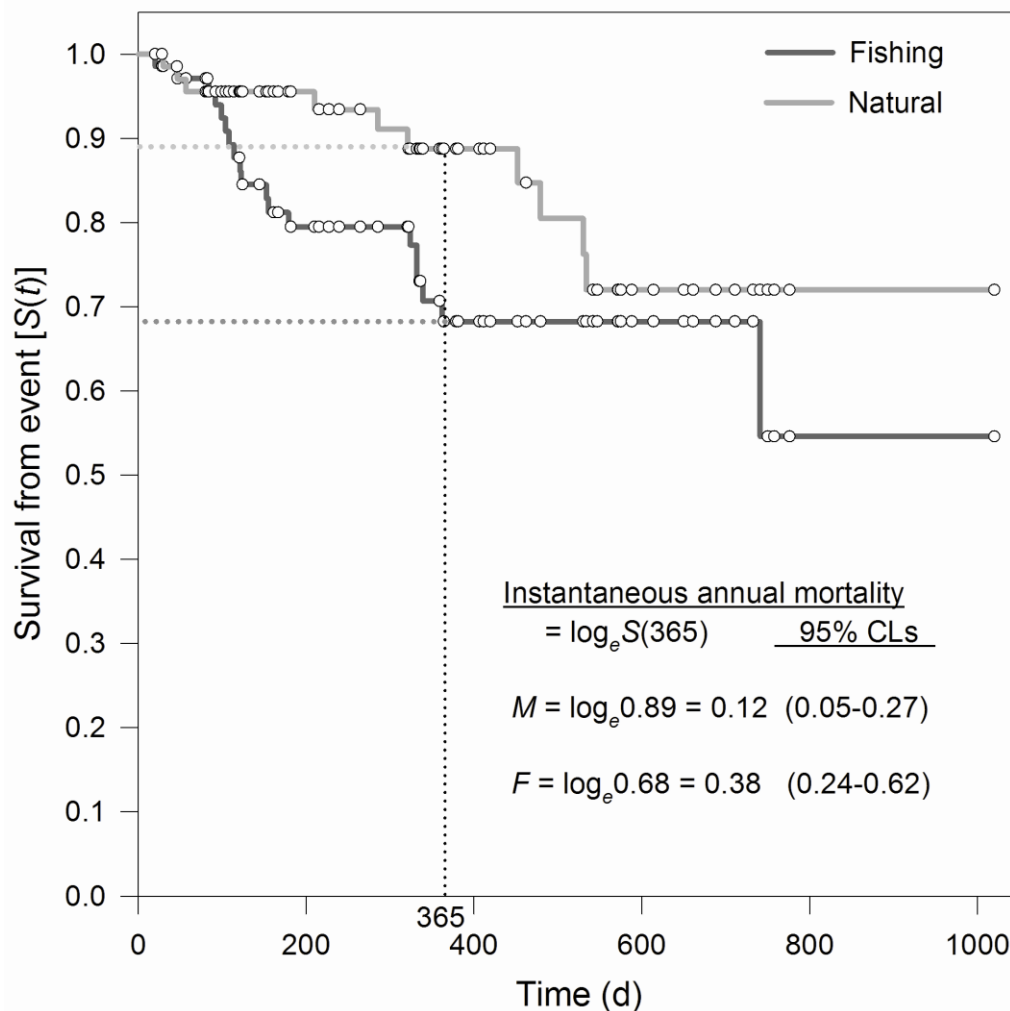


Figure 5. Kaplan-Meier (K-M) estimation of survival (S) of red snapper from fishing (dark gray) and natural mortality (gray). Dashed lines show proportion of fish surviving fishing and natural mortality at 365 d (t). Instantaneous fishing (F) and natural (M) mortality rates calculated from proportion surviving each mortality at 365 d and 95% CL is calculated from 95% confidence limits of $S(365)$ for each survival probability (not shown).

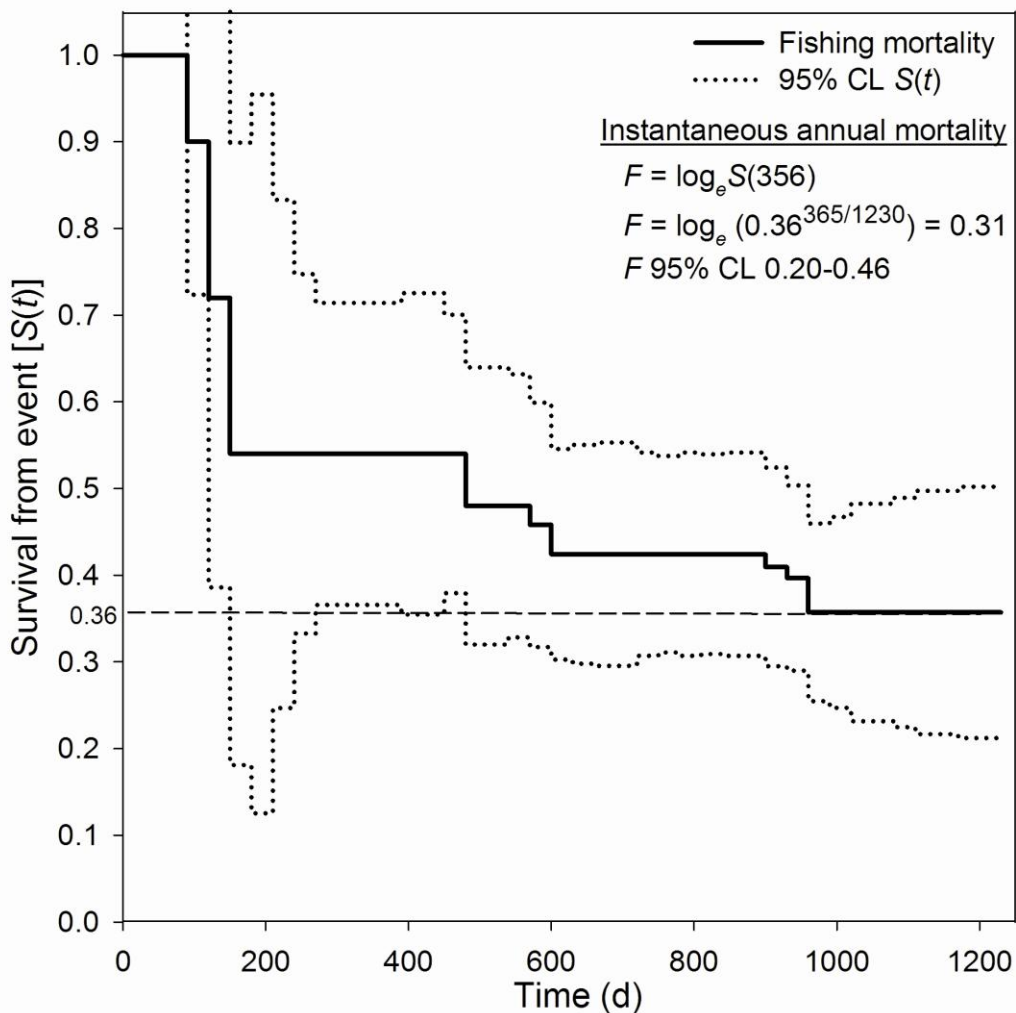


Figure 6. Staggered entry estimation of survival (S) of red snapper from fishing mortality.

Dashed line shows proportion (36%) of fish surviving fishing at 1230 d (t). Instantaneous fishing (F) mortality rates calculated from proportion surviving at 1230 d, adjusted to $S_F(365) = 74\%$.

Dotted lines are 95% confidence limits (CL). Day 0 is 13 December 2005.

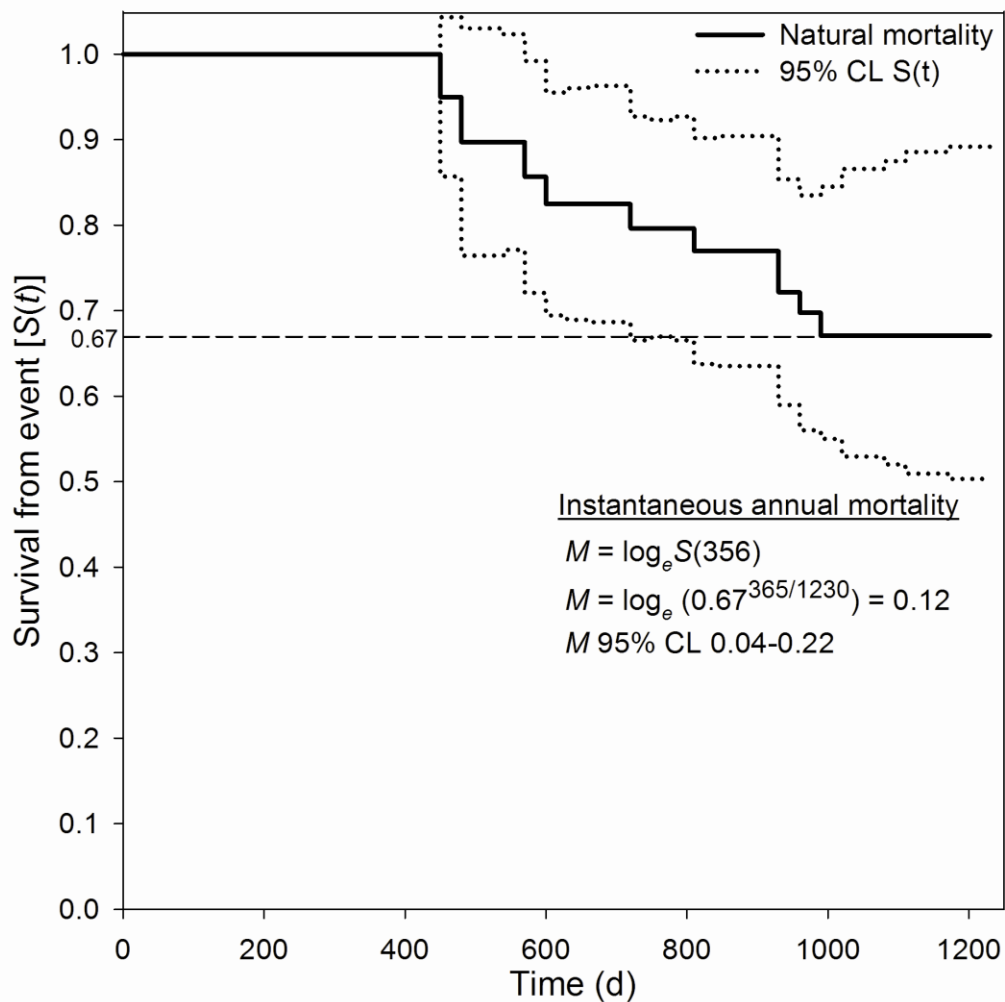


Figure 7. Staggered entry estimation of survival (S) of red snapper from natural mortality.

Dashed line shows proportion (67%) of fish surviving natural mortality at 1230 d (t).

Instantaneous natural (M) mortality rates calculated from proportion surviving at 1230 d, adjusted to $S_M(365) = 89\%$. Dotted lines are 95% confidence limits (CL). Day 0 is 13 December 2005.

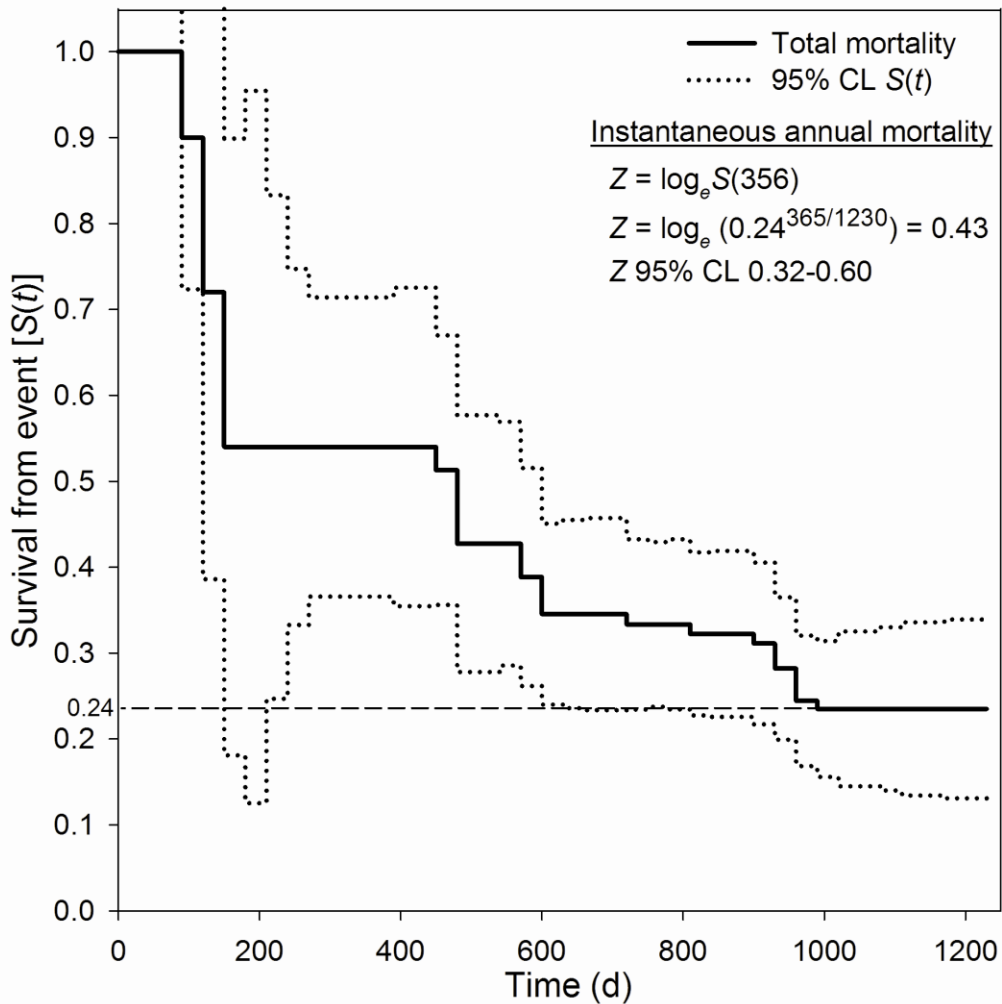


Figure 8. Staggered entry estimation of survival (S) of red snapper from total mortality (fishing and natural). Dashed line shows proportion (24%) of fish surviving total mortality at 1230 d (t). Instantaneous total (Z) mortality rates calculated from proportion surviving at 1230 d, adjusted to $S_Z(365) = 65\%$. Dotted lines are 95% confidence limits (CL). Day 0 is 13 December 2005.