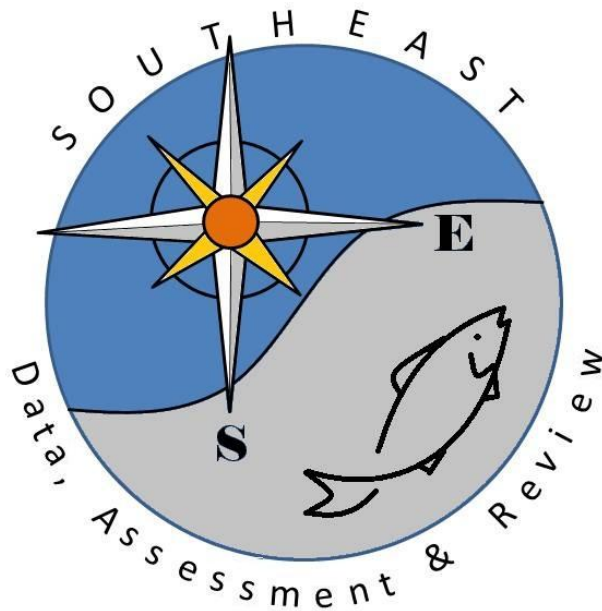


Combined Index for Florida Fish and Wildlife Research Institute and
NMFS Panama City Video Surveys

Walter Ingram

SEDAR31-AW14

28 January 2013



This information is distributed solely for the purpose of peer review. It does not represent and should not be construed to represent any agency determination or policy.

Please cite as:

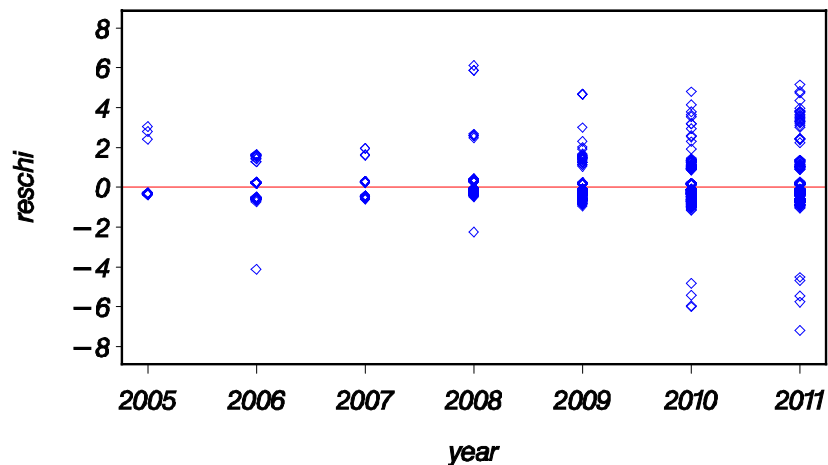
Ingram, G.W. 2013. Combined Index for Florida Fish and Wildlife Research Institute and NMFS Panama City Video Surveys. SEDAR31-AW14. SEDAR, North Charleston, SC. 4 pp.

SEDAR31-AW14

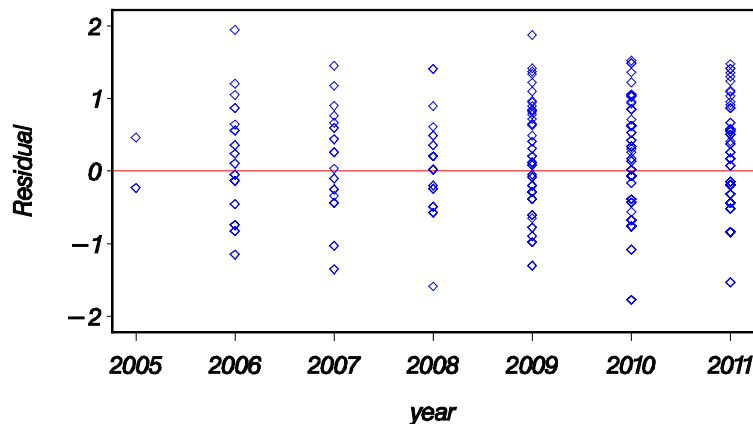
Combined Index for FWRI and PC Video Surveys
Walter Ingram

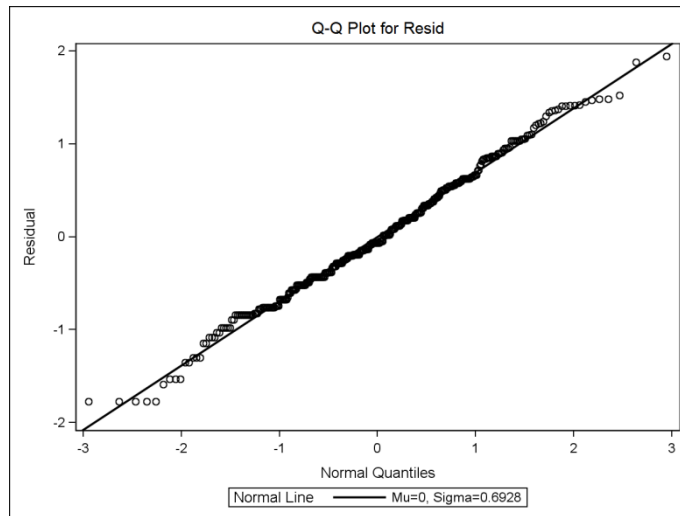
The following is the abundance index based on the combination of data from the NMFS Panama City Video Survey Data (SEDAR31-DW-28) and the FWRI Video Survey Data (SEDAR31-DW-24). The variables of year, depth, and area were used to develop the models. There were four area categories with the PC Video Data being divided into areas west and east of Cape San Blas and the FWRI Video Data being divided into areas north and south of latitude 27 degrees north. The following graphs show the residuals of the sub-models developed for the delta-lognormal approach.

Delta lognormal CPUE for PC and FWRI Video red snapper
Chisq Residuals proportion positive

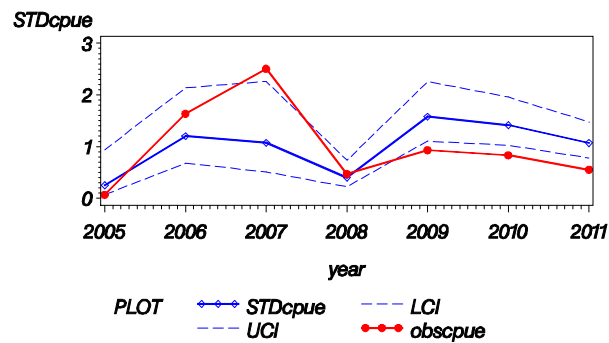


Delta lognormal CPUE for PC and FWRI Video red snapper
*Residuals positive cpue * Year*





*Delta lognormal CPUE for PC and FWRI Video red snapper
Observed and Standardized CPUE (95% CI)*



Survey Year	Frequency	N	Index	Scaled Index	CV	LCL	UCL
2005	0.09677	31	0.27414	0.25475	0.72824	0.06911	0.93905
2006	0.49296	71	1.29377	1.20226	0.29307	0.67712	2.13468
2007	0.51923	52	1.15482	1.07314	0.38629	0.50900	2.26250
2008	0.16822	214	0.43342	0.40276	0.30672	0.22111	0.73366
2009	0.25407	307	1.69971	1.57949	0.17983	1.10550	2.25671
2010	0.32198	323	1.52428	1.41647	0.16293	1.02474	1.95795
2011	0.26873	387	1.15266	1.07113	0.16119	0.77756	1.47554