



Red Drum Fisheries Dependent Data Sources

August 13, 2024



Fishery-Dependent Data Sources

- Commercial Data
 - ACCSP Data Warehouse (since 1950)
 - Verified through each state
- Recreational Data (Primary)
 - MRIP
 - Exclusive source in southern stock since late 1980s
- Tagging Programs
 - Varies by state

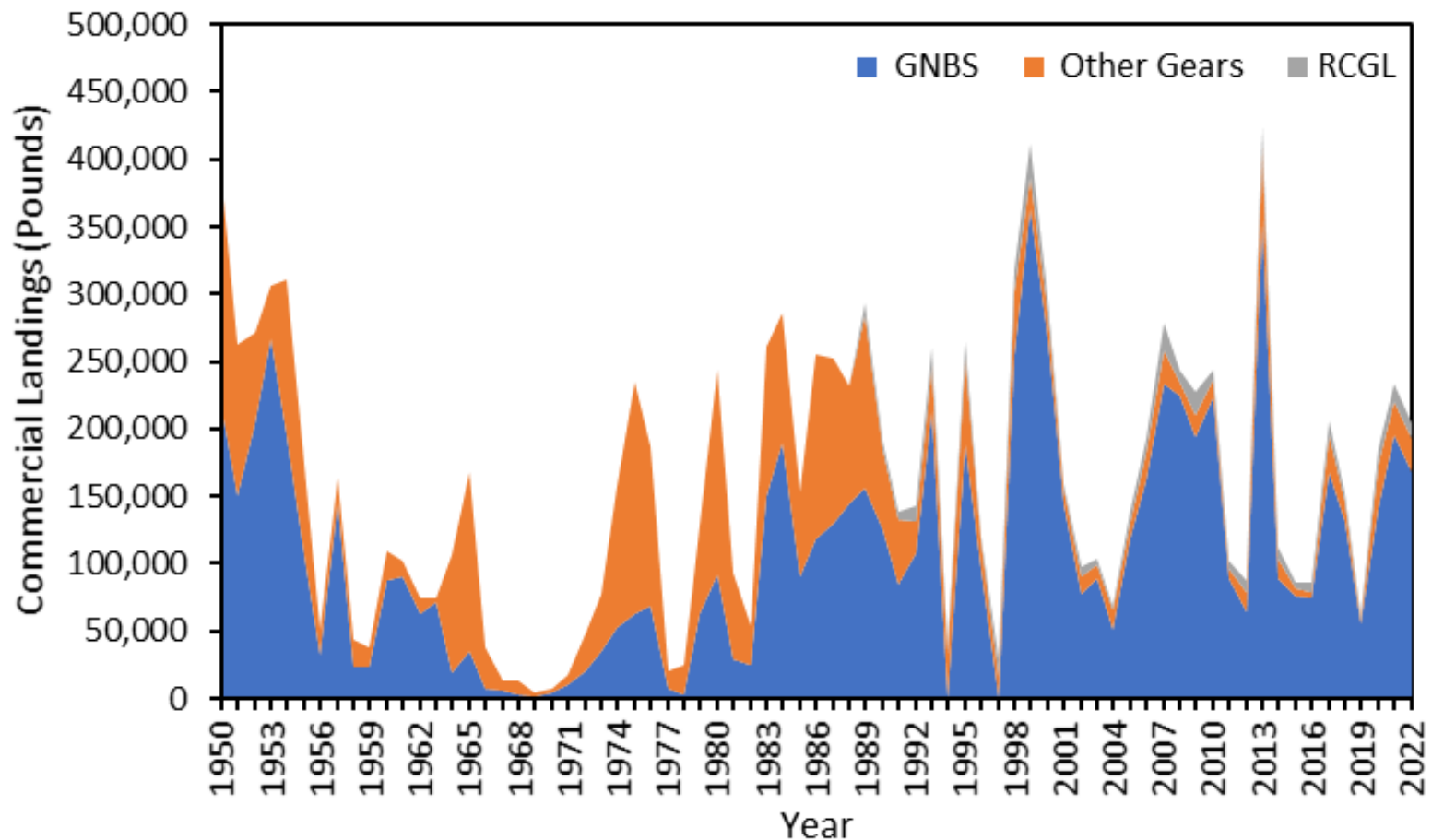


Commercial Landings

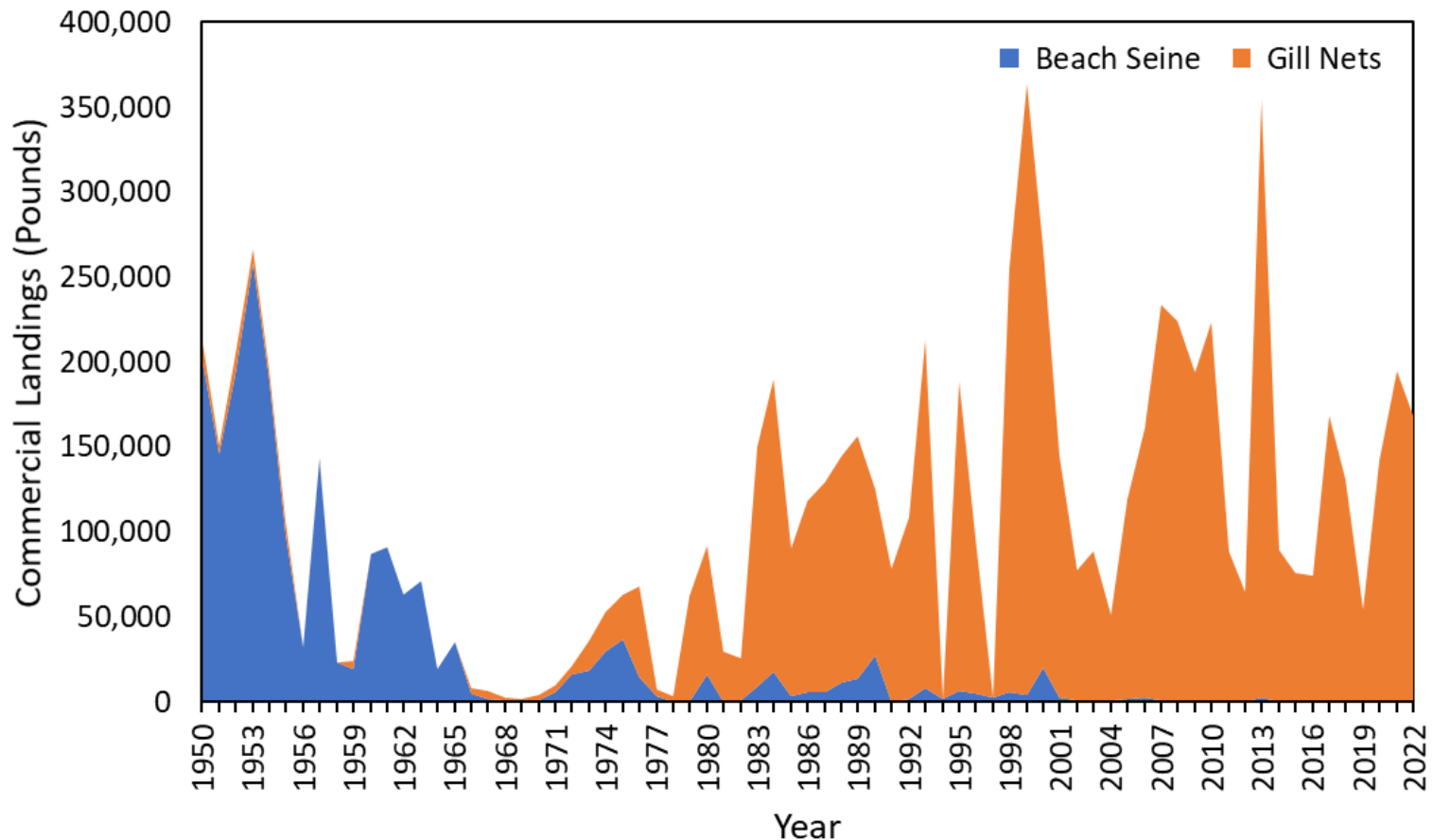
Commercial landings data collection methodology

	1950-1977	1978-1985	1986-1988	1989	1990-1993	1994	1995-2000	2001-2003	2004	2005	2006	2007-today
ME DMR												
NH FGD												
MA DMF												
RI DFW												
CT DEEP												
NY DEC												
NJ DEP												
DE DFW												
MD DNR												
VMRC												
NC DMF												
SC DNR												
GA DNR												
FL FWC												
	Annual summaries		Monthly summaries		Mixed (trip reports and monthly summaries)		Trip reports (all fisheries)					

Northern Stock Commercial Landings

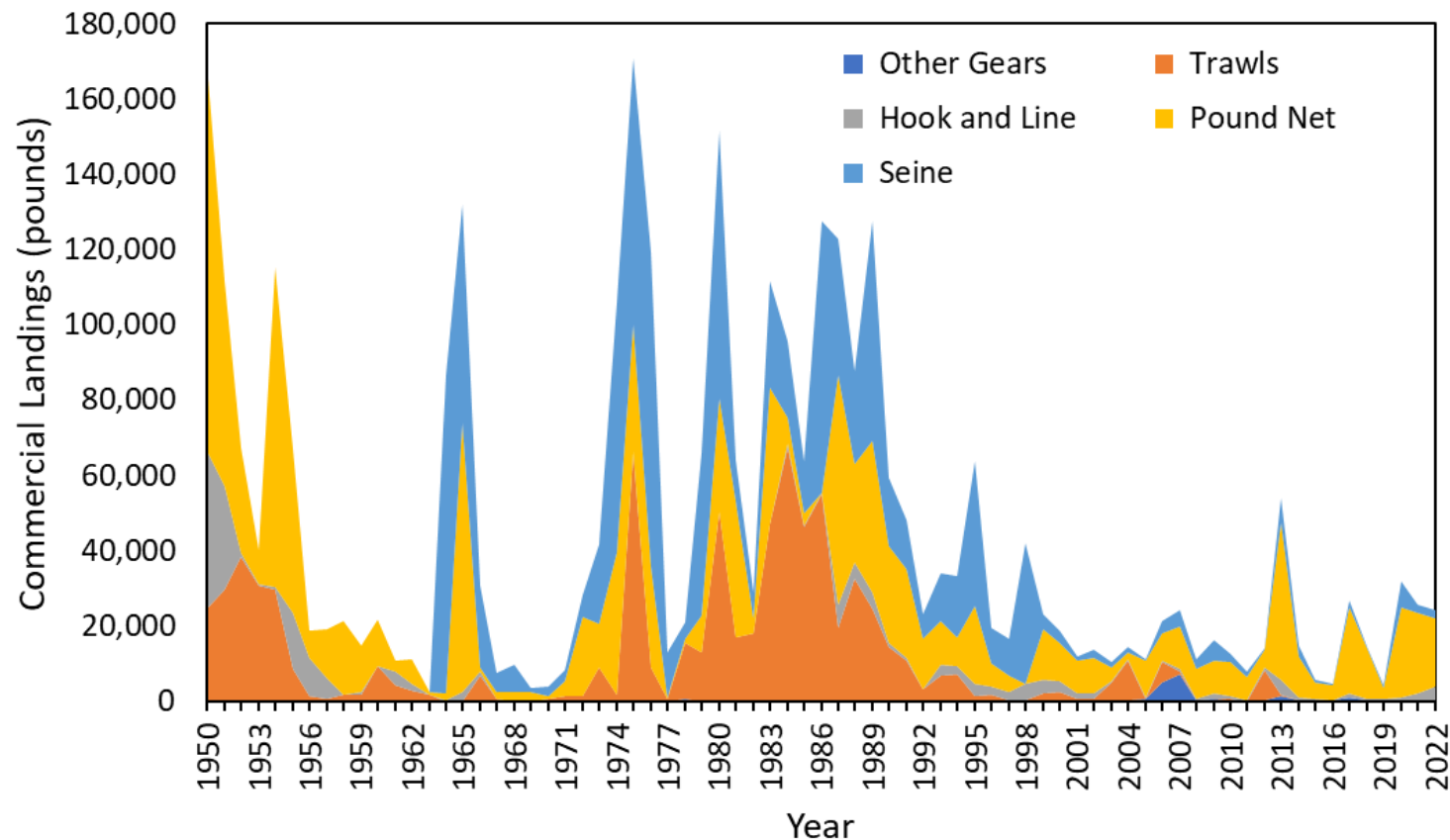


Northern Stock Commercial Landings Gill Nets and Beach Seines (GNBS)

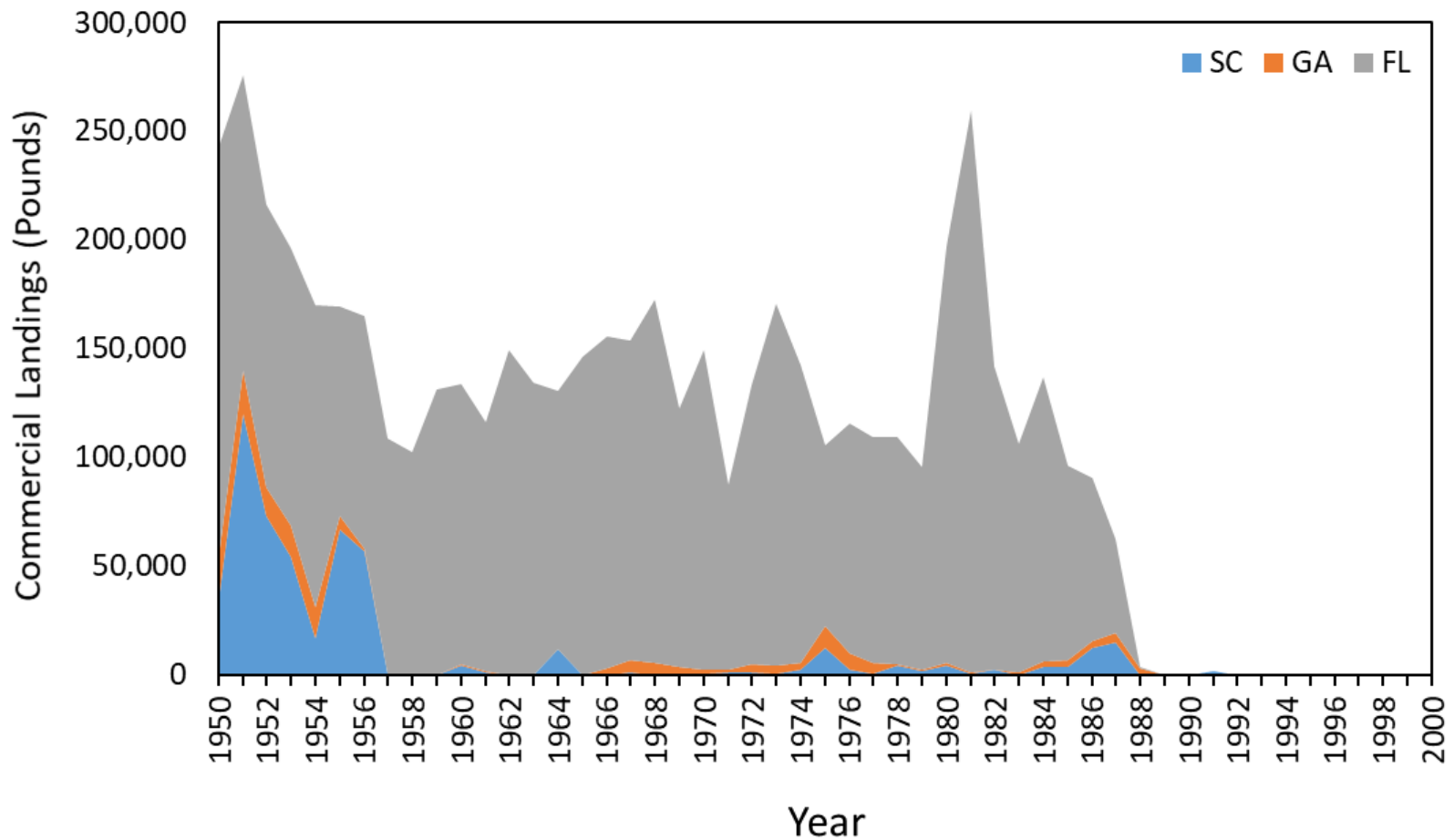


Northern Stock Commercial Landings

Other Gears



Southern Stock Commercial Landings

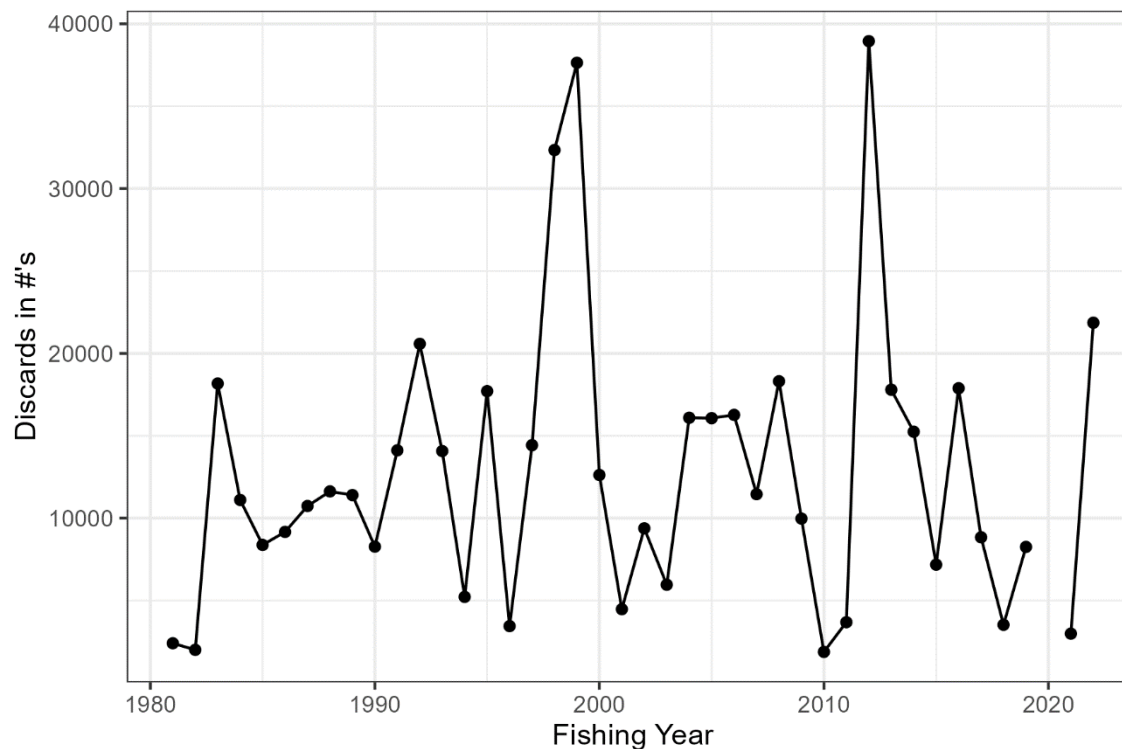




Commercial Discards

- Currently only 1 data source
 - NC estuarine fill net fishery
 - 2004-2022
 - >90% red drum commercial harvest is from gill nets
- CPUE = # (or weight) dead per trip
- Release mortality = 5% (SEDAR 18)
- Estimated with GLM
 - Variables: mesh size, year, season, and area
 - Live and dead modeled separately

Northern Stock Commercial Landings GNBS Discards

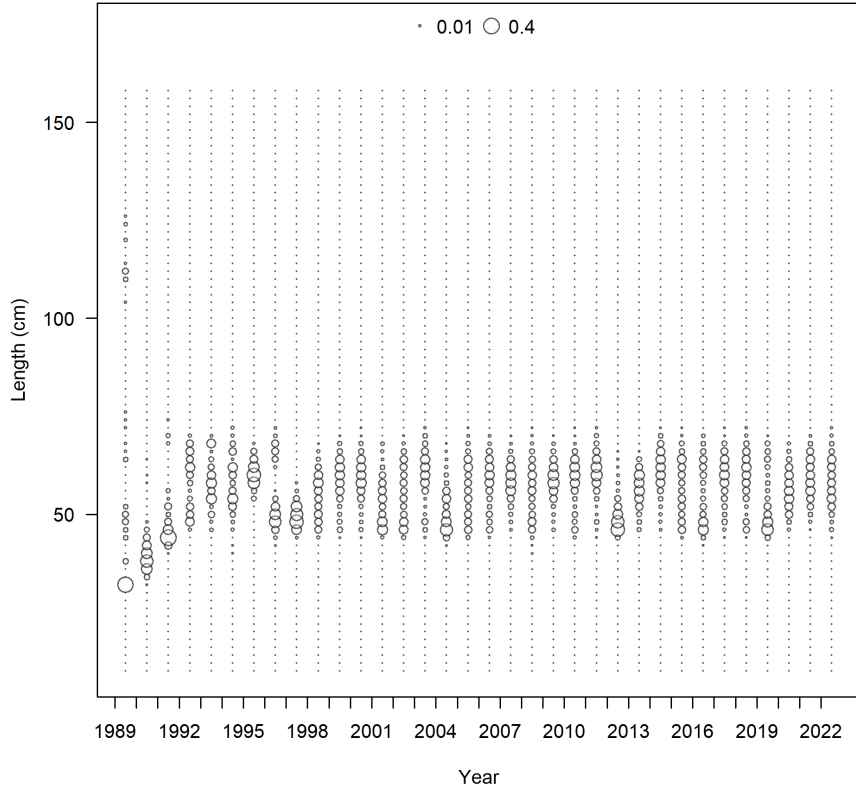


Commercial Biological Data

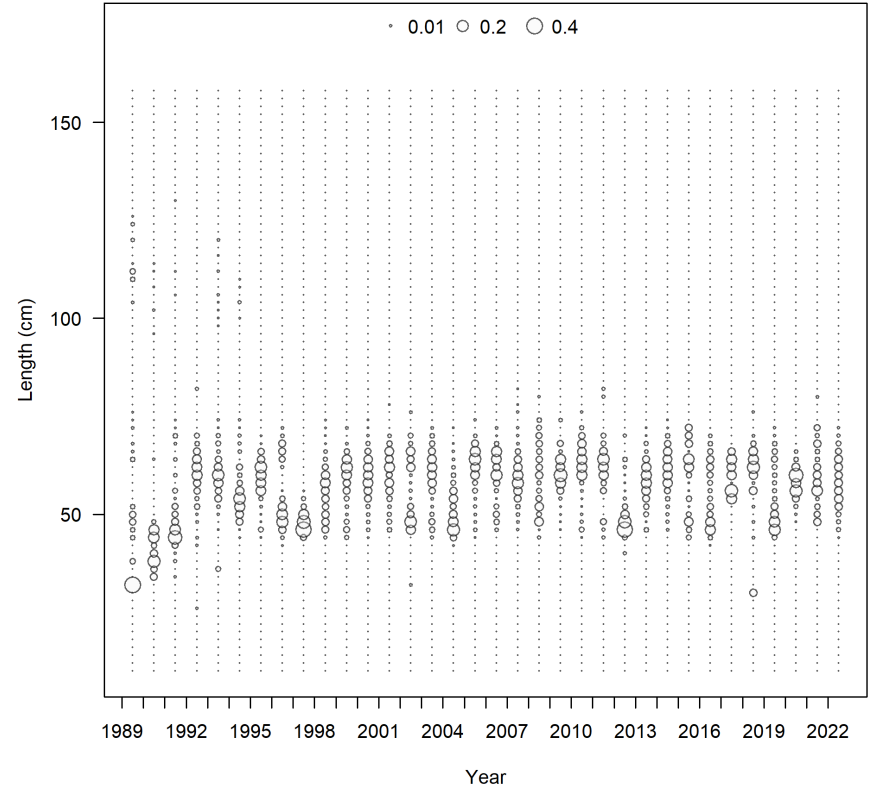
- Virginia
 - Individual total and fork length (mm)
 - Individual weight (0.01 lb)
 - Otoliths, sex, maturity
- North Carolina
 - Individual fork length (mm)
 - Aggregate total weight (0.1 kg)

Northern Annual Length Distribution

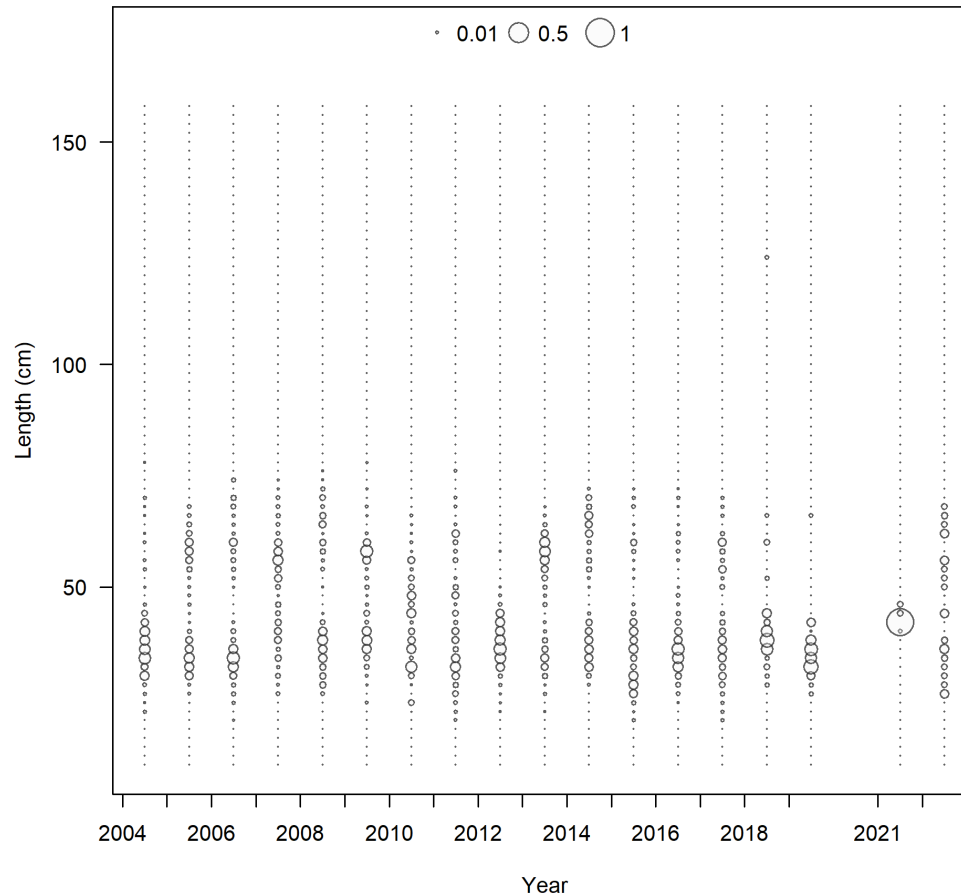
North Commercial GNBS Fleet



North Commercial Other Gears Fleet



Annual Length Distribution North Commercial GNBS Discards



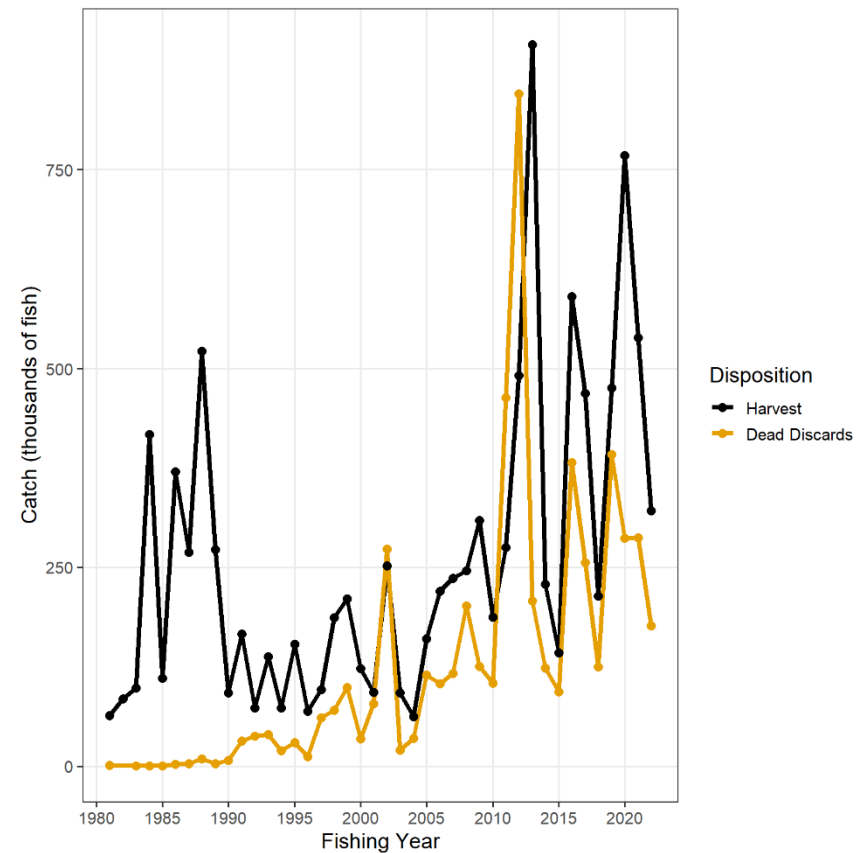
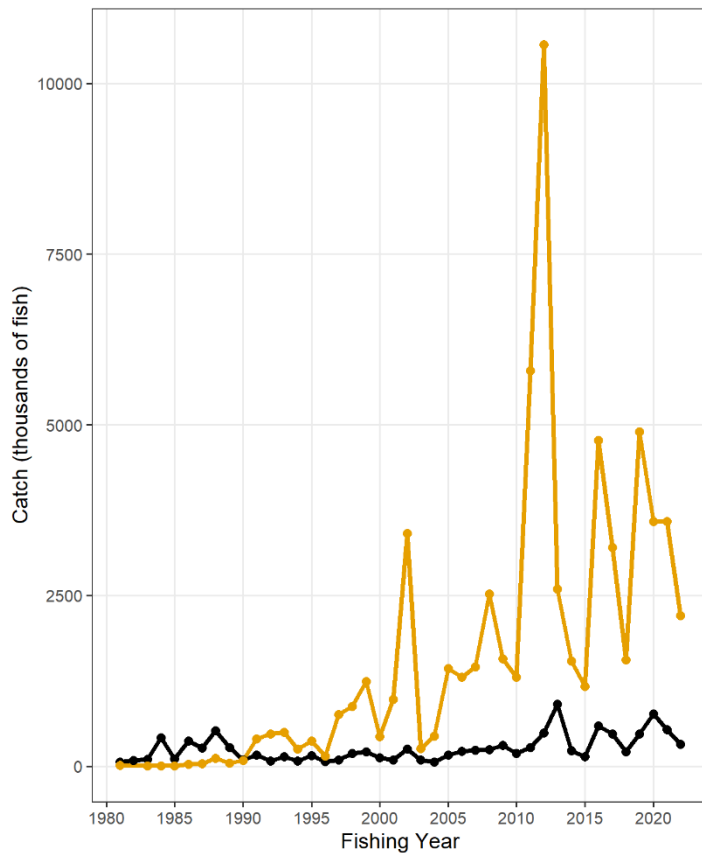


Recreational Data

Marine Recreational Information Program (MRIP)

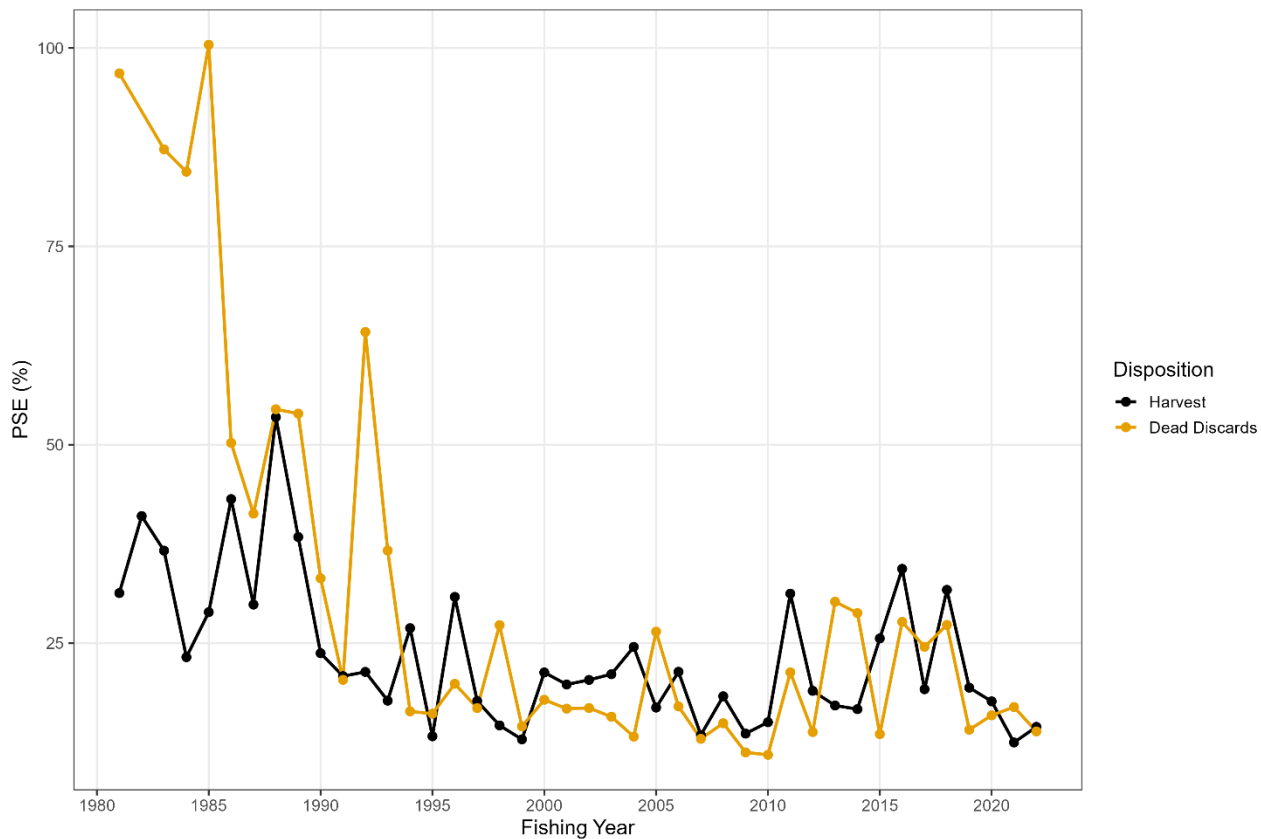
- Access Point Angler Intercept Survey (APAIS)
- Fishing Effort Survey (FES)
- For-Hire Survey (FHS)

Northern Stock Recreational Landings

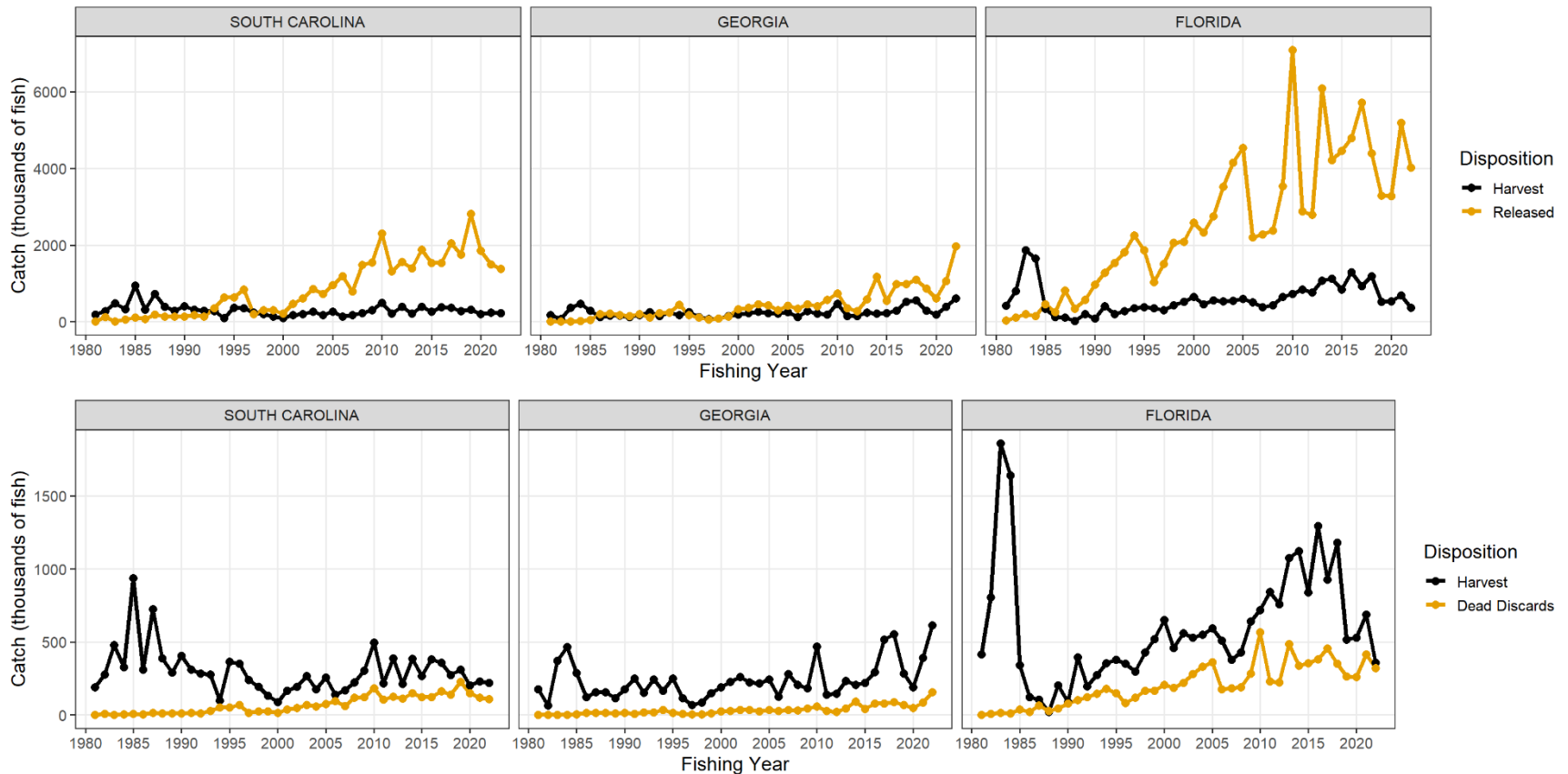


Northern Stock Recreational PSEs

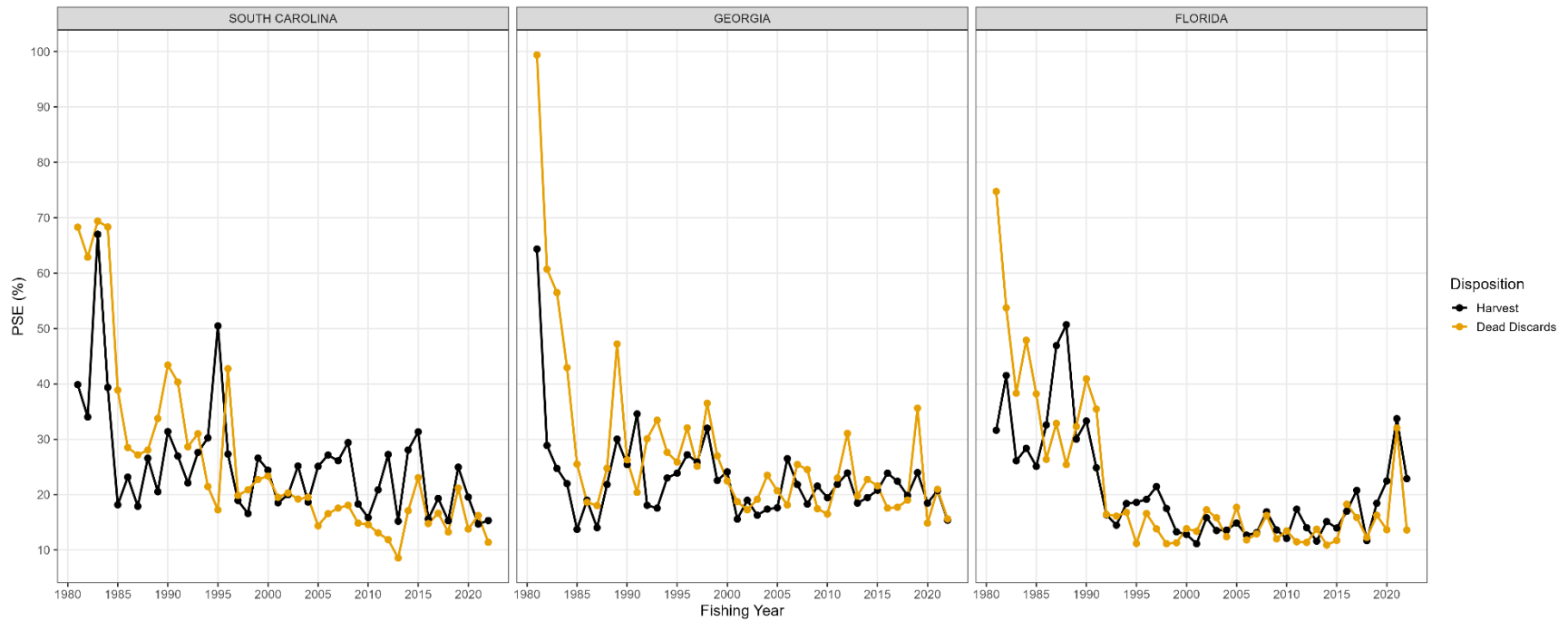
Proportional Standard Error (PSE)



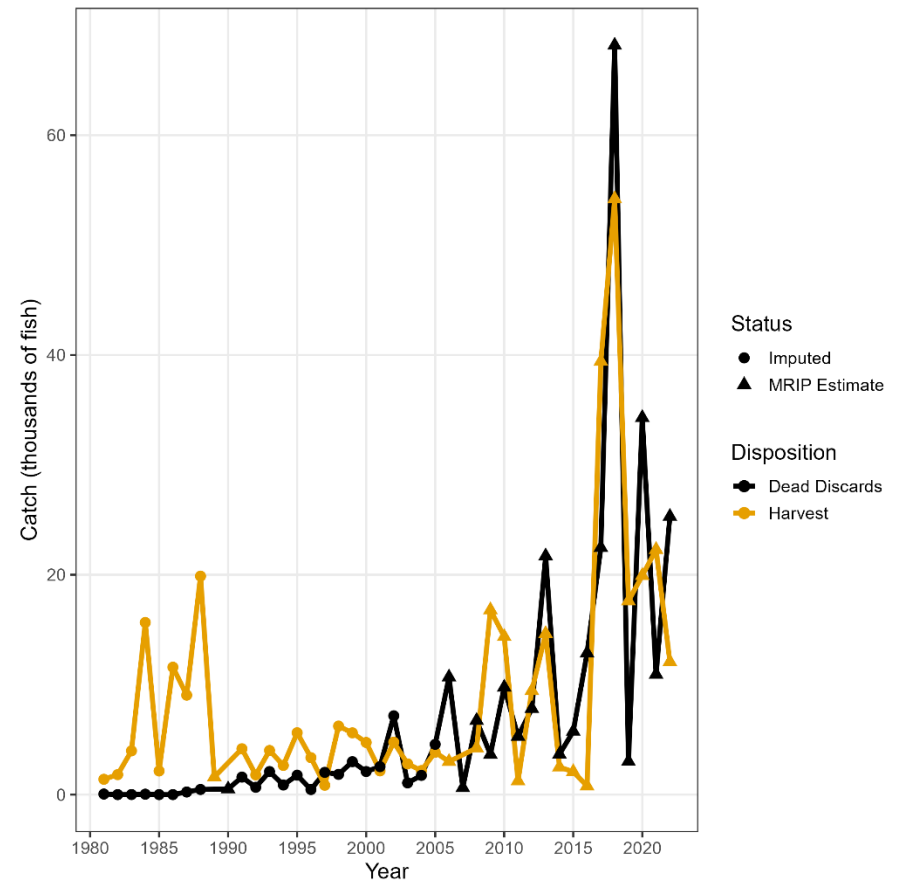
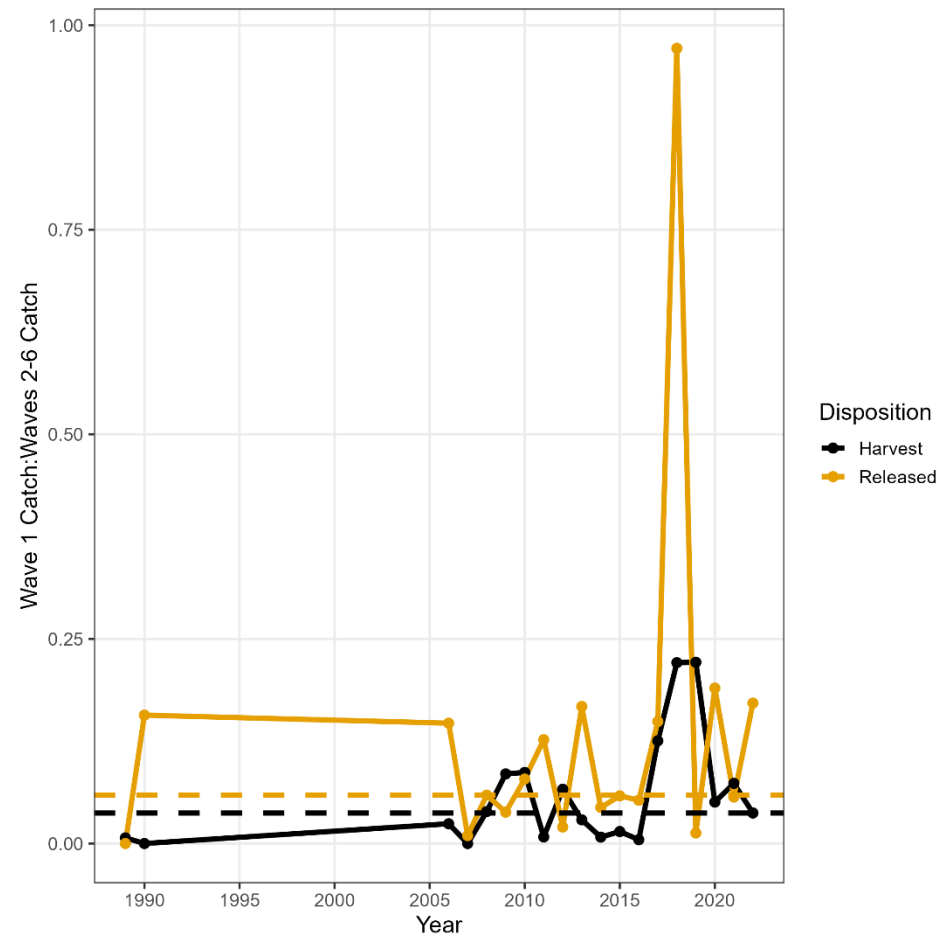
Southern Stock Recreational Landings



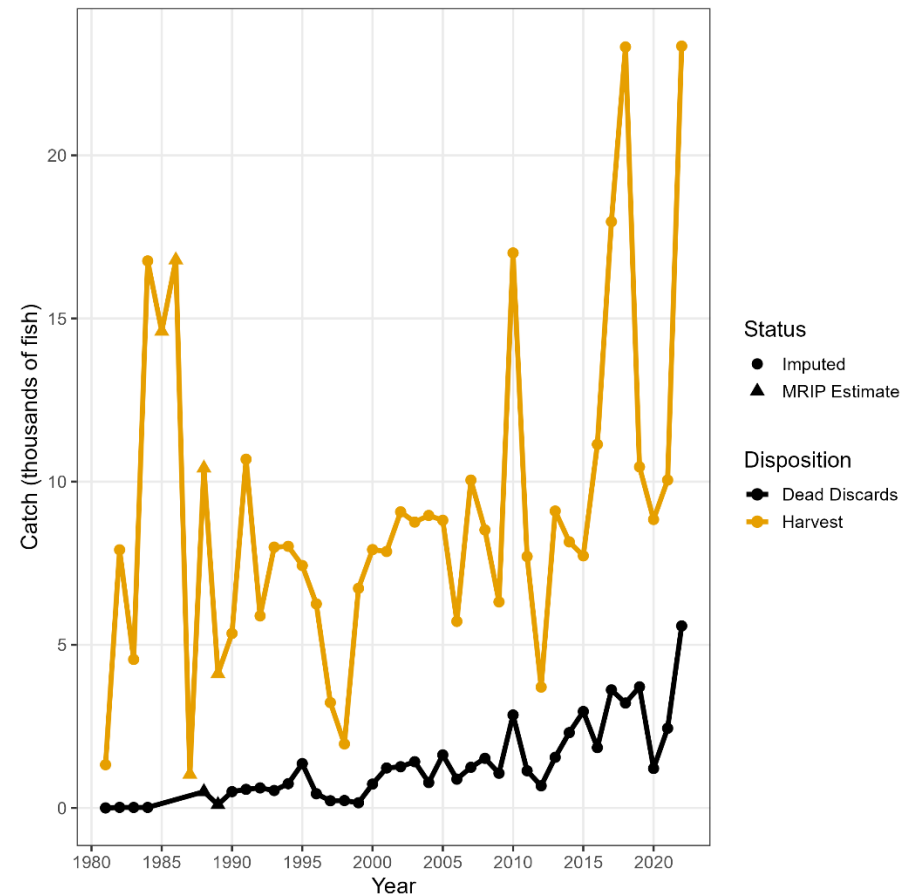
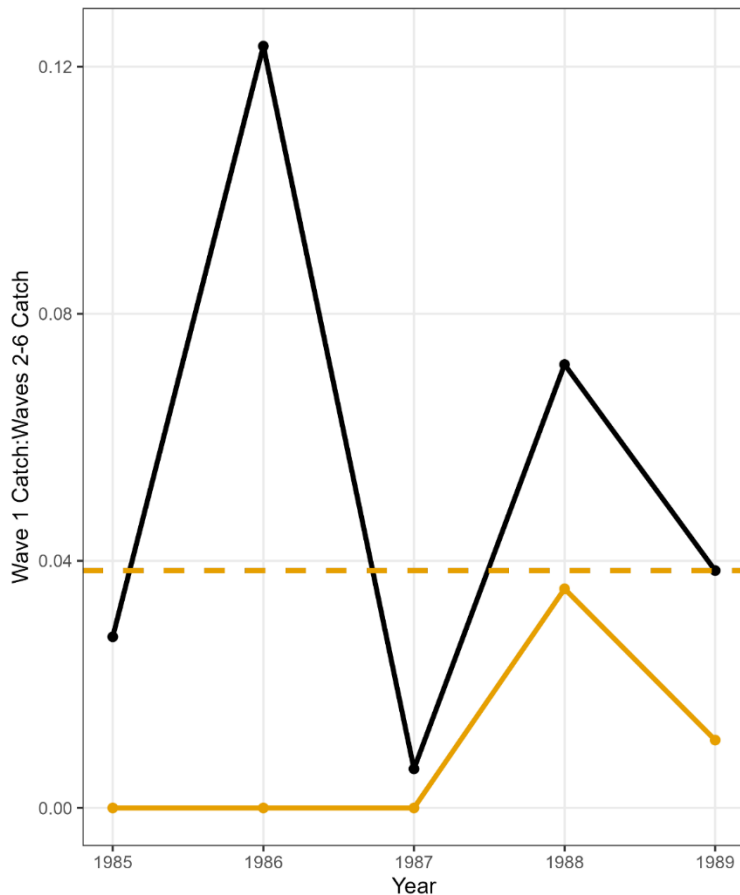
Southern Stock Recreational PSE



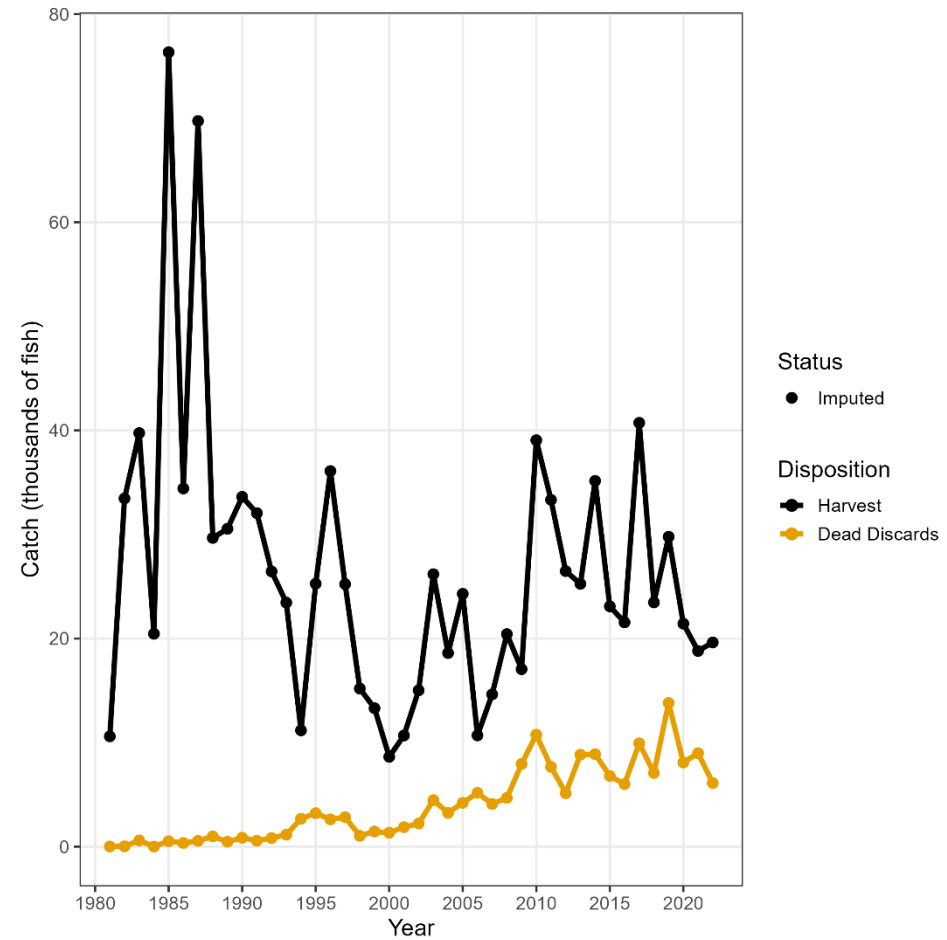
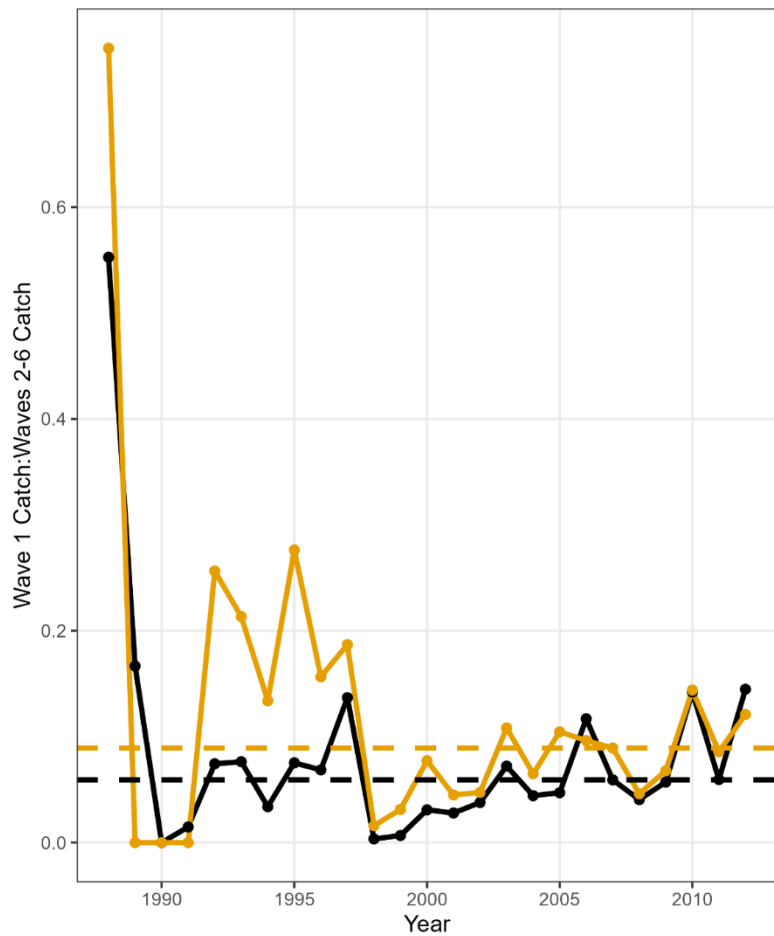
Imputed Wave 1 Catch Estimates (NC)



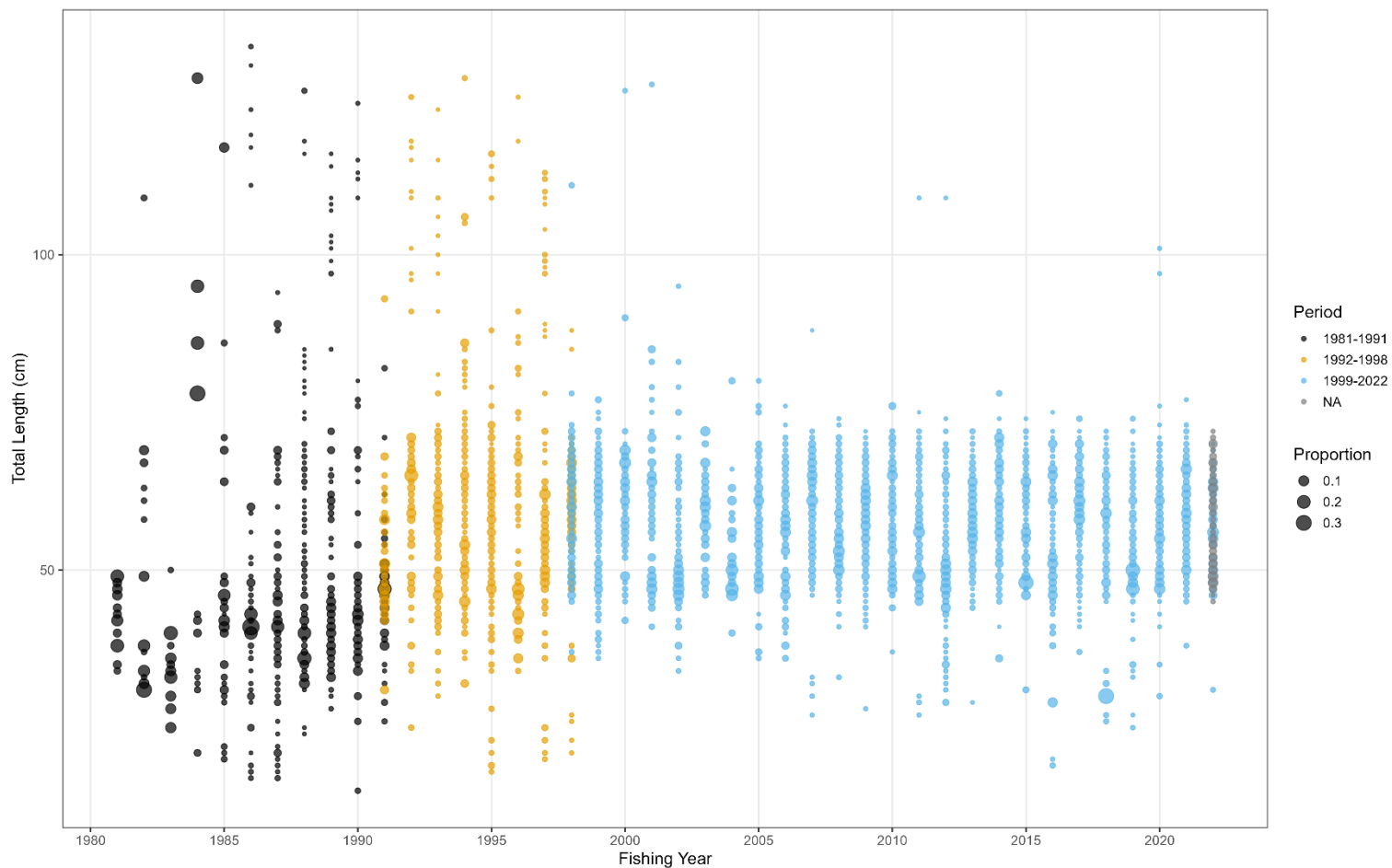
Imputed Wave 1 Catch Estimates (GA)



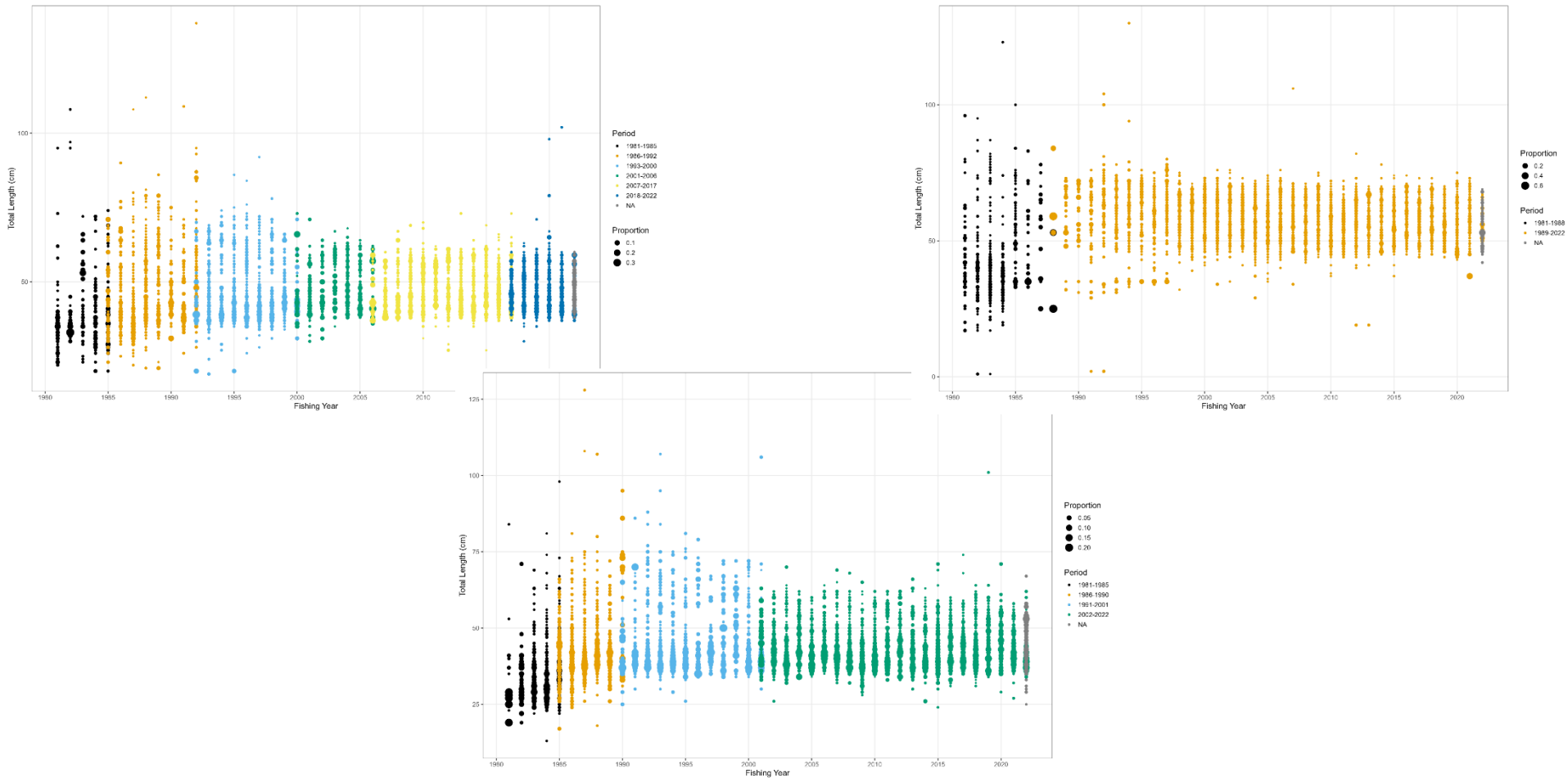
Imputed Wave 1 Catch Estimates (SC)



Northern Recreational Catch Composition



Southern Recreational Catch Composition





Supplemental Recreational Sampling

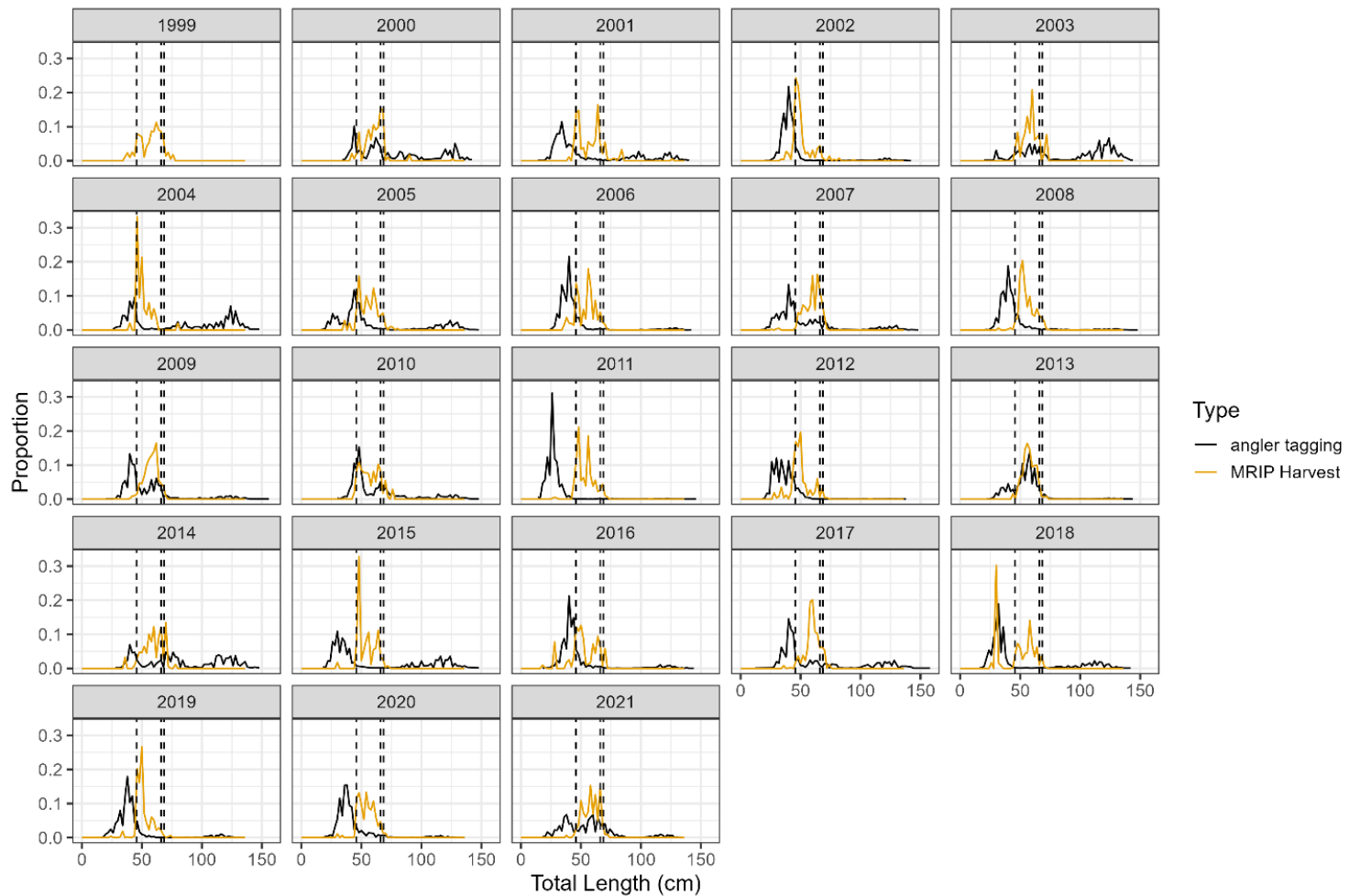
- VA
 - VMRC recreational carcass recovery program
- NC
 - DMF Carcass Collection Program
- SC
 - SCDNR Inshore Fisheries freezer fish program
 - SCDNR Inshore Fisheries tournament sampling
 - SCDNR State Finfish Survey
- GA
 - GADNR Marine Sportfish Carcass Recovery Project



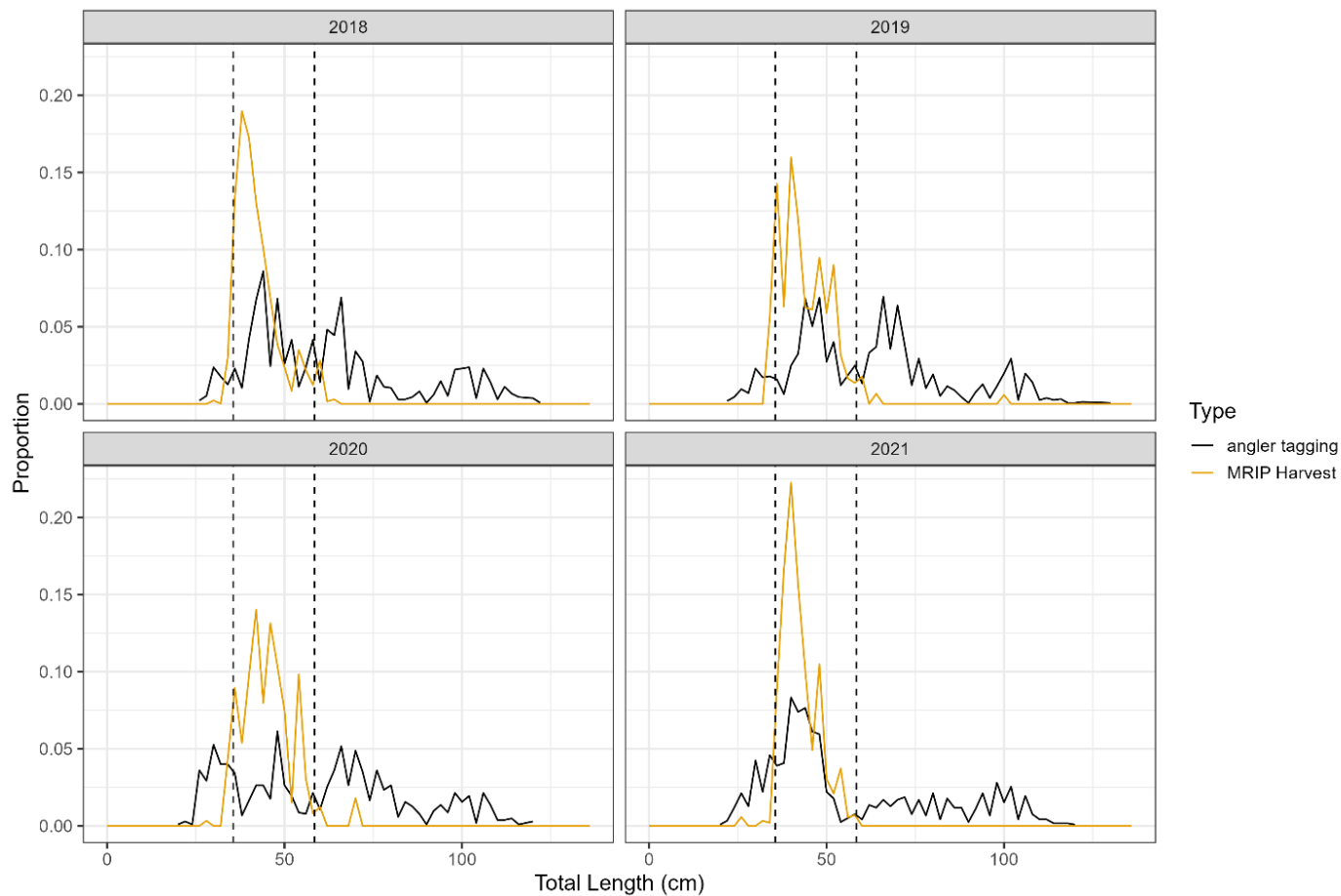
Tagging Programs

- VA Game Fish Tagging Program
- NC Tagging Study
- SC
 - Marine Game Fish Tagging Program
 - Inshore Tagging Program
 - Combined SCDNR Tagging Program Data
- GA Cooperative Angler Tagging Project (CATP)

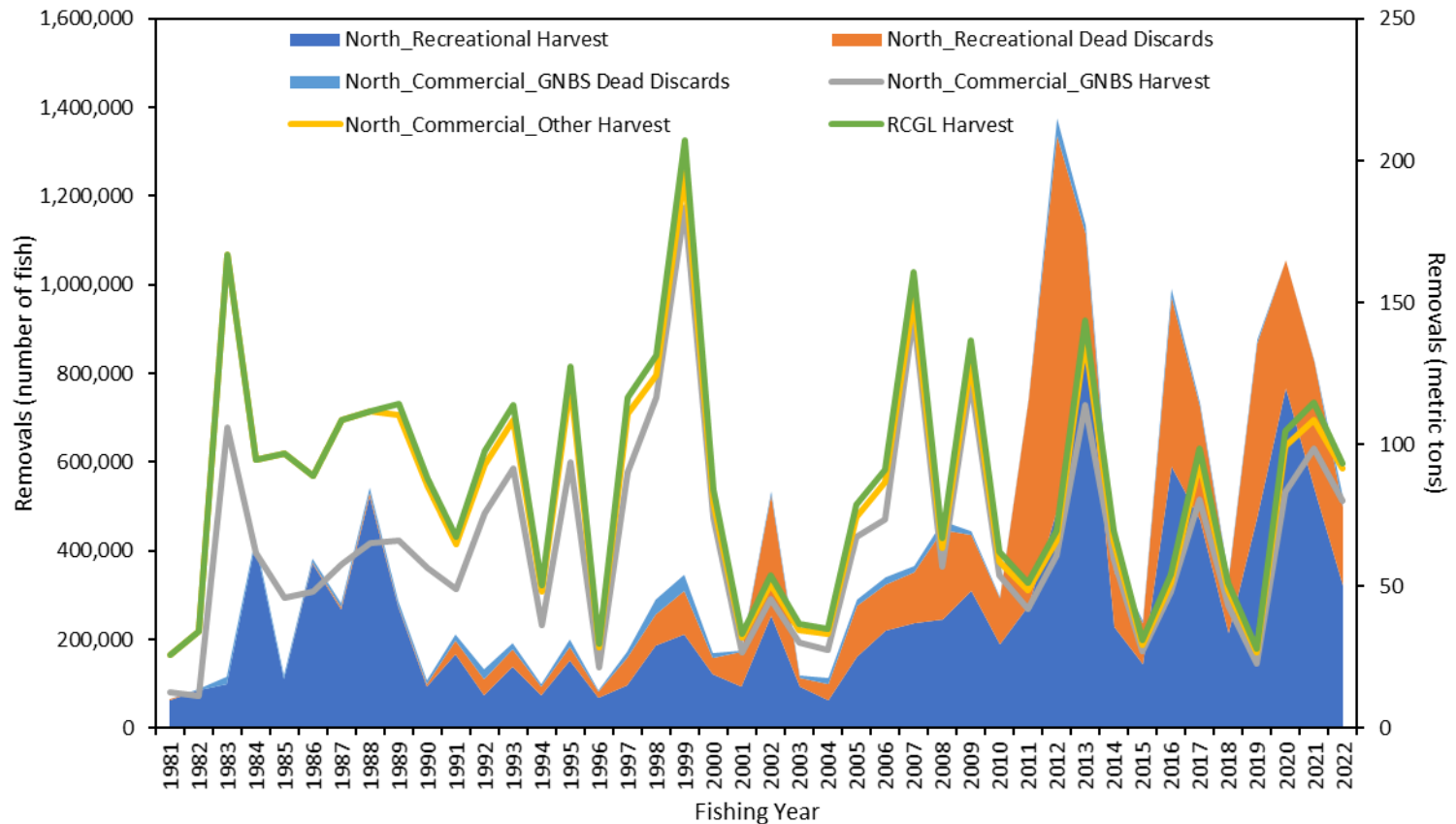
Northern Tagging Programs



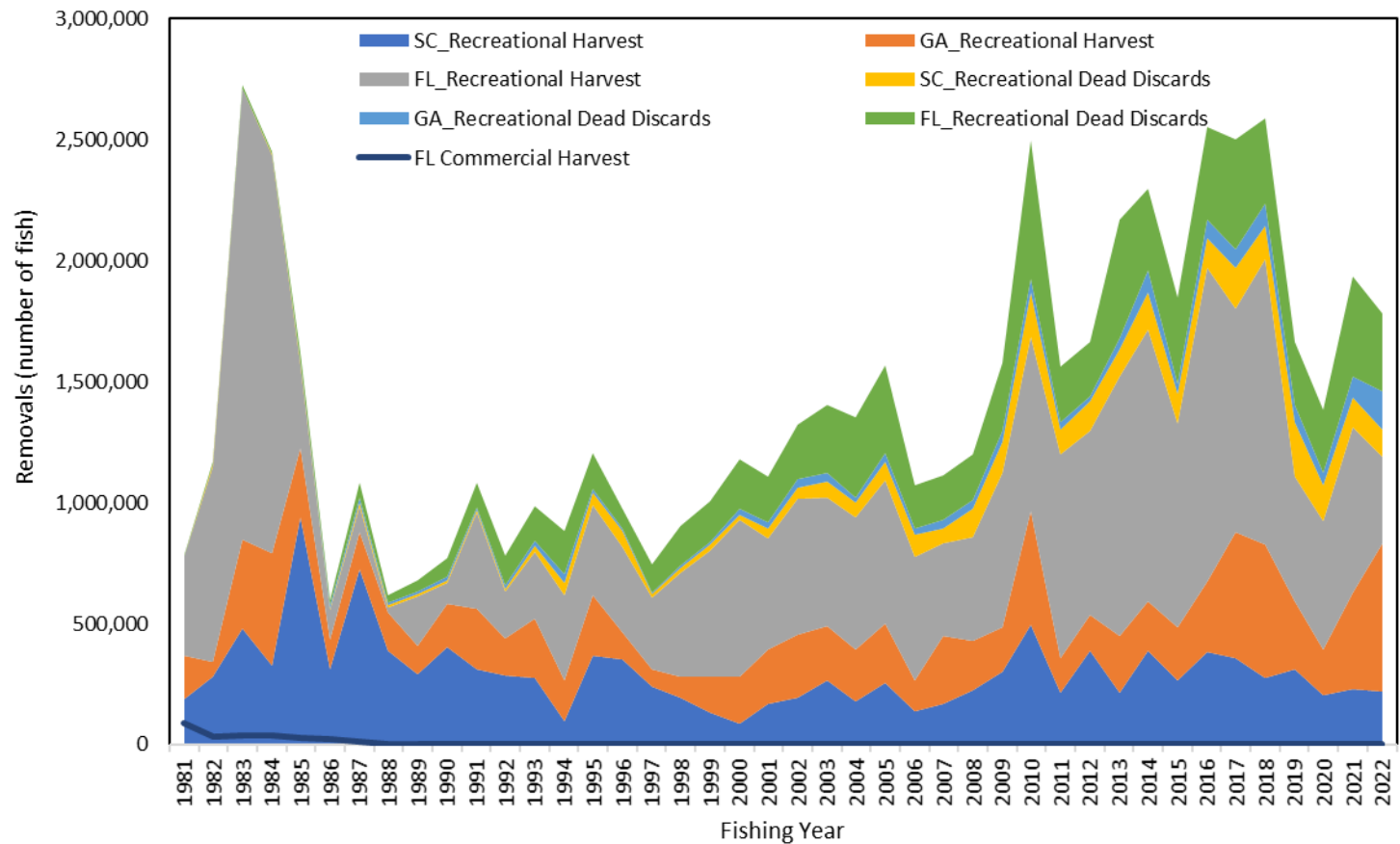
Southern Tagging Programs



Northern Total Fishery Removals



Southern Total Fishery Removals





Questions?